

Wiesn Dirndl

By: burdastyle

<http://www.burdastyle.com/projects/wiesn-dirndl>



It's Oktoberfest season! In honor of our company and founders' roots, we are offering this beautiful dirndl pattern. Based on the historical dress of Alpine peasants, the dirndl is the traditional dress of southern Germany and Austria. In Munich, wearing a dirndl is still a normal way to dress. We can't wait to see how you all interpret this pattern!

Materials

cotton, linen, buttons

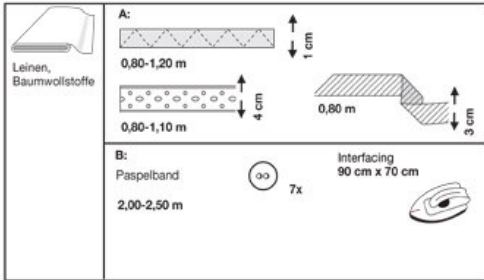
Step 1



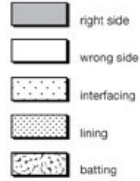
**burda Download-Pattern
dress 6038 – Instructions**

		114 cm / 45 ins												140 cm / 55 ins											
burda sizes		38	40	42	44	46	48	50	52	54	38	40	42	44	46	48	50	52	54						
A	m	0,90	0,90	0,90	0,90	1,25	1,35	1,35	1,35	0,85	0,85	0,85	0,85	0,85	0,85	0,85	0,90	0,90							
	yds	1	1	1	1	1 1/4	1 1/4	1 1/4	1 1/4	1	1	1	1	1	1	1	1	1							
B I	m	0,65	0,65	0,65	0,65	0,90	1,10	1,10	1,10	0,75	0,75	0,75	0,75	0,75	0,75	0,90	0,90								
	yds	1	1	1	1	1 1/4	1 1/4	1 1/4	1 1/4	1	1	1	1	1	1	1	1								
B II	m	3,00	3,00	3,00	3,00	3,00	3,00	3,00	3,00	3,00	3,00	3,00	3,00	3,00	3,00	3,00	3,00								
	yds	3 1/4	3 1/4	3 1/4	3 1/4	3 1/4	3 1/4	3 1/4	3 1/4	3 1/4	3 1/4	3 1/4	3 1/4	3 1/4	3 1/4	3 1/4	3 1/4								
B III	m									1,30	1,30	1,30	1,30	1,30	1,30	1,30	1,30								
	yds									1 1/4	1 1/4	1 1/4	1 1/4	1 1/4	1 1/4	1 1/4	1 1/4								

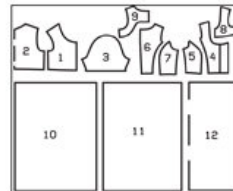
→ with nap * without nap



dress fitted,
blouse semi-fitted



Patternpieces:



Blouse A

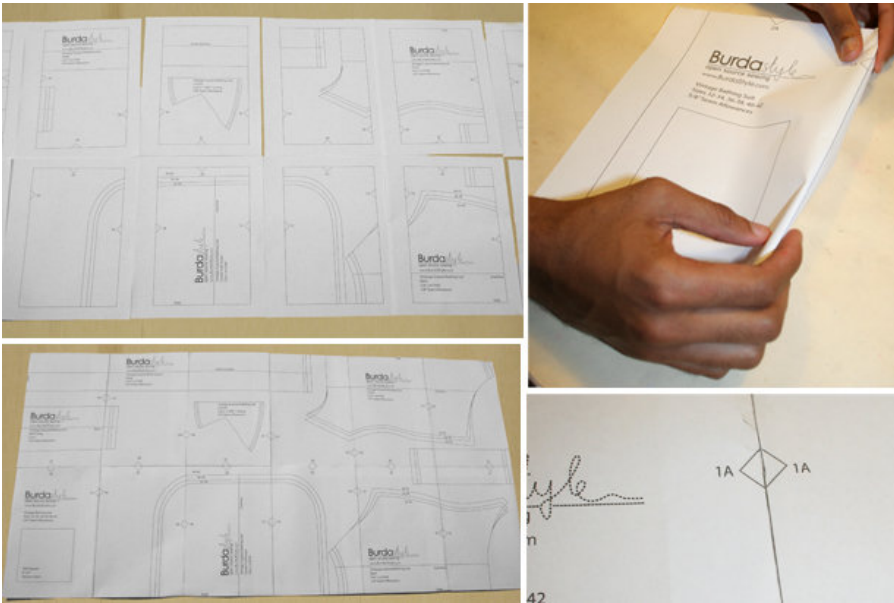
- 1 Front piece 1x
- 2 Back piece 1x
- 3 Sleeves 2x

DRESS B

- 4 Center front piece 2x
- 5 Side front piece 2x
- 6 Center back piece 2x
- 7 Side back piece 2x
- 8 Front facing 2x
- 9 back facing 2x
- 10 Right front skirt panel 1x
- 11 Left front skirt panel 1x
- 12 Back skirt panel 1x

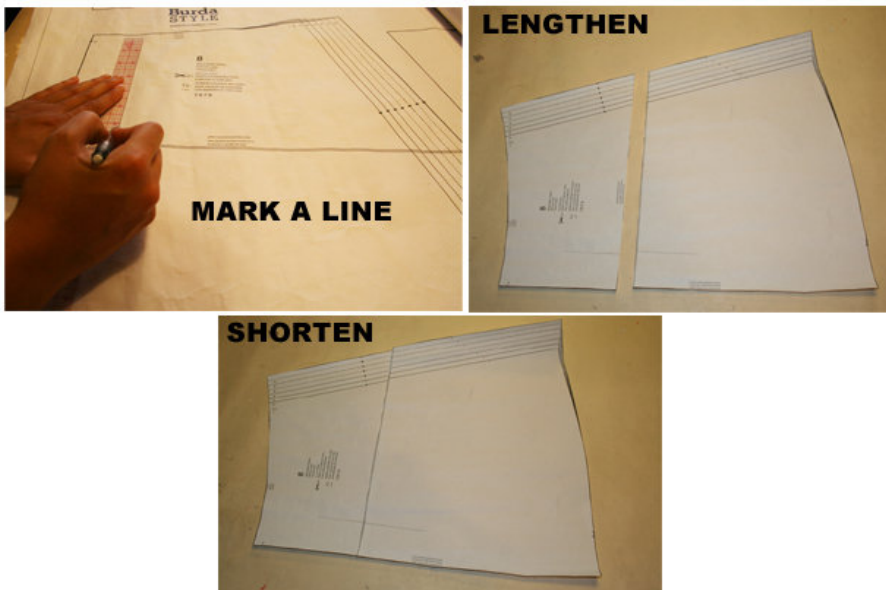
FABRIC: Linen, cotton fabric

Step 2



The patterns can be printed out at the copy shop. If you decide to print them at home, follow the instructions: Paper cut for ANSI A (German DIN A4) prints: The patterns are printed out on 56 sheets with a thin frame. Wait until all sheets are printed out. Arrange the sheets so that they fit together (see additional page with the overview of the prints). Fold the single sheets on the upper and right edge along the thin frame lines. Begin with the left lower sheet and then tape the frame lines together precisely.

Step 3



ADJUST PATTERN SIZES

Select your size according to the Burda-dimension table: dresses, blouses, jackets and coats according to the bust size, trousers and skirts according to the hip width. Change the pattern to fit your measurements if they deviate from the Burda-size chart. Cut out the pattern according to your size. Refer to our 'Adjust patterns for mixed sizes' technique

LENGTHENING OR SHORTENING THE PATTERN PIECES

Our pattern is calculated for a height of 5â€™ 6â€™ (168 cm). If you are taller or shorter, you can adjust the pattern

pieces along the lines marked “lengthen or shorten here”. This way the proper fit is maintained. Always adjust all pattern pieces along the same line to the same degree

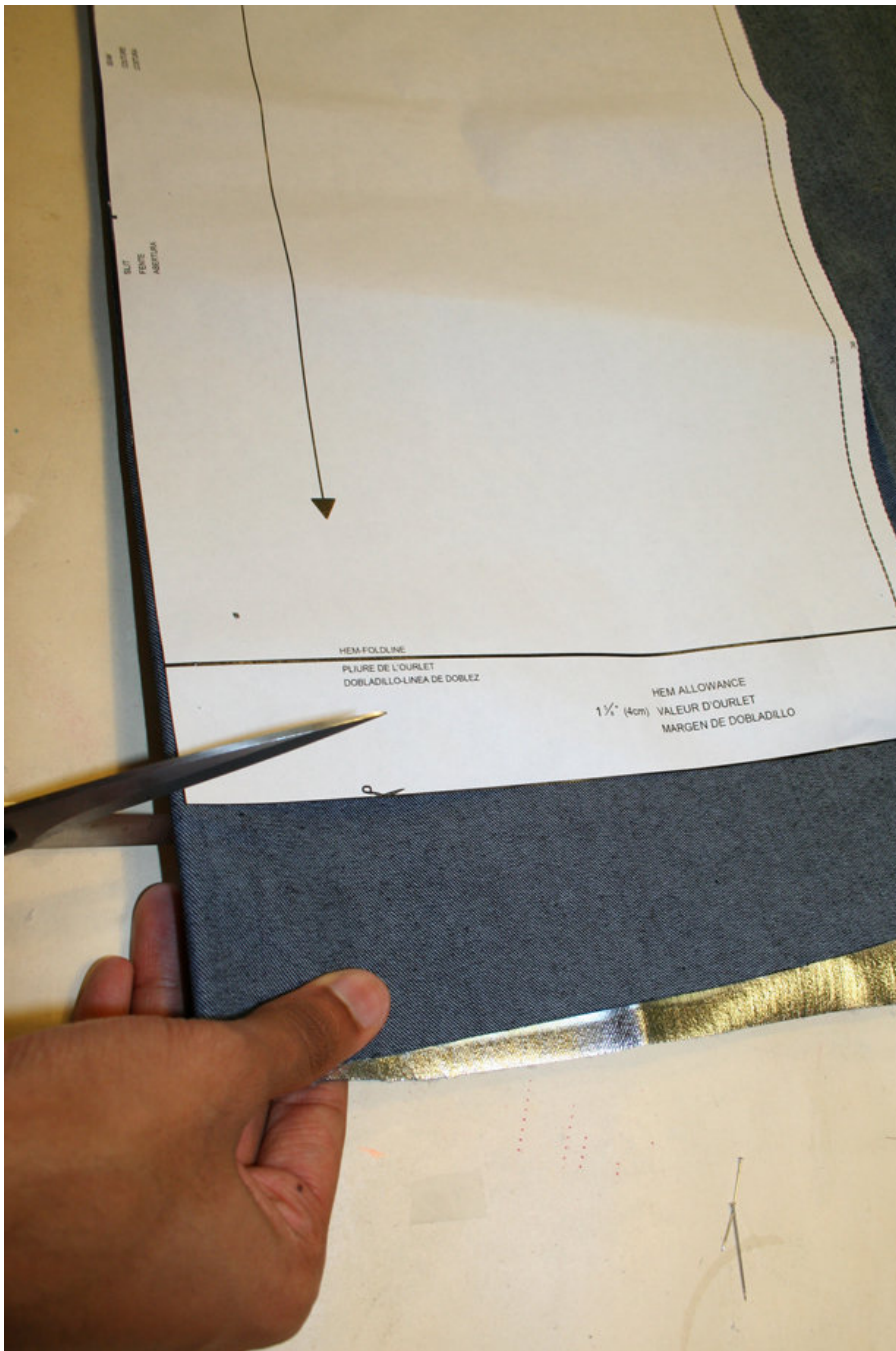
How to lengthen and shorten pattern pieces:

Cut the pattern pieces along the marked lines

To lengthen, slide the two halves of the pattern piece as far apart as necessary.

To shorten, overlap the two halves of the pattern piece as far as necessary. Blend the side edges.

Step 4



CUTTING OUT

FOLD () means: Cut on the fold, the fold being the center of the pattern piece, but never a cut edge or seam. The piece should be cut double, with the fold line forming the center line. Pattern pieces that are outlined with a broken line in the cutting diagrams are to be placed face down on the fabric. The cutting diagrams on the pattern sheet show how the pattern pieces should be placed on the fabric.

B: fabric I, fabric II

Cut pieces 4 to 9 from fabric I, pieces 10, 11 and 12 from fabric II. See cutting diagrams.

Cut the apron from fabric III (always 3 sizes combined):

[sizes 6/8/10 (EU 38/40/42) â’ sizes 12/14/16 (EU 44/46/48) â’ sizes 18/20/22 (EU 50/52/54)]

Apron piece a: 39â€² (97 cm) long and 38â€² â€² 40â€² â€² 44â€² (94 – 101 – 110 cm) wide

Apron waist band b: 4â€² (10 cm) wide and 16â€² â€² 18â€² â€² 22â€² (39 – 45 – 54 cm) long

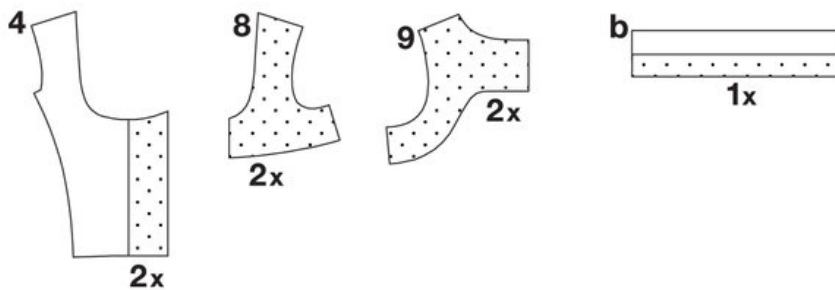
Apron tie strips c (cut twice): 4â€² (10 cm) wide and 50â€² â€² 51â€² â€² 53â€² (125 – 128 – 133 cm) long.
See cutting diagrams.

The cutting diagrams show the placement of the pattern on the fabric.

For a single layer of fabric, the pattern pieces are pinned to the right side. For double layers of fabric, the right sides are facing and the pattern pieces are pinned to the wrong side. The pattern pieces that are shown extending over the fold of the fabric in the cutting diagram should be cut last from a single layer of fabric.

Step 5

INTERFACING



SEAM AND HEMLINE ALLOWANCES are included on an average:

1 1/2â€² (4 cm) for the hemline, 5/8â€² (1.5 cm) for all edges and stitches. Using BURDA copying paper, transfer the

lines and signs of the pattern onto the left fabric side. Instructions can be found in the packaging.

SEWING

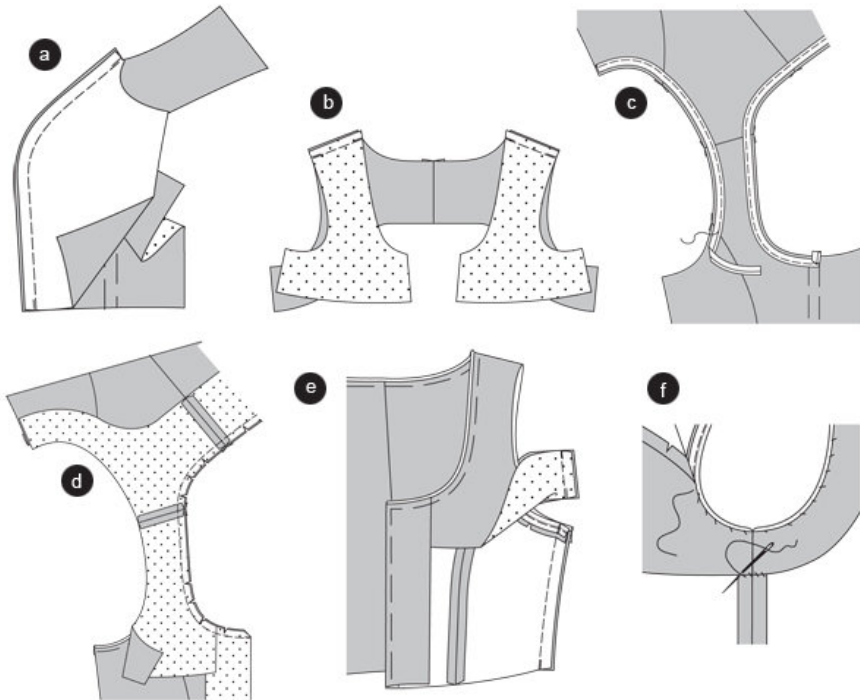
While sewing, the right sides of the fabric are facing. Transfer all lines of the pattern onto the right side of the fabric using basting stitches.

B

INTERFACING

Cut the interfacing according to the diagram and press onto the wrong fabric side.

Step 6



B DRESS

TOP / PRINCESS SEAMS

Position the side front pieces on the center front pieces, right sides facing. Pin the princess seams (seam 5) and stitch. Stitch the back princess seams the same way (seam 6). Neaten allowances and press apart (a).

Center back seam: Position the back pieces together, right sides facing. Pin the center seam and stitch. Secure seam ends. Neaten allowances and press apart. Position the back facings together, right sides facing. Stitch the center back seam. Press the allowances apart.

Shoulder seams: Position the front pieces on the back pieces, right sides facing; stitch the shoulder seams (seam 7). Neaten allowances and press apart.

Position the front facings on the back facings, right sides facing. Stitch the shoulder seams (seam 9). Press the allowances apart. Neaten the bottom edge of the facing (b).

PIPING STRIP

Position the piping strip onto the neckline and the armholes so that it is positioned on the allowances. Turn the strip ends along the fold line (front pieces) according to the drawing, and pin. Stitch the piping strip narrowly using a one-sided edge stitching foot. Trim the allowances along the armholes, snip in; fold inside and pin. The piping lays on the right side. Press (3).

FRONT EDGES / FACING

Neaten the allowances of the front pieces, fold to the outside and pin along the neckline. Pin the neckline

facing

onto the neckline, right sides facing. The shoulder seams meet. Stitch the facing, enclosing the piping. Trim allowances, snip in at the curves. Cut the corners at the angles. Turn the facings towards the inside. Pin the neckline and the front edges, then press (d).

SIDE SEAMS

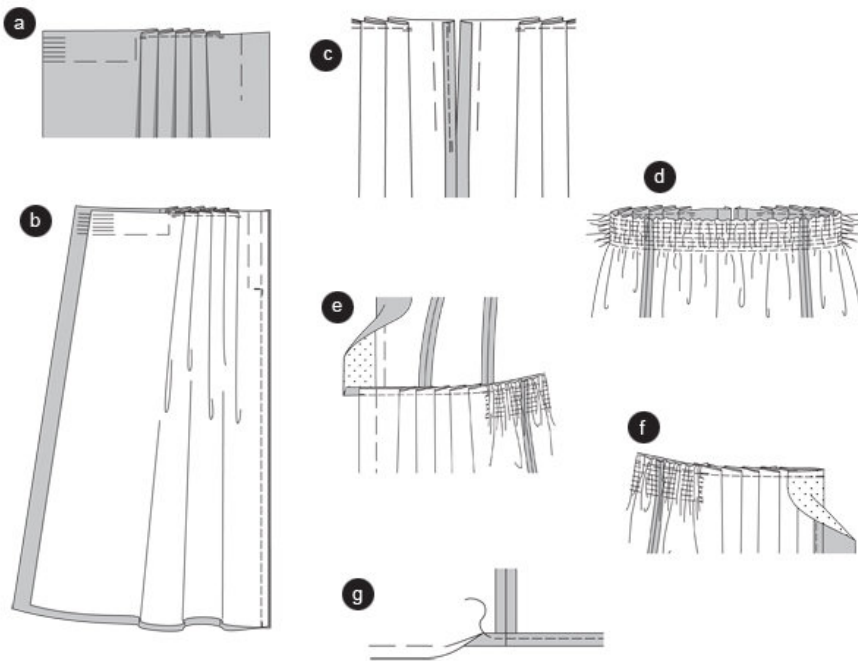
Flip the facing to stitch the side seams. Position the front piece on the back piece, right sides facing. Stitch the side

seams (seam 8) along the facings (seam 10) as well. Press the allowances apart. Fold the facings towards the inside.

Along the armholes, stitch the facings, folded in, onto the piping strips. Stitch the bottom facing edge onto the

allowances of the side seams and the center back seam (e).

Step 7



SKIRT / PLEATS

From the right side of the fabric, position the pleats of the front skirt panels according to the arrow. Topstitch along the allowance of the top skirt edge (a).

CENTER FRONT SEAM / SLIT

Position the front skirt panels together, right sides facing.

Baste the center seam (seam 12) and stitch from the slit sign downwards to the bottom edge of the skirt.

Secure

seam ends. Keep the slit basted. Neaten allowances and press apart (b). Open the basting stitches along the slit. At the

left front skirt panel, stitch the allowance along the slit ©.

SIDE SEAMS

Position the front skirt panel on the back skirt panel, right sides facing. Pin the side seams (seam 11) and stitch.

Neaten allowances and press apart.

TOP SKIRT EDGE / WIDTH

The gathered width of the skirt along the top skirt edge has to be distributed equally. As shown in the drawing,

stitch 6 times, at intervals of $\hat{A}1/2\hat{a}$ ' (1 cm), along the edge using basting stitches. Then stitch a seventh times along

the allowance. Tighten the bobbin threads to the width of the back top piece. Knot the thread ends and sew them

into the fabric. Finally distribute the width equally (d).

STITCH THE TOP PIECE

Position the facings onto the front pieces. 9 Position the top piece on the top skirt edge, right sides facing. The side seams meet the side edges of the front skirt panels. At the right front piece, the fold line of the facing meets the fold line of the right front skirt panel (seam 13) (e).

At the left front piece, the facing along the slit edge overlaps. Fold this facing around the slit edge to the inside and pin. Pin the waist seam line and stitch (f). Neaten allowances. Flip the top piece and press the allowances

inside the top piece. Fold and pin the facings along the fold line towards the inside. Fold and pin along the FOLD LINE of the right skirt panel. Press.

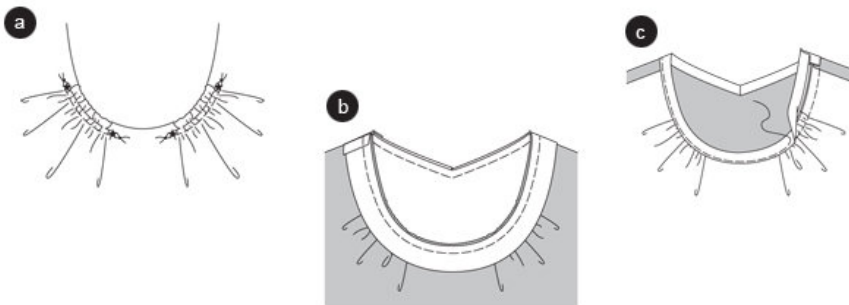
Work BUTTON HOLES into the right front piece. Apply BUTTONS on the center front of the left top side.

HEMLINE

Neaten the hemline, fold it inside and press. Topstitch the bottom edge of the skirt $\hat{A}1/2\hat{a}$ ' (1 cm) wide, at the same

time stitching the hemline (g).

Step 8



A

BLOUSE

SHOULDER SEAMS

Position the front piece on the back piece, right sides facing. Stitch the shoulder seams (seam 1) and ease the

shoulder edges on the back by slightly pulling or pushing one edge onto the other along the seam. Neaten allowances and press apart.

NECKLINE

Cut the seam allowance along the neckline

The eased width of the neckline has to be distributed equally. To achieve that, double stitch using basting stitches between the * markings. Tighten bobbin threads: for sizes 6-10 (EU 38-42) to 2 ½" (6,5 cm), for sizes 12-16 (EU 44-48) to 2 ¾" (7 cm), for sizes 18-22 (EU 50-54) to 3" (7,5 cm). Knot thread ends. Distribute the width equally (a).

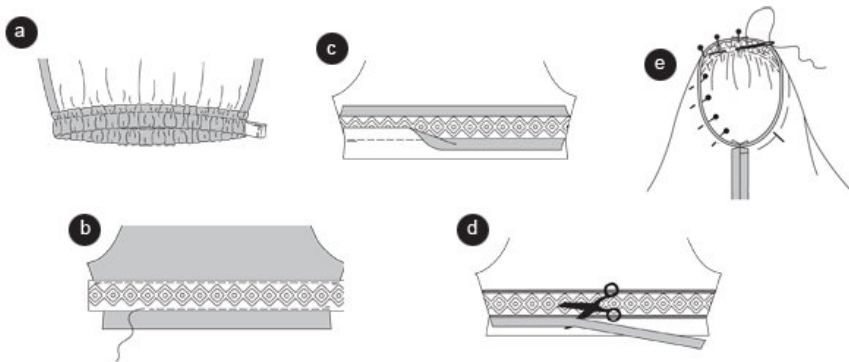
Pin the bias strips onto the neckline, right sides facing. At the shoulder seams, turn the ends of the straps.

Stitch

the strips ¼" (0.7 cm) wide (b). Then turn the strips over the edge of the neckline towards the inside. Pin along the

seam line. Allow the strips to overlap approximately 1 mm. Fold a pleat at the center back. Stitch onto the right fabric side of the blouse along the seam line, enclosing the inner half of the strip ©.

Step 9



SIDE SEAMS

Position the front piece on the back piece, right sides facing. Stitch side seams (seam 2), from the top of the side

to the allowance at the bottom. Secure seam ends. Neaten allowances and press apart.

BOTTOM BLOUSE EDGES / ELASTIC BAND

Neaten the allowance of the bottom edge of the blouse, fold and press. Stitch a tube for the elastic band at the bottom edge of the blouse, ½" (1.2 cm) wide. Pull the elastic band, using a safety pin, through the opening of the side seam and then through the whole tube. Try the blouse on to adjust the length of the elastic band. Sew the ends of the band together (a).

LACE TRIM

Pin the lace edging onto the sleeve, as marked, and topstitch narrowly. From the wrong fabric side of the sleeve, cut carefully along the center line of the trim (b). Then press the allowances over the stitch lines towards the top

and towards the bottom respectively ©. Topstitch the edges of the lace trim, using a narrowly adjusted zigzag

stitch, thereby catching the allowances. Other overlapping allowances along the zigzag stitches have to be cut (d).

Fold the sleeves lengthwise, right sides facing.

Stitch the sleeve seams (seam 3). Neaten allowances and press apart. Stitch the sleeve hem.

APPLY SLEEVES

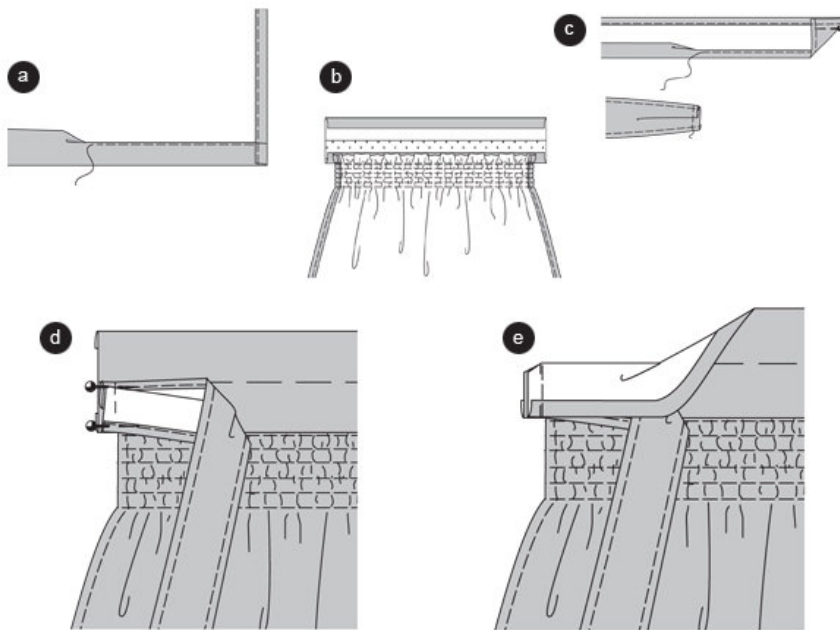
The eased width of the sleeve curve has to be distributed equally. To do so, stitch the sleeve curve according to the text and drawing 11. Then tighten the bobbin threads of the stitch lines slightly.

Position the sleeves onto the armhole, right sides facing, and pin. When applying the sleeves four points are important for the right fit: The cross lines of sleeves and front piece have to meet. The sleeve and side seams have

to meet. The cross line of the sleeve curve has to meet the shoulder seam. The eased width has to be distributed

equally. When positioning the sleeve on the armhole, pin and stitch on the side of the sleeve. Trim allowances, neaten and press the front and back piece inwards (e).

Step 10



B

APRON

Fold $1\frac{1}{2}$ ' (4 cm) of the bottom edge inside and press. Fold the edge again $\frac{1}{2}$ ' (1 cm) and pin. Stitch the hemline

narrowly. Fold the side edges inwards, $\frac{3}{4}$ ' (1.5 cm) wide; and press. Fold again, pin and topstitch narrowly. To

gather the apron edge see step 8. The gathered width of the top apron edge has to be distributed equally. To do so

tighten the bobbin threads of the stitch lines to the width of the waistband. Knot thread ends. Distribute width equally (a).

Pin the waistband onto the top apron edge, right sides facing. Let the allowance overlap at the sides. Stitch. Press the allowances into the waistband. Fold and press the allowances of the top of the waistband towards the inside (b).

Along the tie strips, fold the long and short edges $\frac{1}{2}$ " (1.5 cm) wide inside and press; fold again and pin. Fold

the end of the strip to an angle, then pin. Topstitch the allowance. Create a pleat at each of the open edges of the strip ends and pin. Complete width of the strip is $1\frac{1}{2}$ " (3.5 cm) ©.

Pin the strips at the side edges of the waistband. Fold the waistband in half towards the outside. Stitch the narrow

edges together, enclosing the strips. Trim allowances (d). Cut the corners at angles (e). Turn the waistband. Pin the inner edge onto the seam line. Topstitch the waistband edges narrowly, at the same time stitching the inner half.

BurdaStyle

Wiesn Dirndl