

10/2011 Blouse with front pleats

By: burda style magazine

<http://www.burdastyle.com/projects/102011-blouse-with-front-pleat>



Blouse with front pleats burda style magazine patterns FAQ

Materials

Chiffon

Step 1 — Preparation



Paper cut for ANSI A (German DIN A4) prints:

This pattern is printed on 8.5 × 11 sheets of plain paper. Do not scale or center pages before printing. Wait until all sheets are printed out before beginning to tape them together. **Do not cut out pattern pieces yet—** Arrange the sheets on a large, hard, flat surface so that they fit together, matching up like numbers and letters (i.e. 6A to 6A). To tape pattern together, fold under the margin of one piece (6A) and tape right against the line of it's matching number/letter (6A).

Trace the pattern pieces from the pattern sheet following the lines and markings for model 114 and the right size. This pattern runs in the sizes 36, 38, 40, 42, 44.

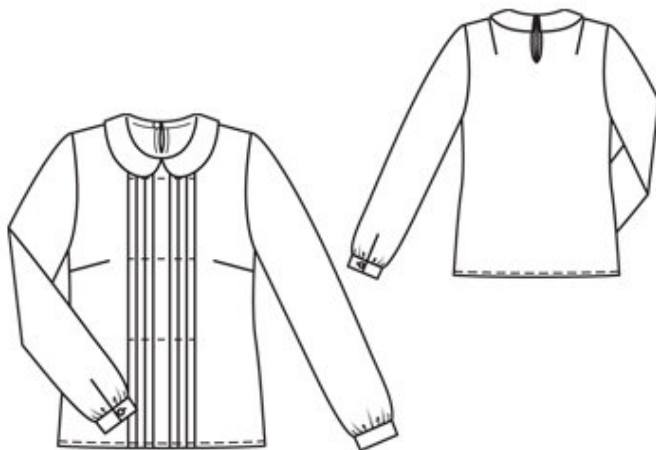
Please note that pattern piece 2, on the pattern sheet is not needed for this model. It is the center front piece for model 116

Also pieces 7 and 8 should be ignored as they are the facing pieces for model 115

burda style magazine pattern do not have seam allowance included.

Seam and hem allowances to be added: Seams and edges 1.5 cm (5/8 in).

Step 2 — Cutting out



Main fabric:

Pattern piece 1 – Center front piece, cut on fold x1

Pattern piece 3 – Side front piece, cut x4 (incl. x2 for inside, lining, piece)

Pattern piece 4 – Back piece, cut on fold x2 (incl. x1 for inside, lining, piece)

Pattern piece 5 – Sleeve piece, cut x2

Pattern piece 6 – Collar, cut x4

Also draft and cut the following pieces, not on the pattern sheet:

a) Bias binding strip for back vent in the dimensions, 30×3 cm ($12 \times 1 \frac{1}{4}$ in). Incl. allowances

b) Two bias binding strips for sleeve vents in the dimensions, 19×3 cm ($7 \frac{1}{2} \times 1 \frac{1}{4}$ in). Incl. allowances.

c) 2 sleeve cuff bands, cut in the following dimensions:

size 36: $22,5$ cm x 5 cm (9 in x 2 in)

size 38: 23 cm x 5 cm ($9 \frac{1}{8}$ in x 2 in)

size 40: $23,5$ cm x 5 cm ($9 \frac{1}{4}$ in x 2 in)

size 42: 24 cm x 5 cm ($9 \frac{1}{2}$ in x 2 in)

size 44: $24,5$ cm x 5 cm ($9 \frac{3}{4}$ in x 2 in)

Finished width $2,5$ cm (1 in)

d) Bias binding strip for neck edge in the following dimensions, 47×4 cm ($18 \frac{1}{2}$ in x $1 \frac{5}{8}$ in). Incl. allowances.

Interfacing:

Cut interfacing for and iron onto wrong sides of collar pieces.

Step 3 — Pleats

On the center front piece (number 1), fold so that lines of each pleat meet (arrow point/arrow end), right side facing in. Tack the pleat lines together. Work from the wrong side of the fabric to lay the pleats each toward the center front and press. Tack the pleats to the upper and lower edges. Press the side edges to the inside on the fold lines.

Step 4 — Darts

For darts, fold the side fronts and the back (inner and outer pieces) each along the center of dart, right side facing in. Pin dart lines together. Stitch darts, beginning at the side and upper edges.

Press the bust darts down and the shoulder darts toward the center back.

Step 5 — Side seams and shoulder seams

Lay outer side front pieces (piece 3) right sides together with the outer back piece (piece 4). Line up and pin side seams and shoulder seams. Stitch seams. Trim allowances to 7 mm (1/4 in) and neaten edges together with zigzag or overlock stitching.

Repeat the same thing with the inner pieces (lining). Press allowances onto back

Step 6 — Hem

On outer and inner layers, press the hem allowance to inside, turn raw edge under to 7 mm (1/4 in) wide and edgestitch the hem in place.

Step 7 — Lining

Lay outer pieces on inner pieces with wrong side of outer pieces facing the wrong side of inner pieces (if a transparent material such as chiffon is being used, instead lay with the wrong side of outer pieces facing the right side of inner pieces). Line up, pin and tack together along front edges, neck and armhole edges, and around the marked slash line for the slit, on the back pieces (3).

Step 8 — Back slit

Slash along the slit line. Spread the cut edges apart to a straight line. Line up, pin and stitch the binding strip, right sides facing, catching as little fabric as possible at the end of slit (arrow). This seam should be sewn with 0,5 cm (slightly less than 1/4 in) seam allowance. Press the seam allowance onto binding. Fold and press the opposite long edge of binding to inside so that distance between the folded edge and the joining seam is an even 1 cm (3/8 in) wide. Fold in the 0,5 cm (slightly less than 1/4 in) seam allowance on the inside part of the binding strip, press and pin in place over the joining seam. Work from the right side of back to topstitch the binding close to the joining seam, catching the inside half. Stitch across binding at the end of the slit.

Step 9 — Attach centre front

Pin the center fronts to front edges of side fronts, at abutting lines – hem allowance of center fronts extends at lower edge. Work from the inside to pin inside pleat seams. Stitch. Trim seam allowances to a width of 7mm (1/4 in) and neaten edges together. On center front, fress the allowance to inside, turn the raw edge under to a hem width of 7 mm (1/4 in), and edgestitch in place.

Topstitch horizontally across center front. Work top line of stitching 5 cm (2 in) below neck edge (measured at center front), then topstitch twice more, spaced 15 cm (6 in) apart.

Step 10 — Collar

For each collar half, lay two collar pieces together, pin and sew together along outer edges. Trim seam allowances to about half the width and trim the corners diagonally. Clip curves. Turn collar halves right sides out and press. Tack joining edges together.

Step 11 — Attaching the collar

Tack each collar half to neck edge, right sides facing, starting from center back and then meeting at center front. Back ends lie on binding of slit edges.

Fold the bias strip in half lengthwise, wrong side facing in and press. Pin the bias strip to neck edge, over the collar halves, so that fold edge of strip lies on the collar halves, 1 cm (3/8 in) from marked seam line, and open edges lie on the seam allowances. Work from the inner side of the blouse to stitch along the marked neck edge. Trim the seam allowances and clip the seam allowance at curves almost into the seam.

Turn the bias strip up, lay on seam allowances and press. Fold bias strip over the seam allowances to the inside and stitch in place on inside using invisible stitches.

Topstitch at the neck edge, about 5 mm (3/16 in) from the collar joining seam without catching the collar.

On the right edge of slit, make a thread loop below the collar joining seam. To do this, stretch a few threads and then cover them with closely spaced buttonhole stitch. Sew the button to the opposite slit edge to match the loop.

Stitch the back corners of collar in place with a few stitches by hand.

Undo the tacking at pleats.

Step 12 — Sleeve cuff bands

Bind the sleeve vents the same way as instructed for the back slit binding. At front edge of vent (i.e the edge further from the sleeve seam), fold binding to inside and pin in place. At the back edge of vent, the binding extends, as an underlap.

To ease each sleeve cap, stitch two lines of machine tacking (longest stitch setting) to each side of the marked seam line. From $\hat{a}-\phi$ to $\hat{a}-\phi$. Do not yet pull bobbin thread.

Fold each sleeve lengthwise, right sides facing in. Line up, pin and sew the sleeve seams. Trim allowances to 7 mm (1/4 in) and neaten together with zigzag or overlock. Press onto back.

Gather the lower sleeve edges to match edges of cuff bands. To gather, use the longest stitch on the machine and sew along the sleeve opening edge then pull on the bobbin threads and slide the sleeve opening together along the threads and gather evenly until it fits the cuff bands. Tie a knot to stay in place

Pin the cuff bands, right sides together with the sleeve openings – the seam allowance extends past the edges of the sleeve vent. Sew together. Press the seam allowance onto the cuffs. Fold and press down the allowance on the opposite long edge of the cuffs to the inside. Fold the cuffs in half, right sides facing in and pin the short sides of the cuffs together and stitch. Trim the seam allowances, trim diagonally at corners. Turn the cuffs right side out and press. Pin the inside halves of the cuffs over the joining seam. From the outside, topstitch on the cuff close to the joining seam, catching the inside half.

Work one buttonhole in the front edge of each cuff. Sew a button to the back end of each cuff to match the buttonhole.

Step 13 — Sleeve caps

Turn the garment inside out and set in sleeves in each armhole, right sides facing each other. Ease the sleeve cap by pulling the bobbin thread on the long stitch until it fits the sleeve opening. Make sure to match up the markings. Pin down and stitch around the armhole opening. Trim allowances to 7 mm (1/4 in) and neaten together. Turn garment back to the right side and press the armhole seam, pressing the allowance out into the sleeve.

BurdaStyle

10/2011 Blouse with front pleats