

Chanel Style Jacket 03/2012

By: burda style magazine

<http://www.burdastyle.com/projects/chanel-style-jacket-032012>



Chanel style jacket sewing pattern. Make your own version of the this classic look originally introduced by Coco Chanel. NOTE: The pattern PDF is the same for this jacket as for The Two Tone Coat burda style magazine patterns FAQ

Materials

Silk boucl, width: 140 cm (55 ins) length: Sz 36-38: 1.30 m (1 1/2 yds) Sz 40-44: 1.60 m (1 3/4 yds) Lining, width: 140 cm (55 ins) length: 1.10 m (1 1/4 yds) for all sizes. Vilene/Pellon G 785.

Step 1 — Preparations



Paper cut for ANSI A (German DIN A4) prints:

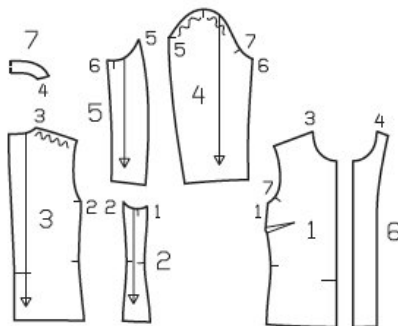
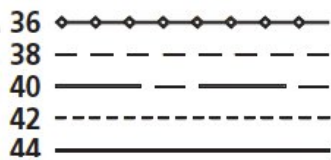
This pattern is printed on 8.5 × 11 sheets of plain paper. Do not scale or center pages before printing. Wait until all sheets are printed out before beginning to tape them together. **Do not cut out pattern pieces yet**— Arrange the sheets on a large, hard, flat surface so that they fit together, matching up like numbers and letters (i.e. 6A to 6A). To tape pattern together, fold under the margin of one piece (6A) and tape right against the line of it's matching number/letter (6A).

Trace the pattern pieces from the pattern sheet following the lines and markings for the correct size and the correct style (109). (This pattern also includes pattern pieces, lines and markings for style 110 and 11 that should be ignored for this project.)

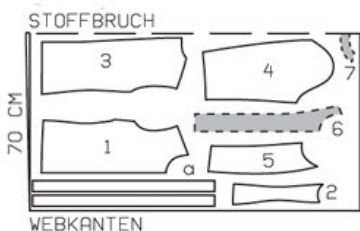
burda style magazine pattern do not have seam allowance included.

Seam and hem allowances to be added: Seams and edges 1.5 cm (5/8 in), hem 4 cm (15/8 ins), lining 1.5 cm (5/8 in).

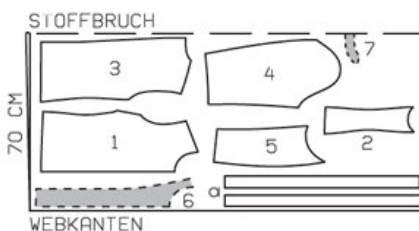
Step 2 — Cutting out



Fabric, 140 cm width
Sz. 36, 38



Sz 40 - 44



Webkante = Selvage
Stoffbruch = Fabric fold

Boucl :

- 1 front 2x
- 2 side piece 2x
- 3 back 2x
- 4 upper sleeve 2x
- 5 under sleeve 2x
- 6 front facing 2x
- 7 back facing, on a fold 1x

Also draft and cut the following pieces, not included on the pattern sheet:

- a) 4 fringe strips, 72 73 74 76 77 cm (28 1/2 28 3/4 29 1/4 30 30 1/2 ins) long, 4 cm (1 5/8 ins) wide, cut with out allowances.

Lining:

- piece 1 minus facing width;
- piece 3 minus neck facing and with an ease pleat of approx. 2 cm (3/4 in) at centre back;
- pieces 2, 4, and 5.

Interfacing: Interface hem allowances.

Step 3 — Sewing



Stitch the bust darts. Press the darts down. Stitch the centre back seam. Stitch side pieces to front and back pieces. Stitch shoulder seams on jacket and on facing. Press seam allowances open.

Pin the facing right sides together with the jacket. Stitch along front and neck edges. Trim seam allowances, trimming corners diagonally. On curves, clip allowances several times. Turn the facing to the inside and press edges. Unfold facing at hem. Press the hem allowance to inside but do not yet sew in place. Turn the facing to the inside again.

Stitch the front and back sleeve seams. Press sleeve hem allowances to inside and sew in place by hand.

Set in sleeves, easing sleeve caps: Turn the garment inside out and set in sleeves in each armhole, right sides facing each other, easing the sleeve caps. Pin the sleeve to the armhole and stitch around the armhole opening. Press the seam allowance out in to the sleeve.

Sew lining. On lining back, stitch allowances of centre seam together, 1 cm (3/8 in) from edge. To form ease pleat, stitch along centre back at top and bottom, each approx. 5 cm (2 ins) long, and baste in between. Press pleat to one side. Stitch darts and seams of lining. Set in sleeve linings same way as sleeves on jacket.

Sew lining in place, hem jacket: Stitch lining to inside facing edges, turning hem allowance of facings down. Lay lining inside jacket with wrong sides together, pulling linings into sleeves. Turn hem allowance to inside and sew in place by hand. Turn in lining along hem edge. Press fold edge lightly, push upward in a slight curve, and pin to hem allowance. Sew facings and lining in place. Lay extra length of lining down and press lightly. Pin a fold, approx. 1 cm (3/8 in) deep, in lining, above sleeve hems. Turn in sleeve linings and sew to hem allowance. Lay extra length down and press.

Zigzag stitch 1 cm (3/8 in) from long edges of two fringe strips and 1.5 cm (5/8 in) from long edges of both other strips. Fringe the strip edges by removing fabric threads up to stitching. Stitch matching fringe strips together on one end. To do this, overlap ends slightly and zigzag stitch together. Lay strip with 1.5 cm (5/8 in) wide fringe on remaining strip, with wrong side facing right side, and stitch together along the centre. Pin doubled fringe strip to jacket along front and neck edges so that one fringed edge extends, 1 cm (3/8 in) wide. Begin at centre back and lay strip in a fold at each front corner of neck edge. Sew fringe strips in place by hand.

BurdaStyle

Chanel Style Jacket 03/2012