

02/2012 Boat neck satin dress

By: burda style magazine

<http://www.burdastyle.com/projects/022012-boat-neck-satin-dress>



Boat neck satin dress. Same pattern as 107A! burda style magazine patterns FAQ

Materials

Crpe satin with widthwise stretch, Use only fabrics with two good sides, one shiny side and one matte side.
Fabric width: 135 cm (53 in) Fabric length: Size 36, 38 & 40: 1.70 m (1 7/8 yds.) Size 42 & 44: 1.75 m (2 yds.) Vilene bias tape/stay tape

Step 1 — Preparation



Paper cut for ANSI A (German DIN A4) prints:

This pattern is printed on 8.5 × 11 sheets of plain paper. Do not scale or center pages before printing. Wait until all sheets are printed out before beginning to tape them together. **Do not cut out pattern pieces yet**— Arrange the sheets on a large, hard, flat surface so that they fit together, matching up like numbers and letters (i.e. 6A to 6A). To tape pattern together, fold under the margin of one piece (6A) and tape right against the line of it's matching number/letter (6A).

Trace the pattern pieces from the pattern sheet following the lines and markings for the correct size and the correct style (107B). (This pattern also includes pattern pieces, lines and markings for style 108 and 107A that should be ignored.)

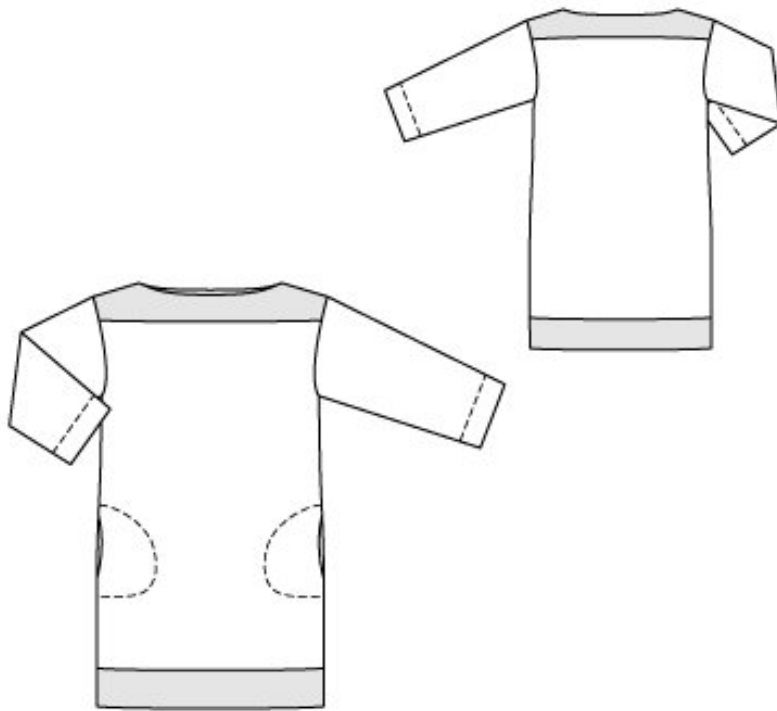
Lengthen piece 22 as indicated. Trace the pocket piece from piece 21 as a separate pattern piece, it is the same for all sizes.

Trace the neck yokes from pieces 21 and 22 as separate pattern pieces.

burda style magazine pattern do not have seam allowance included.

Seam and hem allowances to be added: Seams and edges 1.5 cm (5/8 in), sleeve hems 5 cm (2 ins) (flare sleeve hem allowances), hem 1.5 cm (5/8 in).

Step 2 — Cutting out



Main fabric:

Pattern piece 21 – front, cut on a fold 1x

front neck yoke, cut on a fold 1x

Pattern piece 22 – back, cut on a fold 1x

back neck yoke, cut on a fold 1x

Pattern piece 23 – sleeve, cut 2x

Pattern piece 21 – pocket piece, cut 4x

Vilene Bias Tape/ stay tape: Iron to neck edges of bands (on matte side).

Step 3 — Sewing

Sewing:

Shoulder seams

Stitch the shoulder seams of top and of neck yoke. Begin and end each seam exactly at the marked neck edge. Trim seam allowances to 7 mm (1/4 in) wide and press open.

Neck yoke

Press the allowances on the lower edges of neck band to wrong side. Work from the inside to pin the yoke to neck edge, with right side facing wrong side. Stitch along marked neck edge. Trim seam allowances. Turn

the yoke up and press the seam allowances away from band. Topstitch the front and back to the seam allowances, close to the seam. Turn the band to outside and press neck edge. Edgestitch lower edges of band in place. Baste bands to armhole edges.

Sleeves

Stitch the sleeves to the armhole edges, beginning and ending exactly on the marked sleeve seam lines. At the ends of the seams, turn the seam allowances of sleeve back and pin. Stitch the side seams from the sleeve joining seams to 5 cm (2 ins) above the fold line, with right sides facing, not stitching across the pocket openings. Clip the seam allowances at bottom ends of seams. Stitch the remaining open side seams with wrong sides facing. Remove the pins. Stitch the sleeve seams with right sides facing.

Inseam pockets

Pin the pocket pieces right sides together with the seam allowances of the pocket opening edges. Stitch the pocket pieces in place, close to the side seam and, on the pocket opening edge, along the seam line. Press the pocket pieces forward and pin. To stitch the pocket pieces in place, pin the paper pattern piece to each front and stitch along edge of pattern piece.

Hem

Turn lower edge of dress to outside on fold line, as hem band, and press hem edge. On upper band edge, turn edge of allowance under. Edgestitch band in place. Press sleeve hem allowances to inside, turn raw edges under, and stitch 4 cm (15/8 ins) from lower sleeve edge.

BurdaStyle

02/2012 Boat neck satin dress