

# 11/2011 Bustier cocktail dress with sweetheart neckline

By: burda style magazine

<http://www.burdastyle.com/projects/112011-bustier-cocktail-dress->

---



11/2011 Bustier cocktail dress with sweetheart neckline burda style magazine patterns FAQ

## Materials

Satin with widthwise stretch

---

### Step 1 — Preparation



Paper cut for ANSI A (German DIN A4) prints:

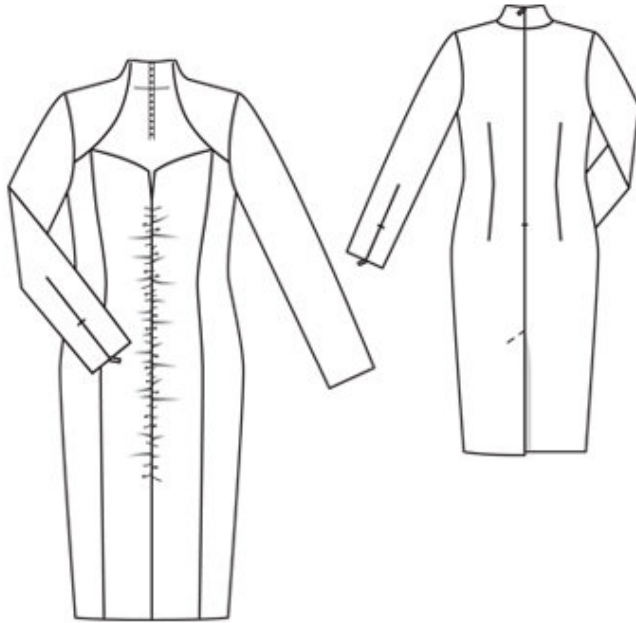
This pattern is printed on 8.5 × 11 sheets of plain paper. Do not scale or center pages before printing. Wait until all sheets are printed out before beginning to tape them together. **Do not cut out pattern pieces yet**— Arrange the sheets on a large, hard, flat surface so that they fit together, matching up like numbers and letters (i.e. 6A to 6A). To tape pattern together, fold under the margin of one piece (6A) and tape right against the line of it's matching number/letter (6A).

**burda style magazine pattern do not have seam allowance included.**

Seam and hem allowances to be added: Seams and edges 1.5 cm (5/8 in).

---

### Step 2 — Cutting out



Satin:

1centre front 2x

3side front 2x

4front yoke with collar 4x

5back 2x

6sleeve 2x

7front facing 2x

Lining:

2centre front 4x

3side front 2x

5back 2x

Interfacing (G 785): See pattern layout. Iron Vilene Bias Tape/stay tape to edges of sleeve vents, to slit edges of lining pieces, and also to upper edges of fronts, back neck edges, and front and back armhole edges.

---

## Step 5 — Darts

Stitch the darts in the centre front lining pieces. Press darts down. Gather the centre fronts (piece 1) along centre seam edges — to 10 — 10.5 — 11 — 11.5 — 12 cm (4 — 4 1/8 — 4 3/8 — 4 1/2 — 4 3/4 ins) between the top asterisks and below this to a length of 47.5 cm (18 1/4 ins), down to the bottom asterisk. Baste each gathered centre front piece to the corresponding centre front lining piece and treat as one layer of fabric from now on. Use remaining centre front lining pieces to line the dress.

---

## Step 6 — Side and center pieces

Stitch side fronts to centre front pieces, beginning and ending exactly at seam line on upper edge. Press seam allowances open.

---

## Step 7 — Collar

Stitch back darts and press toward centre. Stitch interfaced front yokes to back pieces, exactly from corner (shoulder seams). At each corner between the shoulder and the collar, clip the seam allowance of the yoke toward the end of the seam. Press seam allowances open. Stitch integrated collars on front yokes to back neck edge. Press seam allowances open.

---

## Step 8 — Zip

Sew the invisible zip to the back opening edges, beginning at upper edge of collar. Stitch the centre back seam from the vent to the zip. Press the seam allowances open and press the left vent facing to the inside. Lay the right vent underlap onto the left back. To avoid needing to clip the allowance, press the allowance of the right back under, above the vent, tapering as you go. Press the allowance on the long edge of the underlap to the inside. Topstitch 7 mm (1/4 in) from the edge of the underlap. Topstitch left back diagonally at end of vent, catching the underlap

---

## Step 9 — Side seams

Stitch the side seams.

---

## Step 10 — Yokes

Neaten lower edges of front neck facings. Baste facings to centre front lining pieces, with wrong side facing right side. Stitch lower edges in place. Stitch front section seams of lining. Stitch centre back seam, leaving the slit for the zip open, 2 cm (3/4 in) longer than the dress slit. Stitch the back darts and press toward the centre back. Stitch the front yoke pieces with no interfacing to the back lining pieces. At each corner between shoulder and collar, clip seam allowance of yoke to end of seam. Press the seam allowances open. Stitch the integrated collars of the front yokes to the back neck edge. Press seam allowances open.

---

## Step 11 — Lining

Lay the back lining pieces, collar and yoke pieces right sides together with dress. Baste the upper edges together. At the zip opening, turn the collar back, approx. 5 mm (3/16 in) before the opening edges, and pin to upper edge. Turn slit allowances with zip to outside and pin to upper edge of collar. Stitch along upper edge of collar then stitch yoke edges together, as far as marking. Clip seam allowances at marking. Turn allowances on slit edges to inside. Turn the back lining pieces, inside collar, and yoke pieces up and stitch to seam allowances, as far as possible, close to seam. Turn back lining pieces to inside. Lay the collar and yokes each wrong sides together. Sew the narrow edges of the collar to the zip tapes. Pin the collar joining seams and shoulder seams each together. Turn the back lining pieces up and stitch the seam allowances of the collar joining seams together, as far as possible, close to the seam. Stitch the shoulder seam allowances together. Turn the lining down again. On the yokes, baste armhole edges together and baste lower edges together, from corner to seam mark, without turning edges under.

---

## Step 12 — Slit

Baste the basted-together lower edges of yoke (from the corner — seam number 2 — to the marking) to upper edges of dress, from marking at seam number 2 to section seam. Lay front lining pieces with facing right sides together with dress. Stitch front slit edges together above slit mark and stitch upper edges together, up to armhole. Turn lining at end of slit up and pin in place. Lay fronts right sides together and stitch centre front seam below slit mark. Remove pins, then stitch centre seam of lining. Press seam allowances of centre seam open. Turn lining to inside. Press faced edges.

---

## Step 13 — Lining

Stitch side seams of lining. Baste lining to armhole edges. On back, sew lining to zip.

---

## Step 14 — Sleeve darts with zips

Sew the short invisible zips to slit edges of sleeve darts — teeth of zips begin at marked hem line. Stitch the darts above the zips. Press dart allowances open, pressing points of darts flat. Trim the zips approx. 3 cm (1 1/4 ins) above each slit and slide ends into darts.

---

## Step 15 — Sleeves

Stitch sleeve seams. Press hem allowances to inside and sew in place by hand.

---

## Step 16 — Sleeve caps

Set in sleeves, easing sleeve caps.

---

## Step 17 — Hem

At hem edge, open vent facing again. Press the hem allowance to the inside. Sew hem in place by hand. Turn vent facing to inside again and sew in place, over hem. Turn hem allowance of lining to inside, turn raw edge under, and stitch so that lining is 2 cm (3/4 in) shorter than the dress. At back vent, turn in lining edge and pin to right underlap edge of vent. Trim other edge of lining to 1 cm (3/8 in) before hemmed underlap edge. Clip 1 cm (3/8 in) diagonally into top corner. Turn in edge of lining and pin to vent facing of left back. At top of vent, turn lining edge under and pin to underlap. Sew lining in place at back vent.

---

## Step 3 — Working with beaded fabrics

To prevent the beads from breaking the needle of your sewing machine, remove the beads along the seam line and the seam allowances. Use a hammer to carefully break the beads then remove them from the fabric. Use your machine's one-sided edge foot (zipper foot) to stitch seams.

---

## Step 4 — Gathers

Stitch the darts in the inside centre front pieces and in centre front lining pieces. Press the darts down. Gather the centre front pieces of lace fabric (piece 1) along centre seam edges, to 10 — 10.5 — 11 — 11.5 — 12 cm (4 — 4 1/8 — 4 3/8 — 4 1/2 — 4 3/4 ins) between top asterisks, and below this to a

length of 47.5 cm (18 1/4 ins), down to bottom asterisk. Baste each gathered centre front to a corresponding inside centre front piece (satin) and treat as one layer of fabric from now on. Baste the remaining pieces of lace fabric to the corresponding satin pieces, with wrong side facing right side. Treat these pieces as one layer of fabric from now on.

---

**BurdaStyle**

11/2011 Bustier cocktail dress with sweetheart neckline