

Silk Robe 02/2012

By: burda style magazine

<http://www.burdastyle.com/projects/silk-robe-022012>



Silk robe sewing pattern with collar. This robe is luxurious in a beautiful printed silk fabric. Make it in cotton or why not flannel for a more warm feeling. This can also double as a great coat! burda style magazine patterns FAQ

Materials

Printed silk satin, width: 140 cm (55 ins) length: 3.10 3.15 3.20 m (3 1/2 yds). Plain silk satin, width: 135 cm (53 ins) length: 1.65 m (1 7/8 yds) for all sizes. Vilene Bias Tape/ stay tape.

Step 1 — Preparations



Paper cut for ANSI A (German DIN A4) prints:

This pattern is printed on 8.5 × 11 sheets of plain paper. Do not scale or center pages before printing. Wait until all sheets are printed out before beginning to tape them together. **Do not cut out pattern pieces yet—** Arrange the sheets on a large, hard, flat surface so that they fit together, matching up like numbers and letters (i.e. 6A to 6A). To tape pattern together, fold under the margin of one piece (6A) and tape right against the line of it's matching number/letter (6A).

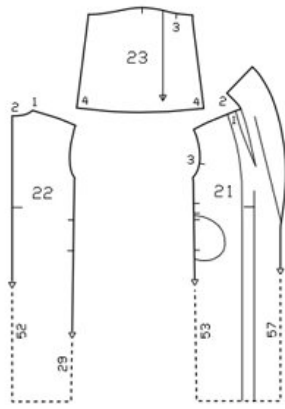
Trace the pattern pieces from the pattern sheet. Follow lines and details for style 106 (This pattern also includes lines and markings for style 105 that should be ignored as well as pattern piece 24).

Lengthen pieces 21 and 22 as indicated. Trace the pocket piece from piece 21 as a separate pattern piece it is the same for all sizes. Trace the facing from piece 21 as a separate pattern piece.

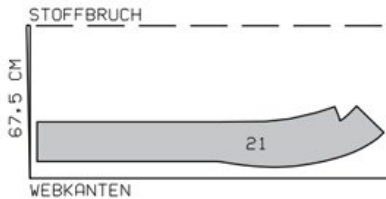
burda style magazine pattern do not have seam allowance included.

Seam and hem allowances to be added: Seams and edges 1.5 cm (5/8 in), hem 4 cm (15/8 ins), sleeve hems 5 cm (2 ins).

Step 2 — Cutting out

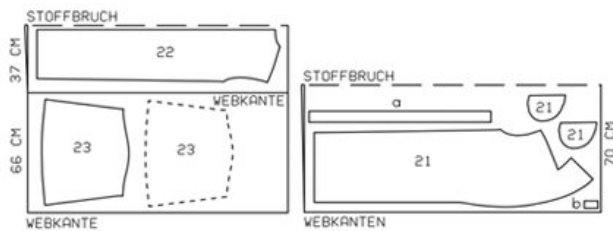


Plain fabric, 135 cm wide



Stoffbruch = fold
Webkante = selvage

Printed fabric, 140 cm wide



Printed fabric:

- 21 piece with under collar, cut 2x
- pocket piece, cut 4x
- 22 back piece, cut 2x
- 23 sleeve piece, cut 2x

Also draft and cut the following pieces (not included on the pattern sheet):

- a) tie belt, 6 cm (2 1/2 ins) wide, finished width 3 cm (1 1/4 ins), length:
Size 36/38: 200 cm (78 3/4 in)
Size 40/42: 208 cm (82 in)
Size 44/46: 216 cm (85 ins)

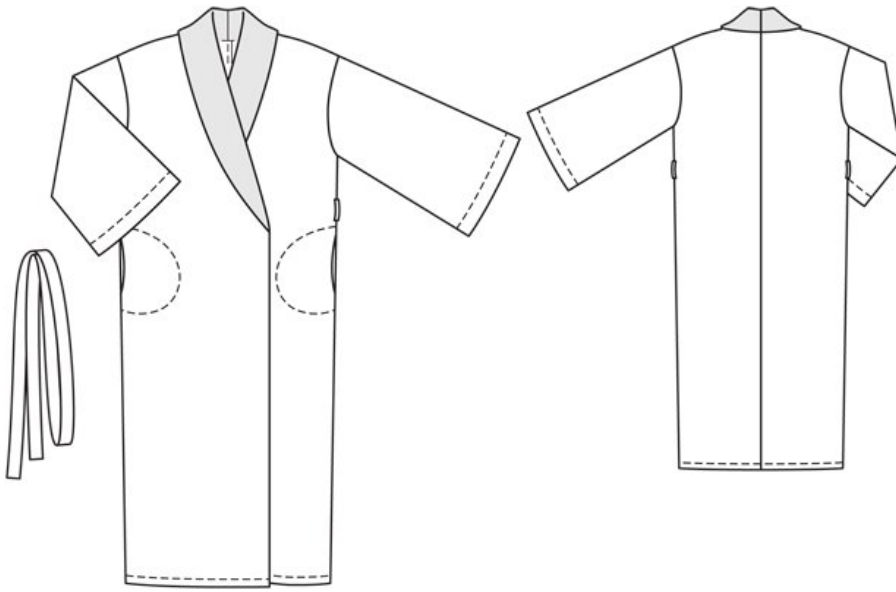
- b) 2 belt loops, 8 cm (3 1/4 ins) long, 4 cm (1 5/8 ins) wide (incl. allowances).

Plain fabric:

- 21 front piece facing (cut only to the facing line plus seam allowance) , cut 2x

Iron Vilene Bias Tape/ stay tape to wrong side of armhole edges and front shoulder seam edges.

Step 3 — Sewing



Lay the back pieces right sides together. Line up, pin and sew the center back seam. Press the seam allowances open and neaten them with zigzag or overlock stitch.

Lay the front pieces and the back pieces right sides together. Line up and stitch the shoulder seams (seam number 1). Press shoulder seam allowances toward back and neaten together with zigzag or overlock.

Lay the integrated collars on the front pieces right sides together. Line up, pin and sew the back seam of the collar. Press seam allowances open and neaten with zigzag or overlock.

Work from center back to sew the collar to neck edge, right sides facing. Make sure to line up the center back seam of the collar with the center back seam of the back piece. Sew the neck edge and the dart as continuation of this seam. Trim dart allowances to 1 cm (3/8 in) wide. Press seam allowances onto collar and press dart allowances toward front. Neaten the allowances.

Stitch center back seam on integrated collar sections of front facings. Stitch darts in front facings, beginning exactly on marked shoulder seam line. Trim dart allowances to 1 cm (3/8 in) wide. Press darts open, pressing points of darts flat.

Pin front facings right sides together with fronts and pin collar edges together. Stitch along front edges and edge of collar. Trim seam allowances. Turn facings to inside and turn collar right side out. Press front edges and collar. Turn in inside edge of collar and baste over joining seam. Work from right side of garment to stitch along line of seam.

Lay the sleeves right sides together with the front and back pieces, line up the armhole seam and sew together. Neaten and press the seam allowances toward sleeves.

Line up the side seams and the sleeve seams, right sides together and sew as continuous seams. Do not stitch across the pocket openings.

Pin pocket pieces right sides together with the seam allowances on pocket opening edges. Stitch in place, directly along the seam lines. Press pocket pieces forward and stitch to wrong side of fronts. To do this, place

and pin the paper pattern piece for the pocket to the front side of the fabric so it matches the pocket piece on the inside and stitch along its edge.

Unfold the facings at the hem. Fold the hem allowance to inside and fold edge under. Stitch 2 cm (3/4 in) from the lower edge of the hem. Turn facings to inside again and fold the seam allowance edges under. Sew to the hem allowance and to the shoulder seams.

Fold and press sleeve hem allowances to inside, turn edges under, and stitch 4 cm (1 5/8 ins) from lower edges.

Fold tie belt lengthwise, right side facing in. Stitch edges together, leaving an opening for turning. Turn belt right side out. Sew opening closed.

Make the belt loops by first folding 1cm of the long sides of the loop pieces to the inside. Press. Then fold the loops in half and press again. Stitch together closely to the folded edge. Neaten the raw edges of the loops and sew to the side seams of the garment, matching the marking on the pattern. Fold in 1 cm of each end of the loops and topstitch in place on the garment from the front.

BurdaStyle

Silk Robe 02/2012