

01/2011 Buttonless coat

By: burda style magazine

<http://www.burdastyle.com/projects/012011-buttonless-coat>



Buttonless coat burda style magazine patterns FAQ

Materials

knit loden fabric

Step 1 — Preparation

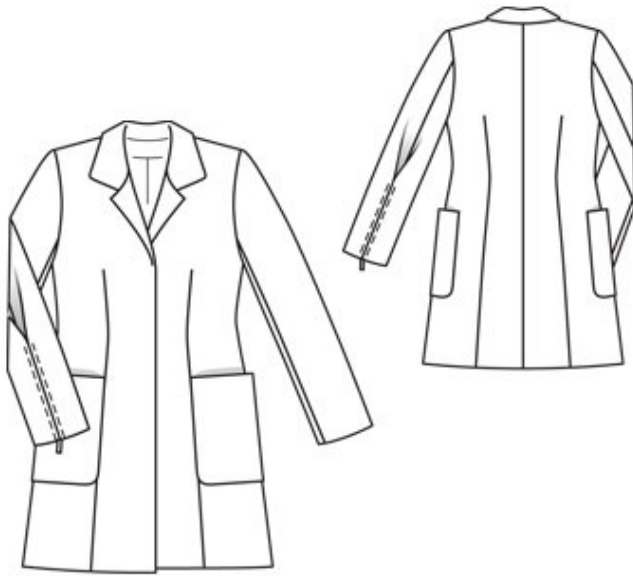
Größen, Tailles, Sizes						2		3		4		
1	N		L		K		Oberweite Tour de poitrine Bust		Tailleweite Tour des taille Waist		Hüftweite Tour des hanches Hip	
	5'6" 168 cm		5'9" 176 cm		5'3" 160 cm		ins	cm	ins	cm	ins	cm
	US	Eur.	US	Eur.	US	Eur.						
	6	32	6	64	6	16	30	76	23	58	32 ½	82
	8	34	8	68	8	17	31 ½	80	24 ½	62	34	86
	10	36	10	72	10	18	33	84	26	66	35 ½	90
	12	38	12	76	12	19	34 ½	88	27 ½	70	37	94
	14	40	14	80	14	20	36 ½	92	29 ½	74	38 ½	98
	16	42	16	84	16	21	37 ½	96	30 ½	78	40 ½	102
	18	44	18	88	18	22	39 ½	100	32 ½	82	41 ½	106
	20	46	20	92	20	23	41	104	34	86	43 ½	110
	22	48	22	96	22	24	43 ½	110	36 ½	92	45 ½	116
	24	50	24	100	24	25	45 ½	116	38 ½	98	48	122
	26	52	26	104	26	26	48	122	41	104	50 ½	128
	28	54	28	108	28	27	50 ½	128	43 ½	110	52 ½	134
	30	56	30	112	30	28	52 ½	134	45 ½	116	55 ½	140
	32	58	32	116	32	29	55 ½	140	48	122	57 ½	146
	34	60	34	120	34	30	57 ½	146	50 ½	128	60	152

Trace the pattern pieces from the pattern sheet. Follow lines and details for style 110.

Seam and hem allowances:

Seams and edges 1.5 cm (5/8 in), hem 4 cm (15/8 ins), lining 1.5 cm (5/8 in).

Step 2 — Cutting out



Loden:

â— 1front 2x

â— 2back 2x

â— 3upper sleeve 2x

â— 4under sleeve 2x

â— 5back facing, on a fold 1x

â— 9collar, on a fold 2x

10pocket 2x

Lining: pieces 1 and 10 minus width of facing; piece 2 minus width of facing and with an ease pleat of about 2 cm (3/4 in) at centre back; and pieces 3 and 4.

Interfacing: See pattern layout. Also interface hem allowances.

Step 3 — Darts

Stitch centre back seam and back darts. Press centre seam allowances open. Cut darts along centre to about 5 cm (2 ins) before points. Press darts open, pressing points flat. Stitch darts in fronts. Trim dart allowances to 1.5 cm (5/8 in) and press open, pressing points flat. Stitch side seams and shoulder seams.

Step 4 — Self-facings

Unfold front self-facings and stitch to back facing. Stitch facing to neck edge, from each front edge (fold) to centre front. Leave facings lying right sides together with coat for now.

Step 5 — Collar

Stitch collar pieces right sides together along outer edges, beginning and ending exactly on seam line of joining edge. Turn collar right side out and press. Lay collar between coat and facing. Stitch undercollar to neck edge of coat and stitch top collar to facing. Press seam allowances open. Turn facing to inside. Pin collar joining seams together. Lay facing in back up again and stitch seam allowances together, close to collar joining seam.

Step 6 — Hem

Unfold facings at hem. Press hem allowance to inside but do not yet sew. Turn facings to inside again.

Step 7 — Patch pockets

Stitch pocket lining pieces to self-facings of pockets, leaving about 5 cm (2 ins) open in centre of seams, for turning. Press allowances onto lining pieces. Turn facings and lining to outside and stitch to side and lower edges of pockets. Turn pockets right side out. Sew seam openings closed. Pin pockets to coat at marked placement lines and sew in place by hand.

Step 8 — Sleeve seams

Stitch sleeve seams. Press sleeve hem allowances to inside and sew in place by hand.

Step 9 — Zips

Fold each sleeve on marked fold line, wrong side facing in, and press fold edge. Separate zips. Turn under top ends of zip tapes. Baste zips under fold edges so that they close from bottom to top. Stitch zips in place, stitching 7 mm (1/4 in) from edge.

Step 10 — Sleeve caps

Set in sleeves, easing sleeve caps. Sew shoulder pads in place.

Step 11 — Sew lining

Stitch allowances of centre seam on back lining pieces together, 1 cm (3/8 in) from edge. To form ease pleat, stitch along centre back, about 5 cm (2 ins) long, at both upper and lower edges, and baste in between. Press pleat to one side. Stitch darts and seams of lining. Set in sleeve linings.

Step 12 — Line coat, hem

Stitch lining to inside edges of facing, laying hem allowance down. Lay lining inside coat with wrong sides facing, pulling linings into sleeves. Turn hem allowance to inside and sew in place by hand. Turn in lining along hem edge, press fold edge lightly, push upward in a shallow curve, and pin to hem allowance. Sew lining in place. Lay extra length of lining down and press lightly. Turn in sleeve lining and sew to sleeve hem allowance. Lay extra length down and press.

BurdaStyle

01/2011 Buttonless coat