

6/2010 Tunic dress with ruched back

By: burda style magazine

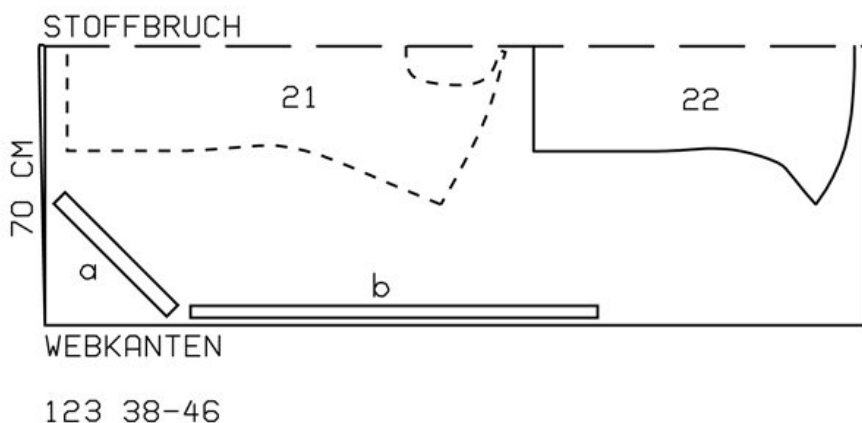
<http://www.burdastyle.com/projects/62010-tunic-dress-with-ruched>

Tunic dress with ruched back burda style magazine patterns FAQ

Materials

Crpe de chine

Step 1 — Preparation

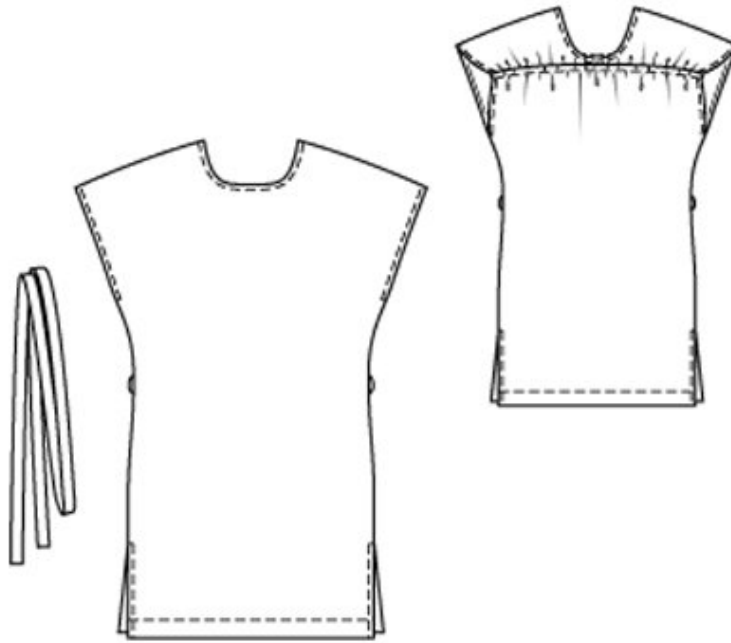


Trace the pattern pieces from the pattern sheet.

Seam and hem allowances:

Seams and edges 1.5 cm (5/8 in), hem 3.5 cm (1 1/2 ins).

Step 2 — Cutting Out



21 front with back yoke, on a fold 1x

22 back, on a fold 1x

a) bias strip for neck edge, 74 — 75 — 76 — 77 — 78 cm (29 1/4 — 29 3/4 — 30 — 30 1/2 — 30 3/4 ins) long, 4 cm (1 5/8 ins) wide (incl. allowance),

b) tie belt, a total of 204 — 208 — 212 — 216 — 220 cm (80 1/4 — 82 — 83 1/2 — 85 — 86 3/4 ins) long, 3 cm (1 1/4 ins) wide, finished width 1.5 cm (5/8 in).

Step 3 — Stitch centre seam of back yoke

Stitch centre seam of back yoke. Neaten seam allowances together and press to one side. Stitch yoke to back. Press seam allowances down and stitch as marked to form casing.

Step 4 — Bias strip and neck edge

Fold bias strip for neck edge lengthwise and press, right side facing out. Pin doubled bias strip to neck edge so that fold edge of strip lies on garment piece, 1 cm (3/8 in) past seam line. Turn back end of strip which lies underneath and lay other end over it. Stitch along neck edge. Trim seam allowances. Lay bias strip to inside and press edge. Topstitch 7 mm (1/4 in) from neck edge.

Step 5 — Elastic

Pull elastic into stitched casing on back. Stitch across ends of elastic for a finished length of 50 — 51 — 52 — 53 — 54 cm (19 3/4 — 20 1/4 — 20 1/2 — 21 — 21 1/4 ins).

Step 6 — Side seams

Stitch side seams from below marking at seam number 2 to slit mark. Press allowance at edges of armholes to inside, turn in to a width of 7 mm (1/4 in), and stitch.

Step 7 — Hem

Press hem allowances to inside and stitch 3.5 cm (1 1/2 ins) wide.

Step 8 — Tie belt

Fold tie belt lengthwise, right side facing in. Stitch edges together, leaving a section of seam open for turning. Turn belt right side out. Sew opening closed. Work thread loops, about 2 cm (3/4 in) long, at waist level, over side seams. For each loop, stretch 3 — 4 threads, then cover them with closely spaced buttonhole stitches.

BurdaStyle

6/2010 Tunic dress with ruched back