

burda style magazine 01/2010 Dress

By: burda style magazine

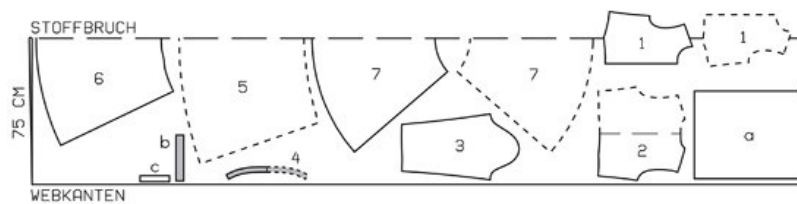
<http://www.burdastyle.com/projects/burda-style-magazine-012010-c>

Light shirt dress burda style magazine patterns FAQ

Materials

Rayon

Step 1 — Preparation



109 36-42

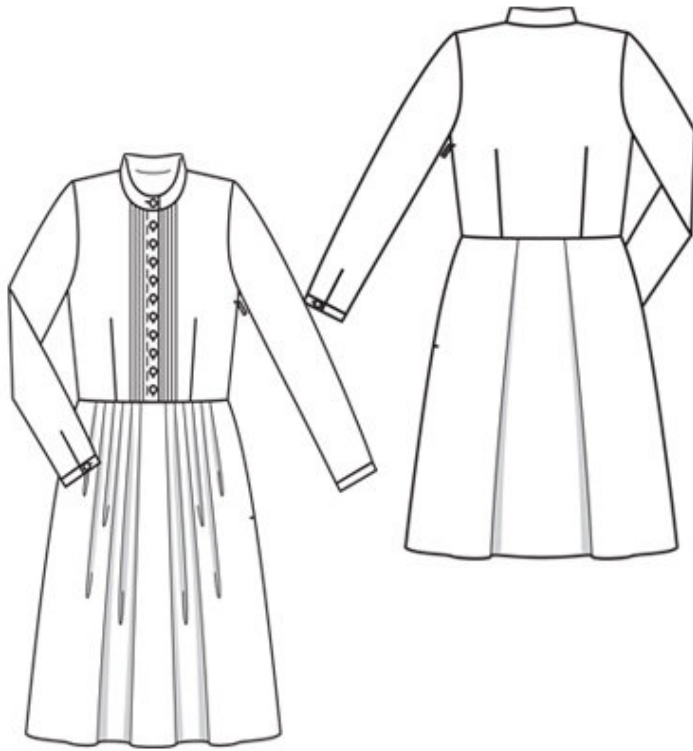
Trace the pattern pieces from the pattern sheet. Pattern piece 1 is a template which is used to the fabric pieces after tucks have been stitched on fabric pieces \hat{a} — \hat{a} — . For the inside front, trace piece 1 again to the lining line (front edge).

The buttonholes on piece 1 are marked for size 36. For sizes 38 \hat{a} — 42, mark the top buttonhole the same distance from neck edge as for size 36. The bottom buttonhole is in the same place for all sizes. Mark the other buttonholes evenly in between.

Seam and hem allowances:

Seams, edges and hem 1.5 cm (5/8 in), no allowance on vertical front edges of inside front pieces.

Step 2 — Cutting out



- 1 template for front
- 1 inside front, to lining line 2x
- 2 back, on a fold 2x
- 3 sleeve 2x
- 4 standing collar, on a fold 2x
- 5 front skirt panel, on a fold 1x
- 6 back skirt panel, on a fold 1x
- 7 inside skirt panel, on a fold 2x

- a) 2 fabric pieces for fronts, 55 cm (21³/₄ ins) long, 45 cm (17³/₄ ins) wide (incl. allowances),
- b) 2 cuffs, 23 — 23.5 — 24 — 24.5 cm (9¹/₈ — 9¹/₄ — 9¹/₂ — 9³/₄ ins) long, 4 cm (1⁵/₈ ins) wide, finished width 2 cm (3/4 in),
- c) 2 binding strips for sleeve vents, 15 cm (6 ins) long, 3 cm (1¹/₄ ins) wide (incl. allowances).

Interfacing: See pattern layout.

Step 3 — Tucks

Use basting thread to mark lines for tucks on right side of fabric pieces for fronts as follows: Mark the first line 10 cm (4 ins) from one long edge of each fabric piece (as mirror images on right and left pieces), then mark 3 more tucks next to first line, spaced 1.2 cm (1/2 in) apart. Fold fabric pieces on marked lines, with wrong side facing in, and press. Topstitch 2 mm (a scant 1/8 in) from fold edges for the tucks. Lay tucks to the side and press. Lay fabric pieces with tucks right sides together and pin tucks together exactly. Place template for the front on the fabric pieces and pin so that the first tuck lies 2.5 cm (1 in) from centre front.

Mark 1.5 cm (5/8 in) wide a seam allowances but leave vertical edge of facing without allowance. Cut out front pieces.

Step 4 — Darts

Stitch front and back darts on outside and inside pieces. Trim allowances of front darts to 1 cm (3/8 in) wide and press open, pressing points of darts flat. Press back darts toward centre. Baste inside fronts to front pieces, with wrong sides facing, matching front edges with facing fold lines. Baste inside back to wrong side of back piece. Treat these pieces as one layer of fabric from now on.

Step 5 — Facings

Fold self-facings to inside on fold line and press. Lay doubled facings to inside and press. Topstitch front edges as marked. Work buttonholes in right front. Lay right front on left front, matching centres, and baste lower edges together.

Step 6 — Side Seams and shoulders

Stitch right side seam of dress bodice. Stitch shoulder seams.

Step 7 — Standing collar

Lay collar pieces right sides together. Stitch along front and upper edges. Begin and end stitching in front exactly at seam line of joining edge. Trim seam allowances. Turn collar right side out and press. Stitch outer collar piece to neck edge. Turn in edge of inside collar piece and baste to joining seam. Topstitch collar close to joining seam.

Step 8 — Skirt

Stitch right side seam on skirt. Trim seam allowances to 7 mm (1/4 in) wide, neaten together and press to one side. Lay pleats in upper edge of skirt in arrow direction and baste. Stitch skirt to dress bodice. Press seam allowances up.

Step 9 — Zip

Sew invisible zip to left opening edges. Leave upper ends of zip tapes free. Teeth of zip begin at slit mark. Stitch left side seam above and below zip.

Step 10 — Stitch

Stitch seams of inside skirt, leaving opening for zip. Place inside skirt inside dress, with wrong sides facing. Stitch to seam allowances of skirt joining seam, stitching as close to slit as possible. Turn in edges of inside skirt at opening and sew to zip tapes. Sew remaining upper edge to seam allowances. Press hem allowance of dress and inside skirt under, turn raw edges in, and stitch.

Step 11 — Sleeve Vents and Cuffs

Slash sleeve vents as marked. Spread cut edges open to a straight line and stitch to one lengthwise edge of binding strip as narrowly as possible. Press binding strips over joining seams into vents, turn under edge to a width of 7 mm (1/4 in), and sew to inside, turned under along joining seams. Mitre binding at top of vent, on inside. Lay binding to inside on front edges of vents and baste to bottom edge. Stitch sleeve seams.

Stitch cuffs to lower edges of sleeves. Press seam allowances of joining seam and of other long edge of cuffs onto cuffs. Fold cuffs lengthwise, right side facing in, and stitch across ends. Turn right side out. Baste inside edges in place. Topstitch cuffs close to joining seams.

Step 12 — Sleeves

Set in sleeves, easing sleeve caps.

Step 13 — Buttonhole

Work one buttonhole each in right end of collar and in front ends of cuffs.

BurdaStyle

burda style magazine 01/2010 Dress