

10/2010 Tie-front blouse

By: burda style magazine

<http://www.burdastyle.com/projects/102010-tie-front-blouse>



Tie-front blouse burda style magazine patterns FAQ

Materials

Poplin

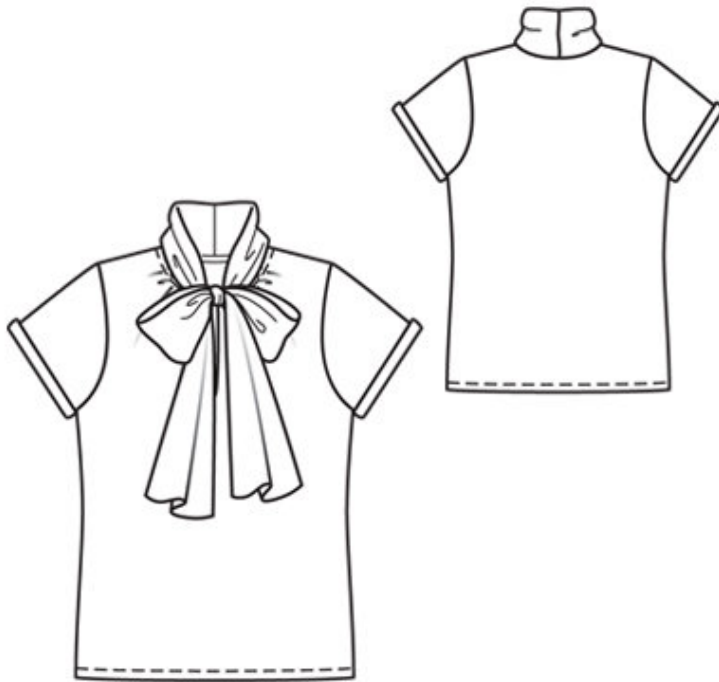
Step 1 — Preparation

Trace the pattern pieces from the pattern sheet.

Seam and hem allowances:

Seams, edges and hem 1.5 cm (5/8 in).

Step 2 — Cutting Out



21 front, on a fold 1x

22 back, on a fold 1x

23 sleeve 2x

a) front slit facing, 19 â— 20 â— 21 â— 22 â— 23 cm (7 1/2 â— 8 â— 8 3/8 â— 8 3/4 â— 9 1/9 ins) long, 4 cm (1 5/8 ins) wide (incl. allowance),

b) bias strip for neck edge, 45 â— 46 â— 47 â— 48 â— 49 cm (17 3/4 â— 18 1/8 â— 18 1/2 â— 19 â— 19 1/4 ins) long, 4 cm (1 5/8 ins) wide (incl. allowance).

d) tie collar, 2 pieces, each 115 cm (45 1/4 ins) long, 36 cm (14 1/4 ins) wide, finished width 18 cm (7 1/8 ins).

Interfacing: Iron a strip of interfacing, about 3 cm (1 1/4 ins) long, to wrong side of fabric, over slit marking.

Step 3 — Front slit

Mark slit at centre front with basting thread. Press long edges and narrow bottom edge of front slit facing to wrong side, 7 mm (1/4 in) wide. Pin slit facing to front, over slit mark, with right sides together — bottom end extends past marked end of slit, 1.5 cm (5/8 in) wide. Working from wrong side, stitch closely around marked slit. Slash between lines of stitching. Turn facing to inside. Press edges of slit. Topstitch 1 cm (3/8 in) from edges of slit, stitching horizontally across bottom of slit.

Step 4 — Side seams and shoulder seams

Gather front neck edge between each pair of asterisks to 6.5 cm (2 5/8 ins). Stitch side seams and shoulder seams. Press hem allowance to inside and stitch 1 cm (3/8 in) from lower edge.

Step 5 — Bias strip

Fold bias strip for neck edge lengthwise and press, right side facing out. Pin folded strip to neck edge so that fold edge of strip lies on garment piece, 1.2 cm (1/2 in) past seam line. Stitch along neck edge. Trim seam allowances. Turn strip to inside, turn ends in and sew in place. Topstitch 1 cm (3/8 in) from neck edge.

Step 6 — Sleeves

Stitch sleeve seams. Turn in sleeve hem allowances and stitch. Set in sleeves, easing sleeve caps. Turn up lower edges of sleeve, twice 1.5 cm (5/8 in) wide.

Step 7 — Tie collar

Stitch centre back seam of collar. Fold collar in half lengthwise, right side facing in. Stitch edges together, leaving about 10 cm (4 ins) open at centre back, for turning. Trim seam allowances, trimming corners diagonally. Turn collar right side out and press. Baste opening closed. Pin seamed lengthwise edge of collar to back neck edge, from outside of garment, matching centres — collar points up and edge of collar lies over seam of neck edge. Edgestitch collar in place, from shoulder seam to shoulder seam.

BurdaStyle

10/2010 Tie-front blouse