

07/2011 V-neck LBD

By: burda style magazine

<http://www.burdastyle.com/projects/072011-v-neck-lbd>



LBD, little black dress sewing pattern. Dress with front pleats and pockets. burda style magazine patterns FAQ
NOTE: This pattern sheet is the same as for the Bubble Skirt and the High-waist Secretary Skirt #112, it includes pattern pieces and lines for these projects as well. Please read the instructions for information on which pattern pieces to cut for which garment.

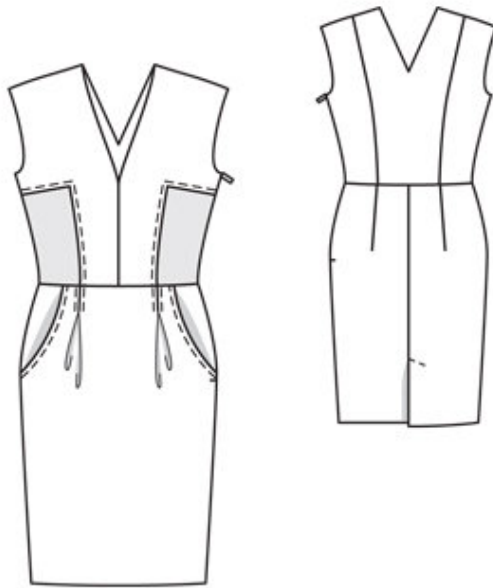
Materials

Cotton-linen blend

Step 1 — Preparation

See the pattern overview above for all pattern details. Trace the pattern pieces from the pattern sheet. Note lines and details for style 110.

Step 2 — Cutting out



Pattern layouts below show you how to place pattern pieces on the fabric. Make sure grain line on each pattern piece runs parallel to fabric selvages.

Cotton-linen

21 centre front 2x

23 centre back, on a fold 1x

24 side back 2x

25 front facing 2x

26 back facing, on a fold 1x

27 front armhole facing 2x

28 back armhole facing 2x

29 front skirt panel, on a fold 1x

30 pocket piece 2x

31 hip yoke with
integrated pocket piece 2x

32 back skirt panel 2x

Duchesse

2x side front 2x

Seam and hem allowances:

Use a ruler and tailor's chalk to mark allowances around the paper pattern pieces: 4 cm (1 5/8 ins) for hem, 1.5 cm (5/8 in) at all other seams and edges. Cut out the fabric pieces on these lines.

Interfacing

Cut all pieces shaded in grey on the pattern layout also of interfacing including seam allowances. Iron the interfacing on the wrong side of the respective fabric pieces. Also iron small pieces of interfacing on centre front pieces over corners (illus. 2).

Transfer pattern lines to the fabric:

Lay pieces with interfacing right sides together or fold in half again and pin the paper pattern pieces to fabric pieces again.

Transfer pattern piece outlines (seam and hem lines) and all other lines and markings on the pattern pieces, except the grain line, to the wrong fabric side with a tracing wheel and Burda copy paper (see detailed instructions included with the pack). Hand baste along fold lines, abutting lines and pleat lines to make these lines visible on the right fabric side.

Step 3 — Upper dress: front section seams

Lay each side front on a centre front piece, from the side edge to the corner — lower edge of side front piece points up. Pin the section seam. Stitch, beginning and ending exactly at the corner (1). Clip seam allowances of centre front pieces into corners, close to each last stitch (2). Pin the centre front pieces to side front pieces, from the corners to lower edges, right sides facing. Stitch (3). Press seam allowances onto centre front pieces and neaten edge together

Step 4 — Back section seams

Lay the side back pieces right sides together with the centre back piece. Pin the section seams. Stitch (4). Press seam allowances open and neaten edges.

Step 5 — Shoulder seams

Lay the front pieces right sides together with the back. Pin the shoulder seams. Stitch. Press seam allowances open and neaten edges.

Step 6 — Neck edge and centre front seam

Stitch shoulder seams of facing. Press seam allowances open. Neaten inside edge of facing.

Pin the facing right sides together with the neck edge. Stitch, beginning and ending in front, exactly at marking. Trim seam allowances. Clip allowances of back neck edge into corner, close to the line of stitching (5). Fold front ends of facing up at marking and pin in place (6). Lay the front pieces right sides together. Pin the centre front seam, from the marking to lower edge. Stitch (7). Turn the facing to the inside. Press allowances of centre front seam open and neaten edges. Press neck edges. Sew front ends of facing together by hand, from the marking. Sew the facing to the seam allowances.

Step 7 — Skirt - Pleats

Fold the front skirt panel on each middle pleat line, right side facing in. Pin the side pleat lines together and stitch together, from upper edge to pleat arrow (8). Unfold the skirt panel again and press the pleats so that each middle pleat line meets the seam. Baste the pleats to the upper edge of the skirt

Step 8 — Hip yoke pockets

Pin the pocket pieces right sides together with the pocket opening edges of the front skirt panel. Stitch (9). Trim the seam allowances. Turn the pocket pieces to the inside. Press the edges of the pocket openings. Pin the edges of the pocket openings to the hip yokes, to meet abutting lines (10). Pin the pocket pieces together. Stitch (11). Neaten the seam allowances together. Baste the pocket pieces to upper and side edges.

Step 9 — Centre back seam, vent

Lay back skirt panels right sides together. Pin the centre back seam, pinning the vent closed. Stitch the centre back seam from upper edge to slit mark. Backstitch to secure start and end of seam. Use a long stitch setting to sew vent closed (12). Press the seam allowances open, from upper edge to approx. 5 cm (2 ins) above slit mark. Press allowances on edges of vent onto right skirt panel, tapering allowance of right skirt panel above vent to avoid the need to clip into it (13). Neaten edges of vent and seam allowances. Press seam allowance to inside on vent underlap (left back piece) and stitch. Work from the right side of the fabric to topstitch the right skirt panel at an angle, as marked on the pattern, thereby stitching the allowances at the edges of the vent.

Step 10 — Darts

Fold each skirt panel so that the dart lines meet. Pin the dart lines together and stitch together from upper edge to point of dart. Do not backstitch at point of dart but knot ends of thread securely (14). Press darts toward centre.

Step 11 — Waist seam

Lay the back piece right sides together with the back skirt panel and lay the front piece right sides together with the front skirt panel. Pin the waist seam. Stitch the seam. Neaten edges of seam allowances together and press up.

Step 12 — Right side seam

Lay the front right sides together with the back. Pin the right side seam, matching seams and seam lines. Stitch. Press the seam allowances open and neaten edges.

Step 13 — Invisible zip, left side seam

Open the zip and push the coil back with your thumbnail, to reveal the seam line between the edge of zip tape and coil. Place the open zip face down on the right fabric side of the back opening edge, so that teeth of zip begin at marked edge of armhole. In order to stitch the zip in place exactly along the marked seam line, you must first calculate the distance between the zip tape and the edge of the fabric as follows: width of seam allowance minus 1 cm (3/8 in) tape width = distance from edge of fabric. This equals 5 mm (3/16 in) if the width of the seam allowance measures 1.5 cm (5/8 in).

Pin top end of zip tape in place the calculated distance from the edge of the fabric. The bottom end of the zip will extend past the marked end of the opening. Place the presser foot on the zip so that the coil is in the notch to the right of the needle. Stitch the zip in place as far as the slit mark (15). Close the zip. Place the other zip tape face down on the front opening edge (right fabric side) and pin in place at the top (16). Open

the zip. Place the presser foot on the top end of the zip so that the coil is in the notch to the left of the needle. Stitch the zip in place to the slit mark (17). Close the zip. Lay the front right sides together with the back and pin the left side seam edges together, from the bottom to the slit mark. Stitch, stitching as close as possible to the last stitch of the zip seams and turning the loose ends of the zip tapes aside, over the seam allowances (18). Press the seam open and neaten the edges.

Step 14 — Face edges of armholes

Stitch the shoulder seams of the armhole facings. Stitch the side seam of the right armhole facing. Press the seam allowances open. Neaten the inside edges of the facing

Pin the facings right sides together with the corresponding edges of the armholes. At the left armhole, turn the side edges of the facing back, approx. 5 mm (3/16 in) before the edge of the opening, and pin upper edge in place. Turn allowances at the edges of the opening to outside and pin to the edge of the armhole, over the facing (19). Stitch the facings to the edges of the armholes. Trim allowances. Turn facings and allowances at the edges of the opening to the inside. Sew the facings to the zip tapes and to the seam allowances.

Step 15 — Hem

Undo the basting at the back vent. Open the vent facing out flat. Neaten the lower edge of the skirt. Press the hem allowance to the inside and stitch the hem in place loosely by hand. Fold the facing to the inside again and sew to the hem.

Step 16 — Decorative hand stitching

On the centre front, hand sew running stitches along the section seams and on the skirt sew running stitches along the edges of the pocket openings, spaced 1 cm (3/8 in) from each edge. Stitch length and stitch spacing = 1 cm (3/8 in). Also work decorative stitching 5 mm (3/16 in) to each side of each pleat line.

BurdaStyle

07/2011 V-neck LBD