

# Mock Two-Piece Dress

By: burda style magazine

<http://www.burdastyle.com/projects/mock-two-piece-dress>

---



Mock two-piece dress sewing pattern. This amazingly retro sewing pattern looks like a two-piece but is actually a dress. The bodice in our version is made from thin lamb nappa leather and the skirt from Natt fabric. These materials can naturally be substituted for any dress fabric with some body.

## Materials

Lamb nappa leather for bodice. To make this style in size 18, you will need 5 leather skins with a total of approx. 23 sq. ft. altogether (1 sq. ft. = 30 × 30 cm). Ask your leather dealer about the requirements for larger sizes since leather skins can vary greatly. We recommend you take the paper pattern with you when buying the leather. Fabric for the skirt, width: 140 cm (55 ins) length: 1.45 m (1 3/4 yds) for all sizes. Lining, width: 140 cm (55 ins) length: 0.50 m (5/8 yd). Bias Tape/stay tape. Invisible zippers, one 22 cm (9 ins) long and one 40 cm (16 ins) long, and a special presser foot. Textile adhesive (e.g. Rudolfix, Gutermann Klebenaht HT 2).

---

## Step 1 — Preparations



This pattern is printed on 8.5 × 11 sheets of plain paper. Do not scale or center pages before printing. Wait until all sheets are printed out before beginning to tape them together. **Do not cut out pattern pieces yet**— Arrange the sheets on a large, hard, flat surface so that they fit together, matching up like numbers and letters (i.e. 6A to 6A). To tape pattern together, fold under the margin of one piece (6A) and tape right against the line of it's matching number/letter (6A).

Trace the pattern pieces from the pattern sheet following the lines and markings for the correct size. Lengthen piece 10 as indicated.

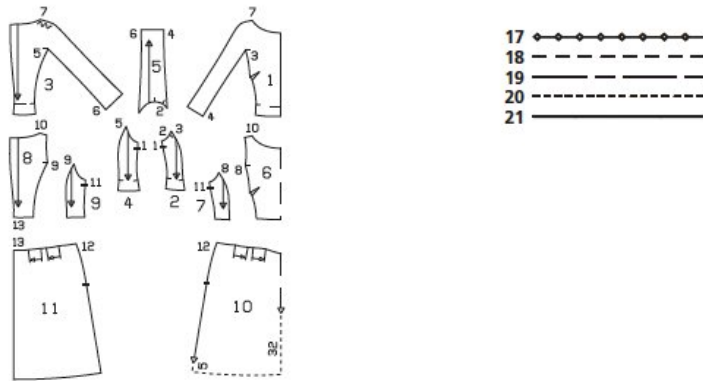
**burda style magazine pattern do not have seam allowance included.**

Seam and hem allowances to be added: Seams and edges 1.5 cm (5/8 in), hem and sleeve hems 4 cm (1 5/8 ins).

---

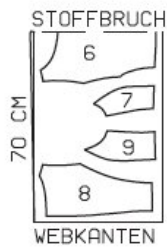
## Step 2 — Cutting out

Pattern pieces 1 to 11

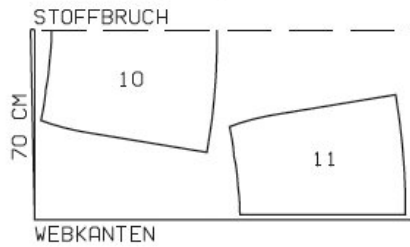


Due to the difference in size of leather pieces, no cutting diagram is provided for the leather bodice pieces.

Lining, 140 cm width



Skirt fabric (Natté), 140 cm width



Stoffbruch = fabric fold  
Webkanten = selvage

Lamb nappa leather (bodice):

- 1 centre front  
with integrated sleeve 2x
- 2 side front 2x
- 3 centre back  
with integrated sleeve 2x
- 4 side back 2x
- 5 lower sleeve piece 2x

Lining:

- 6 centre front, on a fold 1x
- 7 side front 2x
- 8 centre back 2x
- 9 side back 2x

Natt (Skirt) :

- 10 front skirt panel,  
on a fold 1x
- 11 back skirt panel 2x

Bias Tape/stay tape: Iron to wrong side of neck edges on leather pieces and of armhole edges on lining pieces.

---

### Step 3 — Sewing



On bodice of lining fabric, stitch bust darts, centre back seam, and front and back side seams together. Lay front bodice on back bodice, with wrong sides facing and stitch shoulder seams together, beginning exactly at marked neck edge. Trim allowances on armhole edges to 7 mm (1/4 in), neaten, and press to inside. Stitch 5 mm (3/16 in) from edges. Stitch right side seam.

On back skirt panels, stitch centre back seam. Work from inside to stitch pleats in skirt front and back in place, from upper edge to arrow mark. Press pleats in direction of arrows and baste to upper edge of skirt. Stitch right side seam of skirt together.

Stitch top of skirt to bodice of lining fabric along the waistline. Press seam allowances up.

Sew invisible zipper into dress at the left open slit edges. Finish off left side seam by stitching side seam together above and below the zipper.

Press hem allowance of the skirt up to the inside and sew in place by hand.

Stitch bust darts in bodice of leather. Cut darts along centre line and press open, pressing points of darts flat. Stitch centre front and back seams right sides together. Press seam allowances open. Stitch side fronts to centre fronts, from corners (seam number 3) to lower edges.

Stitch side backs to either side of the centre back piece from corner (seam number 5) to lower edges. Clip seam allowances of centre front and back into corners, close but not through stitching lines. Stitch right side seam (seam number 1). Sew invisible zipper to left side slit edges, beginning at marked hem line. Zipper should open from bottom to top. Finish the left side seam by stitching the seam above the zipper closed from underarm to top edge of zipper.

Stitch lower sleeve pieces to integrated sleeves on front and back (seam numbers 4 and 6), not catching allowances of section seams. Press seam allowances open. Stitch lower sleeve pieces right sides together with armhole edges of side front and back pieces, from corner to corner, matching sleeve attachment marks (seam number 2) and matching seam mark on each lower sleeve piece to side seam. Stitch upper sleeve seams (seam number 7), beginning exactly at marked neck edge. Press seam allowances open. Turn hem allowances on bodice and sleeves to inside and glue in place (textile adhesive).

Pull bodice of lining fabric over bodice of leather, with wrong side facing right side, and stitch together along neck edge. Turn lining up and stitch to seam allowances, close to seam. Turn lining to inside and press neck edge.

---

**BurdaStyle**

Mock Two-Piece Dress