

Gathered Tunic Top 06/2012

By: burda style magazine

<http://www.burdastyle.com/projects/gathered-tunic-top-062012>



This is a sleeveless tunic top with drawstring shoulder seams, and front applique. This tunic is perfect for summertime when made in a lightweight cotton. You could even lengthen the hemline to make a cute dress !

Step 1 — Preparations



This pattern is printed on 8.5 × 11 sheets of plain paper. Do not scale or center pages before printing. Wait until all sheets are printed out before beginning to tape them together. **Do not cut out pattern pieces yet**— Arrange the sheets on a large, hard, flat surface so that they fit together, matching up like numbers and letters (i.e. 6A to 6A). To tape pattern together, fold under the margin of one piece (6A) and tape right against the line of it's matching number/letter (6A).

Trace the pattern pieces from the pattern sheet following the lines and markings for the correct size and the correct style (125). (This pattern also includes pattern pieces, lines and markings for style 126 that should be ignored.)

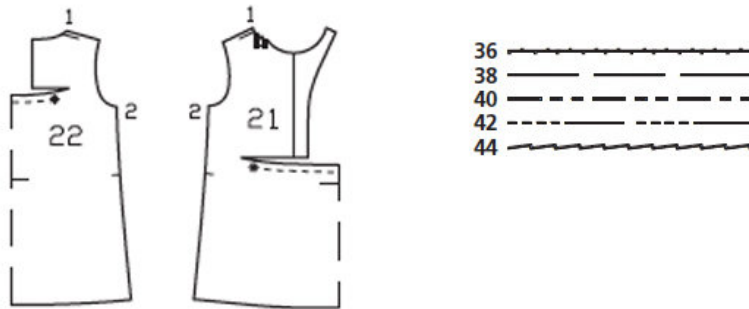
burda style magazine pattern do not have seam allowance included.

Seam and hem allowances to be added:

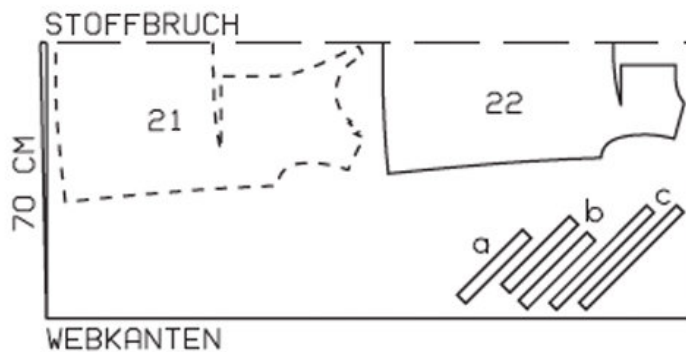
Seams and edges 1 cm (3/8 in), shoulder seams 2 cm (3/4 in), hem 2 cm (3/4 in).

Step 2 — Cutting Out

Pattern Pieces 21,22



Lay the pattern pieces following the diagram on a double layer of fabric
Fabric width = 140cm



Stoffbruch = fabric fold
Webkanten = selvage

21 front, on a fold 1x
22 back, on a fold 1x

Draft the following pattern pieces not included in the pattern:

a) bias strip for back neck edge,
24 24 25 25 26 cm long, by 3 cm (1 1/4 ins) wide (incl. allowances)

b) 2 bias strips for front armhole edges,
25 25 26 27 28 cm (10 10 10 1/4 10 3/4 11 1/8 ins) long, by 3 cm (1 1/4 ins) wide (incl. allowances)
and for back armhole edges, 25 26 27 28 29 cm (10 10 1/4 10 3/4 11 1/8 11 1/2 ins) long, by 3 cm (1 1/4 ins) wide (incl. allowances),

c) 4 tie bands, cut on bias, 35 cm (13 3/4 ins) long, by 3 cm (1 1/4 ins) wide (incl. allowances).

Step 3 — Sewing



Fold bias strips for armhole edges in half lengthwise and press, right side facing out. Stitch folded strips to armhole edges so that fold edge of each strip lies on garment piece, 7 mm (1/4 in) past seam line. Trim seam allowances. Turn strips to inside the armhole and topstitch 5 mm (3/16 in) from armhole edges.

On front neck edge, work from inside to stitch each pleat, up to arrow marking. Lay pleats in direction of arrows and press pleat seams. Baste pleats in place to neck edge.

Stitch centre back seam, right sides together. Neaten edges of seam allowances together and press to one side.

Back horizontal seam:

On horizontal edges of back, cut seam allowances up to 3 cm (1 1/4 ins) before each pointed end. Gather lower horizontal edge between asterisks as marked on pattern. Stitch horizontal seam from the centre toward each side, tapering the stitching toward ends, like darts. Press seam allowances up.

Stitch the shoulder seams, right sides together. Press seam allowances open, turn raw edges under, and stitch 7 mm (1/4 in) from each side of each seam, to form draw string casings. Fold drawstring bands lengthwise, right side facing in. Stitch 3 mm (1/8 in) from fold edge. Trim seam allowances to 3 mm (1/8 in) wide. Thread ends of thread into a darning needle and knot securely. Push needle through each fabric tube, eye end first, to turn right side out. Do not press fabric tubes flat. Pull drawstrings into casings and baste ends to neck edge.

Front and neck edges:

Turn front self-facings to outside, pin to neck edge, and press seam allowance to wrong side at shoulder seam. Fold bias strip for back neck edge lengthwise, right side facing out, and press. Pin folded bias strip to back neck edge so that fold edge of strip lies on garment piece, 7 mm (1/4 in) past seam line. Ends of strip lie on front facings. Stitch along marked neck edge. Trim seam allowances. Turn bias strips and facings to inside. Press edges. Sew facings to shoulder seams. Topstitch 5 mm (3/16 in) from back neck edge.

Front horizontal seam:

Cut seam allowances on horizontal edges of front up to 3 cm (1 1/4 ins) before each pointed end. Gather lower horizontal edge between asterisks as marked on pattern. Lay vertical front edges together and sew together at lower end with a few stitches. Stitch horizontal seam from the centre toward each side, tapering stitching toward ends, like darts. Press seam allowances up.

Stitch side seams, right sides together. Neaten seam allowances together and press onto back. Sew upper ends of seam allowances in place.

Press hem allowance up to inside, fold under by half width, and stitch.

Cut eyelet trim into four equal pieces. Trim two pieces to 6 cm (2 3/8 ins) wide. Lay each narrower trim on wider trim and baste together along straight long edges and ends. Lay trim on front, along front edges, above horizontal seam, and pin in place.

Stitch trim in place along horizontal seam and front and neck edges. Trim away extending ends of trim at neck edge.

Sew hooks and eyes to inner sides of front edges,

15 16 17 17 18 cm (6 6 3/8 6 3/4 6 3/4 7 ins) below corners of neck edge, then spacing remaining hooks and eyes approx. 5 cm (2 ins) apart.

BurdaStyle

Gathered Tunic Top 06/2012