

# Steffi

By: burdastyle

<http://www.burdastyle.com/projects/steffi>

---



The pantsuit you always needed. This outfit contains three Burda patterns: Steffi 7994 (the jacket), Franzi 9302 (a vest), and the pants named Ellen 9305. The jacket works best in heavier materials such as boiled wool. You can learn how to exchange the buttons with a leather closure in our Learning section.

# Materials

Heavier coating materials work best, like boiled wool.

## Step 1

**burda Download-Pattern  
Jacket 7994 - Instructions**

●●□□  
easy                      semi-fitted

Sizes	45 ins / 114 cm								55 ins / 140 cm							
	US 32	6	8	10	12	14	16	18	6	8	10	12	14	16	18	
yards	2 1/4	2 1/4	2 1/4	2 1/4	2 1/4	2 1/4	2 1/4	2 1/4	1 1/2	1 1/2	1 1/2	1 1/2	1 1/2	1 1/2	1 1/2	
m	1.95	1.95	2.00	2.00	2.00	2.00	2.00	1.55	1.55	1.50	1.50	1.50	1.50	1.50	1.50	

→ with nap

Interfacing  
36" x 26"  
(90 cm x 70 cm)

7x

A piece of lining

Demin fabrics,  
gabardine,  
fuller fabrics

right side

wrong side

interfacing

lining

batting

**Pattern pieces:**

### Pattern Pieces

- 1 Middle Front Piece 2x
- 2 Side Front Piece 2x
- 3 Middle Back Piece 2x
- 4 Side Back Piece 2x
- 5 Front Trimming 1x
- 6 Back Trimming 2x
- 7 Lapel Collar 2x
- 8 Upper Sleeve 2x
- 9 Lower Sleeve 2x
- 10 Pocket 2x
- 11 Lining Pocket 2x

## Step 2



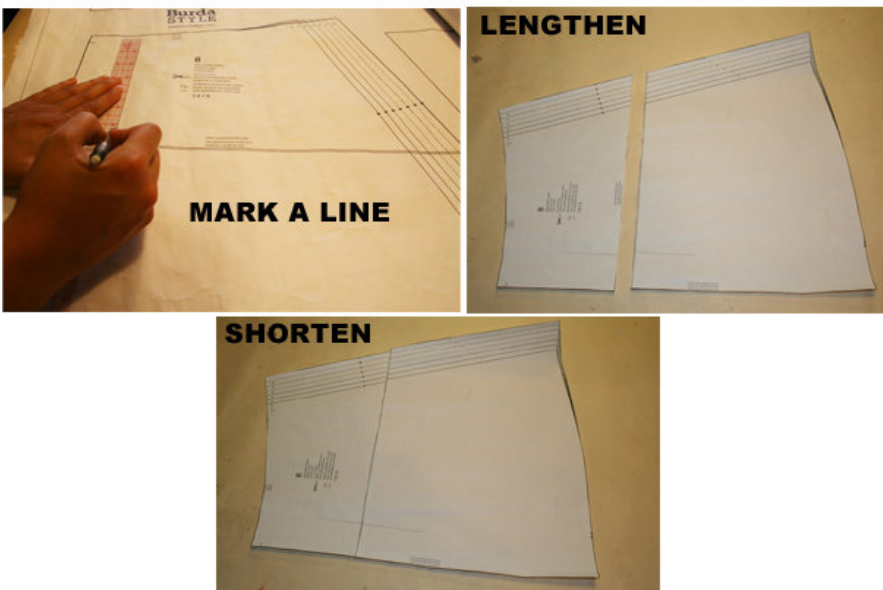
The patterns can be printed out at the copy shop. If you decide to print them at home, follow the instructions: Paper cut for ANSI A (German DIN A4) prints:

The patterns are printed out on 36 sheets with a thin frame. Wait until all sheets are printed out. Arrange the sheets so that they fit together (see additional page with the overview of the prints). Fold the single sheets on the upper and right edge along the thin frame lines. Begin with the left lower sheet and then tape the frame lines together precisely.

Sizes 34 to 44

The buttonholes in part one are depicted for a size 32. For all other sizes, draw the top buttonhole at the same distance from the neckline edge as for a size 32. The bottom buttonhole is at the same spot for all sizes. Mark the other four buttonholes with equal space in between them.

### Step 3



## ADJUST PATTERN SIZES

Select your size according to the Burda-dimension table: dresses, blouses, jackets and coats according to the bust size, trousers and skirts according to the hip width. Change the pattern to fit your measurements if they deviate from the Burda-size chart. Cut out the pattern according to your size.

Refer to our "Adjust patterns for mixed sizes" technique.

## LENGTHENING OR SHORTENING THE PATTERN PIECES

Our pattern is calculated for a height of 5'6" (168 cm). If you are taller or shorter, you can adjust the pattern pieces along the lines marked "lengthen or shorten here". This way the proper fit is maintained.

Always adjust all pattern pieces along the same line to the same degree.

How to lengthen and shorten pattern pieces:

Cut the pattern pieces along the marked lines

To lengthen, slide the two halves of the pattern piece as far apart as necessary.

To shorten, overlap the two halves of the pattern piece as far as necessary. Blend the side edges.

---

## Step 4



## CUTTING OUT

FOLD ( ) means: Cut on the fold, the fold being the center of the pattern piece, but never a cut edge or seam. The piece should be cut double, with the fold line forming the center line. Pattern pieces that are outlined with a broken line in the cutting diagrams are to be placed face down on the fabric. The cutting diagrams on the pattern sheet show how the pattern pieces should be placed on the fabric.

The cutting diagrams show the placement of the pattern on the fabric.

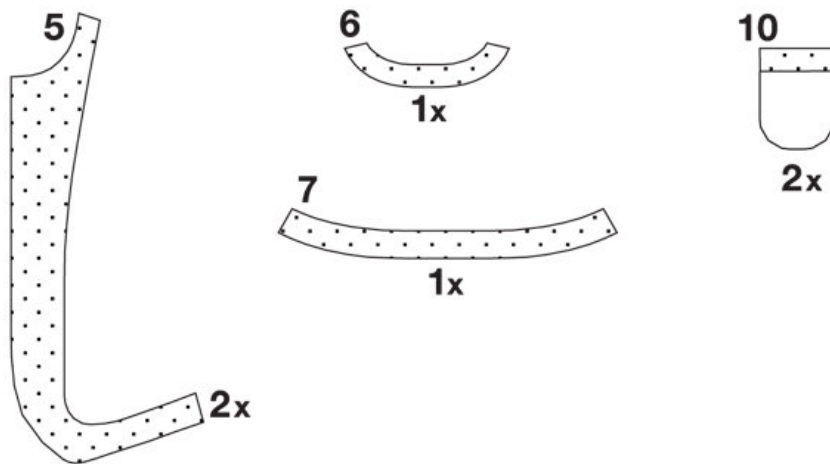
For a single layer of fabric, the pattern pieces are pinned to the right side. For double layers of fabric, the right sides are facing and the pattern pieces are pinned to the wrong side. The pattern pieces that are shown extending over the fold of the fabric in the cutting diagram should be cut last from a single layer of fabric .

Cut part 11 from the leftover lining.

---

## Step 5

### INTERFACING



SEAM AND HEMLINE ALLOWANCES are included on an average:

1 5/8" 8" (4 cm) for hem, 5/8" (1.5 cm) for all edges and stitches. Using BURDA copying paper, transfer the lines and signs of the pattern onto the wrong side of the fabric. Instructions can be found in the packaging.

#### Sewing

While sewing, the right sides of the fabric are facing.

Transfer all lines of the pattern onto the right side of the fabric using basting stitches.

#### Interfacing

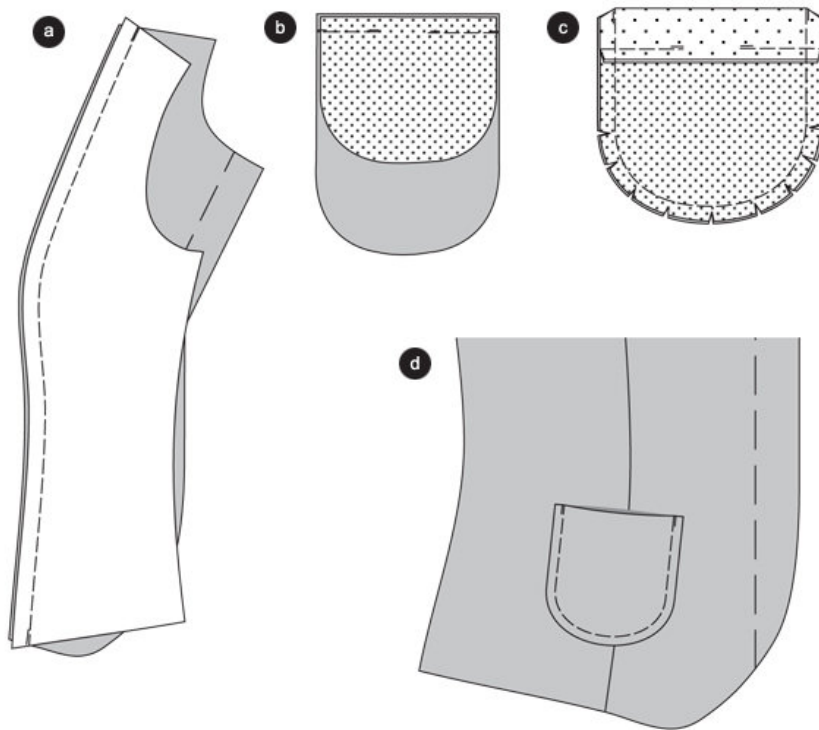
Press the interfacing piece according to the cutting diagram onto the wrong side of the fabric.

#### Jacket

Advice: When sewing with jeans fabric, use contrasting thread.

---

## Step 6



#### Front Princess seams Seams

Place side front pieces right sides facing onto the middle front pieces. Pin Dividing seams (Seam number 1). Stitch. Back Dividing seams are stitched the same way (Seam number 2). Place back pieces right sides facing, pin and stitch back middle seam. Debaste all seam allowances and finish. (a)

#### Pockets

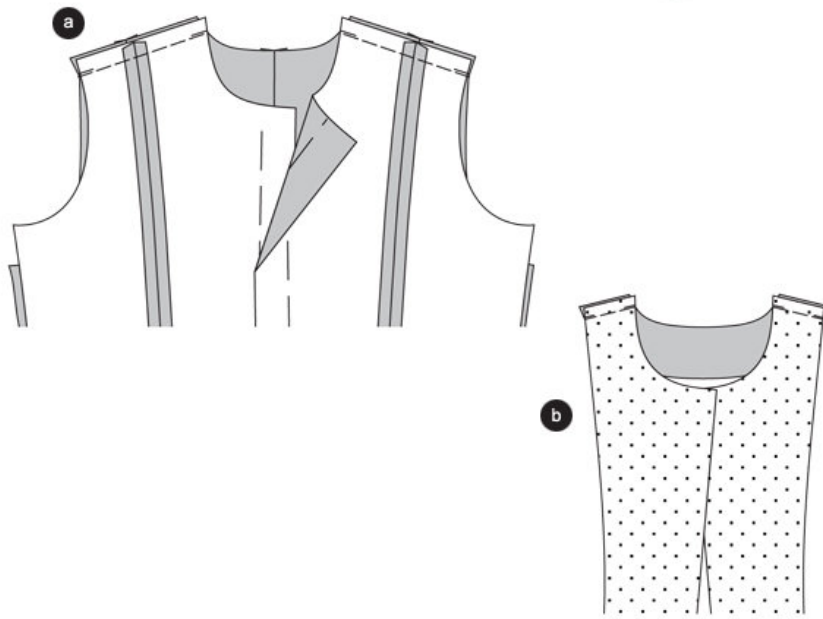
Stitch the lining pocket right sides facing onto the cut trimming, leaving about 5 Cm (2 inches) open for turning. Secure ends of seam. Iron seam allowances into the lining. (b)

Turn cut trimming outside. Stitch the lining pocket and the narrow edges of the trimming onto the pocket. Trim seam allowances, cut diagonally at edges. Cut in at rounded edges. Turn pocket. Pin edges. Iron. Sew open seam by hand. (b)

Pin pockets, attaching them at the base lines, onto the front pieces and stitch, allowing 0.5 cm (1/4 inch). ©

---

## Step 7

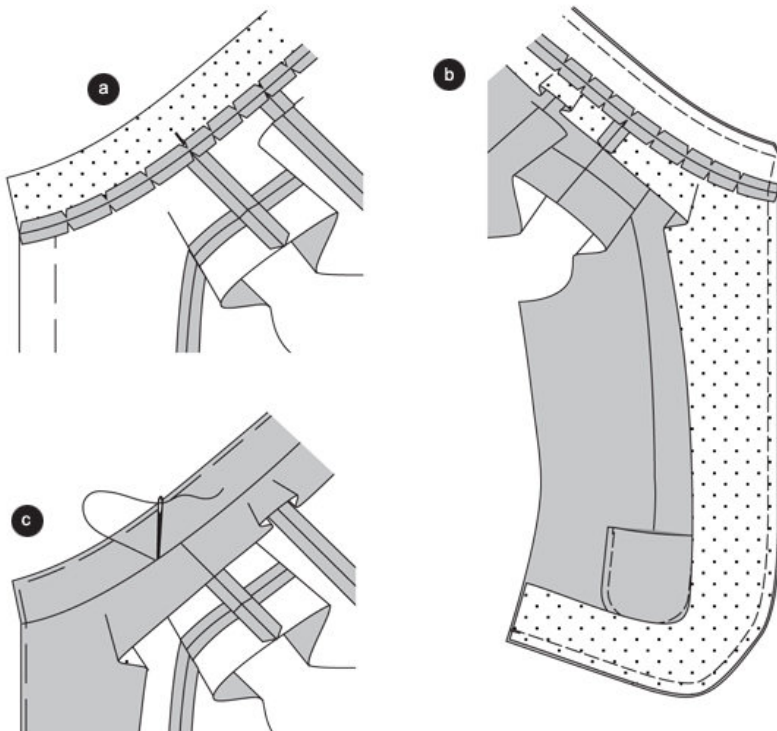


### Shoulder Seams

Place front pieces right sides facing onto the back trimming, pin shoulder seams (Seam Number 3), the dividing seams meet. Stitch. (a)

Place front trimming right sides facing onto the back trimming, stitch shoulder seams (Seam number 4). Trim seam allowances and finish. Debaste inner trimming edge. (b)

## Step 8



### Lapel Collar/ Trimming

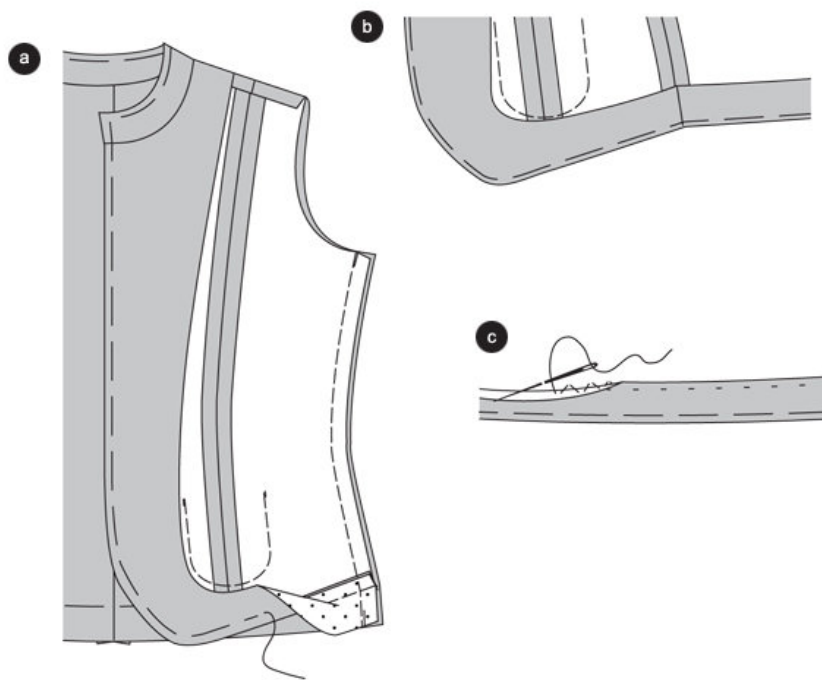
Stitch the lapel collar with the lining right sides facing onto the neck line (Seam Number 5). Stitch the lapel collar without the lining the same way. Trim seam allowances, cut in and finish. (a)

Pin trimmings with collar right sides facing onto the front pieces and the collar. Pin edges onto another (Seam Number 5). Stitch, the collar base seams are meeting. Trim seam allowances, also at collar, and cut diagonally at edges. (b)

Turn collar. Turn trimmings inside. Pin edges, iron. Pin collar base seams onto another, stitch together with reverse stitches. ©

---

## Step 9



### Side Seams

Place the trimmings at the side seams pointing down.

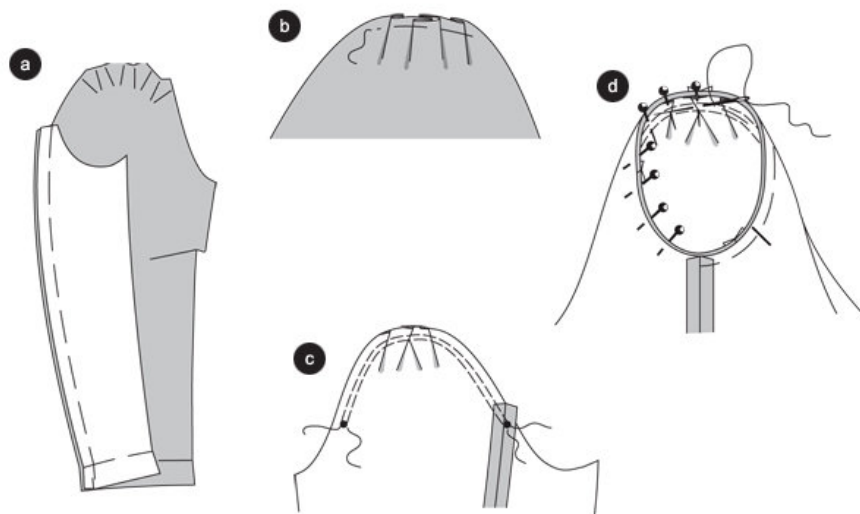
Place front pieces right sides facing onto the back piece, pin side seams (Seam number 6), stitch, continuously stitching the narrow trimming edges onto the back piece. Debaste seam allowances and finish. (a)

### Hem

Debaste hem at the back piece. Turn hem and trimming side. Pin edges. (b) Sew hem and trimmings at seam from hand with loose stitches. ©

---

## Step 10



### Sleeves

Place lower sleeve right sides facing onto the upper sleeve, pin back seam (seam number 7) and stitch. Finish seam allowances. (a)

Lay pleats around the arm base coming from the right fabric side in the direction of the arrow, pin. (b)

To secure the arm base from dot symbol to dot symbol, stitch in two rows close to each other with wide stitches. Fold sleeves lengthwise, stitch front sleeve seams (Seam number 8), finish seam allowances. De-baste sleeve seam, turn inside and stitch, allowing 3 cm. (1 1/2 inches) ©

### Inserting Sleeves

To maintain the shape of the arm base, lightly pull the bobbin thread of the stitching seams.

Place sleeves right side facing onto opening, . When inserting sleeves, 4 spots are important to the fit: The horizontal lines 9 of the upper sleeves and front piece have to meet. The horizontal line of the bottom sleeve has to meet the side seam. The horizontal line of the arm base has to meet the shoulder seam. The width between the dots has to be distributed so that no pleats are created. Pin sleeves coming from the sleeve side and stitch. Iron seam allowances into the sleeves. (d)

---

**BurdaStyle**

Steffi