

Stella

By: burdastyle

<http://www.burdastyle.com/projects/stella>



The Stella jacket is a delicate and chic blazer that can be fabricated for any season. Feminine, form-flattering, and also strong.

Materials

Cotton with stretch for the jacket, printed cotton shirting for the trim.

Step 1

burda Download-Pattern Jacket 7930 - Instructions



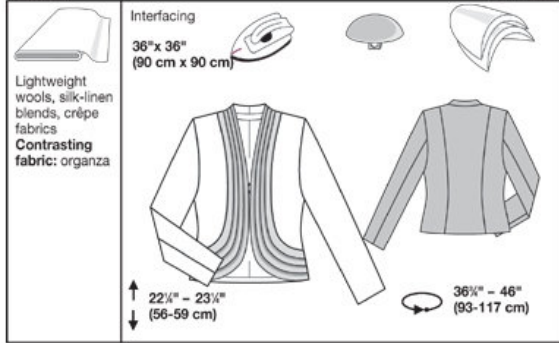
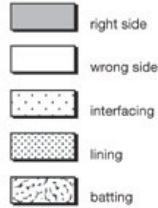
average

fitted

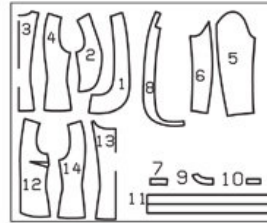
burda sizes	45 ins / 114 cm						55 ins / 140 cm					
	34	36	38	40	42	44	34	36	38	40	42	44
Contrasting fabric	1 1/2	1 1/2	1 1/2	1 1/2	1 1/2	1 1/2	1 1/2	1 1/2	1 1/2	1 1/2	1 1/2	1 1/2
Lining	1 1/2	1 1/2	1 1/2	1 1/2	1 1/2	1 1/2	1 1/2	1 1/2	1 1/2	1 1/2	1 1/2	1 1/2

→ with nap

← without nap



Patternpieces:



JACKET

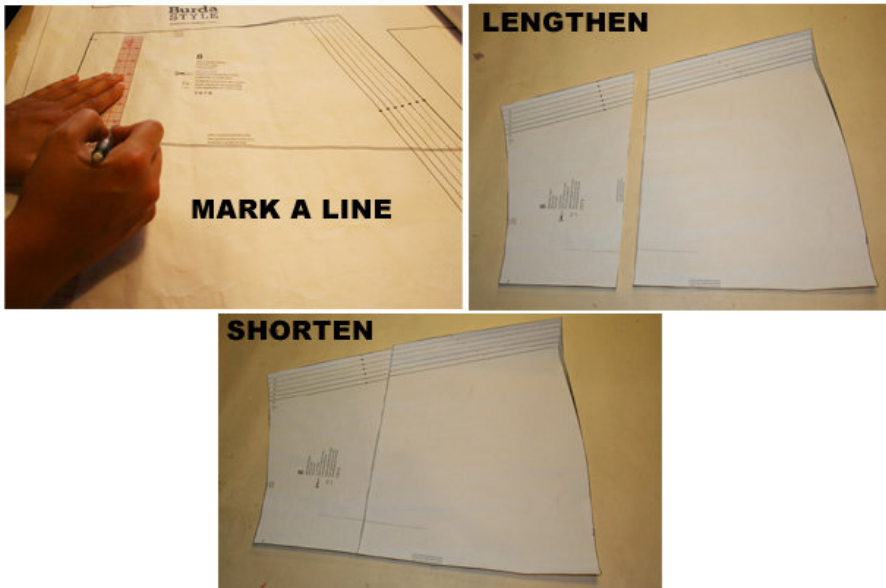
- A 1 Center Front 2x
- A 2 Side Front 2x
- A 3 Center Back 1x
- A 4 Side Back 2x
- A 5 Upper Sleeve 2x
- A 6 Undersleeve 2x
- A 7 Back Collar 1x
- A 8 Front Facing 2x
- A 9 Back Facing 1x
- A 10 Loop 1x
- A 11 Band 8x
- Lining Pieces:
- A 12 Front 2x
- A 13 Center Back 1x
- A 14 Side Back 2x

Step 2



The patterns can be printed out at the copy shop. If you decide to print them at home, follow the instructions: Paper cut for ANSI A (German DIN A4) prints: The patterns are printed out on 28 sheets with a thin frame. Wait until all sheets are printed out. Arrange the sheets so that they fit together (see additional page with the overview of the prints). Fold the single sheets on the upper and right edge along the thin frame lines. Begin with the left lower sheet and then tape the frame lines together precisely.

Step 3



ADJUST PATTERN SIZES

Select your size according to the Burda-dimension table: dresses, blouses, jackets and coats according to the bust size, trousers and skirts according to the hip width. Change the pattern to fit your measurements if they deviate from the Burda-size chart. Cut out the pattern according to your size. Refer to our "Adjust patterns for mixed sizes" technique

LENGTHENING OR SHORTENING THE PATTERN PIECES

Our pattern is calculated for a height of 5â€ 6â€ (168 cm). If you are taller or shorter, you can adjust the pattern pieces along the lines marked “lengthen or shorten here”. This way the proper fit is maintained.

Always adjust all pattern pieces along the same line to the same degree.

The band joining lines on piece 1 are marked for size 8 (34). For the other sizes, just lengthen the front joining line to the shoulder. Mark the other two lines evenly spaced between the panel seam and front joining line.

How to lengthen and shorten pattern pieces:

Cut the pattern pieces along the marked lines

To lengthen, slide the two halves of the pattern piece as far apart as necessary.

To shorten, overlap the two halves of the pattern piece as far as necessary. Blend the side edges.

Step 4



CUTTING OUT

FOLD () means: Cut on the fold, the fold being the center of the pattern piece, but never a cut edge or seam. The piece should be cut double, with the fold line forming the center line. Pattern pieces that are outlined with a broken line in the cutting diagrams are to be placed face down on the fabric. The cutting diagrams on the pattern sheet show how the pattern pieces should be placed on the fabric.

The cutting diagrams show the placement of the pattern on the fabric.

For a single layer of fabric, the pattern pieces are pinned to the right side. For double layers of fabric, the right sides are facing and the pattern pieces are pinned to the wrong side. The pattern pieces that are shown extending over the fold of the fabric in the cutting diagram should be cut last from a single layer of fabric .

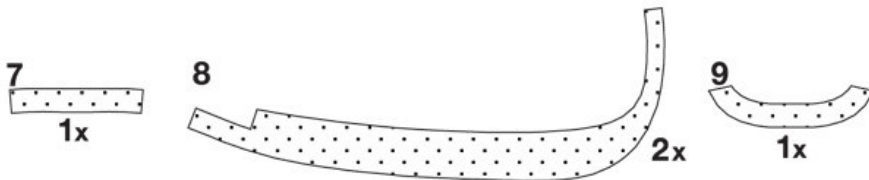
CONTRASTING FABRIC

Cut piece 11 of contrasting fabric.

_ See cutting diagrams on pattern sheet.

Step 5

INTERFACING



SEAM AND HEMLINE ALLOWANCES are included on an average:

1 5/8" - 8" (4 cm) for hem, 5/8" (1.5 cm) for all edges and stitches. Using BURDA copying paper, transfer the lines and signs of the pattern onto the wrong side of the fabric. Instructions can be found in the packaging.

INTERFACING

Cut interfacing as illustrated and iron on the wrong side of the fabric pieces. Also iron 1 5/8" - 8" (4 cm) strips of interfacing on hem allowance of back and sleeve pieces.

LINING

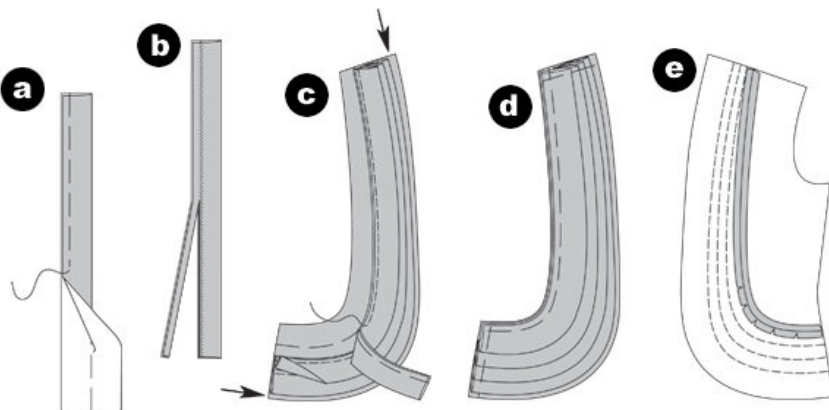
Use pieces 5, 6 and 12, 13 and 14 to cut lining.

Sewing

While sewing, the right sides of the fabric are facing.

Transfer all lines of the pattern onto the right side of the fabric using basting stitches.

Step 6



JACKET

Bands / Organza

Fold bands on FOLD LINE, wrong side facing in. Press. Baste open edges together. Trim allowances on six bands for a finished width of 1 5/8" (4 cm). Neaten edges together.(a)

Tip: If you do not have a serger, zigzag stitch the open edges together 5/8" (1.5 cm) wide. Then trim allowances close to stitching (b).

Please note: The given pattern piece is for the longest (outer) band. Trim the others to the required length.

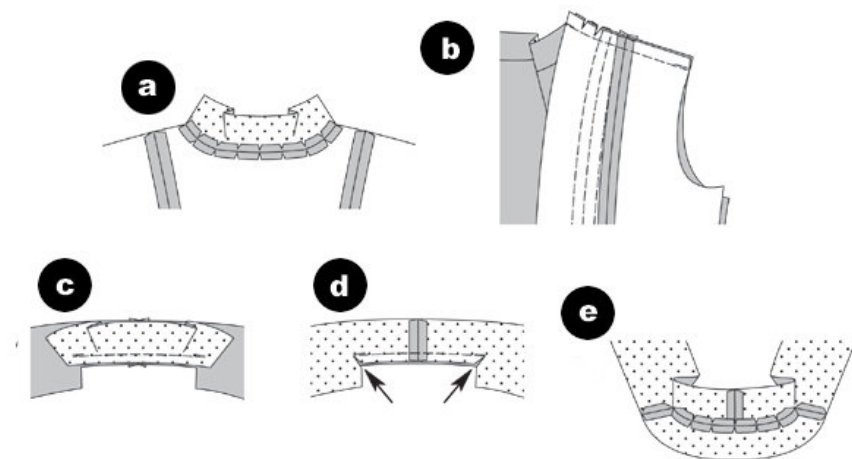
Baste three bands each on fronts at joining lines, beginning on the outer line. Ease in band slightly along the curve. Press fold edge to shape, stretching slightly. Allowance at front edges overhangs (arrows). ©

Baste the fourth band on each side edge. Baste short edges on allowances shoulder seams and side seams. (d)

Panel Seams

Lay side fronts right sides together with center fronts. Baste panel seams (seam number 1) and stitch. Stitch back panel seams likewise (seam number 3). Trim allowances of seams, clip curves and press open. (e)

Step 7



Back Collar

Baste collar right sides together with back neck edge (seam number 2). Stitch. Trim allowances, clip curves and press open. (a)

Shoulder Seams

Lay fronts right sides together with back. Baste shoulder seams (seam number 4), matching panel seams. Stitch. Trim allowances, clip curves and press open. (b)

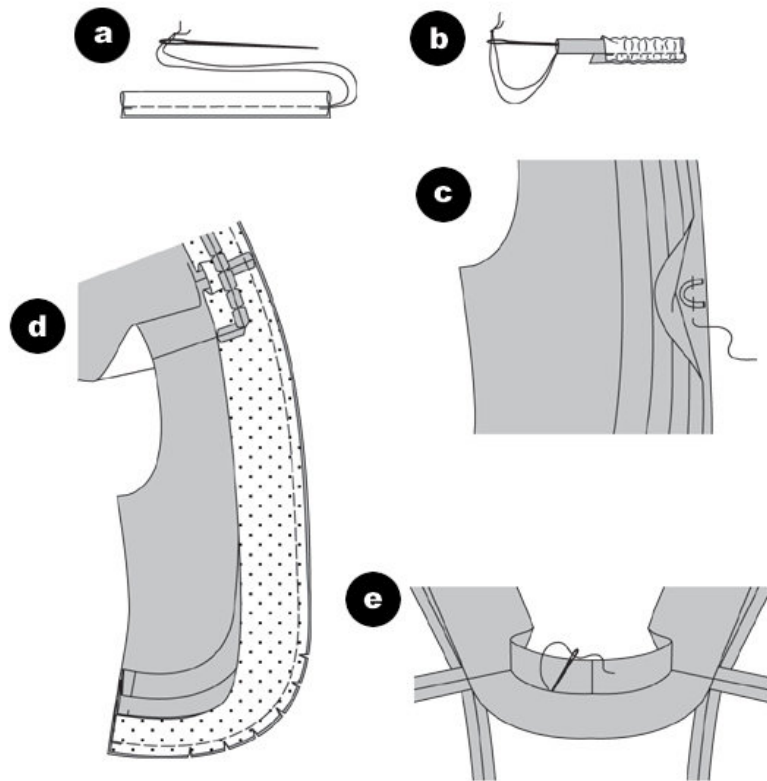
Facings

Lay front facings right sides together. Stitch center back seam. Press allowances press open.

Pin back facing right sides together with neck edge of front facings and stitch between corners. ©

Clip front facings in corners close to stitching (arrows). Stitch shoulder edges of facings together (seam number 5). (d) Trim allowances, clip curves and press open (e).

Step 8



Loop

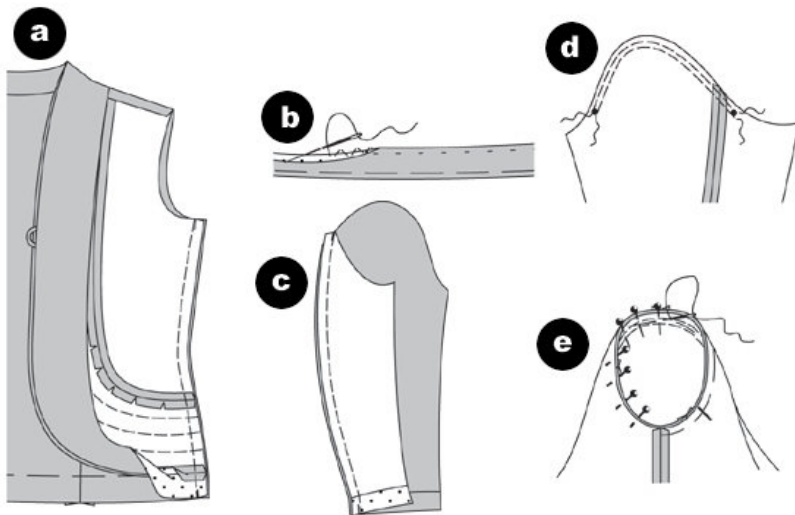
Fold strip lengthwise, right side facing in. Stitch 1/4" (0.7 cm) next to fold edge. Trim allowances. Leave a length of thread hanging. Insert into a darning needle and knot securely. (a) Push needle eye first through fabric to turn right side out (b). Form a loop; baste on right front as marked. Adjust size of loop to fit your button ©.

Place facing, right side to right side, onto collar and front piece. Pin edges together and sew. (d)

ATTENTION: Do not sew strips! Trim seam allowance and perforate with tiny cuts along rounded edges. Turn facing inward. Pin edges and press.

Pin collar joining seams together and stitch together from the wrong side with back stitches by hand. (e)

Step 9



Side Seams

Lay facing at side edges downward, press allowances open. Lay fronts on back, right side facing in. Baste side seams (seam number 6), match facing seam with hemline in back. Stitch. Press seam allowances open. (a)

Turn facing and hem to inside, baste and press. Stitch hem loosely by hand. (b)

Sleeves

Lay undersleeve piece right sides together with top sleeve piece. Baste back seam (seam number 7) and stitch. Press seam allowances open. ©

To ease tops of sleeves, stitch two closely spaced lines of machine basting (longest stitch setting) from _ to _. Fold sleeves lengthwise, right side facing in. Stitch front sleeve seams (seam number 8). Press seam allowances open. Stitch sleeve hem. (d)

Setting in sleeves

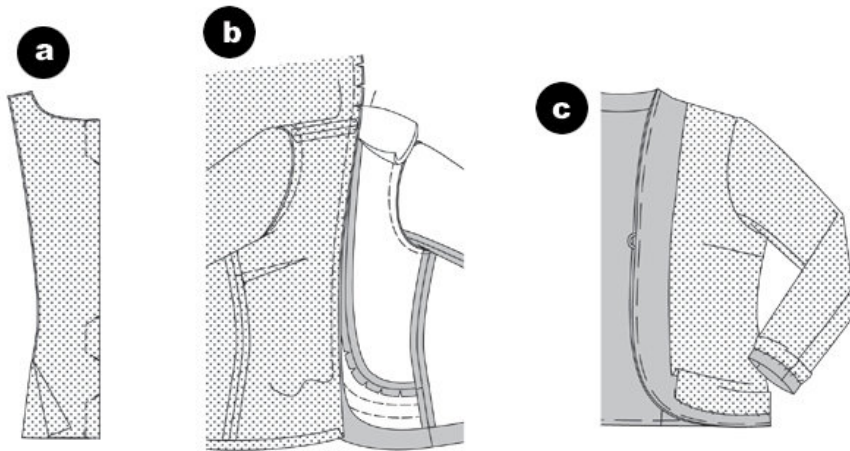
To ease tops of sleeves, pull bobbin threads slightly.

Pin sleeve into armhole, right sides facing. When setting in sleeves, 4 points are important for proper fit: _ Match markings 9 on upper sleeve and front. Match marking on undersleeve with side seam. Match marking at top of sleeve with shoulder seam. (e)

Distribute fullness evenly between the _â€ s to avoid forming tucks. Baste and stitch sleeve from sleeve side.

Press seam allowances into sleeves. Try on jacket. Insert SHOULDER PADS, pin in place and sew on at seam allowances of shoulder seams.

Step 10



Lining / Ease Pleat

Fold center back lengthwise, right side facing in. Stitch on marked lines for ease pleat. Press pleat to one side. Stitch darts and seams on lining, matching same seam numbers. Set sleeves into lining. Press allowances at lower edge of lining and sleeve linings to inside. (a)

Pin lining right sides together with facing, matching shoulder seams. Stitch, beginning and ending about 4" (10 cm) above hem edge. Clip lining at back neck edge. Press seam allowances onto lining. Pin lining inside jacket with wrong sides facing. (b)

Fold the lower lining edge inside and pin it onto the hemline allowance. Stitch the lining onto both sleeves. Stitch the front bottom edges/hemline edges from facing end. ©

BurdaStyle

Stella