

4/2010 V-neck dress

By: burda style magazine

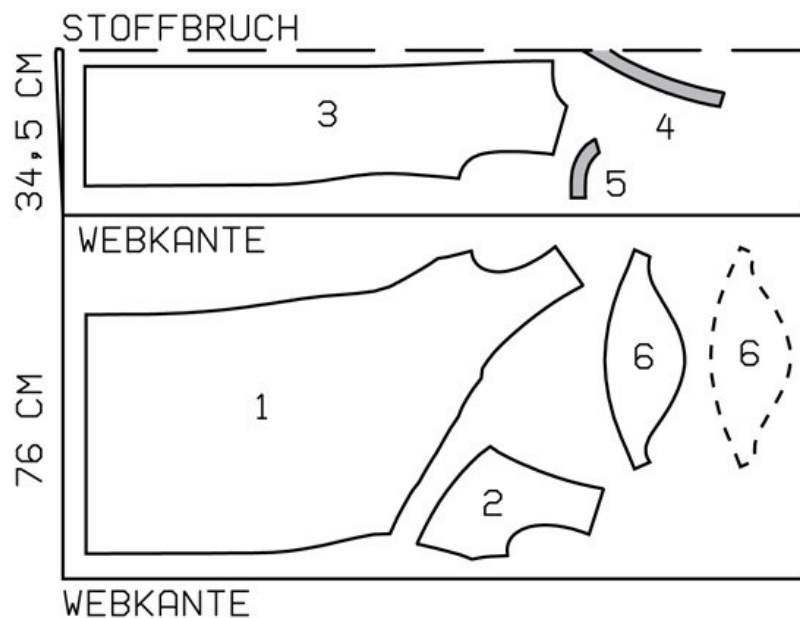
<http://www.burdastyle.com/projects/42010-v-neck-dress>

V-neck dress burda style magazine patterns FAQ

Materials

Crosswise stretch poplin

Step 1 — Preparation



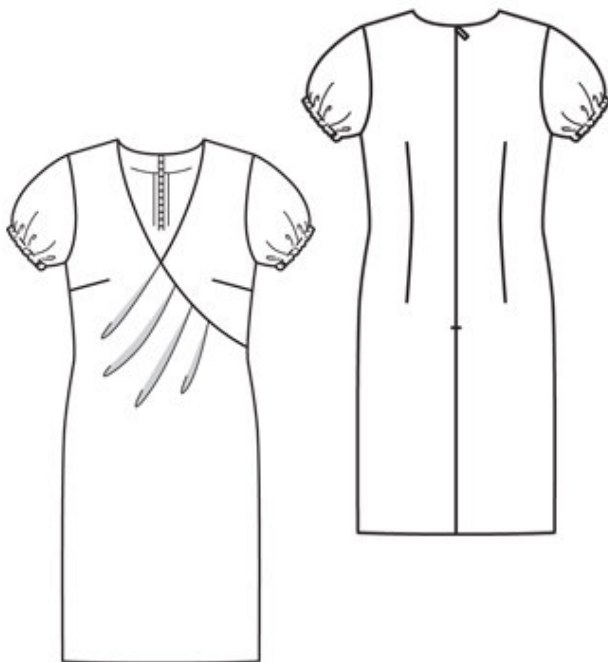
108 38-46

Trace the pattern pieces from the pattern sheet. Glue pieces 1 and 1a together on the joining lines. The pleat arrows on piece 1 are mark-ed for size 38. Mark the pleat arrows for the other sizes according to the size lines.

Seam and hem allowances:

Seams and edges 1.5 cm (5/8 in), hem 4 cm (1 1/2 ins), sleeve hems 2 cm (3/4 in).

Step 2 — Cutting out



1 front 1x

2 upper left front 1x

3 back 2x

4 front neck facing, on a fold 1x

5 back neck facing 2x

6 sleeve 2x

Interfacing: Iron onto facing pieces.

Step 3 — Darts

Stitch darts. Press bust darts down.

Press back darts toward centre back. Fold pleats in front in arrow direction and baste.

Step 4 — Fronts

Stitch upper left front to front, exactly from centre front. Press seam allowances up.

Step 5 — Zipper

Sew invisible zip to back opening edges. Stitch centre back seam from lower edge to zip.

Step 6 — Side seams, shoulder seams, facing seams

Stitch side seams, shoulder seams and facing seams. Press seam allowances open.

Step 7 — Neck edge

Pin facing right sides together with neck edge of dress. Turn facing at zip opening back, about 5 mm (3/16 in) before edge of opening, and pin to upper edge. Lay allowances on opening edges of dress outward and pin to neck edge, over facing. Stitch along neck edge. Trim seam allowances and clip into point of neck edge. Turn allowances at edges of opening to inside. Lay -facing up and stitch to seam allowances, as far as possible, close to seam. Turn facing to inside and sew to zip tapes and to shoulder seams.

Step 8 — Sleeves

Stitch sleeve seams, leaving seam open below hem line to insert elastic. Press sleeve hem allowances to inside, turn in, and stitch 1 cm (3/8 in) from edge, to form elastic casing. Insert elastic. Stitch ends of each elastic together for a circumference of 30 — 31 — 32 — 33 — 34 cm (12 — 12 1/4 — 12 3/4 — 13 — 13 1/2 ins).

Step 9 — Sleeve caps

Set in sleeves, easing sleeve caps

Step 10 — Hem

Press hem allowance to inside and sew in place by hand.

Step 11 — Note

For the beaded and sequined embroidery on the neck edge, we used costume jewellery necklaces (Bijou Brigitte). Take the necklaces apart and sew the beads and sequins to the front neck edge, following the print of the fabric or as desired.

BurdaStyle

4/2010 V-neck dress