

Gail

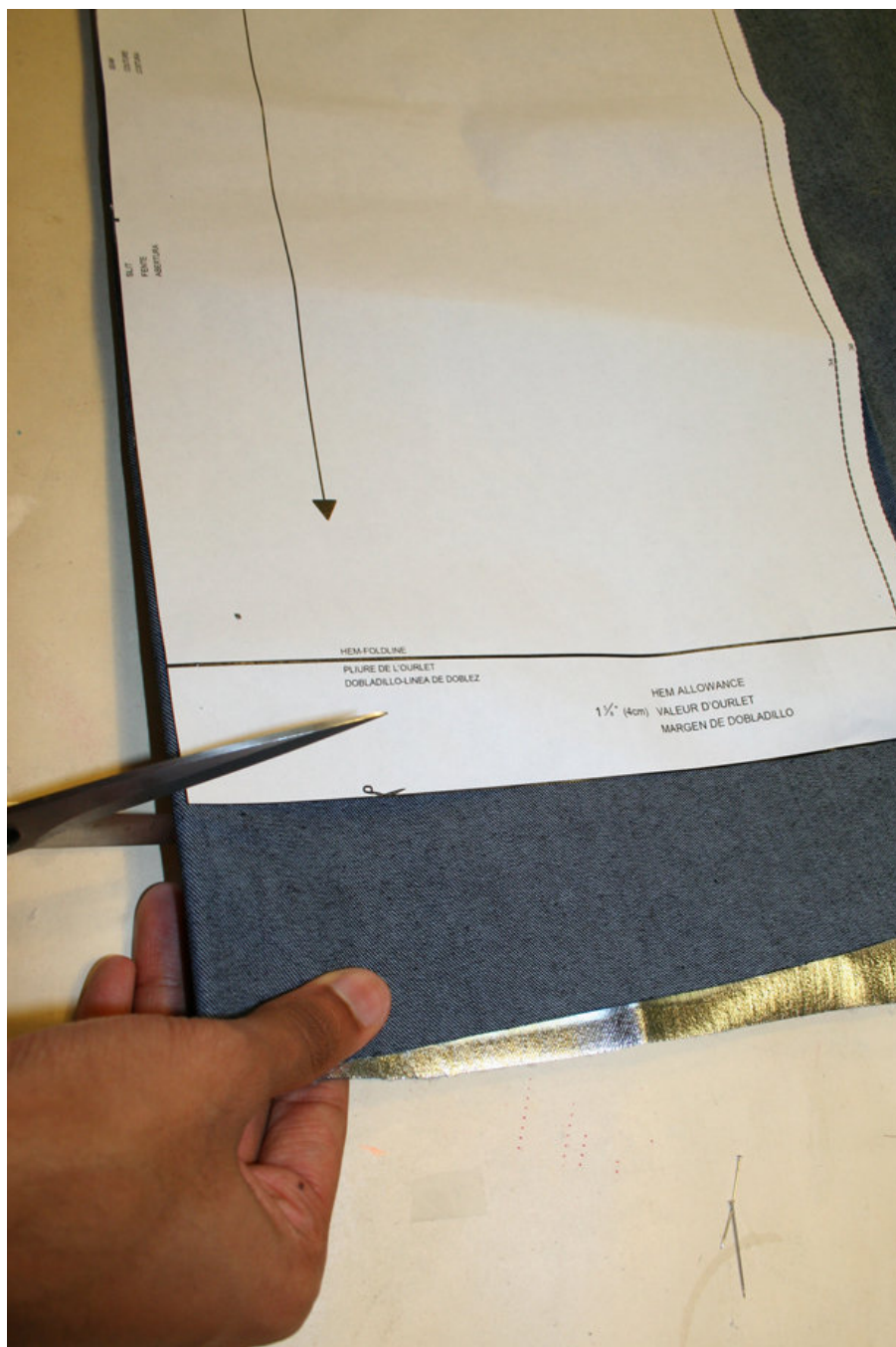
By: burdastyle

<http://www.burdastyle.com/projects/gail>



Gail is a more fitted version of the original Malissa pattern, however, you do not need the Malissa pattern to create the Gail. For the glitzy set in we used a Guipure, but you can be as creative as you want here. Instead of Guipure just use any kind of lace or sheer material. Also, instead of making a full inset, you can add a

Step 4



Prepare invisible zipper to proper length (measure on pattern). Cut out pattern pieces: the Front, Back, and Facing are the self fabrics, the lace is for the top inset. The Front and Facing are cut on the fold. Put fusible on the wrong side of the facing. Cut bias strips.

Step 5

Right sides facing, sew center back seam below the zipper notch. Press. Insert invisible zipper using a zipper foot.

Right sides facing, sew side seams of Front and Back pieces and Front and Back Facings.

Step 6

The size and number of your buttons will determine the number and length of the button loops: your button loops should be the diameter of your buttons plus 3/4". The 3/4" includes ease and seam allowance. Cut a strip of fabric on the straight grain about 1" wide and 11" long. Fold strip longways with right sides facing; stitch at 1/4". Turn strip right side out using a loop turner or safety pin, and cut the correct number of strips the proper length.

Step 7

Trim seam allowance to 1/4" at center back and around the neck (cut away 3/8"). Evenly space button loops, position, and pin on the left center back. For some types of lace, you can: Pin bias, right sides facing, from left center back, around neckline, and down right center back. Stitch at 1/4". Fold bias over raw edge, fold under again, and, from the right side, stitch in the ditch, catching the under side of bias. Repeat for armholes (between 'A' marks). If you are using guipure, you have to hand stitch the casing. You can look at our step-by-step instructions in our techniques section for finishing Guipure lace (see link).

Step 8

Right sides facing, baste the lace inset to the front and back pieces. Finish the bottom edge of the facing. With wrong side up, right side toward yoke, pin the facing to yoke and dress. Sew, and press the seam allowances all together down into the dress. Understitch the seam allowances to the facing, 1/4" from the seam line, all around the facing.

Next, all you have to do is finish the hem, and attach your buttons carefully matching up with the loops. Voila, now you have your very own Gail dress!

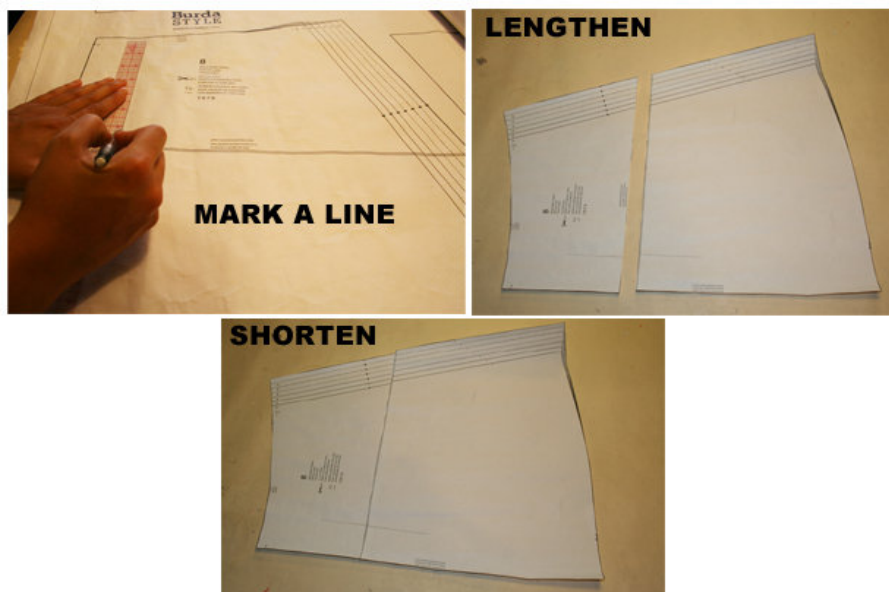
Step 2



The pattern is a print at home pattern.

Paper cut for ANSI A (German DIN A4) prints: The patterns are printed out on 40 sheets with a thin frame. Wait until all sheets are printed out. Arrange the sheets so that they fit together (see extra page with the overview of the prints). Cut off the single sheets on the upper and right edge along the thin frame lines. Begin with the left lower sheet and then glue the parts in the frame lines together precisely.

Step 3



ADJUST PATTERN SIZES

Select your size according to the Burda-dimension table: Dresses, blouses, jackets and coats according to the bust size, trousers and skirts according to the hip width. Change the pattern if necessary, to fit your measurements if they deviate from the Burda-dimension table.

Cut out the pattern according to your size.

Refer to our 'Adjust patterns for mixed sizes' technique

LENGTHENING OR SHORTENING THE PATTERN PIECES ACCORDING TO YOUR SIZE Our pattern is calculated for a height of 5' 6" (168 cm). If you are taller or shorter, you may adjust the pattern to fit your size. Choose your size at the lines marked "lengthen or shorten here". Thus the proper fit is preserved. Make sure that you adjust all pieces of one pattern by the same amount at the same lines.

How to lengthen and shorten pattern pieces: Cut the pattern pieces along the marked lines.

To lengthen, slide the two halves of the pattern piece as far apart as necessary.

To shorten, overlap the two halves of the pattern piece as far as necessary. Even out the side edges.

BurdaStyle

Gail