

Mila

By: burdastyle

<http://www.burdastyle.com/projects/mila>



This dress comes from our very own and very talented MilasFashion The was part of BurdaStyle's Open Call for Designers back in late November. MilasFashion's design certainly fit the bill for the summer in the city theme. Congrats MilasFashion!

Materials

cotton, silk charmeuse

Step 1

burda Download-Pattern Dress 6023 – Instructions

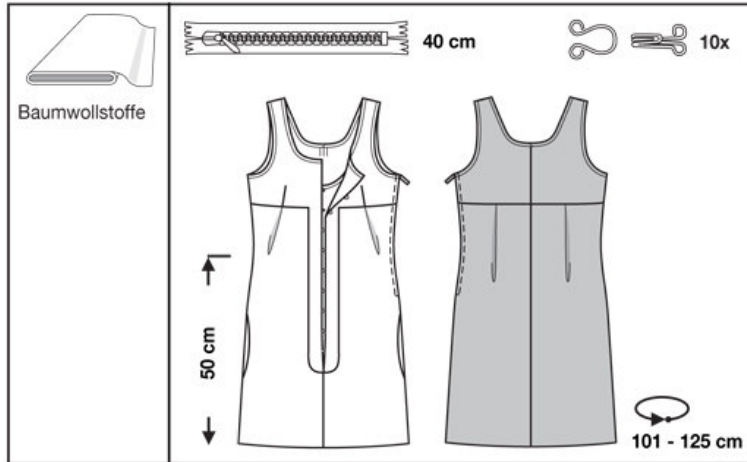


average

fitted

burda sizes		55 ins / 140 cm						
		34	36	38	40	42	44	46
	yds	1 ¹ / ₈	1 ¹ / ₈	1 ¹ / ₈	2 ¹ / ₄	2 ¹ / ₄	2 ¹ / ₄	2 ¹ / ₄
	m	1.70	1.70	1.70	1.95	1.95	1.95	1.95
		→	→	→	→	→	→	→

→ with nap



PATTERN

- 1 Front piece (outer) 2x
- 2 Front piece (inner) 1x
- 3 Front skirt panel 2x
- 4 Facing (front piece) 2x
- 5 Back piece 2x
- 6 Back skirt panel 2x
- 7 Pocket pouch 4x
- 8 Bias strips â' armhole 2x
- 9 Bias strips â' neckline 3x

Fabrics: Cotton fabrics

Step 2



The patterns can be printed out at the copy shop. If you decide to print them at home, follow the instructions: Paper cut for ANSI A (German DIN A4) prints:
 The patterns are printed out on 28 sheets with a thin frame. Wait until all sheets are printed out. Arrange the sheets so that they fit together (see additional page with the overview of the prints). Fold the single sheets on the upper and right edge along the thin frame lines. Begin with the left lower sheet and then tape the frame lines together precisely.

Step 3



ADJUST PATTERN SIZES

Select your size according to the Burda-dimension table: dresses, blouses, jackets and coats according to the bust size, trousers and skirts according to the hip width. Change the pattern to fit your measurements if they deviate from the Burda-size chart. Cut out the pattern according to your size
 Refer to our 'Adjust patterns for mixed sizes' technique.

LENGTHENING OR SHORTENING THE PATTERN PIECES

Our pattern is calculated for a height of 5â€™ 6â€™ (168 cm). If you are taller or shorter, you can adjust the pattern pieces along the lines marked “lengthen or shorten here”. This way the proper fit is maintained. Always adjust all pattern pieces along the same line to the same degree.

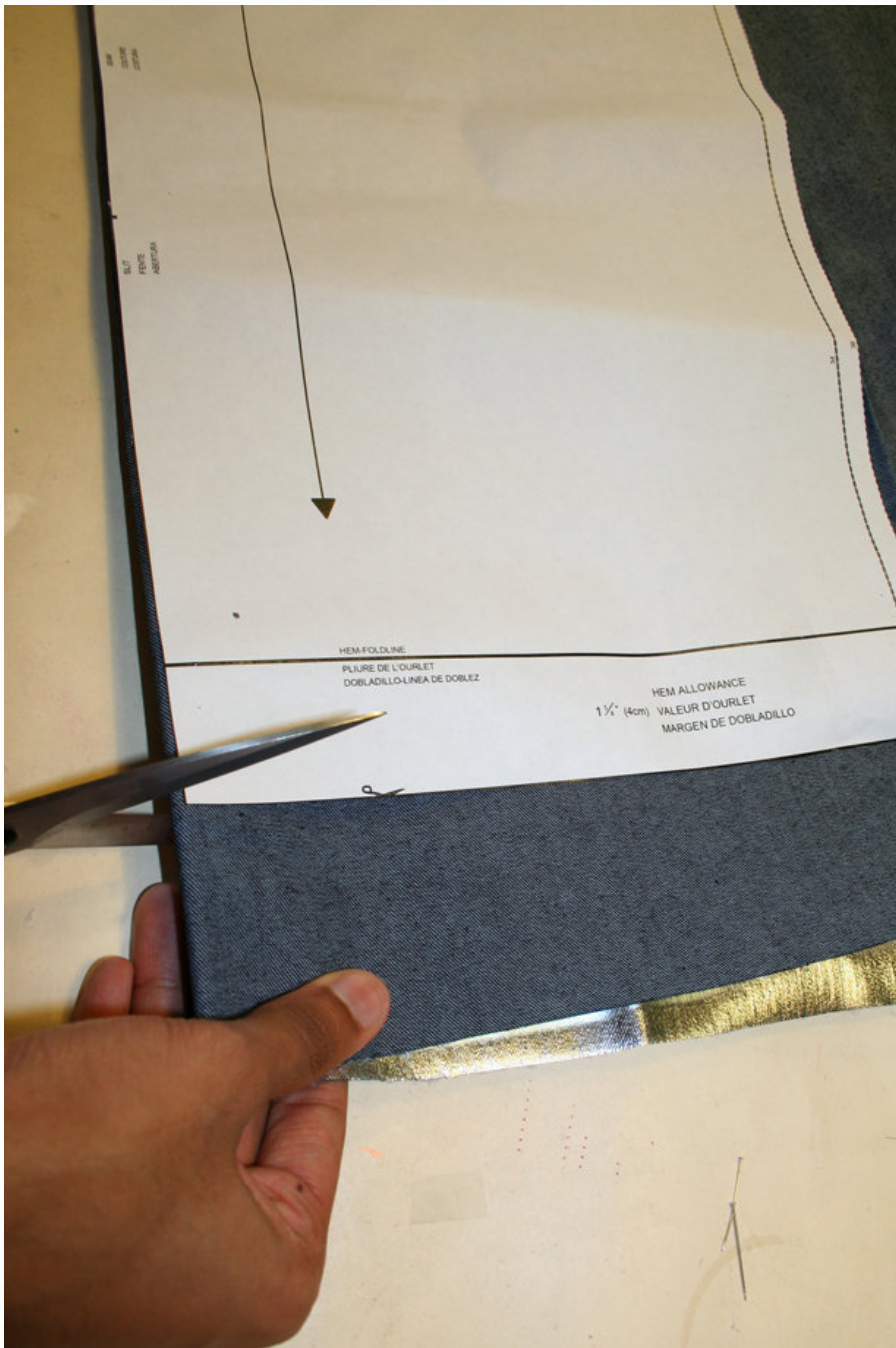
How to lengthen and shorten pattern pieces:

Cut the pattern pieces along the marked lines

To lengthen, slide the two halves of the pattern piece as far apart as necessary.

To shorten, overlap the two halves of the pattern piece as far as necessary. Blend the side edges.

Step 4



CUTTING OUT

FOLD () means: Cut on the fold, the fold being the center of the pattern piece, but never a cut edge or seam. The piece should be cut double, with the fold line forming the center line. Pattern pieces that are outlined with a broken line in the cutting diagrams are to be placed face down on the fabric. The cutting diagrams on the pattern sheet show how the pattern pieces should be placed on the fabric.

The cutting diagrams show the placement of the pattern on the fabric.

Fabric I, fabric II and tulle.

For a single layer of fabric, the pattern pieces are pinned to the right side. For double layers of fabric, the right sides are facing and the pattern pieces are pinned to the wrong side. The pattern pieces that are shown extending over the fold of the fabric in the cutting diagram should be cut last from a single layer of fabric.

Step 5

SEAM AND HEMLINE ALLOWANCES are included on an average:

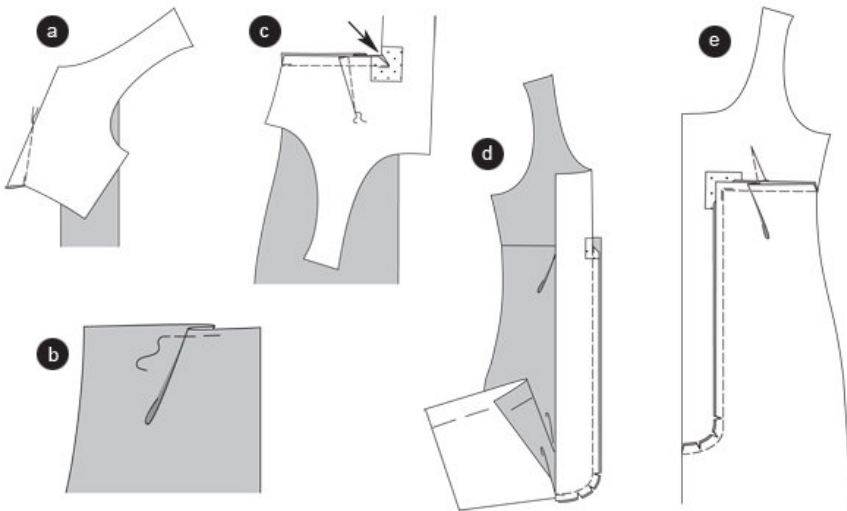
5/8" (1.5 cm) for all edges and stitches. Using BURDA copying paper, transfer the lines and signs of the pattern onto the wrong side of the fabric. Instructions can be found in the packaging.

Sewing

While sewing, the right sides of the fabric are facing.

Transfer all lines of the pattern onto the right side of the fabric using basting stitches.

Step 6



Front pieces

Darts

Pin the darts on the front piece and stitch to a point. Knot thread ends. Press the darts to the side (a).

Front skirt panels

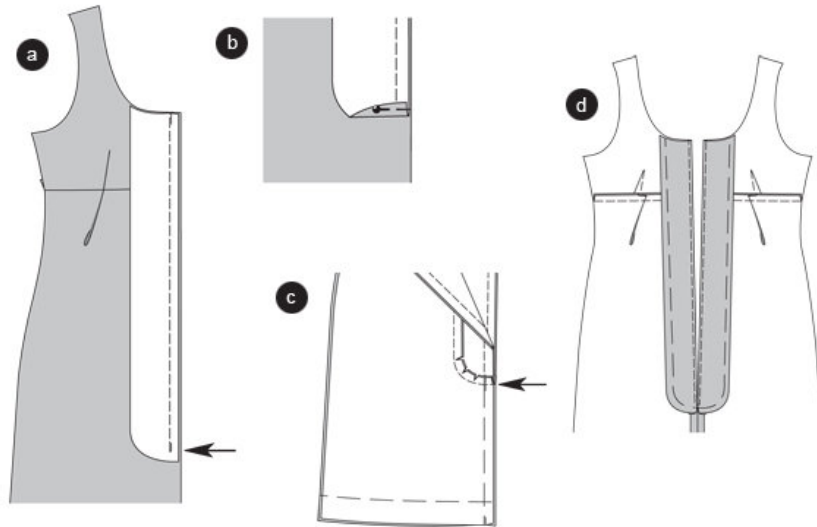
Bring the pleats along the front skirt panels in position according to the arrows; pin on top (b).

Front pieces / front skirt panels

Note: If using light fabrics press a little piece of interlining as support on the corner of the front piece.

Pin the front piece on the front skirt panel from seam 1 to the corner, right sides facing, then stitch. Snip in the allowance corner (arrow). Press the allowances to the top ©. Fold the placket down and stitch on the front skirt panel from the corner to seam 3. Trim allowances, snip in the curve (d). Fold the placket to the front and press the allowances inside the placket (e).

Step 7



Facings / front pieces

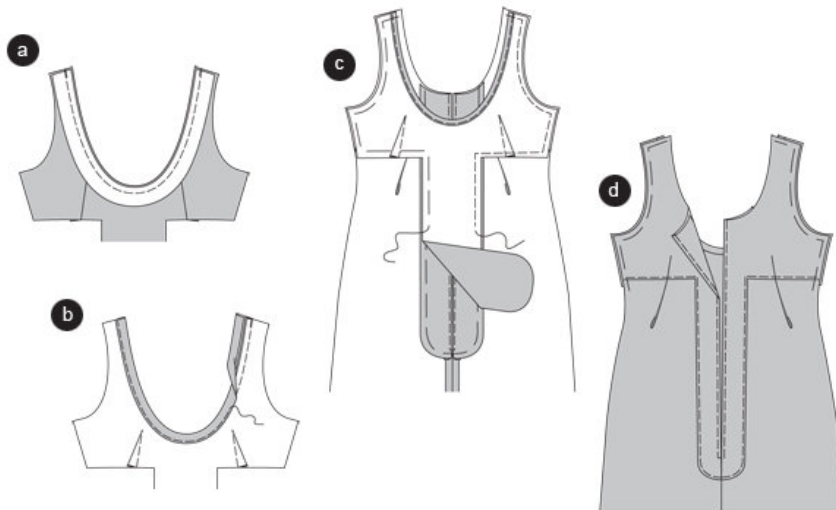
Neaten the facings along the rounded vertical edge. Position the facings on the plackets of the front piece (seam 2), right sides facing. Pin the front edges together and stitch, thereby ending at the placket seam (arrow). Secure seam ends. Trim the allowances of the front edges (a). Fold the allowances of the bottom placket edge to the top and pin (b).

Center front seam

Position the front skirt panels together, right sides facing. Stitch the center front seam from the placket seam (arrow) to the bottom. Secure seam ends. Trim seam allowances and press apart ©.

Fold the facing inside and pin, then press. Stitch the front edges narrowly. Pin the inner facing edge on the seam (d).

Step 8



Inner front piece

Stitch the darts at the inner front piece according to the text and drawing 1. Neaten the front piece edges at the bottom and the rounded placket edges.

Edge neckline with bias strips

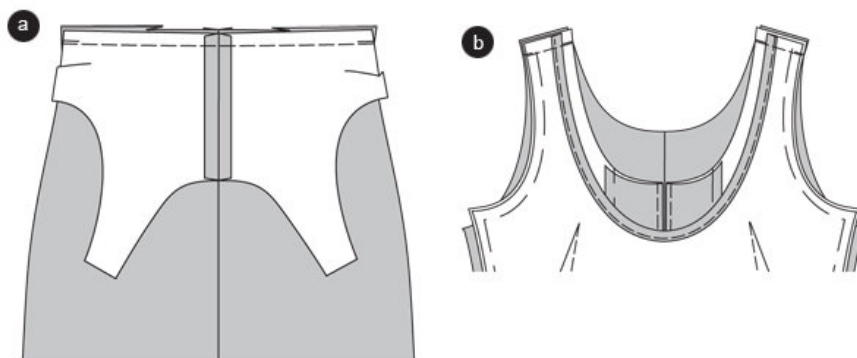
Pin the bias strips on the neckline edge of the inner front piece, right sides facing. Stitch \hat{a} (0.7 cm) wide. Press the strip over the seam to the top, then fold over the edge to the inside (a). Turn bias strip and pin it onto the seam so that it overlaps. Stitch onto the right fabric side, thereby catching the bias strip (b).

Stitch front pieces together

Position the dress front piece, folded inside out, on the table. The front edges meet. Position the inner front piece on top, so that its right fabric side faces the wrong side of the lower piece. The edges meet. The neckline ends at the cross line. Pin the pieces together along the outer edges and the seam lines ©.

Turn the front piece. Topstitch the bottom edge of the front piece and the facing narrowly along the seam line, thereby catching the inner edges (d).

Step 9



Center back seams

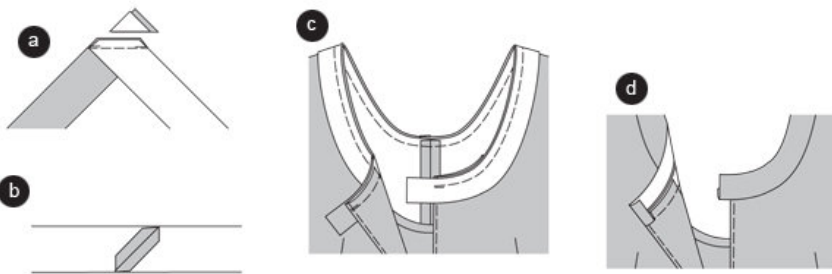
Position the back pieces and back skirt panels together, right sides facing. Pin the center seams and stitch. Neaten seam allowances and press apart. Along the back skirt panel bring the pleats into position.

Position the back piece on the back skirt panel (seam 4), right sides facing. The center seams meet. Stitch the cross line. Trim allowances, neaten and press inside the back piece. Topstitch the seam line narrowly (a)

Shoulder seams

Position the front piece on the back piece, right sides facing. Stitch shoulder seams (seam 6). Neaten allowances and press inside the back piece (b).

Step 10



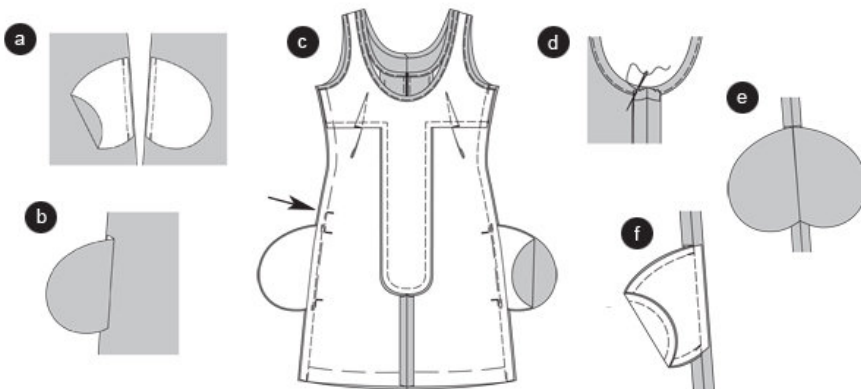
Edge neckline

Position the bias strips together according to the drawing, right sides facing (right-angled) (a). Stitch the seam from corner to corner (straight thread grain). Trim allowances and press apart (b).

Pin the bias strips on the neckline, right sides facing. The seam of the bias strips is positioned above the center back seam. Allow the ends of the front edges to overlap. Stitch the strip \hat{a} (0.7 cm) wide ©.

Flip the strips over the seam and press. Trim the front strip ends to \hat{a} (1 cm) to fold the front edge inside. Border the edge. Sew the front ends of the edge by hand. Border armholes (d).

Step 11



Side seams / pouch seams

Pin the pocket pouches on the front and back skirt panels, the cross lines meet. Stitch. Secure seam ends (a).

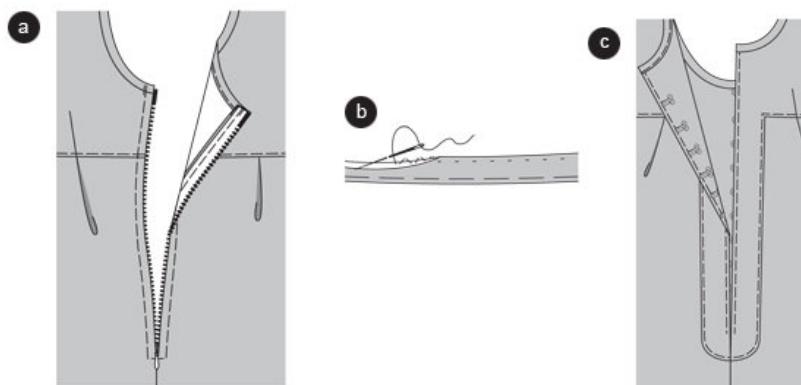
Fold the pocket pouches over the edge seams and press (b).

Position the front piece on the back piece, right sides facing. Pin side seams (seam 5). Stitch, starting at the opening sign for the zipper (arrow) on the left side ©; and for both seams leave the spaces between the cross lines meant for the pocket openings open and do NOT stitch. Leave it pinned. Secure seam ends (d).

Neaten allowances. Press the allowances and pocket pouches apart (e).

Press the pocket pouch inside the front skirt panel, pin and stitch. Neaten allowances (f).

Step 12



Zipper

Pin the zipper under the opening edge so that the little teeth are hidden. Turn the ends of the zipper strap. Stitch the zipper using a zipper foot. Note: Sew the allowances of the side seams by hand on the armholes (a).

Hemline

Neaten hemline, fold inside and press. Sew the hemline by hand (b).

Hook and eye

Sew the hooks and eyes under the front placket edges, beginning at the cross line with interspaces of 2â' (5 cm), the hooks to the right and the eyes to the left ©.

BurdaStyle

Mila