

Sarah

By: burdastyle

<http://www.burdastyle.com/projects/sarah--2>



This is a very simple and fast to sew pattern for a cape. Be creative in the choice of trim that is sewn to all the edges and sleeves of the cape.

Step 1

Pattern Pieces

1 Front and Back Piece 2x

2 Fringes

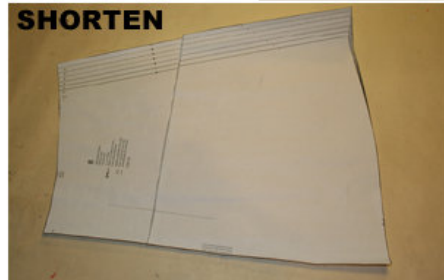
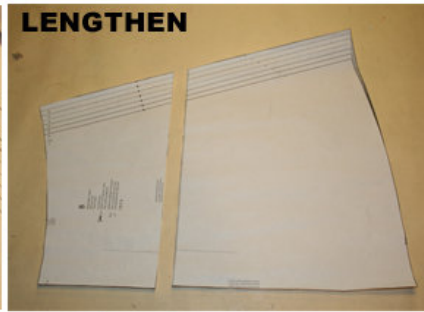
Step 2



The patterns can be printed out at the copy shop. If you decide to print them at home, follow the instructions: Paper cut for ANSI A (German DIN A4) prints:

The patterns are printed out on 20 sheets with a thin frame. Wait until all sheets are printed out. Arrange the sheets so that they fit together (see additional page with the overview of the prints). Fold the single sheets on the upper and right edge along the thin frame lines. Begin with the left lower sheet and then tape the frame lines together precisely.

Step 3



ADJUST PATTERN SIZES

Select your size according to the Burda-dimension table: dresses, blouses, jackets and coats according to the bust size, trousers and skirts according to the hip width. Change the pattern to fit your measurements if they deviate from the Burda-size chart. Cut out the pattern according to your size.

Refer to our “ Adjust patterns for mixed sizes” technique

LENGTHENING OR SHORTENING THE PATTERN PIECES

Our pattern is calculated for a height of 5’ 6” (168 cm). If you are taller or shorter, you can adjust the pattern pieces along the lines marked “lengthen or shorten here”. This way the proper fit is maintained.

Always adjust all pattern pieces along the same line to the same degree.

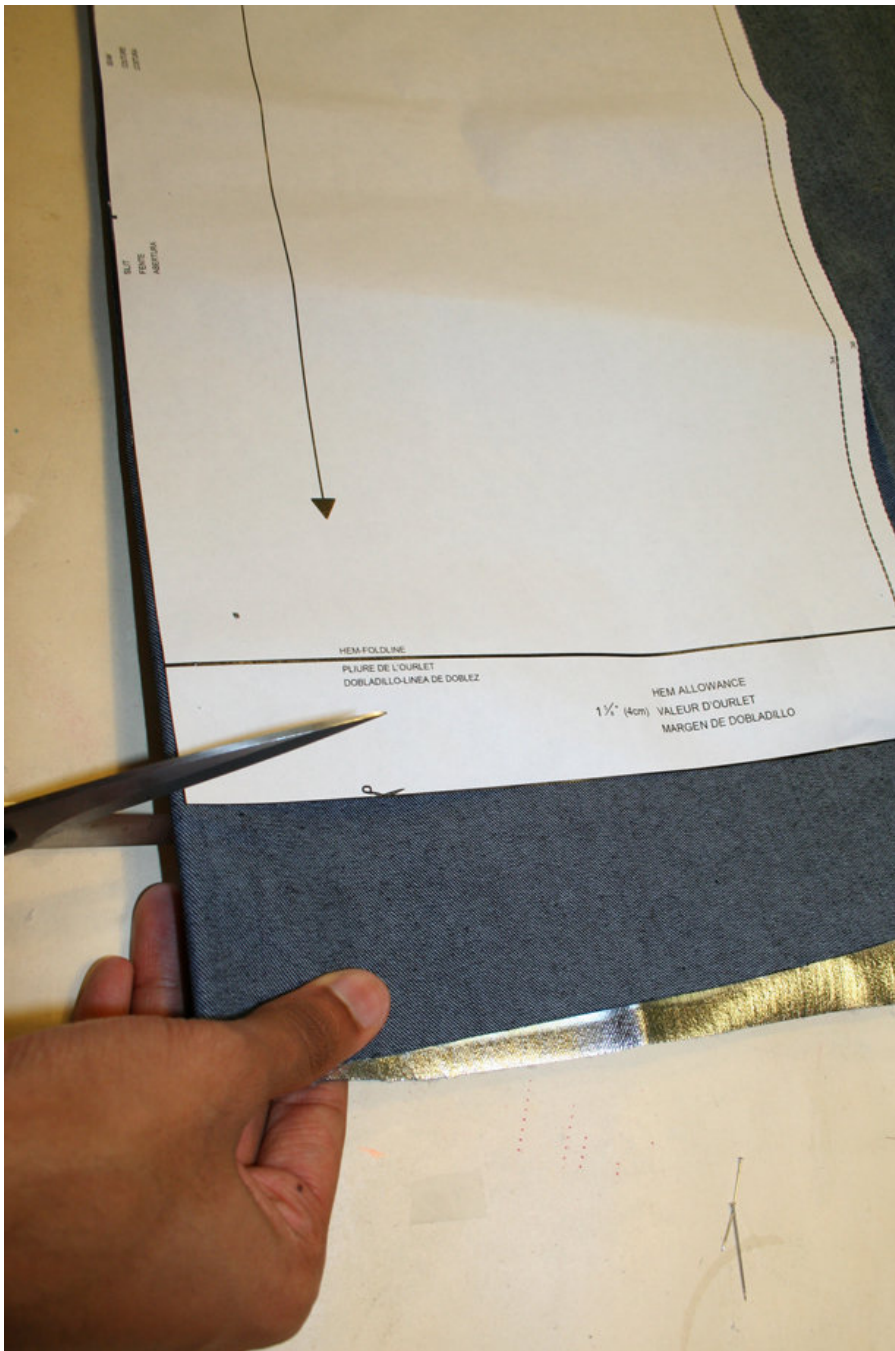
How to lengthen and shorten pattern pieces:

Cut the pattern pieces along the marked lines

To lengthen, slide the two halves of the pattern piece as far apart as necessary.

To shorten, overlap the two halves of the pattern piece as far as necessary. Blend the side edges.

Step 4



CUTTING OUT

FOLD () means: Cut on the fold, the fold being the center of the pattern piece, but never a cut edge or seam. The piece should be cut double, with the fold line forming the center line. Pattern pieces that are outlined with a broken line in the cutting diagrams are to be placed face down on the fabric. The cutting diagrams on the pattern sheet show how the pattern pieces should be placed on the fabric.

The cutting diagrams show the placement of the pattern on the fabric.

For a single layer of fabric, the pattern pieces are pinned to the right side. For double layers of fabric, the right sides are facing and the pattern pieces are pinned to the wrong side. The pattern pieces that are shown extending over the fold of the fabric in the cutting diagram should be cut last from a single layer of fabric .

Step 5

SEAM AND HEMLINE ALLOWANCES are included on an average:

1 5/8" (4 cm) for hem, 5/8" (1.5 cm) for all edges and stitches. Using BURDA copying paper, transfer the lines and signs of the pattern onto the wrong side of the fabric. Instructions can be found in the packaging.

Sewing

While sewing, the right sides of the fabric are facing.

Transfer all lines of the pattern onto the right side of the fabric using basting stitches.

Step 6

BOLERO

Back Middle Seam

Place Bolero pieces onto each other, right sides facing, stitch back middle seam. Iron seam allowances in one direction. Trim the lower seam allowance. (a) Fold over and pin the upper allowances and stitch neatly (b).

Side and Lower Sleeve Seams

Fold bolero at the marked shoulder, right side inside. Stitch side and lower sleeve seams (seam number 4).

Trim seam allowances and debaste them held together. Iron to one side. ©

Step 7

Fringes

Mark seam allowances (1.5 cm or 5/8 inch) with basting stitches at the outer jacket edge.

Fold strips for fringes lengthwise, iron the wrong side inside. (a)

Pin the selvage of the fringe strips to the marked line of the outer jacket edge and stitch with small, narrow zigzag stitches. Fringe the strips (b). Cut the seam allowances of the jacket ©. Pin fringe strips onto the lower sleeve edges in the same fashion and fringe them.

Pleats/ Lower Sleeve Edges

Fold sleeves, right side inside. Stitch other pleat lines onto each other until you

Reach the pleat arrow. Secure seam ends. Iron pleat as with inverted pleats. (d) Pin pleat and stitch at the fringe stitching line (e).

BurdaStyle

Sarah