

5/2010 Jersey Dress

By: burda style magazine

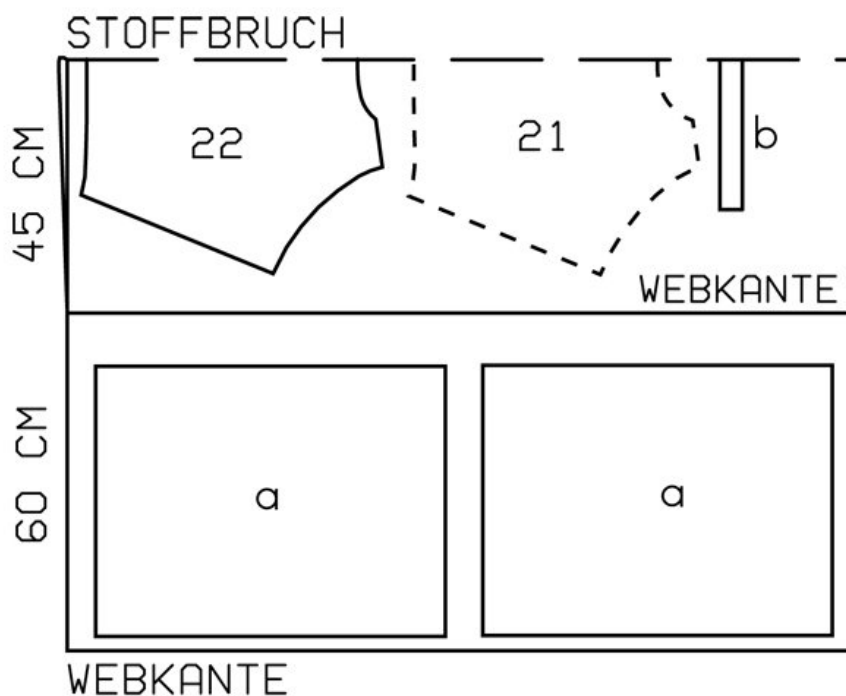
<http://www.burdastyle.com/projects/52010-jersey-dress>

Jersey Dress burda style magazine patterns FAQ

Materials

Fine stretch jersey

Step 1 — Preparation



105 36-44

Trace the pattern pieces from the pattern sheet.

Seam and hem allowances:

Seams and edges 1.5 cm (5/8 in), edges of armholes 1 cm (3/8 in), hem 4 cm (15/8 ins).

Step 2 — Cutting Out



21front, on a fold 1x

22back, on a fold 1x

a) 2 skirt panels, 46 — 48 — 50 — 52 — 54 cm (18¹/₈ — 19 — 19³/₄ — 20¹/₂ — 21¹/₄ ins) wide, 62 cm (24¹/₂ ins) long,

b) facing strip for neck edge, 52 — 53 — 54 — 55 — 56 cm (20¹/₂ — 21 — 21¹/₄ — 21³/₄ — 22¹/₄ ins) long, 4 cm (1⁵/₈ ins) wide (incl. allowance).

Vilene Bias Tape: Iron onto edges of armholes.

Step 3 — Note

Use a special stretch stitch for seams on stretch fabric or stitch at a narrow zigzag setting. Keep hems elastic by stitching with a twin machine needle.

Step 4 — Right shoulder seam

Stitch right shoulder seam. Trim -seam allowances, neaten together and press onto back.

Step 5 — Facing strip and neck edge

Fold facing strip for neck edge lengthwise, right side out, and press. Pin doubled facing strip along neck edge so that fold edge of strip lies on garment piece, 1 cm (3/8 in) past seam line. Stitch along neck edge. Turn facing to inside. Press edge. Stitch left shoulder seam, laying facing strip up again and stitching ends of strip together. Topstitch 7 mm (1/4 in) from neck edge, with the twin needle.

Step 6 — Side seams on bodice

Stitch side seams on bodice. Press allowance on edges of armholes to inside. Stitch from right side 7 mm (1/4 in) from edge, with the twin needle.

Step 7 — Side seam of skirt

Stitch side seams of skirt panels.

Step 8 — Stitching skirt to bodice

Stitch skirt to bodice. Neaten seam allowances together, press up, and stitch as marked to form casing.

-Leave a section of seam open to insert elastic. Insert elastic. Sew ends together for a finished circumference of 68 — 72 — 76 — 80 — 84 cm (26 3/4 — 28 1/2 — 30 — 31 — 33 ins). Stitch seam opening closed.

Step 9 — Hem

Press hem to inside. Stitch hem 3 cm (1 1/4 ins) from fold edge, working from right side and using the twin needle.

BurdaStyle

5/2010 Jersey Dress