

09/2011 Wrap dress

By: burda style magazine

<http://www.burdastyle.com/projects/092011-wrap-dress>



Wrap dress burda style magazine patterns FAQ

Materials

Crpe chiffon

Step 1 — Preparation



Paper cut for ANSI A (German DIN A4) prints:

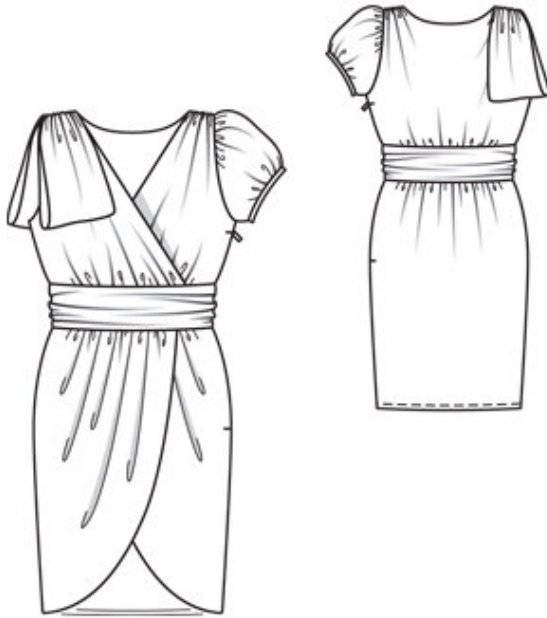
This pattern is printed on 8.5 × 11 sheets of plain paper. Do not scale or center pages before printing. Wait until all sheets are printed out before beginning to tape them together. **Do not cut out pattern pieces yet**— Arrange the sheets on a large, hard, flat surface so that they fit together, matching up like numbers and letters (i.e. 6A to 6A). To tape pattern together, fold under the margin of one piece (6A) and tape right against the line of it's matching number/letter (6A).

burda style magazine pattern do not have seam allowance included.

Seam and hem allowances to be added: Seams and edges 1.5 cm (5/8 in).

see example here: <http://www.burdastyle.com/projects/072011-jumpsuit/instructions/1>

Step 2 — Cutting out



Crpe chiffon:

1 front 4x

2 back, on a fold 2x

3 front waistband piece, on a fold 1x

4 front draped piece, on a fold 1x

5 back waistband piece, on a fold 1x

6 back draped piece, on a fold 1x

7 front skirt panel 4x

8 back skirt panel, on a fold 1x

9 left sleeve 1x

a) bias binding strip for lower sleeve edge, 32 â— 33 â— 34 â— 35 â— 36 cm (123/4 â— 13 â— 13 1/2 â— 13 3/4 â— 14 1/4 ins) long, 3.5 cm (1 1/2 ins) wide (incl. allow^{ances}),

b) shoulder scarf, cut on ^{the} bias, 90 cm (36 ins) long, 40 cm (16 ins) wide, finished width 20 cm (8 ins).

Lining:

3 front waistband, on a fold 2x

5 back waistband, on a fold 2x

8 front skirt lining, on a fold 1x

8 back skirt lining, on a fold 1x

Interfacing (G 785): See pattern layout. Iron Vilene Bias Tape/stay tape to wrong side of neck edge and armhole edges of inside ^{the} pieces.

Step 3 — Shoulders

Gather the shoulder seam edges of front and back pieces to a width of 5 cm (2 ins). Stitch the shoulder seams, catching a strip of fabric, in length of shoulder seam, on back shoulder edges. Press seams open but do not press gathering flat.

Step 4 — Neck and armhole

Lay the inner and outer front and back pieces each right sides facing. Stitch the neck edges together. On right piece, stitch the armhole edges together. Trim the seam allowances. Turn inside pieces over the seam allowances and stitch as far as possible, next to the seams. Turn right side out and press neck and armhole edges. Stitch the right side seam on the inner and outer piece as continuous seam. Baste the edges of left side seam, the left armhole edge and the lower front and back edges together, without turning in

Step 5 — Waistband

Lay the front and back waistband pieces on the respective interfaced lining pieces, with the wrong side facing the right side, and baste. Gather the front and back draped pieces on the side edges and baste to the respective waistband pieces. Also baste upper and lower edge of draped pieces in place. Stitch the right side seam of the waistband.

Step 6 — Bodice

Gather lower edge of bodice between asterisks as follows: to 14 — 15 — 16 — 17 — 18 cm (5½ — 6 — 6¾ — 6¾ — 7 ins) on front, to 11 cm (4¾ ins) wide from centre front, and to 26 — 28 — 30 — 32 — 34 cm (10¼ — 11⅛ — 12 — 12¾ — 13½ ins) on back. Lay right front on left front, with wrong side facing right side, matching centre fronts. Baste lower edges together. Stitch bodice to upper edge of waistband. Press seam allowances onto waistband, not pressing draped folds flat.

Step 7 — Skirt

Press the hem allowance of the back skirt panel to the inside, turn in, and baste. Lay two front skirt panels each right sides facing and stitch lower edges together. Trim the seam allowances. Lay the back skirt panel between both right front skirt panels. Pin the side seam edges together and stitch. Trim the seam allowances. Pull the back skirt panel out and turn the front skirt panels right side out. Press the side seam and the lower edge. Lay the back skirt panel between both left front skirt panels and pin the side seam edges together below the slit mark. Stitch, beginning 10 cm (4 ins) below the slit mark and leaving remainder of the edge open. Clip the seam allowances at beginning of seam. Pull back skirt panel out again, turn front skirt panels right side out, and press. Baste upper edges together. Also baste side edges of left front skirt panel together.

Step 8 — Pleats

Fold the pleats in the front skirt panels in direction of arrows and baste. Gather the upper edge of the skirt panels between the asterisks: front skirt panels to 13.5 — 14.5 — 15.5 — 16.5 — 17.5 cm (5⅜ — 5¾ — 6¼ — 6½ — 7 ins) wide, from centre front to 7.5 cm (3 ins), and back skirt panel to 25 — 27 — 29 — 31 — 33 cm (10 — 10¾ — 11½ — 12¼ — 13 ins). Lay the right front skirt panel on the left front skirt panel, with wrong side facing right side, matching centre fronts. Baste

upper edges together. Stitch the skirt piece to the waistband. Press the seam allowances onto the waistband.

Step 9 — Zip

Sew the invisible zip to left side edges, between slit marks. Leave top ends of zip tapes loose. Stitch left side seam from upper edge to zip. On skirt, stitch remaining open seam closed, to zip.

Step 10 — Sleeve

Stitch the sleeve seam. Gather lower edge of sleeve between the asterisks to a width of 24 $\hat{=}$ 24 $\hat{=}$ 23 $\hat{=}$ 23 $\hat{=}$ 23 cm (91/2 $\hat{=}$ 91/2 $\hat{=}$ 91/8 $\hat{=}$ 91/8 $\hat{=}$ 91/8 ins). Stitch the ends of binding strip together to match the sleeve edge. Fold the binding strip in half lengthwise and press, right fabric side facing out. Pin the folded binding strip to right side of lower edge of sleeve, so that the fold edge lies on the garment piece, 1.2 cm (1/2 in) past marked seam line. Stitch the binding strip in place, along the marked seam line. Trim the seam allowances to 5 mm (3/16 in) wide. Fold the binding strip over the seam allowance to the inside and baste over joining seam. Work from right side to edgestitch binding in place.

Step 11 — Sleeve caps

Gather the sleeve caps between asterisks. Set in the sleeves.

Step 12 — Scarf

Fold the shoulder scarf piece lengthwise, right side facing in. Stitch the lengthwise edges together. Press the seam allowances open. Turn the shoulder scarf right side out. Press the scarf so that the seam lies centred along the back. Mark the middle of the shoulder scarf. Stitch the ends together. Lay the seam under the middle of the shoulder scarf and baste in place. Gather the shoulder scarf to 6 cm (23/8 ins) long, on each side of centre. Knot gathering threads and hide threads on back of scarf. Pin middle of scarf over the right shoulder seam, with scarf extending past armhole edge. Stitch scarf in place along seam.

Step 13 — Lining

Stitch side seams of skirt lining, leaving opening for zip. Turn in hem allowance and stitch. Stitch right side seam of waistband lining (as mirror image of outer waistband). Stitch waistband lining to skirt lining. Pin upper edge of waistband lining to upper waistband joining seam of dress, right sides facing $\hat{=}$ lining points up. Stitch lining close to seam, as far as possible. Turn lining to inside. Sew remaining open edges to seam and to zip tapes, by hand.

BurdaStyle

09/2011 Wrap dress