

Blossom Shorts 03/2012

By: burda style magazine

<http://www.burdastyle.com/projects/blossom-shorts-032012>

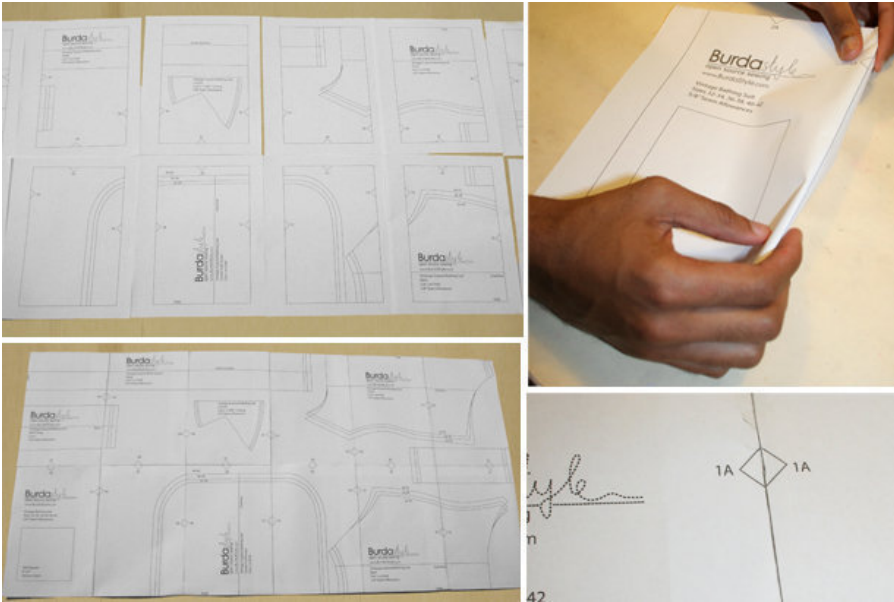


Shorts sewing pattern. These shorts are super easy to sew with a great fit. No buttons or zippers, just an elastic waistband. Simplify them even further by skipping the tie-belt piece. burda style magazine patterns
FAQ

Materials

Batiste, width: 135 cm (53 ins) length: Size 34 – 36: 1.30 (1 1/2 yds) Size 38 – 42: 1.40 m (1 5/8 yds) Elastic, 2 cm (3/4 in) wide: 0.65 0.70 0.75 0.80 0.85 m (26 28 30 32 34 ins).

Step 1 — Preparations



Paper cut for ANSI A (German DIN A4) prints:

This pattern is printed on 8.5 × 11 sheets of plain paper. Do not scale or center pages before printing. Wait until all sheets are printed out before beginning to tape them together. **Do not cut out pattern pieces yet**— Arrange the sheets on a large, hard, flat surface so that they fit together, matching up like numbers and letters (i.e. 6A to 6A). To tape pattern together, fold under the margin of one piece (6A) and tape right against the line of it's matching number/letter (6A).

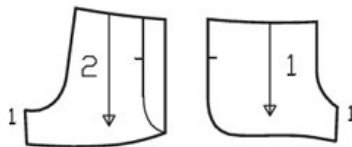
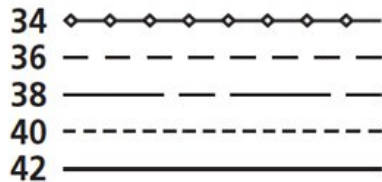
Trace the pattern pieces from the pattern sheet following the lines and markings for the correct size. Follow the cutting diagram to make a full-sized paper pattern piece for the tie band (b).

burda style magazine pattern do not have seam allowance included.

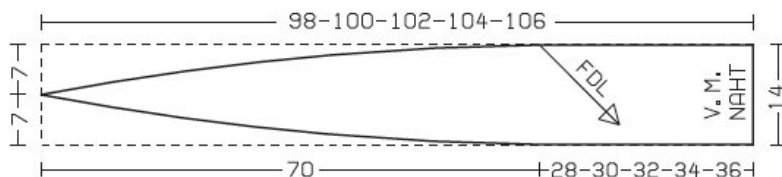
Seam and hem allowances to be added: Seams, edges, and hem 1 cm (3/8 in), no allowances on long edges of tie band.

Step 2 — Cutting out and sewing the tie-belt

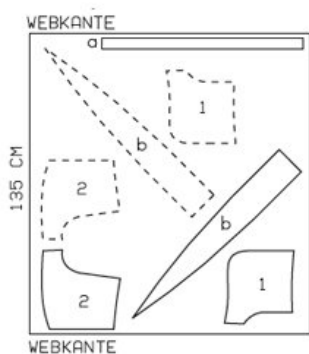
Pattern Pieces 1 and 2



How to draft the belt piece. Measurements in centimeters.



Fabric width 135 cm



Webkante = Selvage
Stoffbruch = Fabric fold

- 1 front shorts piece 2x
- 2 back shorts piece 2x

Also draft and cut the following pieces:

a) waistband, one rectangular piece in the following dimensions (incl. allow):

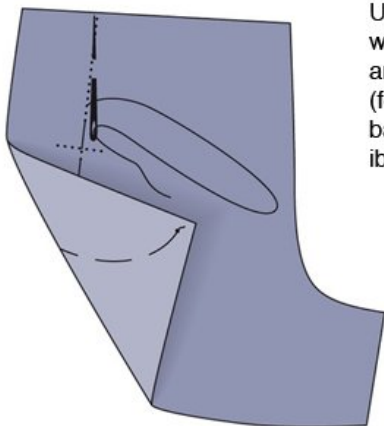
- Size 36: 88 × 7 cm (34 3/4 × 2 3/4 ins)
- Size 38: 92 × 7 cm (36 1/4 × 2 3/4 ins)
- Size 40: 96 × 7 cm (37 3/4 × 2 3/4 ins)
- Size 42: 100 × 7 cm (39 1/2 × 2 3/4 ins)
- Size 44: 104 × 7 cm (41 × 2 3/4 ins)

b) tie band, 2x, see diagram for measurements

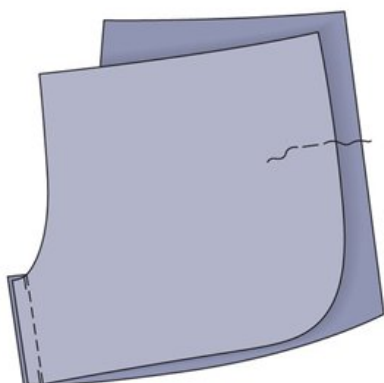
Sewing the tie band:

Stitch straight ends of tie band pieces right sides together. Press allowances to one side, turn in, and stitch. Lay tie band on shorts so that seam of band lies on centre front seam and half of band extends past upper edge. Stitch tie band along line of seam, beginning 1 cm (3/8 in) below upper waistband edge.

Step 3 — Sewing

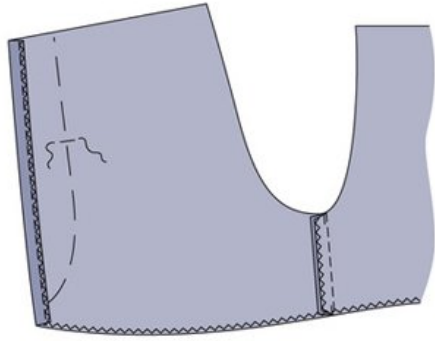


Use dressmaker's carbon paper and a tracing wheel to transfer the placement line (piece 2) and the seam marks to wrong side of fabric (follow manufacturer's instructions). Then hand baste along these lines to make them also visible on the right side of the fabric.

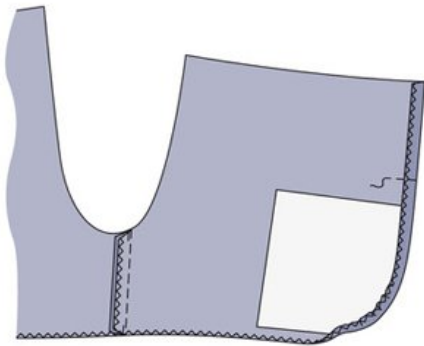


Lay one shorts front piece right sides together with a back piece. Pin the inner leg seam, matching seam numbers (1). Stitch seam 1 cm (3/8") from fabric edges. Finish edges of seam allowances together with zigzag or overlock stitching. Press seam allowances toward back pieces. Stitch inner leg seam on remaining front and back pieces in same manner.

Step 4 — Sewing

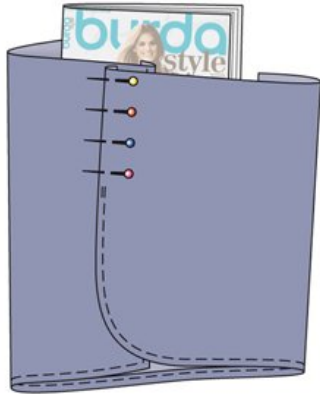


Finish side and lower edges of shorts units, with zigzag stitching or overlock. On each shorts back piece, press the seam allowance (1 cm/ 3/8" wide) on side edge to the wrong side and edgestitch it in place.

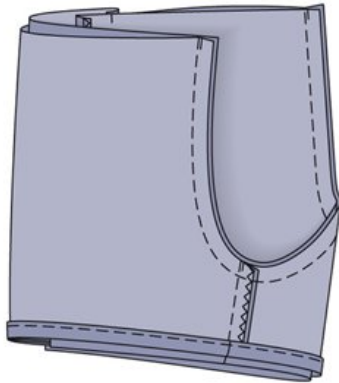


Then press allowances on the lower edge and the front edge to the wrong side. This will be easy with the help of a template: Trace the curve from the paper pattern piece onto stiff cardboard. Cut out the cardboard piece. Lay this cardboard template on the wrong side of the fabric. Press the seam allowance to the wrong side, over the template curve. Edgestitch allowances in place, beginning at the seam mark.

Step 5 — Sewing

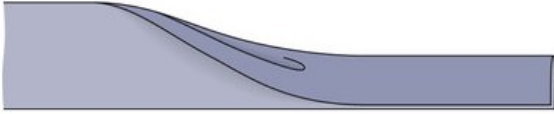


Lay one shorts front on the shorts back, to meet the marked placement line – the wrong side of the shorts front faces the right side of the shorts back. Pin edge of shorts front in place, from the upper edge to the seam mark – lay a magazine or piece of cardboard in the shorts leg to prevent catching lower fabric layer. Edgestitch the pinned edge in place. Sew second shorts leg in same manner.



Turn one shorts leg wrong side out. Pull this leg over the second shorts leg (right fabric sides are facing). Pin the center seam, matching the inner leg seams. Stitch center seam 1 cm (3/8") from the fabric edges. Finish edges of the seam allowances together. Press allowances to one side, from each upper edge to beginning of crotch curve.

Step 6 — Sewing

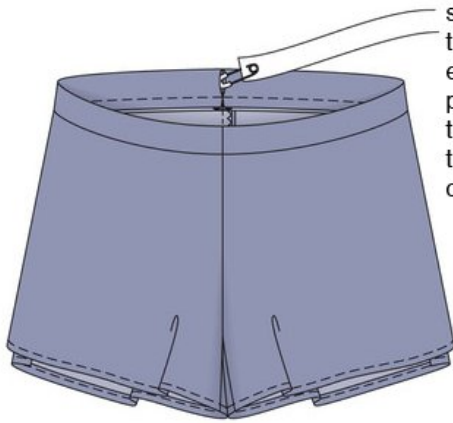


Fold waistband in half lengthwise, wrong side facing in. Press fold edge (= upper edge). Unfold waistband again. Pin narrow edges together, right sides facing. Stitch narrow edges together, from one long edge to pressed fold. Leave the remaining seam open, to pull elastic into the waistband, later. Press seam open.

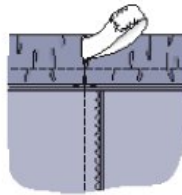
Step 7 — Sewing



Fold waistband on pressed fold again and pin open edges together. Pin these waistband edges together to upper edge of shorts, right sides facing, matching waistband seam to center back seam of shorts – the open seam section of waistband lies on outside. Stitch waist-band to shorts, stitching 1 cm (3/8") from fabric edges. Finish edges of seam allowances together and press allowances down.



Using a safety pin as a bodkin, pull end of elastic through the open seam section, along the waistband, and out the open seam section again. Pin ends of elastic together with the safety pin. Try the shorts on and adjust elastic as needed. Then sew ends of elastic together. Sew open seam section closed, by hand.



BurdaStyle

Blossom Shorts 03/2012