

# Kimono 02/2012

By: burda style magazine

<http://www.burdastyle.com/projects/kimono-022012>

---



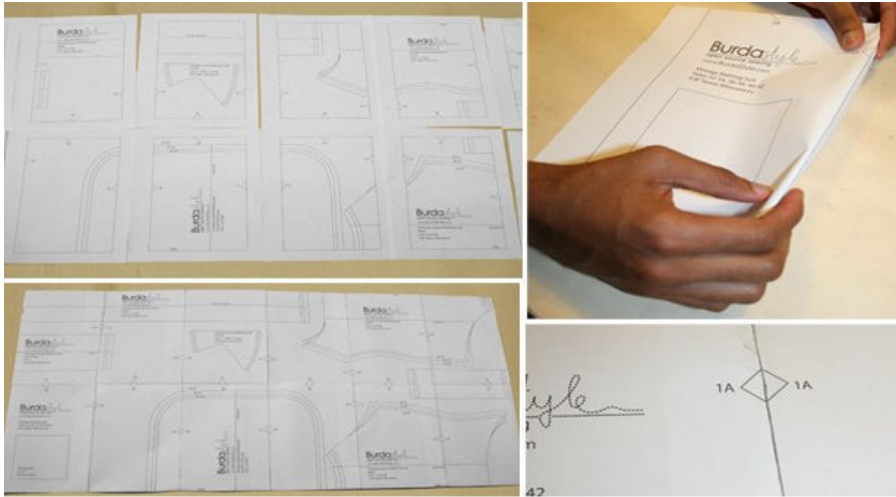
Kimono sewing pattern. This pattern is great for beginners and has easy to follow step-by-step image instructions. Get the pattern and make yourself a luxurious kimono! burda style magazine patterns FAQ

## Materials

Printed crepe de Chine, fabric width: 140 cm (55 ins) length: sizes 36, 38: 1.50 m (13/4 yds), sizes 40, 42, 44: 1.95 m (21/8 yds) Cream-coloured satin, fabric width: 140 cm (55 ins) length (for bands): 0.45 m (1/2 yd) for all sizes Black satin for the belt: 0.35 m (3/8 yd)

---

## Step 1 — Preparations



Paper cut for ANSI A (German DIN A4) prints:

This pattern is printed on 8.5" x 11" sheets of plain paper. Do not scale or center pages before printing. Wait until all sheets are printed out before beginning to tape them together.

Do not cut out pattern pieces yet.

Arrange the sheets on a large, hard, flat surface so that they fit together, matching up like numbers and letters (i.e. 6A to 6A). To tape pattern together, fold under the margin of one piece (6A) and tape right against the line of its matching number/letter (6A). Trace the pattern pieces from the pattern sheet.

Trace all pattern pieces in the desired size, with all marked lines and pattern markings, including the seam marks. Trace the pocket piece twice from piece 1 as separate pattern pieces they are the same for all sizes. Cut out the paper pattern pieces.

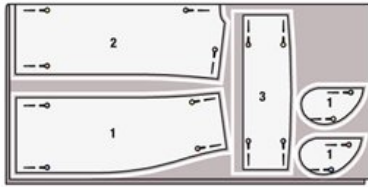
Extra tip: To find the correct size, measure your bust (size 36 = 84 cm; size 38 = 88 cm; size 40 = 92 cm; size 42 = 96 cm; size 44 = 100 cm).

No pattern pieces are given for the bands or belt. These pieces are marked directly on the fabric, following measurements given in step 3, "Cut out the band pieces"

---

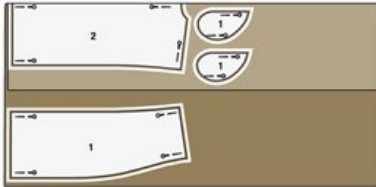
## Step 2 — Cutting

## 2A CUTTING FOR SIZES 36, 38



Fold fabric as shown in the pattern layout, right fabric side facing in. Lay pattern pieces on fabric and pin them in place. Use tailor's chalk to draw seam allowances along the edges of the pattern pieces as follows: 4 cm (1½ ins) for sleeve hems and 1 cm (¾ in) at all other seams and edges. Cut out the fabric pieces along the marked lines.

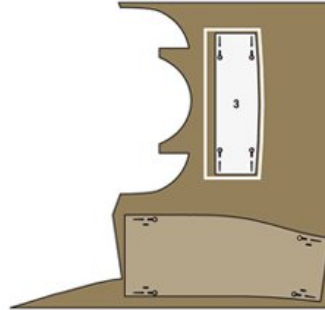
## 2B CUTTING FOR SIZES 40, 42, 44, IN TWO STEPS



Fold one fabric edge over, 45 cm (18 ins) wide – the right fabric side faces in. Pin pattern piece for back to fabric, on the fold, and pin pattern pieces for pockets to the doubled fabric. Pin pattern piece for the front to the single fabric layer. Use tailor's chalk to draw 1 cm (¾ in) wide seam allowances along all edges of pattern pieces. Cut out fabric pieces. Then unfold fabric, in order to ...

**Cut these pieces:**

- 1 Front 2x
- Pocket 4x
- 2 Back, on fold 1x
- 3 Sleeve 2x



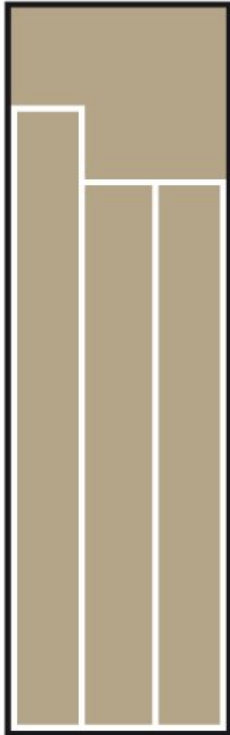
... cut out the remaining pattern pieces. Lay fabric piece for front on single layer of fabric, right sides facing. Lay pattern piece 3 on right side of the fabric. Pin pieces in place. Mark allowances around piece 3 (4 cm/ 1½ ins for hem and 1 cm/ ¾ in on all other edges). Cut out fabric pieces. Pin fabric sleeve piece to remaining fabric, right sides facing, and cut out second sleeve piece.

Cut the pieces according to the layout.

---

## Step 3 — Cut the band pieces

### 3 CUT OUT BAND PIECES



Draw band pieces on wrong side of fabric as follows:

- a) hem band: size 36: 118 cm; size 38: 122 cm; size 40: 126 cm; size 42: 130 cm; size 44: 134 cm long, all 12 cm wide,
- b) 2 neck bands: size 36: 103.5 cm; size 38: 104.5 cm; size 40: 105.5 cm; size 42: 106.5 cm; size 44: 107.5 cm long, all 12 cm wide. Measurements incl. seam allowances (1 cm = approx. 2.54 inches).

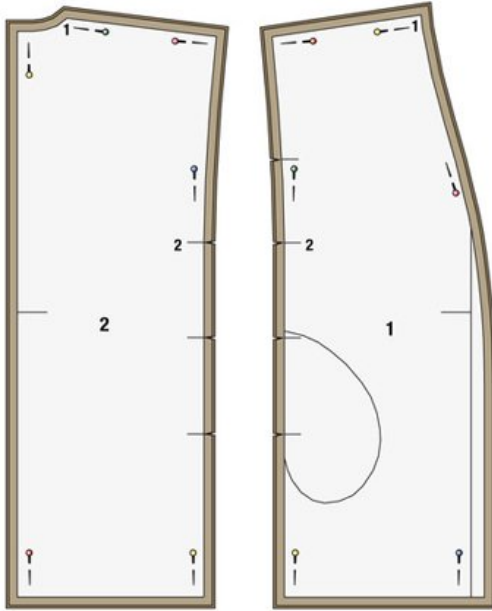
Cut the band pieces according to the layout.

---

### Step 4 — Transfer pattern markings

#### 4 TRANSFER PATTERN MARKINGS

If you have accurately added the seam allowances and cut out the fabric pieces, it is not necessary to transfer the seam lines to the fabric. Mark the seam marks for pocket openings, the upper ends of the side seams (seam number 2), and the sleeve attachment marks by making small clips – 5 mm ( $\frac{3}{16}$  in) are sufficient – in the edges of the seam allowances.



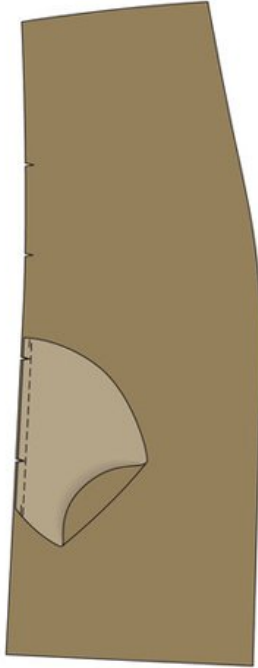
Transfer the pattern markings according to the instructions.

---

### Step 5 — Attach pocket pieces

## 5 ATTACH POCKET PIECES

Pin one pocket piece each to side seam edges of front and back pieces, right sides facing, matching the clips (step 3). Stitch each pocket piece in place, stitching 7 mm ( $\frac{1}{4}$  in) from the edge of the fabric. Turn all pocket pieces over the attachment seams and press.



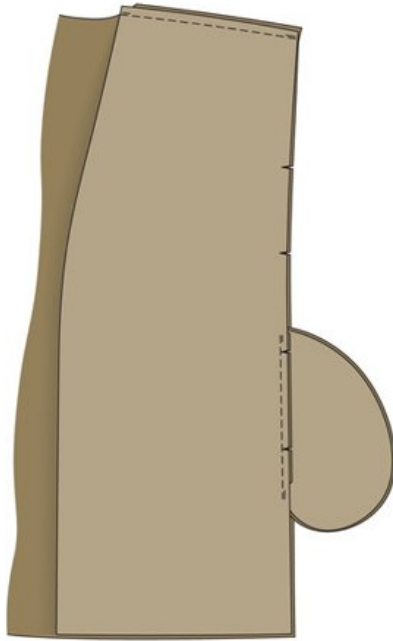
Attach the pocket pieces according to the instructions.

---

## Step 6 — Shoulder seams

## 6 SHOULDER SEAMS

Lay front pieces on back piece, right sides facing. Pin shoulder edges together. Stitch shoulder seams, stitching 1 cm ( $\frac{3}{8}$  in) from fabric edge. Tie-off beginning and end of each seam with backstitching. Finish edges of seam allowances together. Press seam allowances toward back.



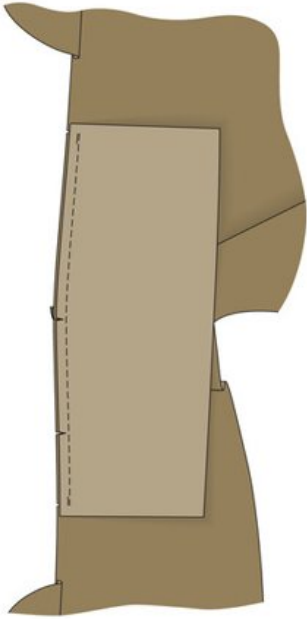
Sew the shoulder seams.

---

## Step 7 — Attach sleeves

## 7 ATTACH SLEEVES

Pin each sleeve to side edge of front and back, right sides facing. Seam attachment marks (seam number 4) must match. The seam mark at centre of sleeve must meet shoulder seam. The sleeve extends 1 cm ( $\frac{3}{8}$  in) past each seam mark for side seam. Stitch sleeve in place, stitching 1 cm ( $\frac{3}{8}$  in) from fabric edge and beginning and ending seam at side seam marks.



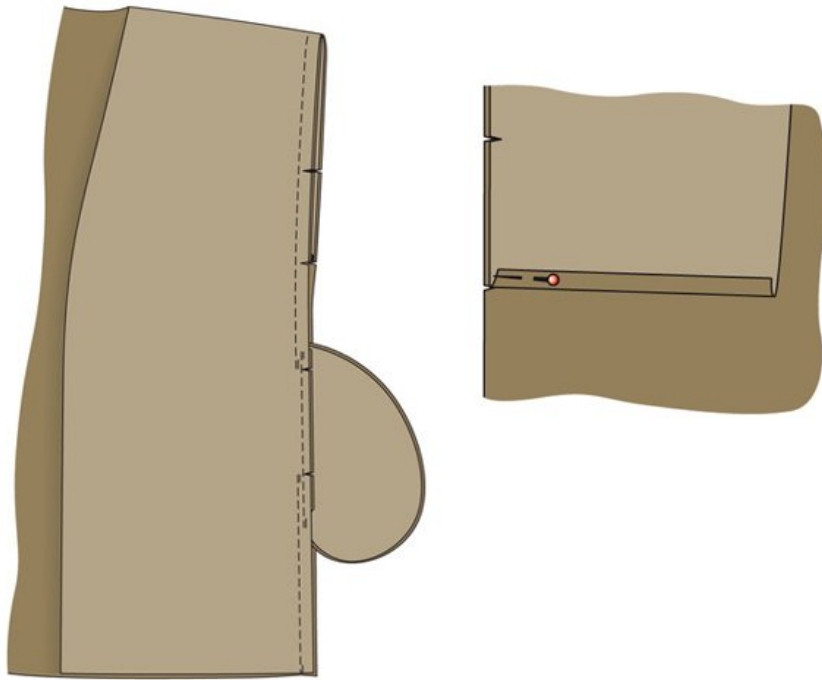
Attach sleeves according to the instructions.

---

### Step 8 — Side seams

## 8 SIDE SEAMS

At each side seam mark, fold sleeve up and pin. Lay front pieces on back piece, right sides facing. Pin side seams below sleeves. Stitch side seams, stitching 1 cm ( $\frac{3}{8}$  in) from fabric edge and leaving pocket openings open between seam marks. Remove pins from sleeves.



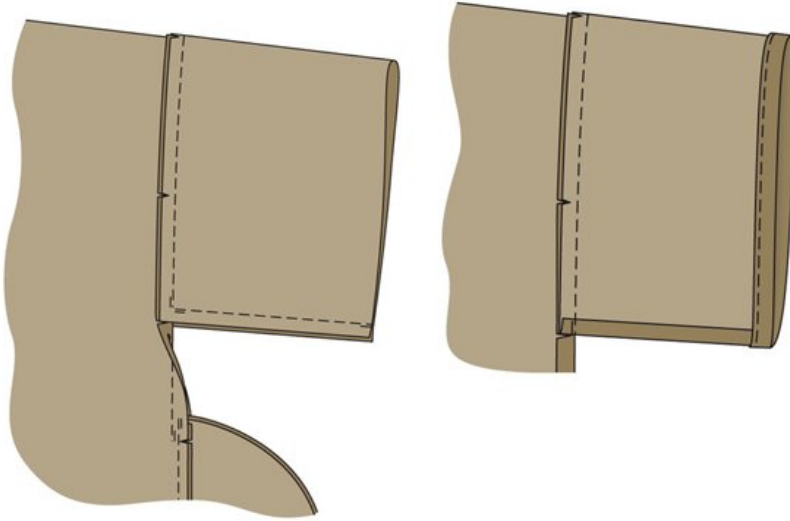
Follow the instructions to sew the side seams.

---

## Step 9 — Sleeve seams and hems

## 9 SLEEVE SEAMS, SLEEVE HEMS

Turn allowances of sleeve attachment seams toward front and back pieces. Pin lower sleeve edges together. Stitch sleeve seams. Press seams open and finish edges of seam allowances. Finish edges of allowances of side seams and sleeve attachment seams. Press sleeve hems to inside (4 cm/ 1½ in wide), turn edge under to 2 cm (¾ in) wide, and edgestitch in place.



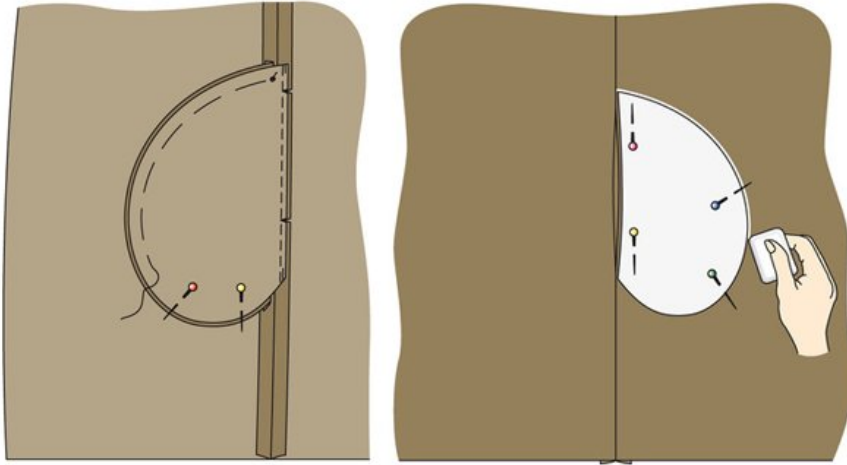
Sew the sleeve seams according to the instructions.

---

### Step 10 — Stitch the pockets in place

## 10 STITCH POCKETS IN PLACE

Turn pocket pieces toward front and pin in place. Baste pocket edges in place. Working from the outer side of the front, lay the paper pattern piece on each pocket and mark around edge of the pattern piece with tailor's chalk. Remove the pattern piece. Stitch along the marked outline.



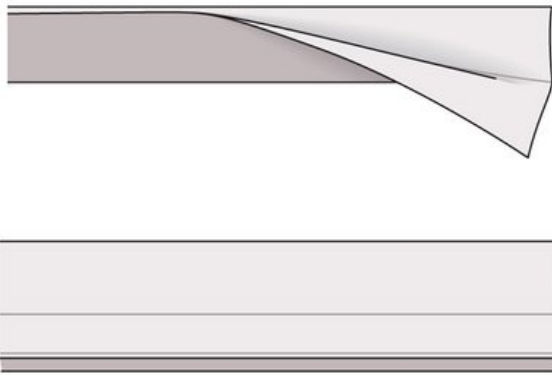
Sew the pockets in place.

---

## Step 11 — Prepare the bands

## 11 PREPARE BANDS

Stitch neck band pieces (see "Cutting", b) together, right sides facing, to form one long strip. Press seam open. Fold neck band and hem band each in half lengthwise, wrong side facing in. Press bands. Unfold bands again. On each band, press one long edge to wrong side of fabric, 1 cm ( $\frac{3}{8}$  in) wide.



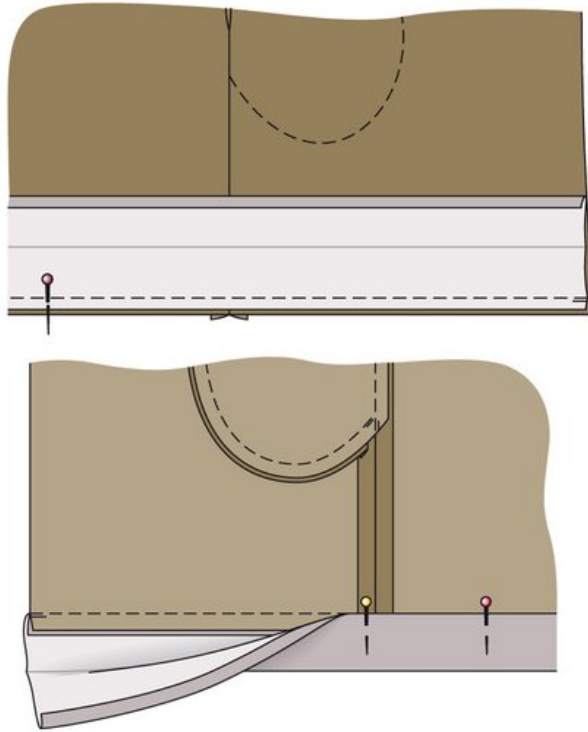
Follow the instructions to prepare the bands

---

### Step 12 — Attach the hem band

## 12 ATTACH HEM BAND

Pin open edge of hem band to lower edge of kimono, right sides facing. Stitch band in place, stitching 1 cm ( $\frac{3}{8}$  in) from fabric edge. Press seam allowances toward band. Fold band along pressed fold and pin inner (fold) edge over attachment seam. Working from outer side of the kimono, topstitch band close to attachment seam, thereby catching the inner edge.



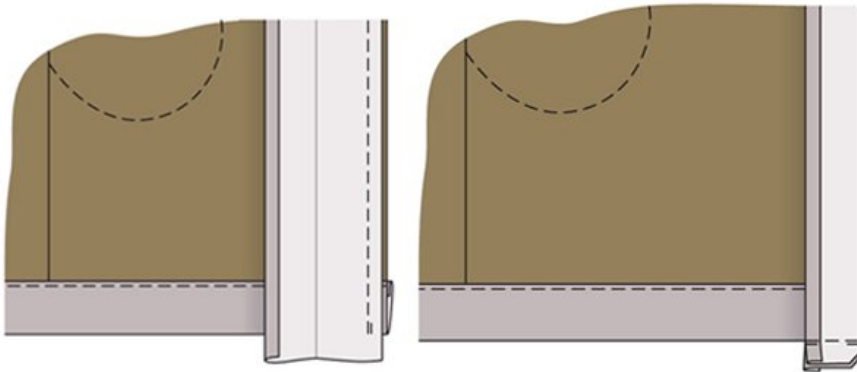
Follow the instructions to attach the hem band.

---

## Step 13 — Neck band

### 13 NECK BAND

Stitch open edge of neck band to front and neck edges, right sides facing. The ends of the band extend 1 cm ( $\frac{3}{8}$  in) past hem edge of kimono. Press allowances toward band. Fold each lower end of band to outside, along pressed fold. Stitch ends closed. Trim allowances diagonally across corners. Turn band ends right side out. Finish sewing front band as described for the hem band.



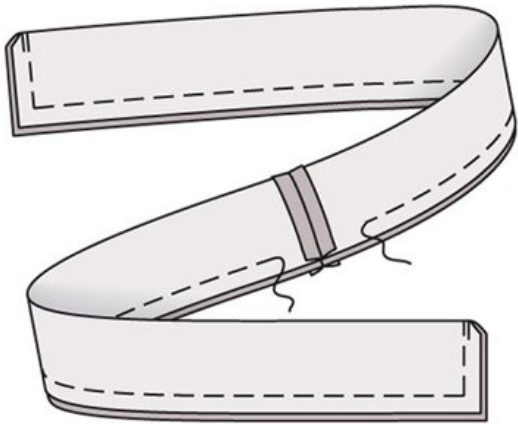
Sew the neck band.

---

### Step 14 — Tie belt

## 14 TIE BELT

For the belt, cut 2 pieces, each 85 cm (34 ins) long and 15 cm (6 ins) wide. Stitch pieces together, right sides facing, to form one long piece. Fold belt in half lengthwise, right side facing in. Stitch open edges together, stitching 1 cm ( $\frac{3}{8}$  in) from fabric edge and leaving approx. 10 cm (4 ins) open on long edge. Turn belt right side out, through seam opening, and press. Sew seam opening closed.



Follow instructions to make the belt.

---

**BurdaStyle**

Kimono 02/2012