

06/2010 Maxi Dress

By: burda style magazine

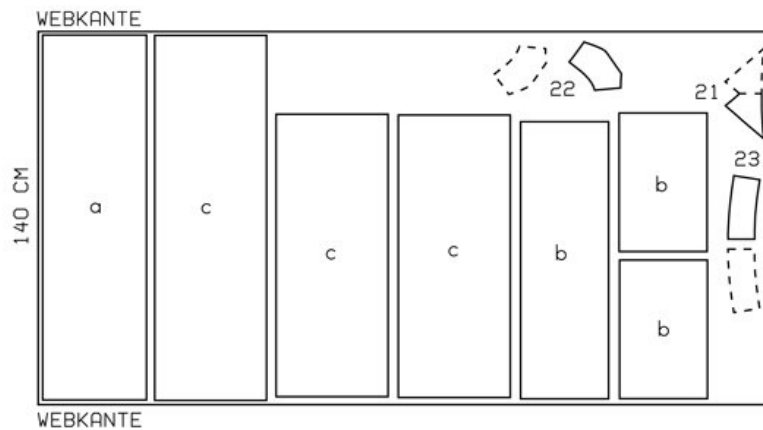
<http://www.burdastyle.com/projects/062010-maxi-dress>

Maxi Dress burda style magazine patterns FAQ

Materials

eyelet/broderie anglaise

Step 1 — Preparation



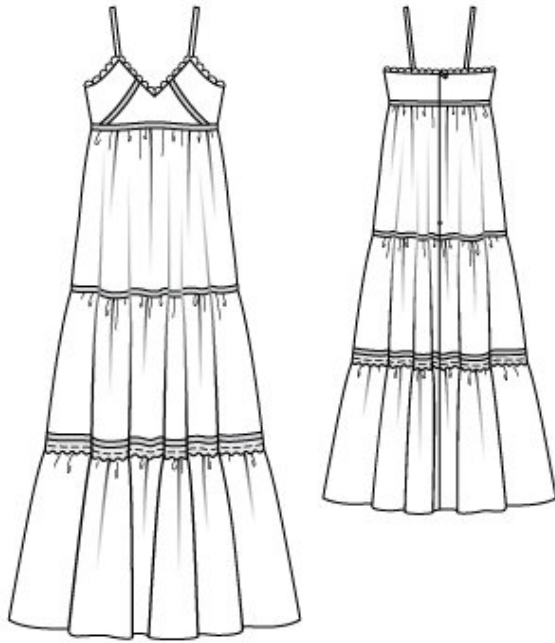
117 34-42
MADEIRASTICKEREIBATIST

Trace pattern pieces from pattern sheet.

Seam and hem allowances:

Seams, edges and hem 1.5 cm (5/8 in).

Step 2 — Cutting out



Broderie anglaise:

21 centre front, on a fold 1x

22 side front 2x

23 back 2x

a) upper skirt tier, 113 — 119 — 125 — 131 — 137 cm (44 1/2 — 47 — 49 1/4 — 51 1/2 — 54 ins) wide, 39 cm (15 1/2 ins) long,

b) middle skirt tier, 1 piece 98 — 101 — 104 — 107 — 110 cm (38 3/4 — 39 3/4 — 41 — 42 1/4 — 43 1/2 ins) wide and 2 pieces 49 — 50 — 52 — 53 — 55 cm (19 1/4 — 19 3/4 — 20 1/2 — 21 — 21 3/4 ins) wide, each 33 cm (13 ins) long,

c) lower skirt tier, 1 piece 137 cm (54 ins) wide and 2 pieces 100 — 103 — 106 — 109 — 112 cm (39 1/2 — 40 3/4 — 41 3/4 — 43 — 44 1/4 ins) wide, each 42 cm (16 1/2 ins) long,

d) 2 straps, 37 — 38 — 39 — 40 — 41 cm (14 1/2 — 15 — 15 1/2 — 15 3/4 — 16 1/4 ins) long, 3 cm (1 1/4 ins) wide, finished width 1.5 cm (5/8 in).

Plain batiste (lining):

pieces 21 to 23.

d) 2 straps, 37 — 38 — 39 — 40 — 41 cm (14 1/2 — 15 — 15 1/2 — 15 3/4 — 16 1/4 ins) long, 3 cm (1 1/4 ins) wide, finished width 1.5 cm (5/8 in).

Step 3 — Sides

Stitch side fronts to centre front. Press seam allowances to centre. Stitch lace trim to centre front along section seams. Stitch side seams of bodice.

Step 4 — Straps

Fold each strap lengthwise, right side facing in, and along long edge and across one end. Turn strap right side out. Stitch lace trim to straps, turning in ends. Baste straps to upper edges of backs, 9 — 9.5 — 10 — 10.5 — 11 cm (3 5/8 — 3 3/4 — 4 — 4 1/4 — 4 3/8 ins) from centre back.

Step 5 — Lining seams

Stitch lining seams. Lay lining right sides together with dress bodice and stitch upper edges together. Trim seam allowances and clip at centre front. Turn lining to inside. Baste edges together without turning in. Now first lay lace trim for upper edge of dress on upper front edge, with right side facing down and matching centres. Leave scalloped edge extending. Mitre lace trim at centre front, at point of neck edge. Pin trim along front neck edge to top points and mitre trim at points. Remove straight pins. Press mitring seams flat. Stitch trim to upper edges of back and front pieces, with wrong side facing right side.

Step 6 — Upper Skirt

Gather upper edge of upper skirt tier to match bodice. Pin drawstring trim to allowance on edge of upper skirt tier. Edgestitch lower edge of trim in place. Press allowance onto skirt tier and stitch trim in place again. Pin other edge of drawstring trim to allowance on lower edge of bodice and edgestitch upper edge of trim in place. Press allowance toward bodice and stitch edge of trim in place again.

Step 7 — Lower and middle skirts

Stitch seams of middle and lower skirt tiers, leaving centre back open. Gather upper edges of skirt tiers. Stitch 2 cm (3/4 in) wide trim to upper edge of middle skirt tier and lower edge of upper skirt tier, one after the other, as instructed for skirt joining seam. Stitch straight edge of 4 cm (1 5/8 ins) wide lace trim onto one edge of remaining 2 cm (3/4 in) wide trim. Pin this trim to upper edge of lower skirt tier and stitch so that scallops lie 2 cm (3/4 in) wide on skirt tier. Stitch upper edge of trim to lower edge of middle skirt tier. Press seam allowances to inside and stitch.

Step 8 — Zip

For zip, measure 38 cm (15 ins) down from back edges and mark. Sew invisible zip to back opening edges. Stitch centre back seam from lower edge to zip. Turn in top ends of zip tapes and sew in place.

Step 9 — Straps

Pin front ends of straps under front points of neck edge. Try on garment. Sew straps in place.

Step 10 — Hem allowance

Press hem allowance to inside, turn in, and stitch.

BurdaStyle

06/2010 Maxi Dress