

12/2011 Sequined dress

By: burda style magazine

<http://www.burdastyle.com/projects/122011-sequined-dress>



Sequined dress burda style magazine patterns FAQ

Materials

Silk velvet, sequin fabric

Step 1 — Preparation



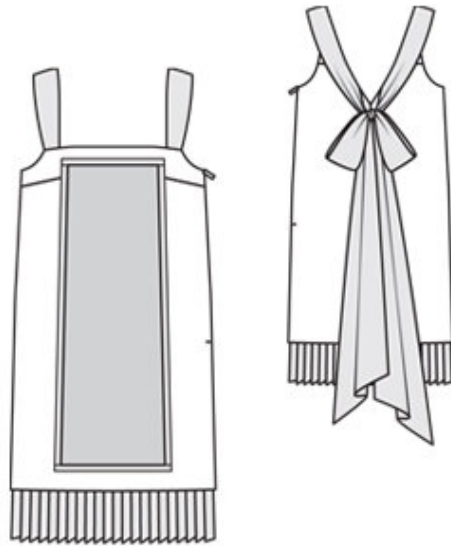
Paper cut for ANSI A (German DIN A4) prints:

This pattern is printed on 8.5 × 11 sheets of plain paper. Do not scale or center pages before printing. Wait until all sheets are printed out before beginning to tape them together. **Do not cut out pattern pieces yet**— Arrange the sheets on a large, hard, flat surface so that they fit together, matching up like numbers and letters (i.e. 6A to 6A). To tape pattern together, fold under the margin of one piece (6A) and tape right against the line of it's matching number/letter (6A).

burda style magazine pattern do not have seam allowance included.

Seam and hem allowances to be added: Seams and edges 1.5 cm (5/8 in).

Step 2 — Cutting out



Velvet:

1 front, on a fold 1x

3 back 2x

4 front strap piece 2x

5 back strap piece 2x

Sequin fabric:

2 front panel, on a fold 1x

a) backing strips for front panel, 3 cm (1 1/4 ins) wide: one strip 26 — 27 — 28 — 29 — 30 cm (10 1/4 — 10 3/4 — 11 1/8 — 11 1/2 — 12 ins) long, one strip 29 — 30 — 31 — 32 — 33 cm (11 1/2 — 12 — 12 1/4 — 12 3/4 — 13 ins) long, and two strips 69 — 70 — 70 — 71 — 72 cm (27 1/4 — 27 3/4 — 27 3/4 — 28 — 28 1/2 ins) long.

Cut the backing strips from the plain edge of the sequin fabric.

Chiffon:

6 scarf, on a fold 2x

b) hem band, 2x 110 cm long and 2x 50 — 55 — 60 — 65 — 75 cm (19 3/4 — 21 3/4 — 23 3/4 — 25 3/4 — 29 3/4 ins) long, each 16 cm (6 3/8 ins) wide.

Lining: pieces 1 and 3 to lining line and also pieces 4 and 5.

Interfacing: See pattern layout. Iron shaped strips of interfacing, 3 cm (1 1/4 ins) wide, to wrong side of front lining piece and back lining pieces.

Pleating:

Stitch each shorter hem band to one long hem band piece. Neaten seam allowances together and press to one side. Have band pieces pleated commercially: triple pleats, pleat width 2 cm (3/4 in). The total length of the pleated band should be 100 — 104 — 108 — 112 — 116 cm (39 1/2 — 41 — 42 1/2 — 44 1/4 — 45 3/4 ins).

Step 3 — Bust darts

Stitch bust darts. Press darts down. Stitch centre back seam, beginning exactly at marked upper seam line.

Step 4 — Front

On the front panel piece, cut and remove sequins which lie on seam allowances of all edges. Turn seam allowance to inside and baste. Baste backing strips under edges of panel so that they extend 1.5 cm (5/8 in) wide. Pin front panel to front at abutting line, with wrong side facing right side. Sew panel edges in place, with running stitch, by hand. Outer edges of the backing strips are left loose.

Step 5 — Shoulder seams

Stitch shoulder seams on strap pieces with no interfacing. Stitch strap pieces to upper back edge. Press seam allowances down.

Step 6 — Darts

Stitch darts and centre back seam of lining. Stitch shoulder seams of interfaced strap lining pieces. Stitch strap lining pieces to back lining piece.

Step 7 — Front armhole edges, upper front edge

Pin front lining piece right sides together with front. Stitch along armhole edges and upper front edge, leaving an opening for straps between corners of armhole and seam marks. Trim seam allowances. Turn facing to inside. Press edges.

Step 8 — Scarf

Fold scarf pieces lengthwise, right side facing in. Stitch along slanted ends and long edges, up to seam mark (seam number 4). Beginning at seam mark, taper stitching to edge of seam allowance. Turn scarf pieces right side out. Baste open edges of scarf together to back neck edge, from seam mark (seam number 4), then baste to long edge of strap, up to seam number 3.

Step 9 — Back neck edge, straps and back armhole edges

Pin back lining right sides together with back and pin strap pieces together, catching the scarf pieces. Stitch along back neck edge then along strap edge, up to seam number 3, as a continuous seam. Turn under scarf pieces, from fold edge, and baste to interfaced strap pieces so they are not caught in the seam when facing the strap edges. Stitch back facing to back armhole edges, then stitch strap edges together. Trim seam allowances. Turn straps right side out by pulling front ends of straps through to back, through the tunnel. Turn facing to inside. Remove basting on scarf pieces. Lay scarf pieces on straps and baste to front ends of straps.

Step 10 — Lining

Turn lining up. Stitch right side seam on main fabric and lining as continuous seam. Sew invisible zip to left opening edges, see — Helpful Hint— on page 21. Stitch left side seam from lower edge to zip. Stitch left side seam of lining below slit mark. Turn in lining edges and sew to zip tapes.

Step 11 — Hem

Press hem allowance of dress to inside and sew in place by hand. Neaten lower edge of lining.

Step 12 — Hem band

Stitch hem band pieces together within a pleat fold so that hem band matches lower edge of lining. Neaten seam allowances together and press to one side. Lay hem band on lower edge of lining, 3 cm (1 1/4 ins) wide, with wrong sides facing. Stitch 1.5 cm (5/8 in) from edge of band

BurdaStyle

12/2011 Sequined dress