

# Azalea

By: burdastyle

<http://www.burdastyle.com/projects/azalea>

---



A beautiful summery dress that can be made in less than a day!

# Materials

chiffon, regular charmeuse, stretch cotton

## Step 1



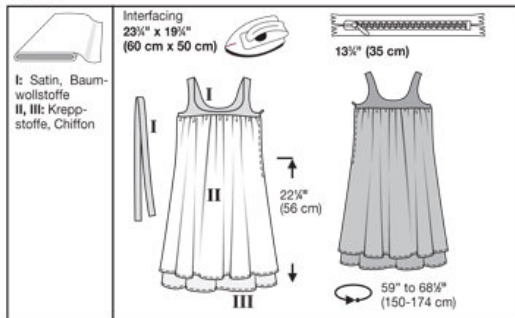
easy

### burda Download-Pattern Dress 6004 - Instructions

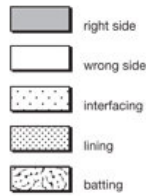
close fitting

burda sizes		55 ins / 140 cm						
		34	36	38	40	42	44	46
I	yds	7/8	7/8	7/8	7/8	7/8	7/8	7/8
	m	0,75	0,75	0,75	0,75	0,80	0,80	0,80
II	yds	1 1/8	1 1/8	1 1/8	1 1/8	1 1/8	1 1/8	1 1/8
	m	1,60	1,60	1,60	1,60	1,60	1,60	1,60
III	yds	1 7/8	1 7/8	1 7/8	1 7/8	1 7/8	1 7/8	1 7/8
	m	1,70	1,70	1,70	1,70	1,70	1,70	1,70

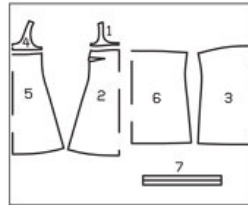
→ with nap



I: Satin, Baumwollstoffe  
II, III: Kreppstoffe, Chiffon



Patternpieces:



- 1 Front yoke 2x
- 2 Front 1x
- 3 Upper front 1x
- 4 Back yoke 2x
- 5 Back 1x
- 6 Upper back 1x
- 7 Belt 2x

Fabrics: I: Satin, Cotton; II: Crepe or chiffon

## Step 2



The patterns can be printed out at the copy shop. If you decide to print them at home, follow the instructions: Paper cut for ANSI A (German DIN A4) prints:  
 The patterns are printed out on 40 sheets with a thin frame. Wait until all sheets are printed out. Arrange the sheets so that they fit together (see additional page with the overview of the prints). Fold the single sheets on the upper and right edge along the thin frame lines. Begin with the left lower sheet and then tape the frame lines together precisely.

### Step 3



#### ADJUST PATTERN SIZES

Select your size according to the Burda-dimension table: dresses, blouses, jackets and coats according to the bust size, trousers and skirts according to the hip width. Change the pattern to fit your measurements if they deviate from the Burda-size chart. Cut out the pattern according to your size (a). Refer to our "Adjust patterns for mixed sizes" technique

## LENGTHENING OR SHORTENING THE PATTERN PIECES

Our pattern is calculated for a height of 5â€ 6â€ (168 cm). If you are taller or shorter, you can adjust the pattern pieces along the lines marked “lengthen or shorten here”. This way the proper fit is maintained. Always adjust all pattern pieces along the same line to the same degree (b).

How to lengthen and shorten pattern pieces:

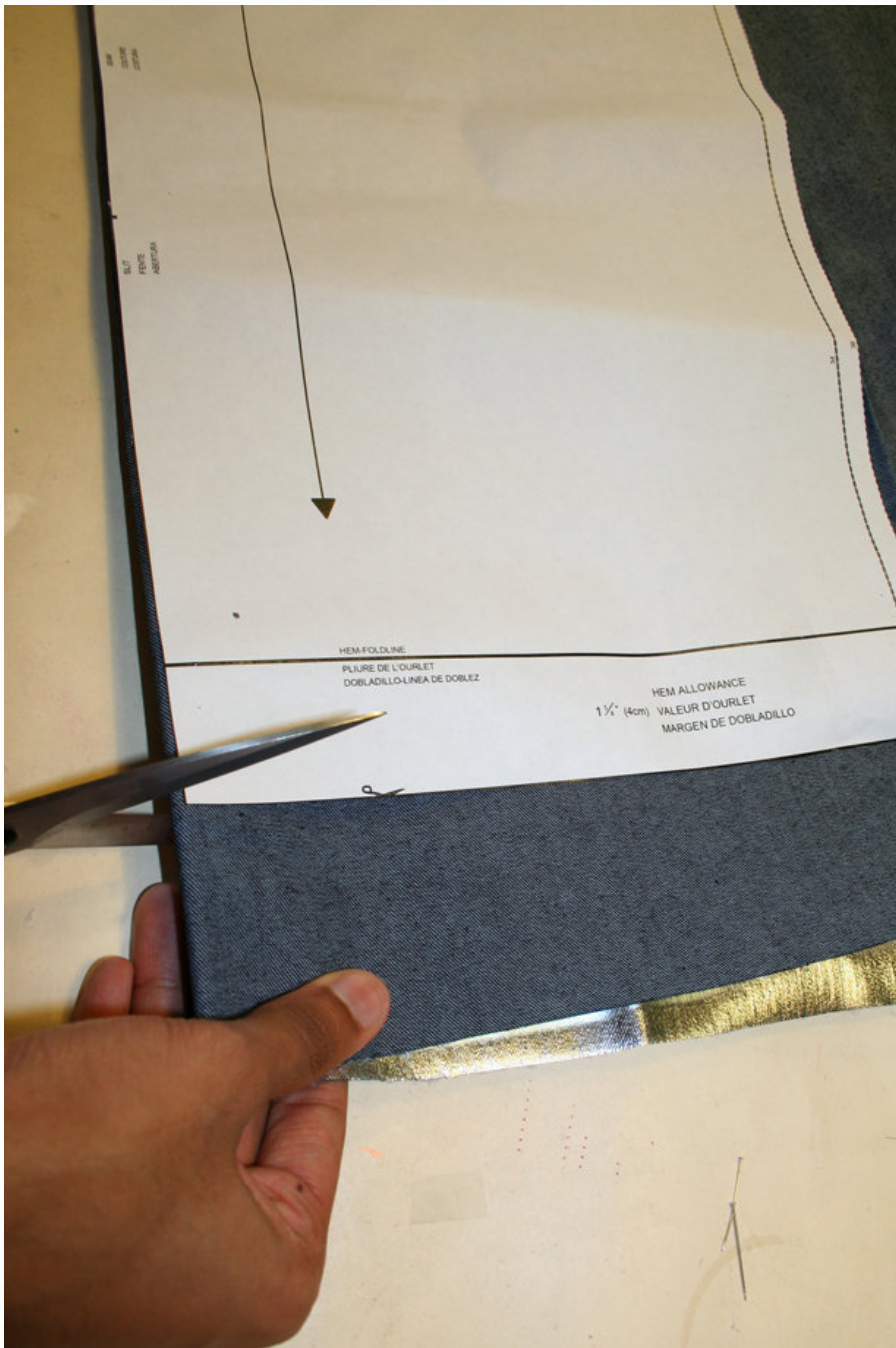
Cut the pattern pieces along the marked lines

To lengthen, slide the two halves of the pattern piece as far apart as necessary.

To shorten, overlap the two halves of the pattern piece as far as necessary. Blend the side edges ©.

---

## Step 4



## CUTTING OUT

FOLD ( ) means: Cut on the fold, the fold being the center of the pattern piece, but never a cut edge or seam. The piece should be cut double, with the fold line forming the center line. Pattern pieces that are outlined with a broken line in the cutting diagrams are to be placed face down on the fabric. The cutting diagrams on the pattern sheet show how the pattern pieces should be placed on the fabric (a).

The cutting diagrams show the placement of the pattern on the fabric.

For a single layer of fabric, the pattern pieces are pinned to the right side. For double layers of fabric, the right sides are facing and the pattern pieces are pinned to the wrong side. The pattern pieces that are shown extending over the fold of the fabric in the cutting diagram should be cut last from a single layer of fabric (b).

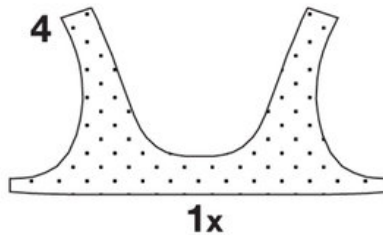
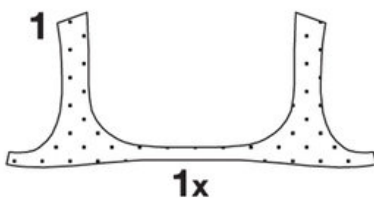
Fabric I, fabric II and fabric III

Cut pieces 1, 4 and 7 of fabric I, pieces 3 and 6 of fabric II, pieces 2 and 5 of fabric III. See cutting diagrams on the pattern.

---

## Step 5

### INTERFACING



SEAM AND HEMLINE ALLOWANCES are included on an average:

5/8" (1.5 cm) for all edges and stitches. Using BURDA copying paper, transfer the lines and signs of the pattern onto the wrong side of the fabric. Instructions can be found in the packaging.

Sewing

While sewing, the right sides of the fabric are facing.

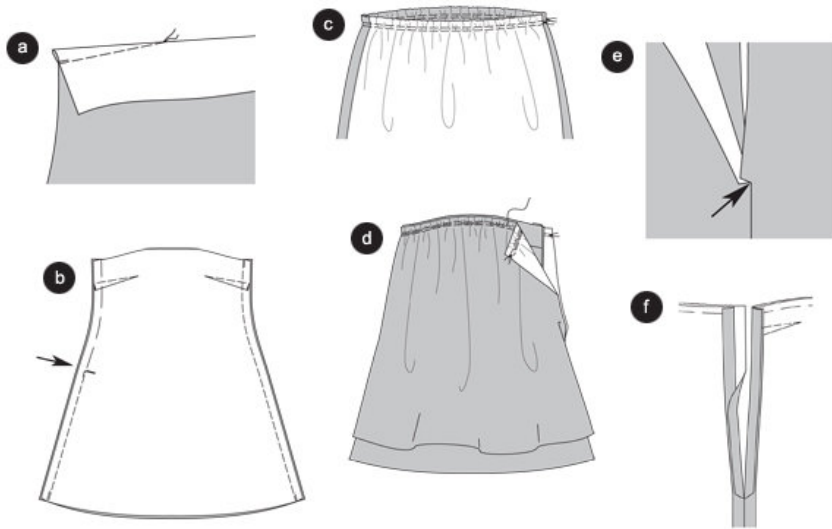
Transfer all lines of the pattern onto the right side of the fabric using basting stitches.

### INTERFACING

Cut interfacing as illustrated and press on the left side of the fabric pieces.

---

## Step 6



## DRESS

### Bust darts

Press bust darts in the front and stitch all the way to the apex. Knot threads. Press darts flat, towards the hem. (a)

### Side seams / left side slit

Lay front piece on back piece with right sides facing and pin side seams. Stitch right side seam. Stitch left seam from zipper notch (indicated with arrow on drawing) to the bottom. Secure seam ends. Leave slit where zipper will be inserted still basted. Neaten and press allowances. Open basting stitch at the slit. (b)

### Upper front and back

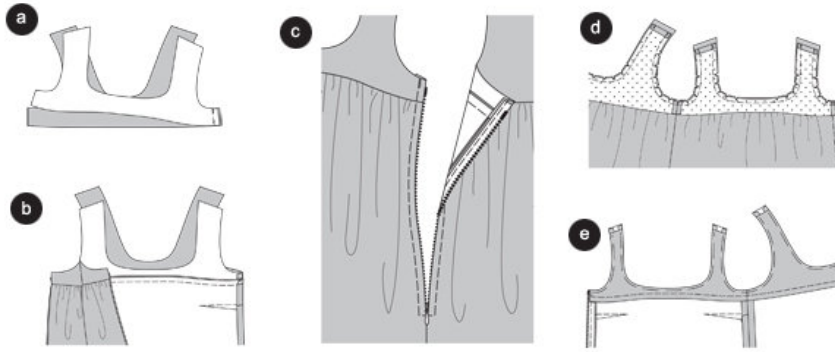
Stitch side seams (seam 4). Apply slit allowances.

To gather, stitch upper edge twice, side by side with long, wide stitches, leaving a long tail of thread at both ends. To adjust gathers, pull under thread (bobbin thread) to the width of the front and back. Knot threads. Space out the gathers evenly. ©

Pin upper dressâ€” s wrong side to the right side of the dress; side seams meet. Pin upper gathered edges on top of each other. (d)

Cut a notch in the upper dress from the slit sign close to the seam (arrow) (e) and turn the slit edges inwards (f). Pin allowances of the dress and upper dress on top of each other and neaten.

## Step 7



### Yoke / right side seam

Apply front to back yoke with right sides facing, stitch right side seam (seam 1). Stitch yoke and interfacing along the side seam. Press allowances. (a)

### Stitch yoke

Apply allowances to the slit.

Pin yoke without interfacing, with right sides facing, on the upper dress edge, right side seams meet. Stitch. Trim and press allowances. (b)

### Zipper

Baste allowances at the slit inwards.

Place zipper under the slit edges, so that it is just covered. Stitch zipper with the zipper foot. ©

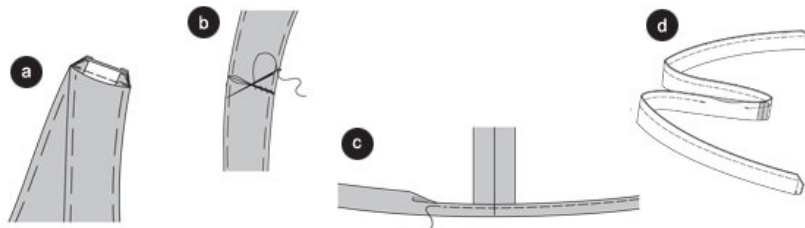
### Sewing the Yokes Together

Press the yoke's shoulder edge seam allowances including the interfacing inwards.

Pin yokes together, right sides facing; side seams meet. Fold allowances at the zipper inwards. Baste necklines and sleeve lines together and stitch. Trim allowances, cut v-shapes clips in armhole and neckline curves to

turn out yoke. Turn Yoke. Baste edges, press. Press inner lower yoke edge seam allowance inwards, apply to the seam of the bottom part of the dress, pin (d). Topstitch from the right side of the dress along the seam, to finish the inner yoke (e).

## Step 8



### Shoulder Seams

Lay fronts right sides together with back. Baste shoulder seams (seam 2). Stitch shoulder seams. Trim

allowances. (a)

Press allowances inwards. Stitch the yoke's shoulder edges by hand. (b)

#### Hemline

Press hemline of dress and upper dress, fold and baste. Stitch hemline narrowly. ©

#### Belt

Place belt halves together, right sides facing, stitch middle seam. Press allowances.

Fold belt at the Center line, right side inside. Stitch along edges, leaving an open space to turn. Secure seam ends. Trim allowances, cut corners diagonally. Turn belt inside out. Pin edges, press and topstitch besides the seam. (d)

---

**BurdaStyle**

Azalea