

# Halter Maxi-Dress 06/2012

By: burda style magazine

<http://www.burdastyle.com/projects/halter-maxi-dress-062012>

---



This dress has a hemline to the floor, and a deep front V-neckline. This maxi-dress also features godet inserts for more volume and movement, you could make these godet pieces in a contrast fabric for a burst of color! Or you could shorten the hemline for a different look.

---

## Step 1 — Preparations



This pattern is printed on 8.5 × 11 sheets of plain paper. Do not scale or center pages before printing. Wait until all sheets are printed out before beginning to tape them together. **Do not cut out pattern pieces yet**— Arrange the sheets on a large, hard, flat surface so that they fit together, matching up like numbers and letters (i.e. 6A to 6A). To tape pattern together, fold under the margin of one piece (6A) and tape right against the line of it's matching number/letter (6A).

Trace the pattern pieces from the pattern sheet following the lines and markings for the correct size and the correct style (113). (This pattern also includes pattern pieces, lines and markings for style 111 and 112 that should be ignored.)

Trace pieces 1 and 1a twice from the pattern sheet, noting the different seam lines for the right and left pieces. Glue the pieces 1 and 1a together on the joining lines. Turn left piece over, right side facing down. Glue right and left piece together at centre. Cut piece apart on the marked seam line. Glue pieces 3 and 3a together on joining lines. Trace facing from piece 3 as a separate pattern piece.

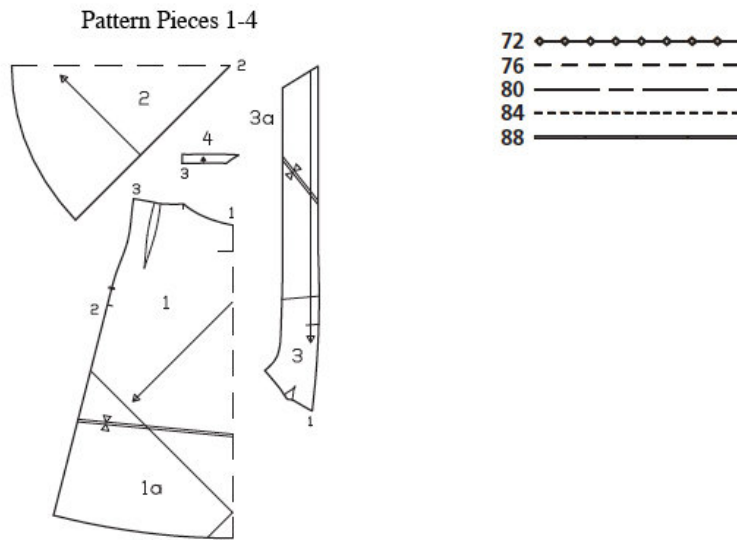
**burda style magazine pattern do not have seam allowance included.**

Seam and hem allowances to be added:

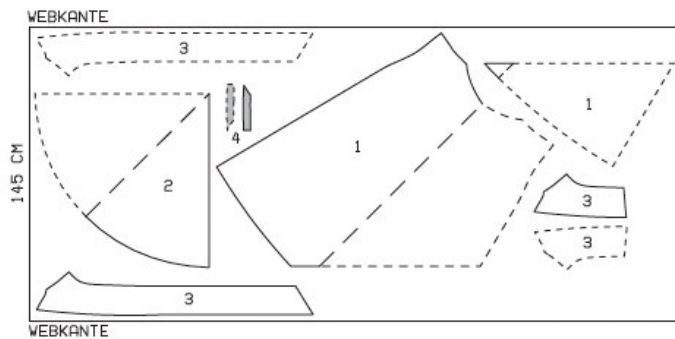
Seams, edges, and hem 1.5 cm (5/8 in)

---

## Step 2 — Cutting Out



Lay pattern pieces according to diagram below on a single layer of fabric with a width of 145 cm



Webkante = selvage

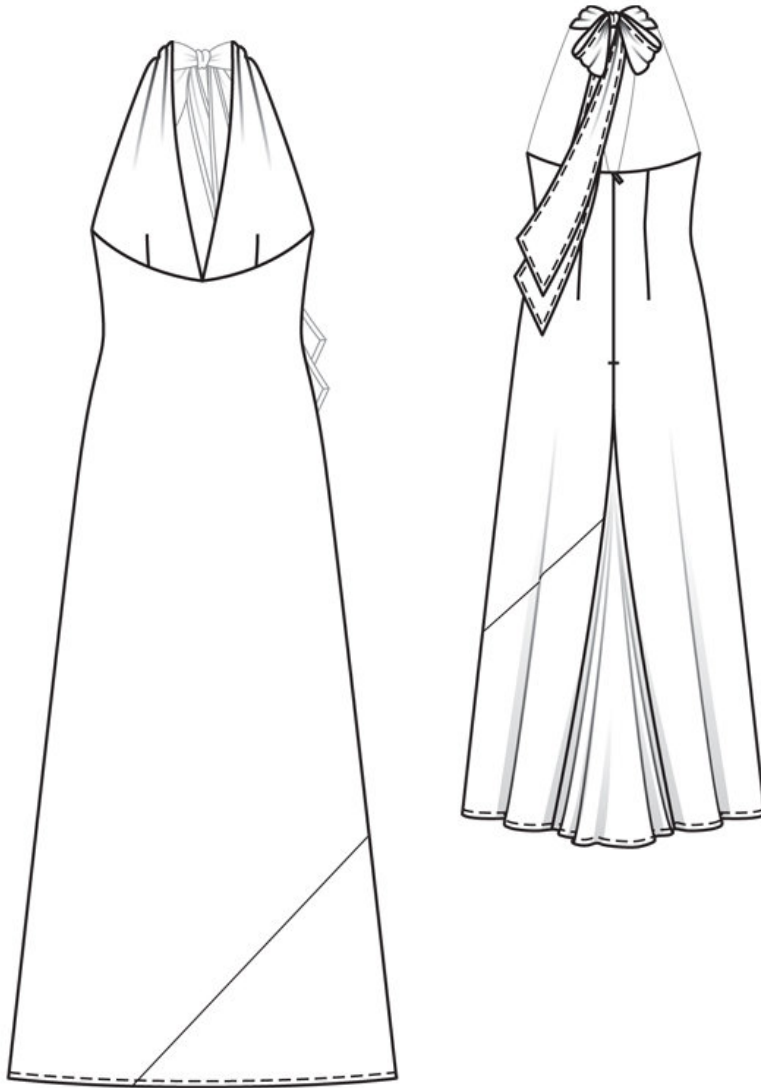
- 1 front and back, on a fold, divided each 1x
- 2 back godet, on a fold 1x
- 3 bust piece with strap 2x
- facing 2x
- 4 back facing 2x

Interfacing: fuse interfacing to wrong side of piece 4.

Iron Vilene Bias Tape/stay tape to wrong sides of upper front and back edges and to wrong sides of zipper slit edges.

---

### Step 3 — Sewing



Stitch darts in back piece starting at dart edges and stitching towards dart tip along dart lines. Press dart fullness towards centre back.

Stitch darts together along dart lines in bust pieces and facings. Press all dart fullness forwards towards centre front.

Press seam allowance on upper edges of facings to wrong side of fabric. Pin bust facings right sides together with bust pieces. Stitch together along long edges. Trim seam allowances. Turn facings to inside and press edges, then press allowances on strap edges to wrong side, turn raw edges under, and stitch. Stitch pressed-under upper facing edge in place. Stitch bust pieces to front neck edges of bust pieces meet at centre front. Leave bust pieces lying on front for now.

Sew invisible zipper to the back slit edges.

Stitch centre back seam from seam mark (godet) to bottom of zipper.

Stitch godet to open back edges below marking, matching top point 2 of godet with point 12 on centre back piece. Press seam allowances open.

Pin back facings right sides together with upper back edges. At zipper slit edges, turn facing back, approx. 5 mm (3/16 in) before edge, and pin to upper edge. Turn back slit allowance to outside and pin to upper edge, over facing. Stitch along upper back edges. Turn allowances on slit edges to inside. Turn facings up and stitch to seam allowances, close to seam, as far as possible. Turn facings to inside and sew to zipper tapes. Turn bust pieces up and press allowances of joining seams down.

Press hem allowance to inside, turn edge under by half width, and stitch in place.

---

**BurdaStyle**

Halter Maxi-Dress 06/2012