

# 6/2010 Long evening dress with "jeweled" shoulders

By: burda style magazine

<http://www.burdastyle.com/projects/62010-long-evening-dress-with>

---

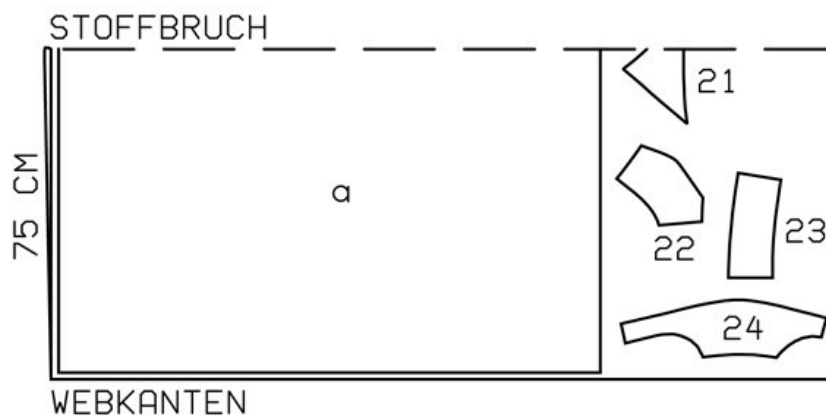
Long evening dress with "jeweled" shoulders burda style magazine patterns FAQ

## Materials

Silk chiffon and silk satin for lining

---

## Step 1 — Preparation



118 34-42  
SEIDENCHIFFON

Trace the pattern pieces from the pattern sheet.

Seam and hem allowances:

Seams, edges and hem 1.5 cm (5/8 in).

---

## Step 2 — Cutting Out



**Chiffon:**

21 centre front, on a fold 1x

22 side front 2x

23 back 2x

24 shoulder piece 2x

a) skirt panel, 131 â€ 135 â€ 139 â€ 143 â€ 147 cm (51 1/2 â€ 5 31/4 â€ 54 3/4 â€ 56 1/2 â€ 58 ins) wide, 123 cm (48 1/2 ins) long.

**Satin (lining):**

21 centre front, on a fold 2x

22 side front 4x

23 back 4x

24 shoulder piece 4x

b) skirt panel, 111 â€ 115 â€ 119 â€ 123 â€ 127 cm (43 3/4 â€ 45 1/4 â€ 47 â€ 48 1/2 â€ 50 ins) wide, 123 cm (48 1/2 ins) long,

c) 2 straps, 45 â€ 46 â€ 47 â€ 48 â€ 49 cm (17 3/4 â€ 18 1/8 â€ 18 1/2 â€ 19 â€ 19 1/4 ins) long and 4.5 cm (1 7/8 ins) wide, finished width 2.2 cm (a scant inch).

Interfacing: See pattern layout.

### **Step 3 — Basting front and back pieces of chiffon and satin**

Baste front and back pieces of chiffon on respective satin pieces, with wrong side facing right side. Treat as one layer of fabric from now on. Use remaining front and back satin pieces as lining pieces.

## Step 4 — Side fronts and centre front, side seams of dress bodice

Stitch side fronts to centre front. Press seam allowances onto centre piece. Stitch side seams of dress bodice. Press seam allowances open.

---

## Step 5 — Straps

Fold each strap lengthwise, right side facing in, and stitch along long edge and across one end. Turn strap right side out. Baste straps to upper edge of backs, 9" 9.5" 10" 10.5" 11 cm (3 5/8" 3 3/4" 4" 4 1/4" 4 3/8 ins) from centre back.

---

## Step 6 — Lining seams

Stitch lining seams. Lay lining right sides together with bodice. stitch upper edges together. Trim allowances and clip at centre front. Turn lining to inside. Baste edges together without turning in.

---

## Step 7 — Basting skirt to bodice

Gather upper edges of skirt and skirt lining to fit lower edge of bodice. for the zip, measure 28 cm (11 1/8 ins) down from the top at back edges and mark. Lay skirt on skirt lining, with wrong side facing right side. Baste together along back edges, above slit mark, and along upper edge. Stitch skirt and lining to bodice. Press seam allowances up.

---

## Step 8 — Zipper

Sew invisible zip to back opening edges. Clip allowances of chiffon at end of slit. Stitch centre back seams of chiffon and lining each separately, stitching each from lower edge to zip opening.

---

## Step 9 — Sewing straps in place

Pin front ends of straps under points of front neck edge. Try on garment. Sew straps in place.

---

## Step 10 — Hem

Press hem allowance to inside, turn in and stitch. Hem lining.

---

## Step 11 — Basting shoulder pieces of chiffon to satin, shoulder pads, sewing "gems" into place

Baste each shoulder piece of chiffon to a satin piece. Stitch each shoulder piece with chiffon to piece without chiffon, right sides together, leaving 5 cm (2 ins) open on long edge for turning. Trim allowances. Turn shoulder pieces right side out and press. Slip shoulder pads into shoulder pieces so that straight edge of shoulder pad lies at short side edge of shoulder piece and rounded edge of shoulder pad lies at long edge. Work from outside to pin shoulder pads in place. Sew seam openings closed. Sew "gems" to shoulder pieces, catching shoulder pads. Pin shoulder pieces to straps, so that front ends of shoulder pieces meet abutting lines on front. Sew shoulder pieces in place by hand.

---

# BurdaStyle

6/2010 Long evening dress with "jeweled" shoulders