

12/2011 Leather Shorts

By: burda style magazine

<http://www.burdastyle.com/projects/122011-leather-shorts>



Leather Shorts burda style magazine patterns FAQ

Materials

Lamm nappa leather

Step 1 — Preparation



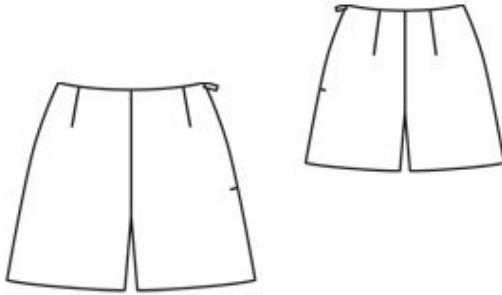
Paper cut for ANSI A (German DIN A4) prints:

This pattern is printed on 8.5 × 11 sheets of plain paper. Do not scale or center pages before printing. Wait until all sheets are printed out before beginning to tape them together. **Do not cut out pattern pieces yet**— Arrange the sheets on a large, hard, flat surface so that they fit together, matching up like numbers and letters (i.e. 6A to 6A). To tape pattern together, fold under the margin of one piece (6A) and tape right against the line of it's matching number/letter (6A).

burda style magazine pattern do not have seam allowance included.

Seam and hem allowances to be added: Seams and edges 1.5 cm (5/8 in).

Step 2 — Cutting out



21 front shorts piece 2x

22 back shorts piece 2x

23 front facing, on a fold 1x

24 back facing, on a fold 1x

Interfacing: Iron to facing pieces.

Step 3 — Darts

Stitch darts. Cut along centres of back darts, approx. 7 cm (23/4 ins) long. Cut along centres of front darts, approx. 4 cm (15/8 ins) long. Press darts open and glue dart allowances down (textile adhesive). Press points of darts flat.

Step 4 — Legs

Stitch right side seam, beginning and ending exactly on marked seam line. Spread seam allowances open and glue down. Stitch inside leg seams. Trim away seam allowance on upper edge of shorts.

Step 5 — Zip

Sew invisible zip to left opening edges, leaving ends of zip tapes extending at upper edge. Turn in top ends of zip tapes and sew in place. Stitch left side seam as far as zip. Spread seams open and glue down.

Step 6 — Legs

Place one leg inside the other, with right sides facing. Stitch centre front and back seam as continuous seam. Spread allowances of centre seam open from each upper edge to beginning of curve and glue down. Do not press seam allowances flat along curve.

Step 7 — Facings

Stitch right side seam of facing, as mirror image of seam on shorts. On narrow edges of facing, turn allowances to inside, 7 mm (1/4 in) wider than marked, and glue down (glue stick). Lay facing under upper edge of shorts, wrong sides facing, matching seams. Seam allowance of facing extends past upper edge of shorts. Stitch ends of facing to zip tapes and to allowances of opening edges, not catching shorts pieces. Glue facing to upper edge of shorts (glue stick). Topstitch close to upper edge of shorts. Trim away extending allowance on upper edge of shorts. Sew inside edge of facing to seams and darts.

Step 8 — Hem

Turn hem allowances to inside and glue in place (textile adhesive).

BurdaStyle

12/2011 Leather Shorts