

# Wrap Dress Plus Size 02/2011

By: burda style magazine

<http://www.burdastyle.com/projects/wrap-dress-plus-size-022011>

---



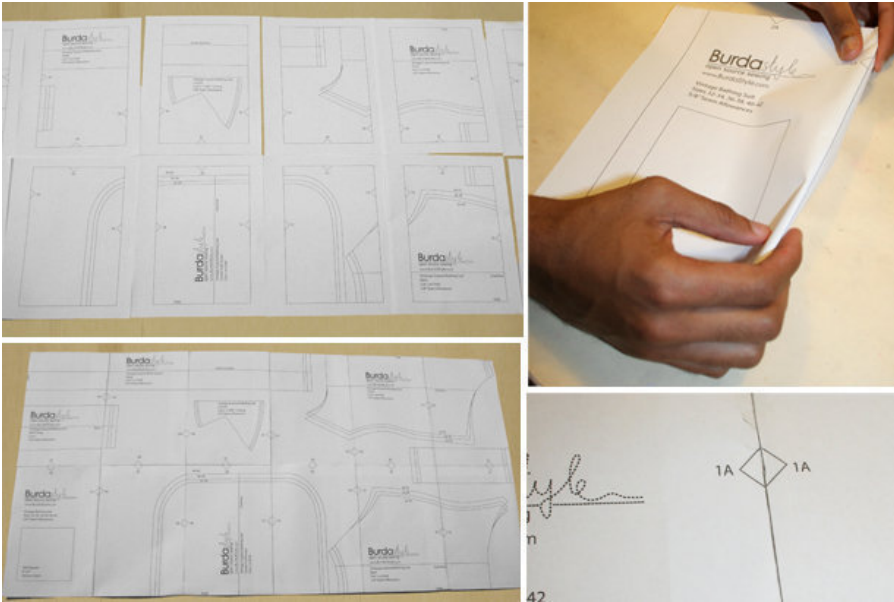
Plus size wrap dress sewing pattern. We love this dress with it's elegant silhouette and clean look. It can also be shortened to make a top. burda style magazine patterns FAQ

## Materials

150 cm (59 in) wide crepe: 2.75, 2.90, 2.90, 3.05, 3.05 m (3 1/8, 3 1/4, 3 1/4, 3 1/2, 3 1/2 yds) Vilene/Pellon G 785.

---

## Step 1 — Preparations



Paper cut for ANSI A (German DIN A4) prints:

This pattern is printed on 8.5 × 11 sheets of plain paper. Do not scale or center pages before printing. Wait until all sheets are printed out before beginning to tape them together. **Do not cut out pattern pieces yet**— Arrange the sheets on a large, hard, flat surface so that they fit together, matching up like numbers and letters (i.e. 6A to 6A). To tape pattern together, fold under the margin of one piece (6A) and tape right against the line of it's matching number/letter (6A).

Trace the pattern pieces from the pattern sheet following the lines and markings for the correct size and the correct style (139). (This pattern also includes pattern pieces, lines and markings for style 138 that should be ignored.)

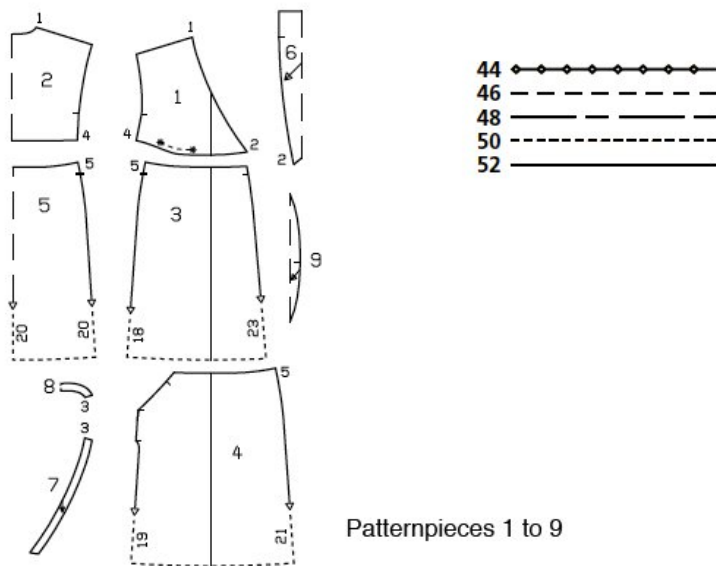
Lengthen pieces 3, 4, and 5 as indicated.

**burda style magazine pattern do not have seam allowance included.**

Seam and hem allowances to be added: Seams and edges 1.5 cm (5/8 in), front edge of right front skirt panel 4 cm (15/8 ins), hem 4 cm (15/8 ins).

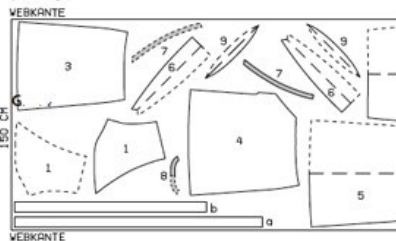
---

## Step 2 — Cutting out

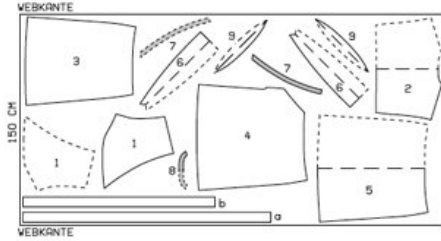


Patternpieces 1 to 9

Cutting layout, 140 cm wide fabric  
Sz: 44



Sz 46 - 52



Webkante = Selvage  
Stoffbruch = Fabric fold

- 1 front 2x
- 2 back, on a fold 1x
- 3 right front skirt panel 1x
- 4 left front skirt panel 1x
- 5 back skirt panel, on a fold 1x
- 6 collar, on a fold 2x
- 7 front neck facing 2x
- 8 back neck facing, on a fold 1x
- 9 armhole band, on a fold 2x

Also draft and cut the following pieces, not included in the pattern sheet:

- a) right tie band, each 7 cm (2 3/4 ins) wide, finished width 3.5 cm (1 3/8 ins).  
Size 44: 160 cm (63 ins) long,  
Size 46: 165 cm (65 ins) long  
Size 48, 50: 170 cm (67 ins) long  
Size 52: 175 cm (69 ins) long,
- b) left tie band, each 7 cm (2 3/4 ins) wide, finished width 3.5 cm (1 3/8 ins).  
Size 44: 120 cm (47 ins) long,  
Size 46: 125 cm (49 ins) long

Size 48, 50: 130 cm (51 ins) long

Size 52: 135 cm (53 ins) long,

Interfacing: Iron onto facing pieces.

---

### Step 3 — Sewing



Stitch shoulder seams of dress bodice. Stitch facing seams. Press seam allowances open.

Collar, Fold collar on fold line, right side facing out. Do not press fold edge. Baste joining edges of collar together to neck edge (seam number 2). Pin facing to neck edge, right sides together, catching collar. Stitch along neck edge. Trim seam allowances. Lay facing up and forward and stitch to seam allowances, close to seam. Turn facing to inside. Baste bottom ends of facing in place. Top stitch fronts 2 cm (3/4 in) from collar joining seam. Lay bottom ends of collar on fronts and baste in place.

Stitch side seams of dress bodice, below marking. Press seam allowances open.

Fold armhole bands on fabric fold line with wrong side facing in do not press. Stitch joining edges of bands together to armhole edges, beginning and ending stitching at top end of side seam and not catching side seam allowance. Press seam allowances away from bands. Top stitch fronts and back 5 mm (3/16 in) from

band joining seams, stitching horizontally across lower band ends.

Gather lower edge of fronts, between asterisks, to 7, 7.5, 7.5, 8, 8 cm (2 3/4, 3, 3, 3 1/4, 3 1/4 ins). Lay right front on left front, matching centre fronts. Baste lower edges together.

Tie bands, Fold each tie band lengthwise, right side facing in. Stitch along long edge and across one end of each. Trim seam allowances. Turn tie bands right side out and press.

Stitch side seams of skirt, leaving slit for tie band in right side seam. Press seam allowances open and press slit edges to wrong side.

Pin one tie band to front edge of right front skirt panel, above marking (allowance on upper skirt edge extends), and stitch to seam line of front edge. Stitch end of band to seam allowance.

Work a mitred corner at front corner of hem on right front skirt panel: Lay hem allowance and allowance on right front edge to outside and stitch a diagonal seam. Trim allowances of mitring seam to 5 mm (3/16 in) wide and press open. Turn allowances on hem and front edges to inside and sew in place by hand.

Press allowance on side edge of left front skirt panel to inside, from hem edge to bottom marking, and press allowance on slanted edge to inside. Turn edges of these allowances under, by half width, and stitch in place. Stitch other tie band under top of slanted edge on left front skirt panel so that it lies even with marked upper skirt edge and seam allowance of upper skirt edge extends.

Lay right front skirt panel on left front skirt panel, with wrong side facing right side, matching centers. Baste upper edges together. Pin side edge of left front skirt panel to side seam, on inside, and stitch to seam allowance.

Stitch skirt to dress bodice. Press seam allowances up.

---

**BurdaStyle**

Wrap Dress Plus Size 02/2011