

5/2010 Denim button-down dress

By: burda style magazine

<http://www.burdastyle.com/projects/52010-denim-button-down-dress>

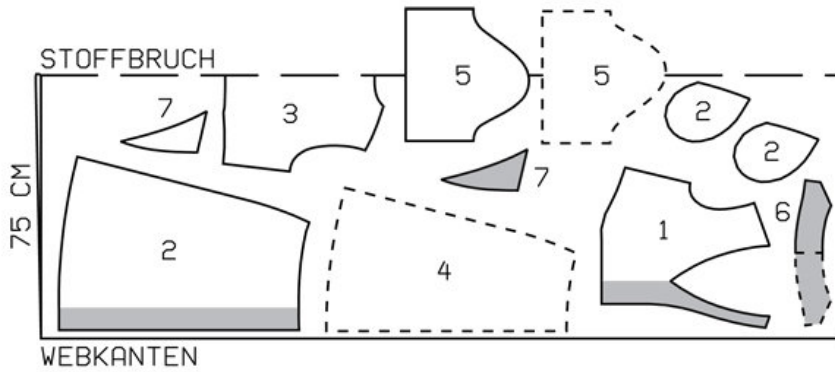


Denim button-down dress burda style magazine patterns FAQ

Materials

Denim

Step 1 — Preparation



137 44-48

Trace the pattern pieces from the pattern sheet. Trace the pocket piece from piece 2 as a separate pattern piece — it is the same for all sizes.

The buttonholes on piece 1 are marked for size 44. For sizes 46 — 52, mark the top buttonhole the same distance from neck edge as for size 44. The bottom buttonhole is in the same place for all sizes. Space the other buttonholes evenly in between. Lay pieces 1 and 2 together. Measure the spacing between the buttonholes on piece 1 and mark the buttonholes on piece 2 with the same spacing.

Seam and hem allowances:

Seams and edges 1.5 cm (5/8 in), hem 4 cm (15/8 ins).

Step 2 — Cutting Out



- 1 front 2x
- 2 front skirt panel 2x
- 3 pocket piece 4x
- 4 back, on a fold 1x
- 5 back skirt panel 2x
- 6 sleeve 2x
- 7 collar, on a fold 2x
- 8 lapel 4x

Interfacing: See pattern layout. Interface undercollar and lower lapel pieces.

Step 3 — Front darts

Stitch front darts. Trim dart allowances to 1 cm (3/8 in) wide, neaten and press to centre. Stitch back darts and press to centre.

Step 4 — Side Seams and Shoulder Seams

Stitch side seams and shoulder seams of bodice. Press seam allowances open.

Step 5 — Collar pieces

Stitch collar pieces right sides together along outer edges, from seam number 2. Begin and end stitching at narrow edges, exactly on seam line of joining edge. Trim seam allowances. Turn collar right side out and press. Lay 2 lapel pieces each right sides facing. Stitch lapel -pieces together along outer edges, from marking, stitching across seam allowances of joining edge exactly at bottom point. Trim seam allowances, trimming corners diagonally. Do not yet turn lapels right side out. Lay ends of collar between lapel pieces. Stitch ends of top collar and undercollar each to upper edges of lapels. Press seam allowances open. Turn lapels right side out. Press edges. Topstitch 7 mm (1/4 in) from edges of lapels and collar. Baste joining edges of lapels and collar together to neck edge (seam number 3).

Step 6 — Stitching self-facings to collar

Turn front self-facings to outside and stitch to neck edge, over collar. Stitch remainder of collar to back neck edge, from ends of facing. Turn facings to inside. Neaten seam allowances of back collar joining seam together and press down.

Step 7 — Sleeve Seams

Stitch sleeve seams. Press lower edges of sleeves to inside on turn-up fold line and stitch. Turn up lower edges of sleeves, about 4.5 cm (17/8 ins) wide. Sew turn-ups to sleeve seams.

Step 8 — Sleeve Caps

Set in sleeves, easing sleeve caps.

Step 9 — Centre back seam and side seams of skirt

Stitch centre back seam and side seams of skirt, not stitching across pocket openings.

Step 10 — In-seam pockets

Pin pocket pieces right sides together with seam allowances of pocket opening edges and stitch in place, directly along marked seam lines. Press pocket pieces forward and stitch together.

Step 11 — Stitching skirt to bodice

Stitch skirt to bodice, laying facings of bodice out flat again. Press seam allowances of skirt joining seam open. Lay facings to inside and press edges.

Step 12 — Facings

Unfold facings at hem. Press hem allowance to inside and stitch 3 cm (1 1/4 ins) wide. Lay facings to inside again and sew to hem allowance, skirt joining seam, and shoulder seams.

Step 13 — Topstitch collar joining seam

Topstitch 7 mm (1/4 in) from front edges and topstitch this distance from collar joining seam, as far as shoulder seam.

Step 14 — Buttonholes

Work buttonholes in right front.

BurdaStyle

5/2010 Denim button-down dress