

Starburst Skirt 05/2012

By: burda style magazine

<http://www.burdastyle.com/projects/starburst-skirt-052012>



Skirt sewing pattern. This high-waisted jersey skirt has pleats along the side that give a gorgeous starburst effect.

Materials

Ponte jersey, width: 150 cm (59 ins) length: Size 34, 36: 1.15 m (1 3/8 yds) Size 38: 1.30 m (1 1/2 yds) Size 40: 1.35 m (1 5/8 yds) Size 42: 1.40 m (1 5/8 yds) Size 44: 1.45 m (1 3/4 yds)

Step 1 — Preparations



This pattern is printed on 8.5 × 11 sheets of plain paper. Do not scale or center pages before printing. Wait until all sheets are printed out before beginning to tape them together. **Do not cut out pattern pieces yet**— Arrange the sheets on a large, hard, flat surface so that they fit together, matching up like numbers and letters (i.e. 6A to 6A). To tape pattern together, fold under the margin of one piece (6A) and tape right against the line of it's matching number/letter (6A).

Trace the pattern pieces from the pattern sheet following the lines and markings for the correct size and the correct style (113C). (This pattern also includes pattern pieces, lines and markings for style 113A+B that should be ignored.)

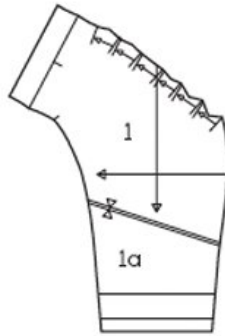
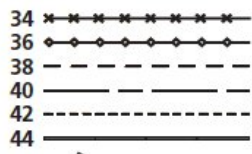
Tape or glue pieces 1 and 1a together on the joining lines. The pleat arrows on piece 1 are marked for size 34. For the other sizes, remark the pleat arrows according to the size lines.

burda style magazine pattern do not have seam allowance included.

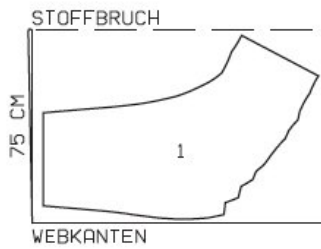
Seam and hem allowances to be added: Seams and edges 1.5 cm (5/8 in), hem 4 cm (1 5/8 ins).

Step 2 — Cutting out

Pattern piece 1

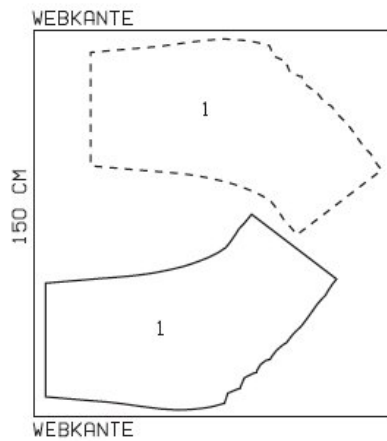


Jersey fabric, 150 cm width.
Sz. 34, 36



Stoffbruch = fold
Webkanten = selvage

Sz. 38 - 44



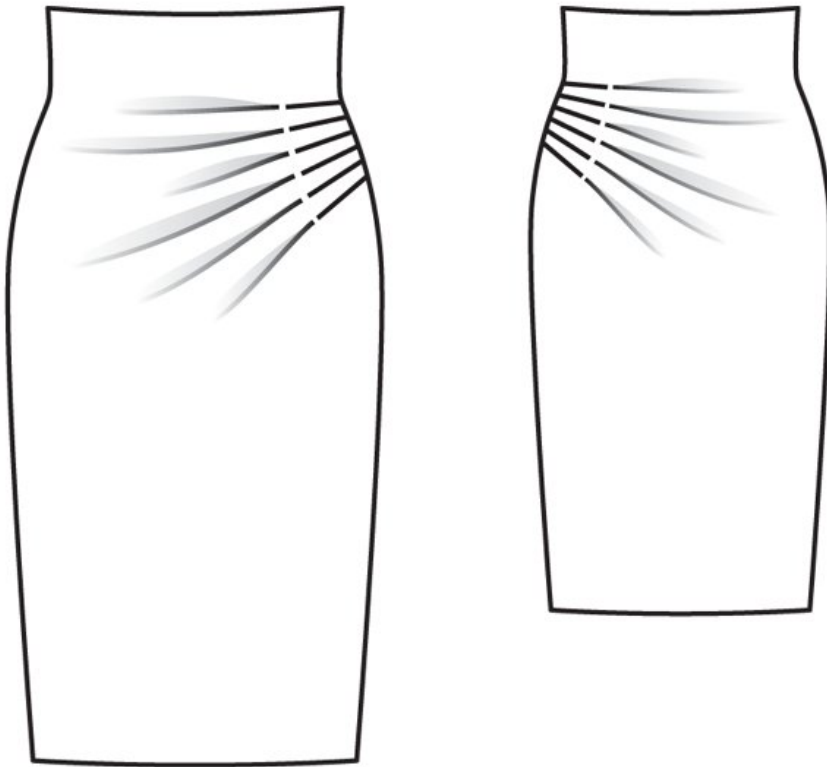
1 skirt panel 2x

(Finished measurements:

Skirt length: 81 cm (32 ins)

Upper edge of skirt sits 9 cm (3 5/8 ins) above waist)

Step 3 — Sewing



Work from inside to stitch pleats in skirt panels, from side edge to arrow mark. Press pleats in direction of arrows and baste to side edges.

Lay the two skirt panels right sides together. Line up pin and stitch side seams on skirt. Press seam allowances open. Neaten the seam allowances with zigzag or overlock stitching.

Press hem allowance to inside. Work from right side and use the twin needle to stitch hem 3 cm (1 1/4 ins) from lower edge.

Turn self-facing on upper edge to inside and press edge. Sew lower facing edge to seams. Sew hem in place by hand.

BurdaStyle

Starburst Skirt 05/2012