

Maternity Pants 02/2012

By: burda style magazine

<http://www.burdastyle.com/projects/maternity-pants-022012>

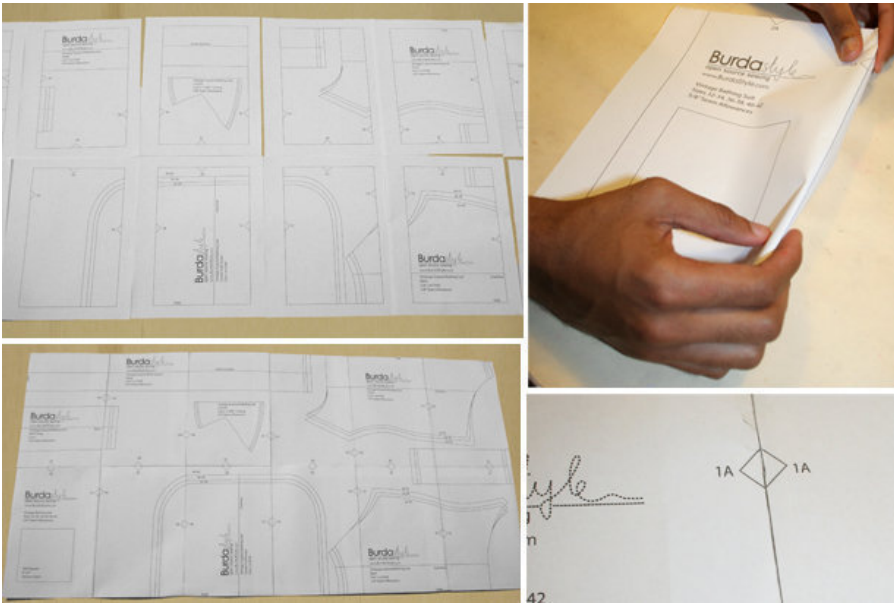


Maternity Pants. burda style magazine patterns FAQ

Materials

Cotton gabardine with widthwise stretch, fabric width: 140 cm (55 ins), length: Size 36 – 40: 1.10 m (1 1/4 yds) Size 42 – 44: 1.40 m (1 5/8 yds) Stretch jersey, 150 cm (59 ins) wide, for the waistband: 0.85 m (1 yd) for all sizes.

Step 1 — Preparations



Paper cut for ANSI A (German DIN A4) prints:

This pattern is printed on 8.5 × 11 sheets of plain paper. Do not scale or center pages before printing. Wait until all sheets are printed out before beginning to tape them together. **Do not cut out pattern pieces yet**— Arrange the sheets on a large, hard, flat surface so that they fit together, matching up like numbers and letters (i.e. 6A to 6A). To tape pattern together, fold under the margin of one piece (6A) and tape right against the line of it's matching number/letter (6A).

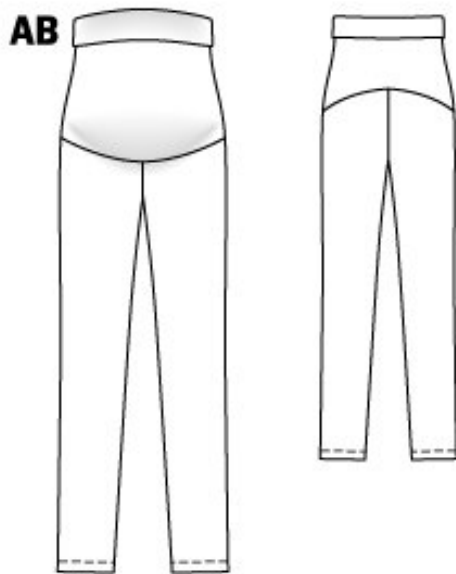
Trace the pattern pieces from the pattern sheet. Lengthen pieces 21 and 22 as indicated.

Burda sizes 36, 38, 40, 42, 44. The size chart for maternity clothes is the standard women's size chart. Compare your own measurements, except for waist measurement, with the size chart to determine your size.

burda style magazine pattern do not have seam allowance included.

Seam and hem allowances to be added: Seams and edges 1.5 cm (5/8 in), hem 4 cm (1 5/8 ins).

Step 2 — Cutting out



Cotton gabardine:

21 front trouser piece, cut 2x

22 back trouser piece, cut 2x

Jersey:

23 front waistband, cut on a fold 1x

24 back waistband, cut on a fold 1x

Step 3 — Sewing

Stitch side seams and inside leg seams. Press seam allowances open. Pull one trouser leg into the other, right sides facing each other. Stitch centre front and centre back crotch seam as one continuous seam. Press seam allowances open, from upper edge to beginning of crotch curve, but do not press allowances flat along crotch curve.

Stitch side seams of waistband. Fold waist band along the fold line and press, wrong side facing in. Stitch waist band edges together with the upper edge of trousers, stretch the waistband to match. Neaten edges of seam allowances and press allowances down.

Press hem to inside, turn edge under to 2 cm (3/4 in) wide, and stitch.

BurdaStyle

Maternity Pants 02/2012