

# 07/2011 Oversized top

By: burda style magazine

<http://www.burdastyle.com/projects/072011-oversized-top>

---



Oversized top burda style magazine patterns FAQ [Updated 1/17/2012] â— Please note that the instructions for this project have been revised.

## Materials

Crpe de chine

---

## Step 1 — Preparation



Paper cut for ANSI A (German DIN A4) prints:

This pattern is printed on 8.5 × 11 sheets of plain paper. Do not scale or center pages before printing. Wait until all sheets are printed out before beginning to tape them together. **Do not cut out pattern pieces yet**— Arrange the sheets on a large, hard, flat surface so that they fit together, matching up like numbers and letters (i.e. 6A to 6A). To tape pattern together, fold under the margin of one piece (6A) and tape right against the line of it's matching number/letter (6A).

Trace the pattern pieces from the pattern sheet. Trace piece 22 twice from the pattern sheet, noting different lines for right and left neck edges. Glue or tape right and left pieces 22 together at the center.

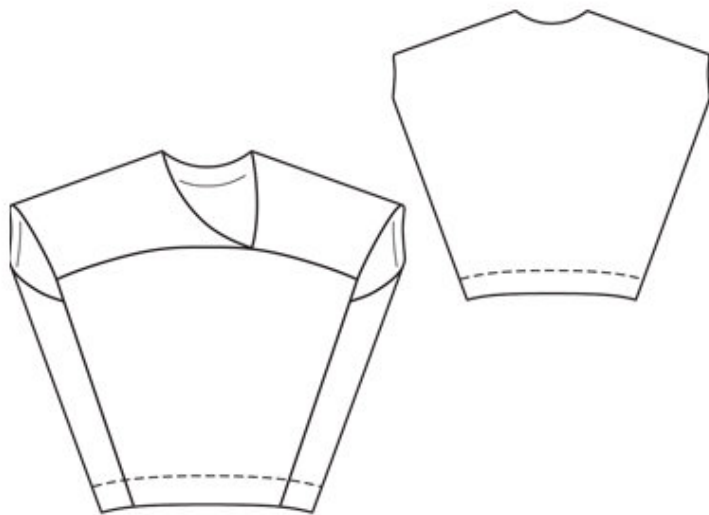
Seam and hem allowances:

**burda style magazine pattern do not have seam allowance included.**

Seam and hem allowances to be added: Seams and edges 1.5 cm (5/8 in), armhole edges 3 cm, hem 5 cm (2 ins) (flare hem allowances).

---

## Step 2 — Cutting out



Main fabric:

Pattern piece number 21 – front piece, cut on fold x2

Pattern piece number 22 – back piece, right and left pieces glued together, cut x1

Pattern piece number 23 – neck facing, cut x1

Vilene bias tape/stay tape: Iron to wrong side of neck edge

---

### Step 3 — Neck edge

Neaten inside edge (the longer side) of the neck facing with overlock stitch or zigzag. Pin and stitch neck facing right sides together with neck edge on back piece (pattern piece 22). Press seam allowance open and then trim one of the seam allowances to about half the width. Turn facing up and make a top stitch on the facing close to the seam, stitching the facing to both seam allowances. Turn facing to inside and press the edge. To make the inside edge of facing look neater you can fold in the edge that is overlocked or zigzagged, press and make a top stitch to hold it in place. After that you can tack the facing in place at a few spots, if you feel it is necessary. Just make sure your stitch does not appear on the front.

---

### Step 4 — Yokes

Stitch the integrated yoke on the back piece to the front piece, with neck opening edges meeting at the marking (left front half). Neaten seam allowances together by overlock or zigzag seam and press down.

---

## Step 5 — Side Seams

Neaten the seam allowances of back armhole edges by zigzag or overlock, then do the same with front, up to edge of hem. Press allowances on back armhole edges to inside, approx. 20 cm (8 in) long, and tack to side edges. Stitch side seams below marking at seam number 2, flaring stitching outward on hem allowance. Press seams open and press allowances on front armhole edges to inside. Neaten allowances of back piece. Sew allowances of armhole in place by hand.

---

## Step 6 — Hem

Press allowance to inside and stitch 4 cm (1 5/8 in) from lower edge.

---

**BurdaStyle**

07/2011 Oversized top