

Strapless Jumpsuit 04/2012

By: burda style magazine

<http://www.burdastyle.com/projects/strapless-jumpsuit-042012>



This is the perfect summer jumpsuit and can be worn anywhere from the beach to strolling in the park. It is a comfy yet stylish garment that features an elasticated waist casing and upper edge. You could even add straps for more support.

Step 1 — Preparations



This pattern is printed on 8.5 × 11 sheets of plain paper. Do not scale or center pages before printing. Wait until all sheets are printed out before beginning to tape them together. **Do not cut out pattern pieces yet**— Arrange the sheets on a large, hard, flat surface so that they fit together, matching up like numbers and letters (i.e. 6A to 6A). To tape pattern together, fold under the margin of one piece (6A) and tape right against the line of it's matching number/letter (6A).

Trace the pattern pieces from the pattern sheet following the lines and markings for the correct size and the correct style (110). (This pattern also includes pattern pieces, lines and markings for style 109 that should be ignored.) Trace pocket piece from piece 5 as a separate pattern piece it is the same for all sizes.

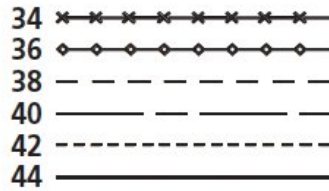
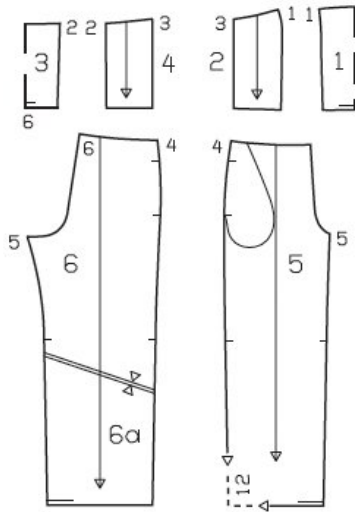
burda style magazine pattern do not have seam allowance included.

Seam and hem allowances to be added:

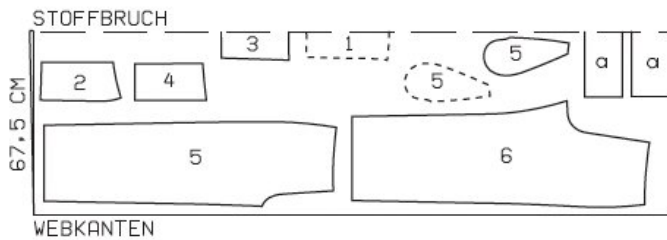
Seams and edges 1.5 cm (5/8 in), horizontal section seam 2 cm (3/4 in), hem 3 cm (1 1/4 ins).

Step 2 — Cutting Out

Pattern Pieces 1-6



Cut on a double layer of fabric as shown in the diagram. Use fabric with a width of 134cm



Stoffbruch = fabric fold
Webkante = selvage

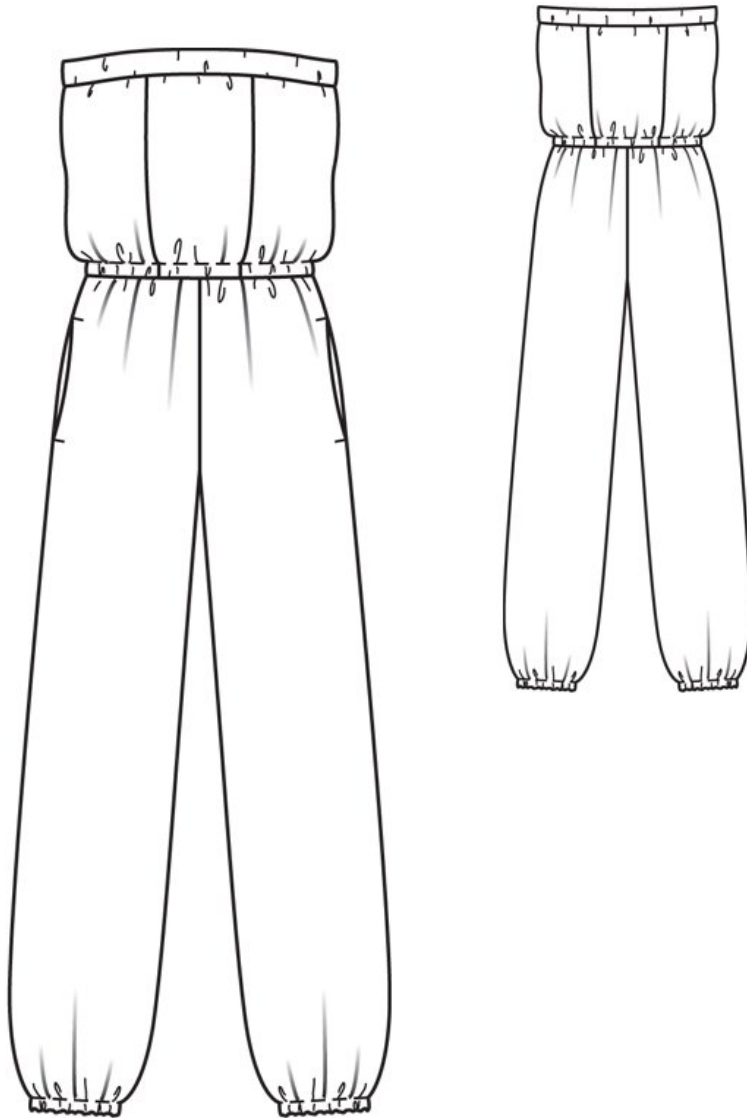
Georgette/jersey:

- 1 centre front, on a fold 1x
- 2 side front 2x
- 3 centre back, on a fold 1x
- 4 side back 2x
- 5 front trouser piece 2x
- pocket piece 4x
- 6 back trouser piece 2x

Draft the following pattern pieces not included in the pattern:

- a) 2 bands,
- length: 46.5 48 50 51.5 53.5 55.5 cm (18 1/4 19 19 3/4 20 3/8 21 1/8 ins)
- width: 14 cm (5 1/2 ins)

Step 3 — Sewing



Stitch section seams on front and back. Press seam allowances toward centre front and centre back. Stitch side seams. Press seam allowances onto back.

Stitch band pieces together (will match up with right side seam) and press seam allowances open. Fold band in half lengthwise, with wrong side facing in, and press. Stitch narrow edges of folded band together (which will match up with left side seam), leaving 3.5 cm (1 1/2 ins) open, from fabric fold, to the insert elastic. Press seam allowances open.

Stitch band edges together to upper front and back edge. Press seam allowances up onto band. Fold band half to inside and baste inside edge in place. Topstitch band close to joining seam. Pull the 3 cm (1 1/4 ins) wide elastic into band. Sew ends of elastic together, to a circumference of:
77 81 85 89 93 97 cm (30 1/2 32 33 1/2 35 36 3/4 38 1/4 ins).

Stitch side seams of trousers right sides together, not stitching across pocket openings.

Inseam pockets: Work from inside to pin pocket pieces to seam allowances of pocket opening edges, right sides facing. Stitch pockets in place, directly along marked seam lines. Above pocket openings, stitch pocket pieces in place close to seams. Press pocket pieces forward and stitch together. Baste upper pocket edges in place.

Stitch inside leg seams, right sides together, for both of the legs. Leave the hem allowance open at bottom of leg seams (for inserting elastic). Turn one of the legs right side out and put one leg into the other, right sides together, matching the crotch points. Stitch centre front and back crotch seam as continuous seam starting at waistlines, leaving allowance at upper back edge open, to insert elastic. Pull legs apart again and press seam open, from upper edges to beginnings of curve. Do not press allowances flat along the curve.

Stitch bodice to upper edge of trousers. Neaten allowances together, press up, and stitch as marked, to form casing. Pull the 1 cm (3/8 in) wide elastic into casing. Sew ends together to circumference of:
64 68 72 76 80 84 cm (25 1/4 26 3/4 28 1/2 30 31 1/2 33 ins).

Press hem allowance to inside, turn in to 1.5 cm (5/8 in) wide, and pin. Stitch as marked to form casing. Pull elastic into casing. Sew ends of elastic together to a circumference of:
23.5 24 24.5 25 25.5 26 cm (9 1/4 9 1/2 9 7/8 10 10 1/4 ins).

BurdaStyle

Strapless Jumpsuit 04/2012