

06/2011 Linen button down dress

By: burda style magazine

<http://www.burdastyle.com/projects/062011-linen-button-down-dress>



Linen button down dress burda style magazine patterns FAQ

Materials

Linen

Step 1 — Preparation

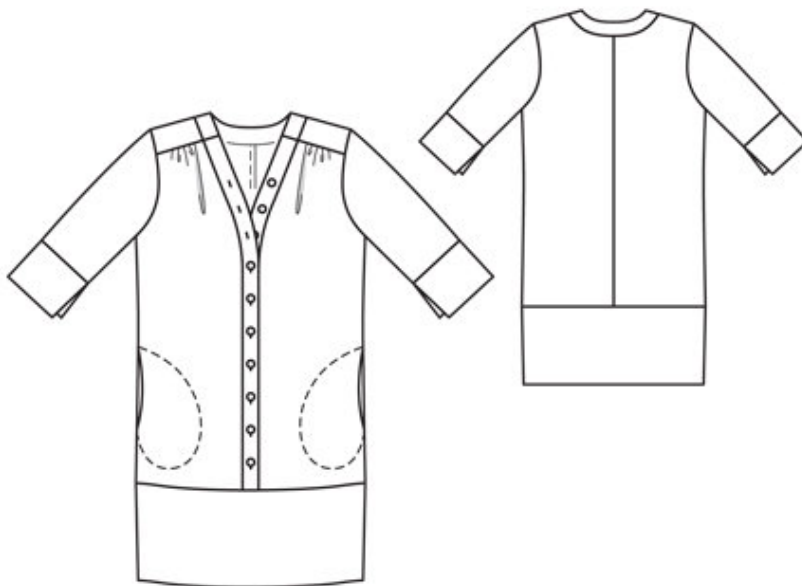
Trace the pattern pieces from the pattern sheet. Follow lines and details for style 105. Trace the pocket piece from piece 1 as a separate pattern piece — it is the same for all sizes.

The pleat arrow on piece 1 is marked for size 38. For the other sizes, mark the pleat arrow accordingly. The buttonholes on piece 2 are marked for size 38. For the other sizes, mark the upper buttonhole down from the corresponding seam mark. The bottom buttonhole is the same for all sizes. Space the other buttonholes evenly in between.

Seam and hem allowances:

Seams and edges 1.5 cm (5/8 in), band joining seams 1 cm (3/8 in).

Step 2 — Cutting out



Linen:

1 front 2x

— pocket piece 4x

2 front band 4x

3 back with front yoke 2x

4 back band, on a fold 2x

5sleeve 2x

6hem band, on a fold 2x

a) 2 sleeve bands, 28 — 29 — 30 — 31 — 32 cm (11 1/8 — 11 1/2 — 12 — 12 1/4 — 12 3/4 ins) long, 20 cm (8 ins) wide, finished width 10 cm (4 ins).

Interfacing: See pattern layout.

Step 3 — Back

Stitch centre back seam. Topstitch left back close to seam. Stitch side seams, but do not stitch across pocket openings. Press seam allowances open.

Step 4 — Yokes

Yoke joining seams: Gather upper front edges between asterisks. Fold pleats in direction of arrows and baste. Stitch integrated yokes of back to upper front edges. Topstitch yokes close to joining seams.

Step 5 — In-seam pockets

Stitch pocket pieces right sides together with seam allowances of pocket opening edges — pocket fabric pieces in front and pocket pieces of main fabric in back. Press pocket pieces onto front and baste to wrong side of front. To stitch pocket pieces in place, pin the paper pattern piece to the dress front and stitch along the edge of the pattern piece.

Step 6 — Band

Stitch shoulder seams of band units (outside and inside units). Stitch outer band to front edges and to neck edge. Press seam allowances onto band. Pin inside band right sides together with outer band. Stitch together along front and lower edges. Turn band right side out. Lay right band on left band, matching centres. Baste bottom ends of bands together.

Step 7 — Hem

Stitch side seams of hem band. Fold band on fold line, wrong side facing in, and press. Stitch outer half of band to lower front and back edges. Press seam allowances onto band. Turn in edge of inside half of band and sew to joining seam. Topstitch band close to joining seam.

Step 8 — Sleeves

Stitch sleeve bands to lower sleeve edges. Press seam allowances of joining seams and of other long edges of bands onto bands. Fold bands in half, right side facing in. Stitch narrow edges closed, up to band joining seam. Do not yet turn bands right side out. Stitch sleeve seams above band joining seams. Turn bands right side out and press. Press — joining seams open. Baste inside edges of bands in place. Topstitch bands close to joining seams.

Step 9 — Sleeve caps

Set in sleeves, easing sleeve caps.

Step 10 — Buttonholes

Work buttonholes in right front band. Also work 3 more buttonholes, along neck band above buttonholes and with the same spacing as the buttonholes, as decoration.

BurdaStyle

06/2011 Linen button down dress