

Drape Neck Top and Dress (Plus Size) 04/2012

By: burda style magazine

<http://www.burdastyle.com/projects/drape-neck-top-and-dress-plus>



Drape neck top and dress sewing pattern This pattern comes in two versions, one top and one dress. Best of all, it is easy to sew!

Materials

Top Style A: Fine stretch jersey, width: 150 cm (59 ins) length: 1.10 1.10 1.20 1.30 1.50 m (1 1/4 1 1/4 1 3/8 1 1/2 1 3/4 yds). Vilene Bias Tape/stay tape. A twin sewing machine needle. Dress Style B: Silk jersey, 140 cm (55 ins), length: 1.60 1.75 1.85 2.60 2.60 m (1 3/4 2 2 1/8 2 7/8 2 7/8 yds). Vilene Bias Tape/stay tape.

Elastic, 2.5 cm (1 in) wide: 1.05 1.10 1.15 1.20 1.25 m (1 1/8 1 1/4 1 3/8 1 3/8 1 1/2 yds). A twin sewing machine needle.

Step 1 — Preparations



Paper cut for ANSI A (German DIN A4) prints:

This pattern is printed on 8.5 × 11 sheets of plain paper. Do not scale or center pages before printing. Wait until all sheets are printed out before beginning to tape them together. **Do not cut out pattern pieces yet**— Arrange the sheets on a large, hard, flat surface so that they fit together, matching up like numbers and letters (i.e. 6A to 6A). To tape pattern together, fold under the margin of one piece (6A) and tape right against the line of it's matching number/letter (6A).

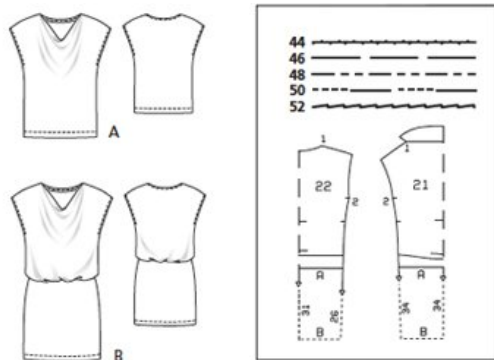
Trace the pattern pieces from the pattern sheet following the lines and markings for the correct size and the correct style; A or B depending on the style you are making.

Lengthen pieces 21 and 22 as indicated.

burda style magazine patterns do not have seam allowance included.

Seam and hem allowances to be added: Seams and edges 1.5 cm (5/8 in), hem 4 cm (1 5/8 ins).

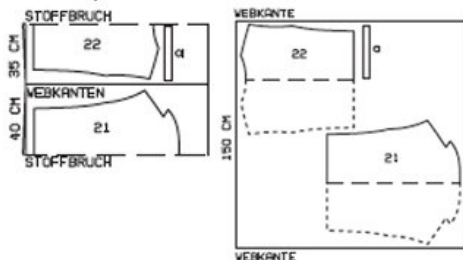
Step 2 — Cutting out



Shirt A, Jersey 150 cm width

Sz. 44, 46

Sz. 48 - 52

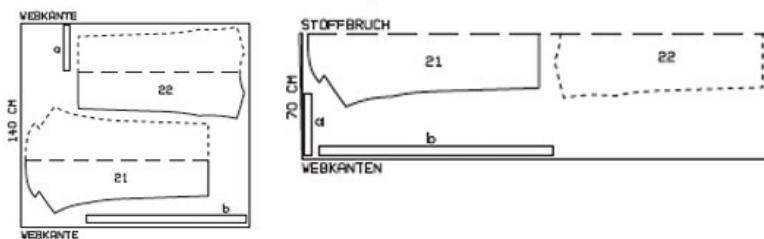


stoffbruch = fabric fold
webkanten = selvage

Dress B, Jersey 140 cm width

Sz. 44 - 48

Sz. 50, 52



Style A, B:

21 front, on a fold 1x

22 back, on a fold 1x

Also draft and cut the following pieces not included on the pattern sheet:

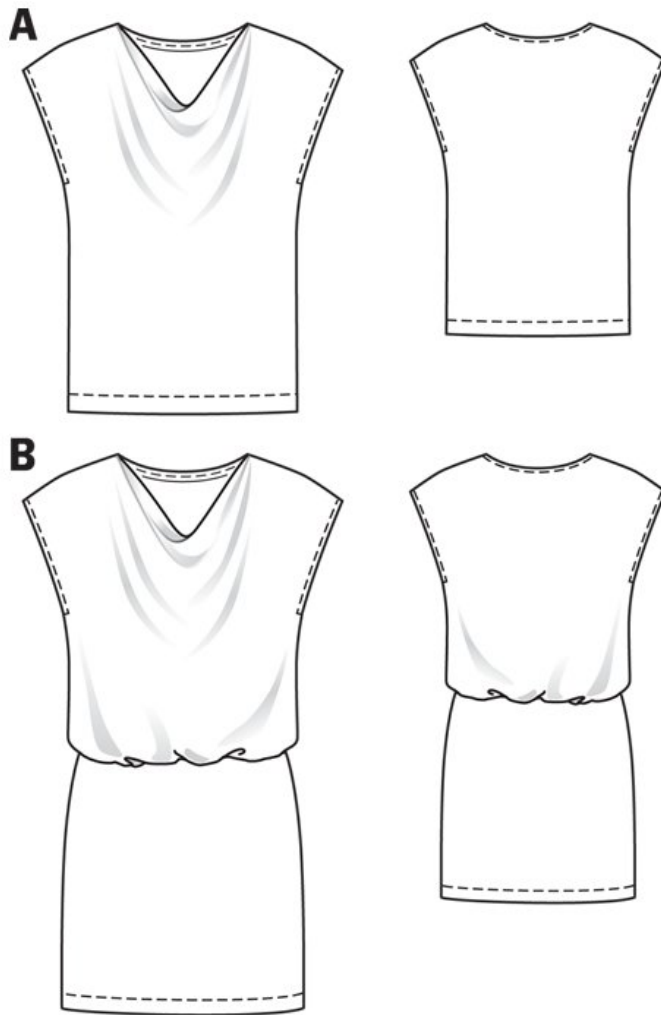
a) Facing strip for back neck edge, 32 33 33 34 35 cm (12 3/4 13 13 13 1/2 13 3/4 ins) long, 4 cm (1 5/8 ins) wide (incl. allowances).

View B only:

b) Facing strip for drawstring casing, 109 113 119 125 131 cm (43 44 1/2 47 49 1/4 51 1/2 ins) long, 5 cm (2 ins) wide (incl. allowances).

Interfacing A, B: Iron Vilene Bias Tape/ stay tape to wrong side of front shoulder seam edges and back neck edge.

Step 3 — Sewing



Note: Stitch seams on stretch fabrics with a special stretch stitch or at a narrow zigzag setting. Stitch hems with a twin machine needle to keep them elastic.

Style A

Back neck edge: Fold facing strip lengthwise, right side facing out, and press. Pin folded facing strip to back neck edge so that fold edge of strip lies on garment piece, 1 cm (3/8 in) past seam line. Stitch along marked neck edge. Trim seam allowances. Turn facing strip to inside and press edge. Topstitch 7 mm (1/4 in) from neck edge.

Pin back shoulder edges to front shoulder edges, right sides facing. Lay self-facing of front on back and pin side facing ends to shoulder edges. Stitch shoulder seams. Turn facing to front. Do not press fold edge. Press shoulder seam allowances forward.

Stitch side seams (seam number 2). Press allowances on armhole edges to inside. Stitch 7 mm (1/4 in) from edges.

Press hem allowance to inside. Work from right side and use the twin needle to stitch 3.5 cm (1 1/2 in) from lower edge, catching the hem.

Style B

Sew dress as for described for view A. Also sew a casing for elastic.

Elastic casing: Press narrow ends of casing strip under, 1.5 cm (5/8 in) wide. Neaten long edges. Baste strip to inside of front and back, over marked casing lines. Stitch from right side as marked. Pull elastic into casing and sew ends together to a circumference of 100 104 110 116 122 cm (39 1/2 41 43 1/2 45 3/4 48 ins).

BurdaStyle

Drape Neck Top and Dress (Plus Size) 04/2012