

09/2011 Short Blouse Plus Size

By: burda style magazine

<http://www.burdastyle.com/projects/092011-short-blouse-plus-size>



Short Blouse plus size sewing pattern. burda style magazine patterns FAQ

Materials

Blouse linen

Step 1 — Preparation



Paper cut for ANSI A (German DIN A4) prints:

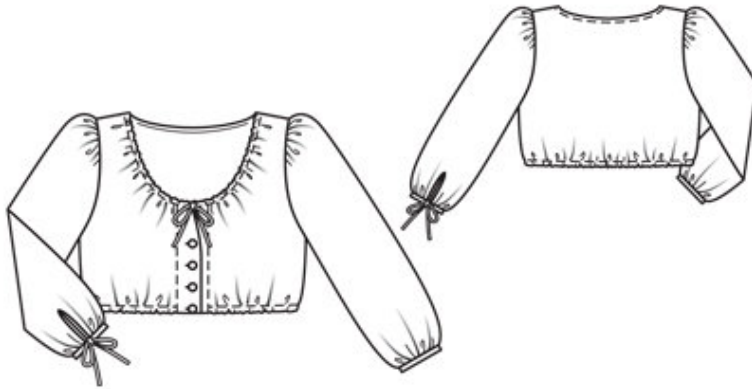
This pattern is printed on 8.5 × 11 sheets of plain paper. Do not scale or center pages before printing. Wait until all sheets are printed out before beginning to tape them together. **Do not cut out pattern pieces yet**— Arrange the sheets on a large, hard, flat surface so that they fit together, matching up like numbers and letters (i.e. 6A to 6A). To tape pattern together, fold under the margin of one piece (6A) and tape right against the line of it's matching number/letter (6A).

burda style magazine pattern do not have seam allowance included.

Seam and hem allowances to be added: Seams and edges 1.5 cm (5/8 in).

see example here: <http://www.burdastyle.com/projects/072011-jumpsuit/instructions/1>

Step 2 — Cutting out



21 front 2x

â—'â—' front facing 2x

22 back, on a fold 1x

23 sleeve 2x

a) 2 drawstring bands (neck edge), 50 â— 50 â— 52 â— 52 â— 54 cm (19³/₄ â— 19³/₄ â— 20¹/₂ â— 20¹/₂ â— 21¹/₄ ins) long, 3 cm (1¹/₄ ins) wide (incl. allowances).

b) bias strip for neck edge, a total of 94 â— 97 â— 101 â— 104 â— 108 cm (37 â— 38¹/₄ -39³/₄ â— 41 â— 42¹/₂ ins) long, 4 cm (1⁵/₈ ins) wide (incl. allowances),

c) 2 binding strips for sleeve vents, 17 cm (6³/₄ ins) long, 3 cm (1¹/₄ ins) wide (incl. allowances),

d) 2 sleeve bands, 28 â— 29 â— 29 â— 30 â— 30 cm (11¹/₈ â— 11¹/₂ â— 11¹/₂ â— 12 â— 12 ins) long, 2 cm (3/4 in) wide, finished width 1 cm (3/8 in),

e) 2 drawstring bands (sleeves), 50 cm (20 ins) long, 3 cm (1¹/₄ ins) wide (incl. allowances).

Step 3 — Side seams

Stitch side seams and shoulder seams. Neaten seam allowances together and press onto back.

Step 4 — Hem

Turn hem allowance to inside, turn in to half the width, baste, and press. Topstitch lower edge of blouse as marked, to form elastic casing, beginning and ending stitching at marked stitching line on front edge. Pull elastic into casing. Baste ends of elastic together for a finished circumference of 82 â— 86 â— 92 â— 98

â— 104 cm (321/2 â— 34 â— 361/4 â— 383/4 â— 41 ins).

Step 5 — Facings

On front facings, press allowances of inside edges to wrong side. Stitch facings right sides together with front edges. Turn facings to inside and press edges. Turn in lower facing edges and sew to hem edge. Topstitch close to front edges and again as marked, catching ends of elastic with topstitching.

Step 6 — Drawstring bands

Turn in ends of drawstring bands. Fold drawstrings lengthwise, right side facing in. Stitch 7 mm (1/4 in) from fold edge. Turn right side out and press.

Step 7 — Bias strips

Press bias strip for neck edge in half lengthwise, right side facing out. Pin folded strip to neck edge so that fold edge lies on garment piece, 1 cm (3/8 in) past seam line. Turn ends of strip back. Stitch along neck edge. Turn bias strip to inside and press edge. Topstitch front neck edge as marked, to form casing. Pull drawstrings into casings. Stitch along shoulder seams, catching ends of drawstrings. Topstitch remaining neck edge.

Step 8 — Sleeve vents

Slash the sleeve vents as marked. Spread the cut edges open to a straight line and stitch to the binding strip, as narrowly as possible. Press the binding strip over the joining seam into the vent, fold under to 5 mm (3/16 in) wide, turn edge under, and baste to joining seam. Mitre binding on inside at bottom of slit. On front edges of vents, turn binding to inside and baste to lower edge. Finished binding width = 7 mm (1/4 in).

Step 9 — Sleeves

Stitch sleeve seams.

Step 10 — Drawstrings

Gather lower sleeve edges to match sleeve bands. Stitch sleeve bands to lower sleeve edges. Trim allowances to 5 mm (3/16 in) wide and press onto sleeve bands. At ends of sleeve band, turn extending allowances under. Fold sleeve bands half to inside, turn in, and baste over joining seam. Topstitch sleeve bands close to joining seam. Pull drawstrings into casings.

Step 11 — Sleeve caps

Set in sleeves, easing sleeve caps.

Step 12 — Buttonholes

Work buttonholes in right front.

BurdaStyle

09/2011 Short Blouse Plus Size