

JJ

By: burdastyle

<http://www.burdastyle.com/projects/jj>



This adorable blouse is the winning entry of our first pattern competition, designed by JJ. It was chosen for its simple yet sophisticated design as well as the patterns adaptability to home sewing. The simple ruffles and delicate puffed sleeves make the top perfect for date night, but the fit and collar make it also perfect to wear to work!

Materials

Japanese cotton, self covered buttons

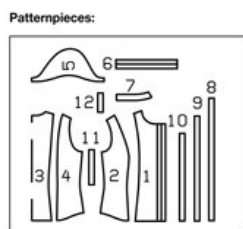
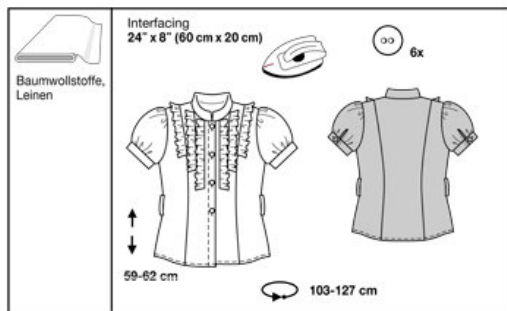
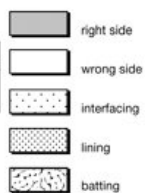
Step 1

**burda Download-Pattern
Blouse 6009 - Instructions**

●●●●
average

semi fitted

		55 ins / 140 cm						
burda sizes		34	36	38	40	42	44	46
yds		1 1/2	1 1/2	1 1/2	1 1/2	1 1/2	1 1/2	1 1/2
m		1.35	1.35	1.35	1.35	1.55	1.55	1.55
		→	→	→	→	→	→	→



PATTERN

- 1 Center front piece 2x
- 2 Side front piece 2x
- 3 Center back piece 1x
- 4 Side back piece 2x
- 5 Sleeve 2x
- 6 Sleeve cuff 2x
- 7 Stand-up collar 2x
- 8 Ruffle I 2x
- 9 Ruffle II 2x
- 10 Ruffle III 2x
- 11 Loop 1x
- 12 Slit facing 2x

Fabrics: Cotton, linen fabrics

Step 2



The patterns can be printed out at the copy shop. If you decide to print them at home, follow the instructions: Paper cut for ANSI A (German DIN A4) prints: The patterns are printed out on 25 sheets with a thin frame. Wait, until all sheets are printed out. Arrange the sheets so that they fit together (see extra page with the overview of the prints). Cut off the single sheets on the upper and right edge along the thin frame lines. Begin with the left lower sheet and then glue the parts in the frame lines together precisely.

Step 3



ADJUST PATTERN SIZES

Select your size according to the Burda-dimension table: Dresses, blouses, jackets and coats according to the bust size, trousers and skirts according to the hip width. Change the pattern if necessary, to fit your measurements if they deviate from the Burda-dimension table. Refer to our "Adjust patterns for mixed sizes" technique

Size 4 to 14 (EU 36 to EU 46)

The button holes of piece 1 are marked according to size 2 (EU 34). For the bigger sizes mark the lowest buttonhole in the same length to the waist sign like size 2 (EU 34). The upper buttonhole is positioned the same for all sizes. The other buttonholes have to be distributed in equal lengths in between the upper and the lowest button hole.

LENGTHENING OR SHORTENING THE PATTERN PIECES ACCORDING TO YOUR SIZE

Our pattern is calculated for a height of 5â€ 6â€ (168 cm). If you are taller or shorter, you may adjust the pattern to fit your size. Choose your size at the lines marked “lengthen or shorten here”. Thus the proper fit is preserved. Make sure that you adjust all pieces of one pattern by the same amount at the same lines.

How to lengthen and shorten pattern pieces:

Cut the pattern pieces along the marked lines.

To lengthen, slide the two halves of the pattern piece as far apart as necessary.

To shorten, overlap the two halves of the pattern piece as far as necessary. Even out the side edges.

Step 4



CUTTING OUT

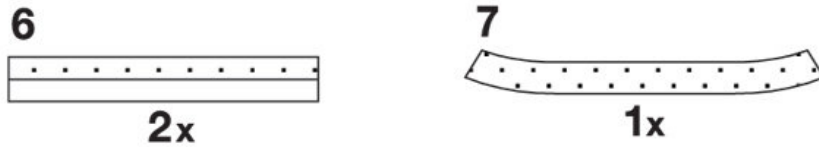
FOLD () means: here is the center of a pattern piece but never a cut edge or a seam. The piece should be cut double, with the fold line forming the centre line. Pattern pieces that are outlined with a broken line in the cutting diagrams are to be placed face down on the fabric. The cutting diagrams on the pattern sheet show how the pattern pieces should be placed on the fabric.

The cutting diagrams show the placement of the pattern on the fabric

For a single layer of fabric, the pattern pieces are pinned to the right side. For double layers of fabric, the right sides are facing and the pattern pieces are pinned to the left side. The pattern pieces that are shown in the cutting diagram, extending over the fold of the fabric, should be cut last from a single layer of fabric.

Step 5

INTERFACING



SEAM AND HEMLINE ALLOWANCES are included on an average:
5/8" (1.5 cm) for all edges and stitches.

Using burda copying paper, transfer the lines and signs of the pattern onto the left fabric side. You will find instructions in the packaging.

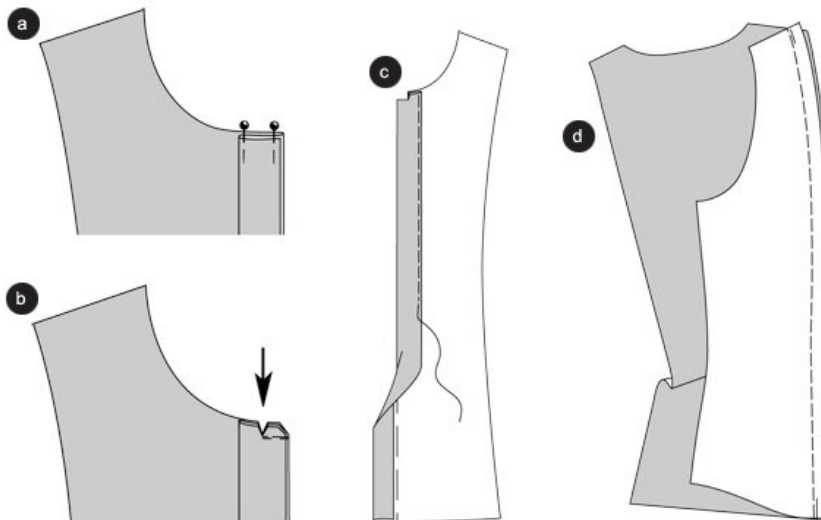
Interfacing

Cut out the interfacing according to the drawing and press it onto the wrong fabric side.

Sewing

While sewing the right fabric sides are facing. Transfer all lines of the pattern onto the the right fabric side using basting stitches.

Step 6



Blouse

Front edges

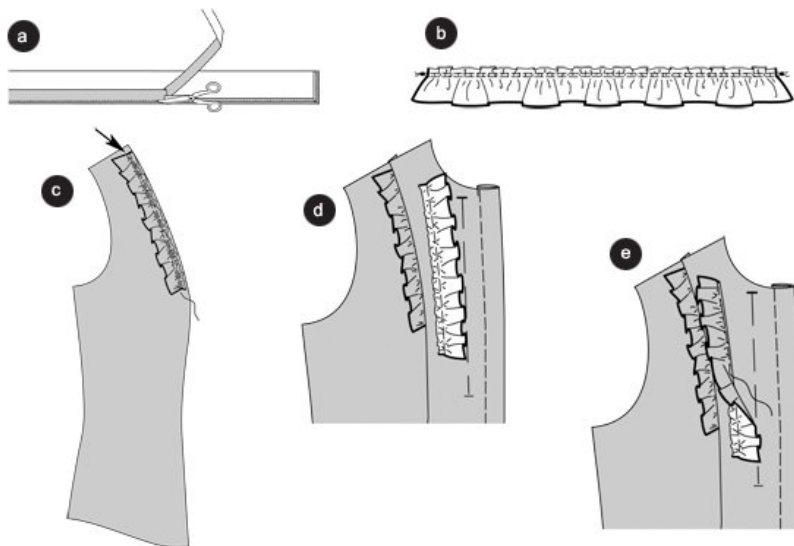
Fold and press the front pieces along the fold line, and fold the front pieces along the facing fold line to the

outside. Stitch the neckline edges on top of each other, starting from the front center to the front edge. Secure seam ends (a). Cut in the allowances at the front center, close to the stitch line (arrow) (b). Fold and pin the facing to the inside, press and stitch narrowly ©.

Back princess seams

Position the back side pieces onto the back center piece, the right sides are facing. Baste the princess seams (seam 2) and stitch. Trim allowances, neaten altogether and press inside the back center piece (d).

Step 7



Ruffle

Fold inside and press the allowances of the narrow ruffle edges and the long ruffle edge. Stitch the edge, using a small and narrowly adjusted zigzag stitches. Cut the overlapping allowances close to the stitch line (a).

TIP: Test it using a piece of waste fabric. Use sewing machine thread or darning cotton. Test the stitch adjustment and the thread tension.

Ruffle III: Double stitch along the long edge, using large stitches. Tighten the under threads to the length of the princess seam, tighten from the top to the cross line. Knot the threads. Distribute the width equally (b).

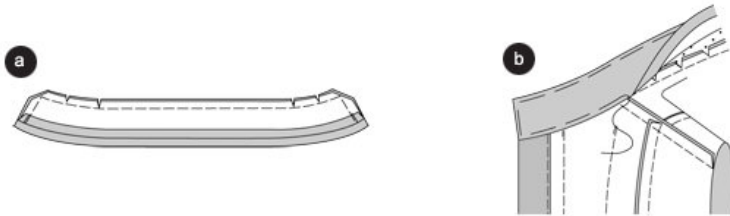
Baste the ruffle III onto the side front piece, starting from the top to the cross line. The allowance of the shoulder seam is overlapping (arrow) ©.

Stitch the front princess seams according to the text and the drawing no. 2 (seam 1), thereby enclosing the ruffle. Trim allowances, neaten altogether and press inside the front center piece.

Ruffle I and II: Trim the allowances of the rough edge to ½" (0.5 cm) and neaten. Double stitch along the edge, ones 1/16" (2mm) and another ¼" (7mm) from the edge according to the text and drawing no. 4. Tighten the under threads of the ruffle to the length of the front piece line where the ruffle will be applied. Knot threads. Distribute the width equally.

Baste the ruffle II onto the side line of the front piece, the right sides are facing, and stitch between the ruffle rows. Press the ruffle towards the side edge (d). Stitch the edge narrowly (e). Stitch the ruffle II in the same way onto the front line.

Step 8



Shoulder seams

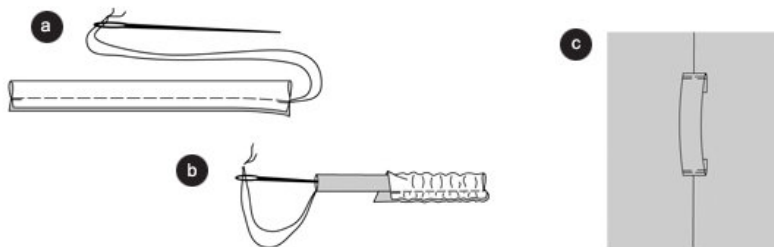
Position the front piece onto the back piece, the right sides are facing., baste shoulder seams (seam 3). The princess seams meet. Neaten the allowances altogether and press inside the back piece.

Stand-up collar

Press the allowances of the lower collar edge (collar without interfacing) to the inside. Pin the collar pieces on top of each other, the right sides are facing. Baste the edges according to the drawing on top of each other, and stitch. Trim the allowances, cut the corners bias. Turn the collar inside out. Baste edges, and press (a).

Pin the collar into the neckline, the right sides are facing (seam 4), the cross lines meet the shoulder seams. Stitch. Trim allowances, cut in the allowances and press inside the collar. Pin the inner half of the collar onto the edge, and stitch narrowly (b).

Step 9



Side seams

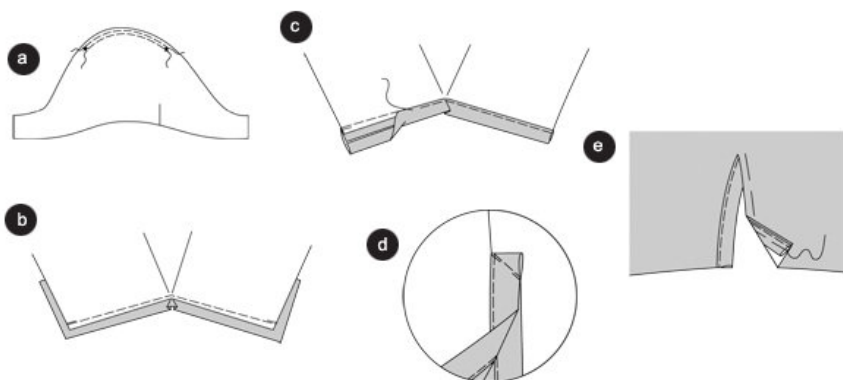
Position the front pieces onto the back piece, the right sides are facing. Baste side seams (seam 5), and stitch. Trim allowances, neaten altogether and press inside the back piece.

Loops

Fold the straps lengthwise, the right fabric side inside. Stitch 1 cm wide along the fold line. Trim allowances. Knot the threads, thread the needle (a) Then move the needle (the needle eye ahead (b) through the strap opening (use a reel inside for easy use). Cut the strap into two pieces. Neaten and fold the ends inside.

Pin the loops onto the marked cross lines of the side seams, and stitch narrowly ©.

Step 10



Sleeves with cuff

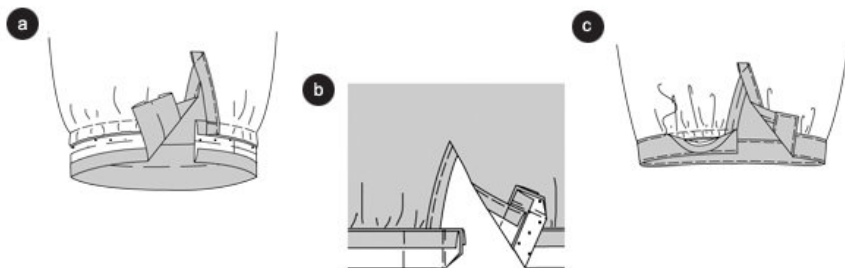
Double stitch the rounding of the sleeve from * to *, using large stitches (a).

Cut in the lower sleeve edge at the mark. Pull the cut edges apart; then pin it onto the slit facing according to the drawing, and stitch. Fold the facing over the edge and press (b).

Fold the half of the facing inside, and baste it along the edge and stitch ©. Fold the slit in a way that the right sides are facing, and stitch the facing at the slit end diagonally according to the drawing (d).

Fold the facing along the front slit edge inside. Press (e).

Step 11

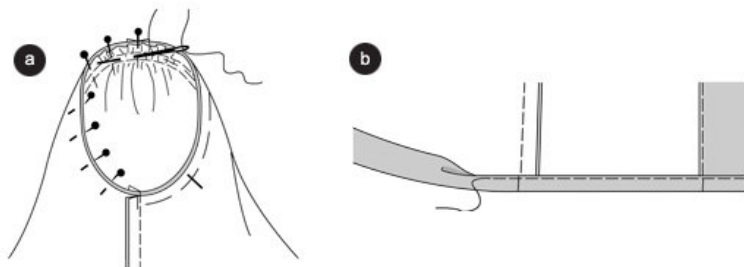


Fold the sleeves lengthwise, the right side inside. Stitch the sleeve seams (seam 6). Neaten the allowances altogether and press towards one side. Bunch the lower sleeve edge (according to the text and drawing no. 11) to the width of the cuff.

Pin the sleeve cuffs onto the lower sleeve edge (seam 7), and stitch. Press the allowances inside the cuff. Fold and press the allowances of the other long edge (a).

Fold the cuff along the fold line, the right side inside. Stitch the narrow sides on top of each other. Trim allowances, cut the corners diagonally. Fold the cuff along the fold line inside, then pin along the seam. Press. Stitch all edges narrowly on the right fabric side, thereby stitching the inner half along the seam (b).

Step 12



Apply sleeves

Bunch the sleeve rounding through slightly tightening the under threads of the stitch lines.

Position the sleeves onto the armhole, the right sides are facing. When you apply the sleeve 4 points are to be considered for the “ perfect fit ” : The cross lines (8) of sleeves and front piece have to meet. The sleeve seams and side seams have to meet. The cross lines of the sleeve rounding have to meet the shoulder seam. The width of the sleeve rounding has to be distributed equally. Pin the sleeve from the side of the sleeve (not from the side of the shoulder), and stitch. Trim allowances, neaten altogether and press inside the sleeve (a).

Hemline

Fold the hemline to the inside and press, fold again and baste. Stitch the seam narrowly (b).

Apply BUTTONHOLES onto the right front piece and the sleeve cuffs. Sew the Buttons by hand.

BurdaStyle

JJ