

Zoe

By: burdastyle

<http://www.burdastyle.com/projects/zoe>



Easy to sew in a couple of hours, and you can combine it in a million different ways. Over jeans or some nice stockings. With a fun T-Shirt underneath or a blouse...whatever your day feels like!

Materials

wool

Step 1

**burda Download-Pattern
Dress 8123 – Instructions**

very easy **fitted**

Sizes	US Eur	55 ins / 140 cm								59 ins / 150 cm							
		6 32	8 34	10 36	12 38	14 40	16 42	18 44	6 32	8 34	10 36	12 38	14 40	16 42	18 44		
Yds	1 1/2	1 1/2	1 1/2	1 1/2	1 1/2	1 1/2	1 1/2	1 1/2	1 1/2	1 1/2	1 1/2	1 1/2	1 1/2	1 1/2	1 1/2		
m	1.25	1.25	1.25	1.25	1.25	1.25	1.25	1.25	1.25	1.25	1.25	1.25	1.25	1.25	1.25		
	*	*	*	*	*	*	*	*	*	*	*	*	*	*	*		

→ with nap * without nap

Interfacing
24" x 26"
(60 cm x 65 cm)

Flannel, light-weight wools, denim fabrics

6, 8 (32, 34): 20" (50 cm)
10 - 18 (36-44): 22" (55 cm)

Pattern pieces:

PATTERN

- 1 Front piece 1x
- 2 back piece 1x
- 3 Front facing 2x
- 4 back facing 2x
- 5 Front skirt 1x
- 6 Back skirt 1x
- 7 Belt loops 4x

Step 2

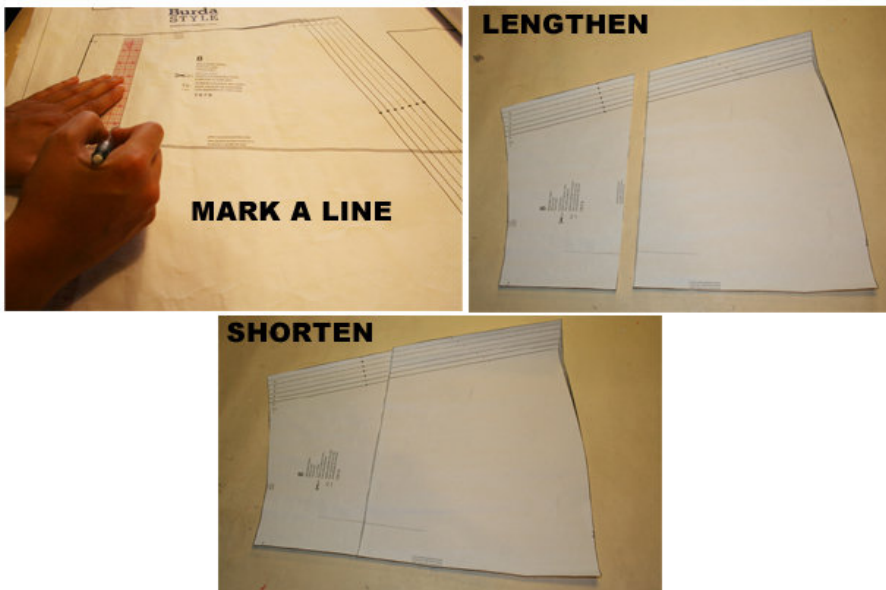


To print the patterns at home, follow the instructions:

Paper cut for ANSI A (German DIN A4) prints:

The patterns are printed out on 24 sheets with a thin frame. Wait until all sheets are printed out. Arrange the sheets so that they fit together (see additional page with the overview of the prints). Fold the single sheets on the upper and right edge along the thin frame lines. Begin with the left lower sheet and then tape the frame lines together precisely.

Step 3



ADJUST PATTERN SIZES

Select your size according to the Burda-dimension table: dresses, blouses, jackets and coats according to the bust size, trousers and skirts according to the hip width. Change the pattern to fit your measurements if they deviate from the Burda-size chart. Cut out the pattern according to your size.

Refer to our â... Adjust patterns for mixed sizesâ... technique

LENGTHENING OR SHORTENING THE PATTERN PIECES

Our pattern is calculated for a height of 5â... 6â... (168 cm). If you are taller or shorter, you can adjust the pattern pieces along the lines marked “lengthen or shorten here”. This way the proper fit is maintained. Always adjust all pattern pieces along the same line to the same degree.

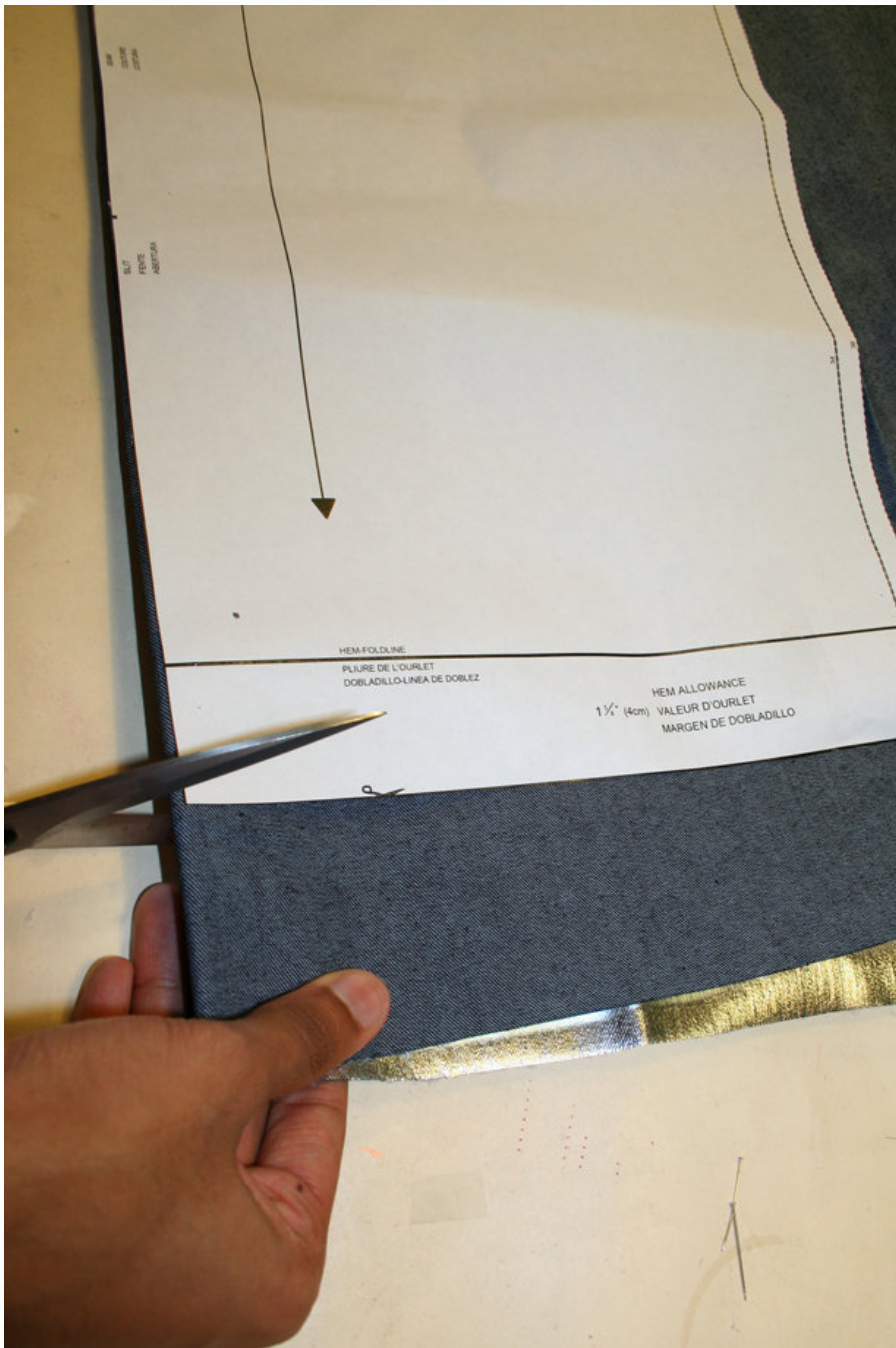
How to lengthen and shorten pattern pieces:

Cut the pattern pieces along the marked lines

To lengthen, slide the two halves of the pattern piece as far apart as necessary.

To shorten, overlap the two halves of the pattern piece as far as necessary. Blend the side edges.

Step 4



CUTTING OUT

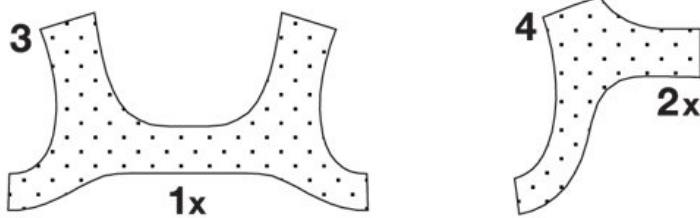
FOLD (â... â... â... â...) means: Cut on the fold, the fold being the center of the pattern piece, but never a cut edge or seam. The piece should be cut double, with the fold line forming the center line. Pattern pieces that are outlined with a broken line in the cutting diagrams are to be placed face down on the fabric. The cutting diagrams on the pattern sheet show how the pattern pieces should be placed on the fabric.

The cutting diagrams show the placement of the pattern on the fabric.

For a single layer of fabric, the pattern pieces are pinned to the right side. For double layers of fabric, the right sides are facing and the pattern pieces are pinned to the wrong side. The pattern pieces that are shown extending over the fold of the fabric in the cutting diagram should be cut last from a single layer of fabric .

Step 5

INTERFACING



SEAM AND HEMLINE ALLOWANCES are included on an average:

1 5/8" (4 cm) for hem, 5/8" (1.5 cm) for all edges and stitches. Using BURDA copying paper, transfer the lines and signs of the pattern onto the wrong side of the fabric. Instructions can be found in the packaging.

Sewing

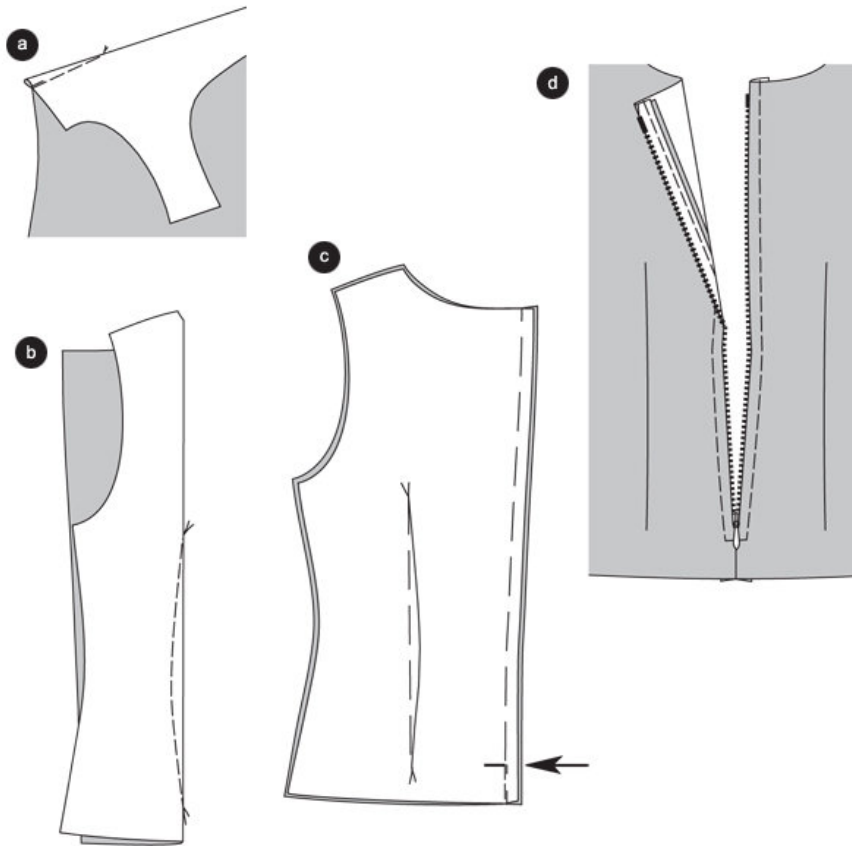
While sewing, the right sides of the fabric are facing.

Transfer all lines of the pattern onto the right side of the fabric using basting stitches.

Interfacing

Cut interfacing according to drawing on left and iron onto the wrong side of the fabric.

Step 6



Dress

Darts

Pin chest darts at the front piece and stitch ending in a narrow tip. Tie thread. Iron darts toward bottom. (a)

Pin waist darts of the back pieces and stitch ending in a narrow tip. Tie thread. Iron darts toward middle. (b)

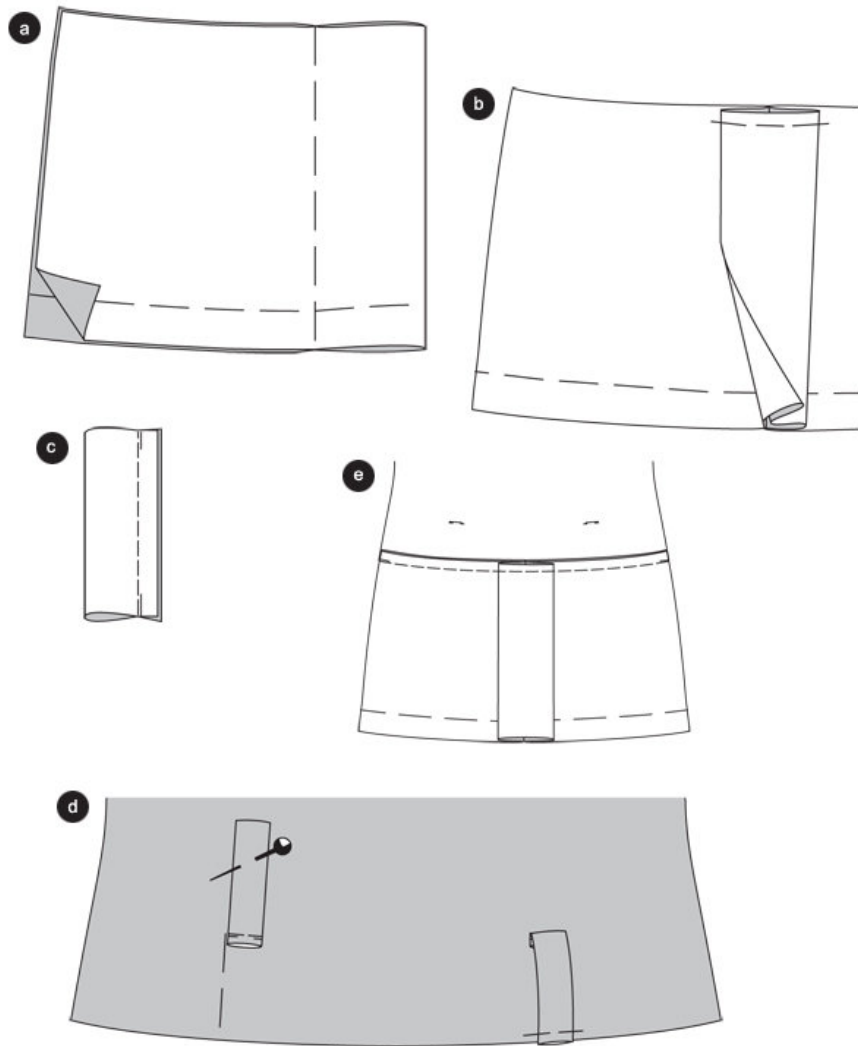
Back Middle Seam

Place back pieces right sides facing, pin middle seam, stitch coming from the slit marking (arrow) going downward. Secure seam ends. Leave slit pinned. Trim seam allowances, fold apart and iron. ©

Zip

Pin zip underneath the slit edges so that the teeth are covered. Stitch zip onto garment with zipper foot. Sizes 36-44: Let zip end overlap at bottom. (d)

Step 7



Front Skirt Piece/ Inverted Pleat

Fold front skirt piece in half, right sides facing. Pin pleat lines (front middle) onto another. (a)

Iron pleat so that the lines that are pinned onto each other hit the middle. Pin pleat to the upper edge. (b)

Loops

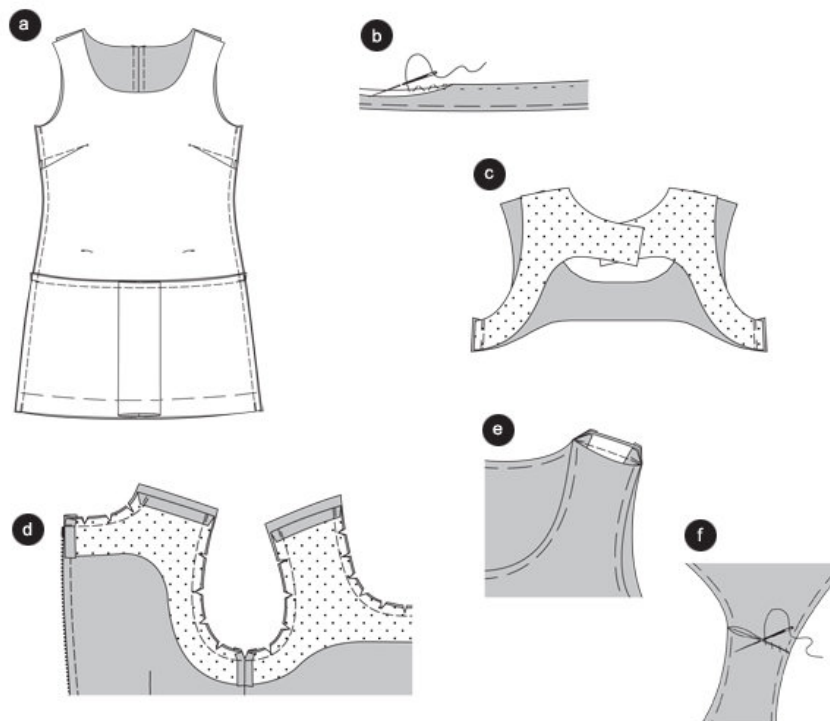
Fold loops at selvage lines, right side inside. Stitch edges onto another, trim seam allowances. Turn loops. Pin edges, iron and stitch neatly. Debaste upper edges. ©

Stitch loops right sides facing onto the upper side of the marked lines of the front and back piece. Secure seam ends. Place loops downward, pin. (d)

Pin Skirt Pieces

9.) Pin front skirt piece onto front bodice piece right sides facing (seam number 1) and stitch. Trim seam allowances, debaste held together and iron into the front piece. Stitch back skirt piece onto back piece in the same way. (e)

Step 8



Side seams

Place front piece right sides facing onto the back piece, pin side seams (seam number 3), skirt base seams meet. Stitch. Trim seam allowances, fold apart and iron. (a)

Seam: Tear basting stitches at pleat

Debaste seam, fold over, iron. Stitch seam by hand loosely. Iron in pleat at seam. (b)

Neckline/ Facing

Place back facings onto front facings right sides facing, stitch side seams (seam number 5). Fold over the seam allowances of the shoulder edges and iron to inside. ©

Pin facing onto the dress, right sides facing, side seams meet. Fold over the back facing's edges at the zip. Pin and stitch the facing to the neckline and arm line edges and stitch. Trim seam allowances. Cut in. (d)

Shoulder Seams

Place front pieces onto back piece right sides facing, stitch shoulder seams (seam number 4), holding in the backwards shoulder edges. Cut the seam allowances diagonally at edges. Pull seam allowances towards the inside, fold apart and iron. (e)

Sew the facing edges at the shoulders against each other by hand. Pin all necklines, iron and stitch neatly. Sew back facing edges onto the zipper bands. (f)

BurdaStyle

Zoe