

# Oversized Shirt Dress 02/2010

By: burda style magazine

<http://www.burdastyle.com/projects/oversized-shirt-dress-022010>

---



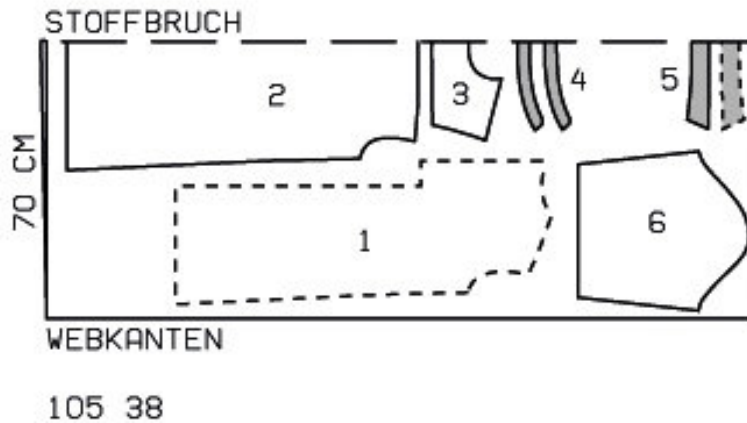
Oversized Shirt Dress

## Materials

checked linen blend

---

## Step 1 — Preparation



Trace the pattern pieces from the pattern sheet. Follow lines and details for style 105.

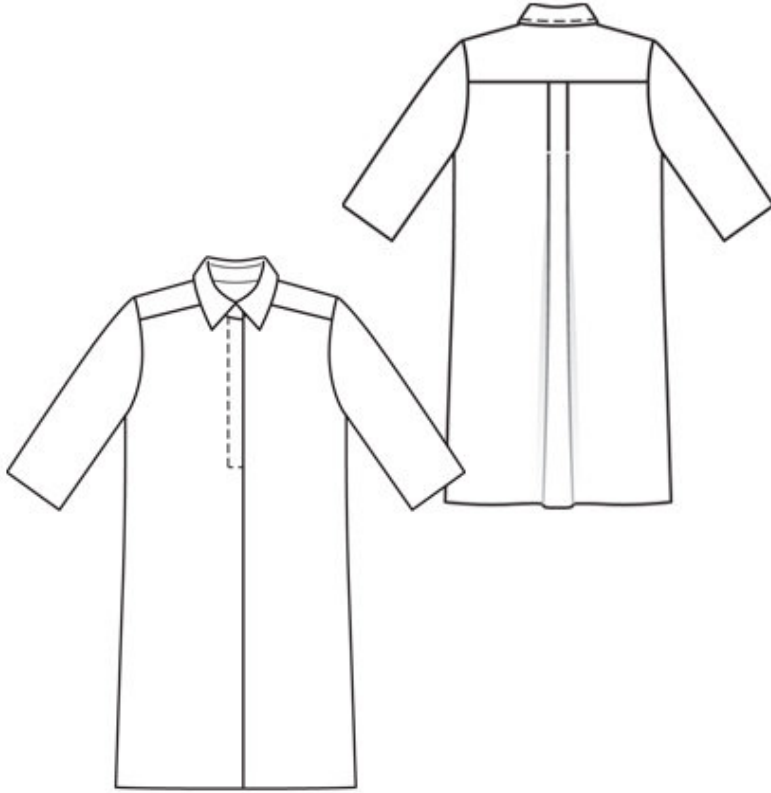
The buttonholes and button markings on piece 1 are for size 38. Mark the top buttonhole for sizes 40 — 46 the same distance from neck edge as for size 38. The bottom is in the same place for all sizes. Space the other buttonholes evenly in between.

Seam and hem allowances:

Seams and edges 1.5 cm (5/8 in), hem and sleeve hems 4 cm (15/8 ins), no allowance at lengthwise edge of front self-facing.

---

## Step 2 — Cutting out



- 1 front 2x
- 2 back, on a fold 1x
- 3 yoke, on a fold 1x
- 4 collar band, on a fold 2x
- 5 collar, on a fold 2x
- 6 sleeve 2x

Interfacing: See pattern layout.

---

### **Step 3 — Bust Darts**

Sizes 42 — 46: Stitch bust darts and press down.

---

### **Step 4 — Put body together**

Lay fronts right sides together, pin seam line of right piece to abutting line on left piece. Stitch from marking downward. Lay fronts flat apart, press seam allowances onto right front. Fold front self-facings to inside on fold line and press. Lay doubled facings to inside and press. Topstitch fronts vertically as marked. Work buttonholes in left front. Topstitch across right front at end of fastening, catching left edge lying underneath.

---

## **Step 5 — Pleats**

Work from inside to stitch pleats in back from upper edge to each pleat mark. Lay pleats in arrow direction, press pleat seams. Baste pleats to upper edge

---

## **Step 6 — Yoke**

Stitch yoke on fronts and on back. Topstitch yoke close to joining seams.

---

## **Step 7 — Side Seams**

Stitch side seams.

---

## **Step 8 — Collar with collar band**

Stitch collar right sides together along outer edges. Trim seam allowances. Turn collar right side out and press. Lay collar band pieces right sides together, catching collar in between. Stitch along front and upper edges of collar band, beginning and ending in front exactly on seam line of joining edge. Turn collar band right side out. Stitch outer collar band piece to neck edge. Press seam allowances onto collar band. Turn in inside collar band and baste over joining seam. Topstitch collar band closely round edges. Work a buttonhole in right end of collar band.

---

## **Step 9 — Sleeves**

Stitch sleeve seams. Press sleeve hem allowances to inside, sew by hand.

---

## **Step 10 — Sleeves**

Set in sleeves eased to fit.

---

## **Step 11 — Hem allowance**

Press hem allowance to inside, sew by hand

---

**BurdaStyle**

Oversized Shirt Dress 02/2010