

# How To Make A Princess Seam Without A Pattern

By: Onnari

<http://www.burdastyle.com/techniques/how-to-make-a-princess-seam>

---



This is a tip on how you can cut a princess seam without using a pattern.

---

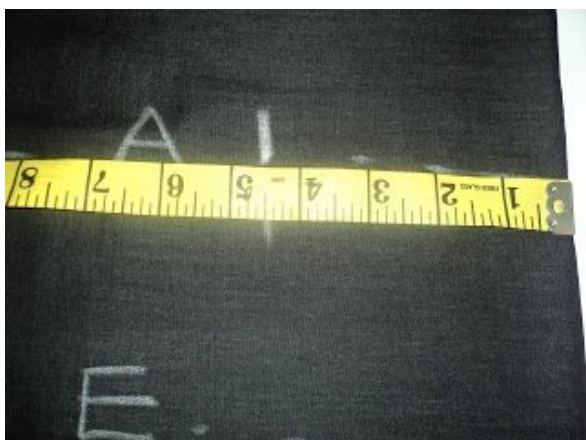
## Step 1 — Marking out measurements



The labels 'A', 'E' and 'B' stand for the Apex(nipple or highest point of the bust), Empire (that area under the bust, normally measured from the top of the shoulder to the underbust i.e. where your bra rests), and Bodice (your belly button, normally measured from your shoulder to belly button) The determined width would read as technical if I explain it, so I would just advice that you add about 12" to half your bust line measurement and if you are making a dress, add to your hip measurement. If you are bigger however, feel free to add incremental inches so you don't make errors and waste your fabric. Fold your fabric in two: measurements used here - bust(34), bodice(17 x 26), empire(27)

---

## Step 2 — Marking the apex



At the apex, measure out the 'gap' from one apex to the other. Here I used 8" as that is my perfect fit or rather 'gap' :-) so you are seeing 4.5" because the extra 0.5" makes for seam allowance.

---

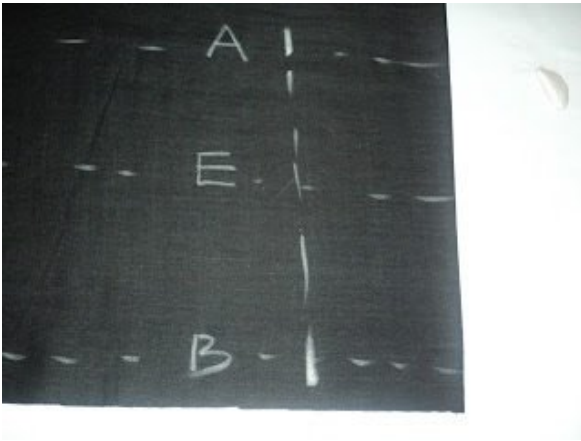
## Step 3 — Marking the bodice



At the bodice, measure out the same 'perfect fit gap', here I used 6". As you

---

## Step 4 — Connecting the dots: from bodice to apex



Connect the markings from bodice to apex

---

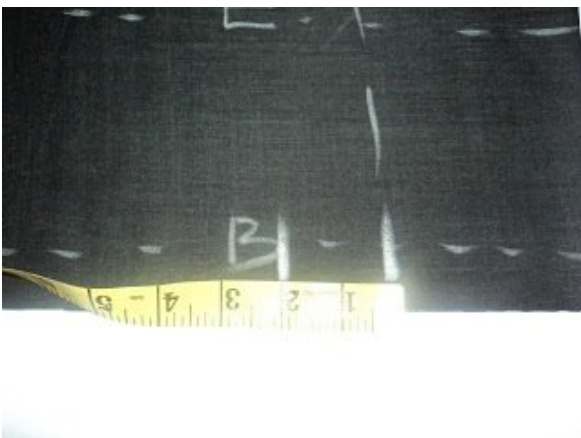
### Step 5 — The princess curve



now, I made different curves so you determine how high or low you would prefer your princess seams. Here we would make use of the lowest one (the curve with the arrows). Note that the lower the curve, the pointier the curve at the apex.

---

### Step 6 — The princess curve - a



Step 4 — Connecting the dots: from bodice to apex

make a 2" mark from the bodice gap you've created

---

## Step 7 — Creating your princess curve



connect the dots all the way to the apex, following whichever curve you want

---

**BurdaStyle**

How To Make A Princess Seam Without A Pattern