

01/2012 Jacket with front frills

By: burda style magazine

<http://www.burdastyle.com/projects/012012-jacket-with-front-frills>



Jacket with front frills burda style magazine patterns FAQ

Materials

Brushed mohair

Step 1 — Preparation



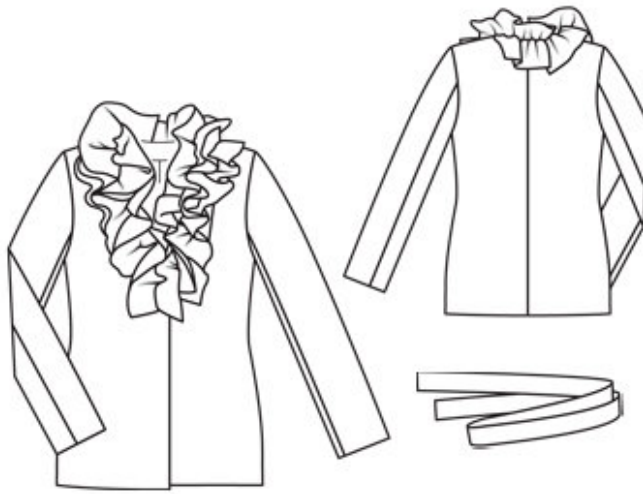
Paper cut for ANSI A (German DIN A4) prints:

This pattern is printed on 8.5 × 11 sheets of plain paper. Do not scale or center pages before printing. Wait until all sheets are printed out before beginning to tape them together. **Do not cut out pattern pieces yet**— Arrange the sheets on a large, hard, flat surface so that they fit together, matching up like numbers and letters (i.e. 6A to 6A). To tape pattern together, fold under the margin of one piece (6A) and tape right against the line of it's matching number/letter (6A).

burda style magazine pattern do not have seam allowance included.

Seam and hem allowances to be added: Seams and edges 1.5 cm (5/8 in).

Step 2 — Cutting out



1 front 2x

2 front facing 2x

3 back 2x

4 upper sleeve 2x

5 under sleeve 2x

6 back facing, on a fold 1x

a) tie belt, 145 — 150 — 155 — 160 — 165 cm (57 — 59 — 61 — 63 — 65 ins) long, 6 cm (2 1/2 ins) wide, finished width 3 cm (3 1/4 ins),

b) frill, 90 cm (36 ins) long, 12 cm (4 3/4 ins) wide,

c) frill 100 cm (40 ins) long, 15 cm (6 ins) wide,

d) 2 frills, cut on bias, 30 cm (12 ins) long, 10 cm (4 ins) wide.

Interfacing: See pattern layout. Also interface the hem allowances. Iron Vilene Bias Tape/ stay tape to wrong side of armhole edges.

Step 3 — Darts

Stitch front darts. Trim dart allowances to 1 cm (3/8 in) wide and press open, pressing points of darts flat.

Step 4 — Back and shoulders

Stitch centre back seam, side seams, and shoulder seams. Press seam allowances open.

Step 5 — Shoulder seams

Stitch shoulder seams of facing. Pin facing right sides together with jacket. Stitch along front and neck edges. Trim seam allowances, trimming corners diagonally. Turn facing to inside. Press faced edges.

Step 6 — Facings

Unfold facings at hem edge. Press hem allowance to inside and sew in place by hand. Turn facings to inside again and sew to hem allowance and to seams.

Step 7 — Sleeves

Stitch sleeve seams. Press sleeve hem allowance to inside and sew in place by hand.

Step 8 — Sleeve caps

Set in sleeves, easing sleeve caps.

Step 9 — Frills

Remove fabric threads from lengthwise edges of frills to fringe edges approx. 5 mm (3/16 in) wide. Gather short frills along centre to a length of approx. 17 cm (63/4 ins). Lay frills on front neck edges, from shoulder seams. Hand sew centre of each frill in place, approx. 3 cm (11/4 ins) from neck edge. Gather longer frills along centre to a length of approx. 47 — 49 — 50 — 51 — 52 cm (181/2 — 191/4 — 193/4 — 201/4 — 201/2 ins), leaving bottom end of narrower frill ungathered, approx. 5 cm (2 ins) long. Lay narrower frill on left half of neck edge and pin in place, twisting frill a few times. Frill ends approx. 2 cm (3/4 in) from centre back. Hand sew centre of frill in place, approx. 1 cm (3/8 in) from neck edge. Sew wider frill to right half of neck edge in same manner.

Step 10 — Belt

Fold tie belt lengthwise, right side facing in. Stitch edges together, leaving a section of seam open, for turning. Turn belt right side out. Sew opening closed.

BurdaStyle

01/2012 Jacket with front frills