

Cabezas Belt

By: burdastyle

<http://www.burdastyle.com/projects/cabezas-belt>



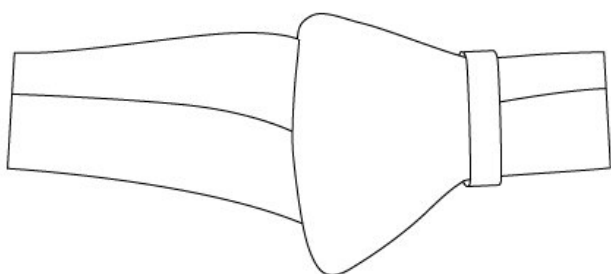
This is the belt sewing pattern designer Sean Cabezas created to compliment his high waist, tiered Sean Skirt. We made our version in a subtle, animal-printed suede, but you could also try upholstery fabric, leather or cotton canvas. If you're not crazy about the shape, this belt makes a good pattern block to create a unique

belt shape of your own. Go wild with multiple variations.

Materials

For sizes 34-44: 3/4 – 7/8 yards (0,60 – 0,70 m.) leather or medium – heavy weight material. Interfacing

Step 1 — PATTERN



Pattern pieces:

1 Belt I 1x

2 Belt II 1x

3 Front belt piece 1x

4 Loop 1x

5 Belt â– wrong side 1x

6 Front belt piece â– wrong side 1x

Material: Faux leather or leather

The patterns can be printed out at the copy shop. If you decide to print them at home, follow the instructions:

Paper cut for ANSI A (German DIN A4) prints:

The patterns are printed out on 10 sheets with a thin frame. Wait until all sheets are printed out. Arrange the sheets so that they fit together (see additional page with the overview of the prints). Fold the single sheets on the upper and right edge along the thin frame lines. Begin with the left lower sheet and then tape the frame lines together precisely.

Step 2 — ADJUST PATTERN SIZES



ADJUST PATTERN SIZES

Select your size according to the Burda-dimension table: dresses, blouses, jackets and coats according to the bust size, trousers and skirts according to the hip width. Change the pattern to fit your measurements if they deviate from the Burda-size chart. Cut out the pattern pieces 1 to 6 for the belt according to your size.

Refer to our *Adjust patterns for mixed sizes* technique.

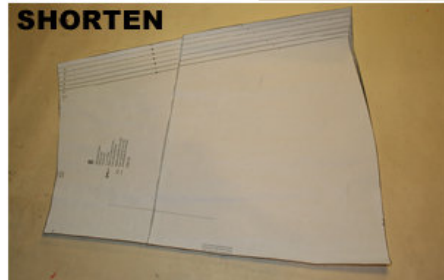
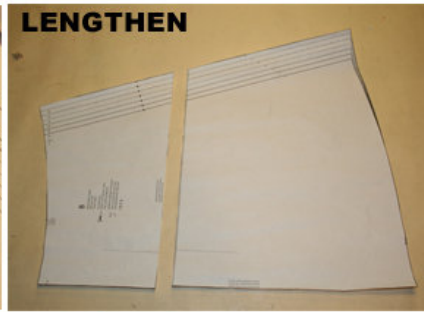
How to lengthen and shorten pattern pieces:

Cut the pattern pieces along the marked lines

To lengthen, slide the two halves of the pattern piece as far apart as necessary.

To shorten, overlap the two halves of the pattern piece as far as necessary. Blend the side edges.

Step 3 — CUTTING OUT | FOLD



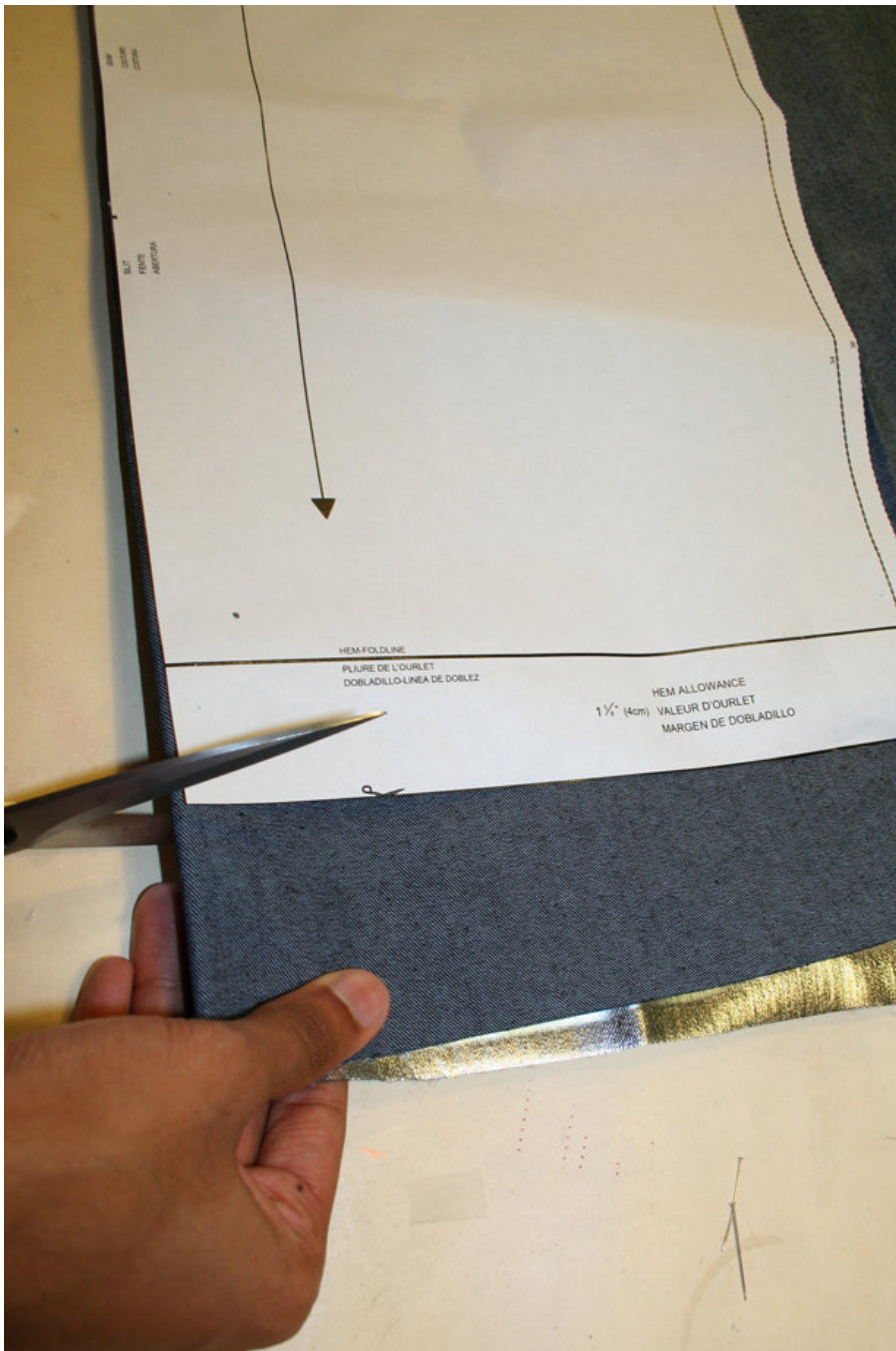
CUTTING OUT

FOLD () means: Cut on the fold, the fold being the center of the pattern piece, but never a cut edge or seam. The piece should be cut double, with the fold line forming the center line. Pattern pieces that are outlined with a broken line in the cutting diagrams are to be placed face down on the fabric. The cutting diagrams on the pattern sheet show how the pattern pieces should be placed on the fabric.

The cutting diagrams show the placement of the pattern on the fabric.

For a single layer of fabric, the wrong sides of the pattern pieces are pinned to the right side of the fabric.

Step 4 — SEAM ALLOWANCES | INTERFACING | SEWING WITH LEATHER



SEAM AND HEMLINE ALLOWANCES are included on an average:

$\frac{5}{8}$ " (1.5 cm) for all edges of pieces 5 and 6; $\frac{1}{2}$ " (1 cm) for all edges of piece 4. Using BURDA copying paper, transfer the lines and signs of the pattern onto the right side of the fabric. Instructions can be found in the packaging.

INTERFACING

Cut out the interfacing pieces and press onto the wrong side of the fabric.

Sewing

While sewing, the right sides of the fabric are facing.

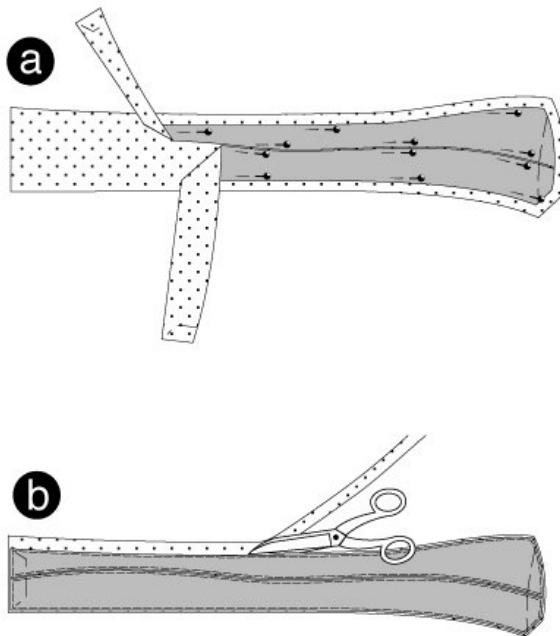
Transfer all lines of the pattern onto the right side of the fabric using chalk.

ADVICE FOR FAUX LEATHER:

Do not pin faux leather, the pin holes will stay visible. Use a Teflon coated machine foot or place a layer of silk paper between the faux leather and the foot to guarantee a smooth sewing process. Silk paper would be removed after stitching. Press faux leather on its wrong side using a cloth.

In all cases, test iron on a remnant piece.

Step 5 — BELT



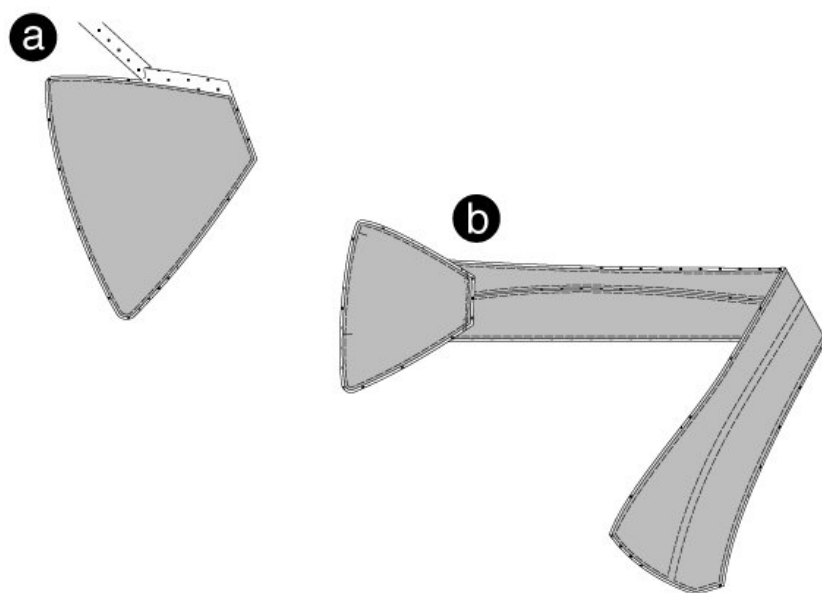
BELT

Belt pieces I and II

Position belt pieces I and II on the inner belt piece (piece 5), wrong sides facing (seam number 1). The edges of the inner belt piece overlap equally on all edges. The edges of pieces I and II meet. Topstitch along the edges of belt pieces I and II. (a)

Cut the overlapping inner belt allowance along all edges. (b)

Step 6 — FRONT BELT PIECE

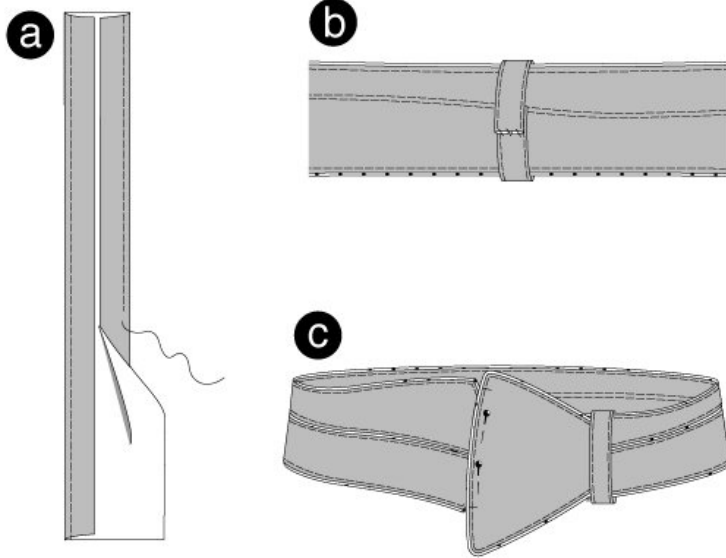


FRONT BELT PIECE

Position the front belt piece and the belt piece 6 together, wrong sides facing. pin. The edges of piece 6 overlap equally on all edges. Topstitch the front belt piece narrowly along the edges. Cut the overlapping allowance of piece 6. (a)

Position the front piece of the belt on the left end of the belt, the seam lines meet. Stitch (seam number 2). (b)

Step 7 — LOOPS | CLOSURE



LOOPS

Fold the edges lengthwise so that the edges meet the fold line. Topstitch edges. (a)

Wrap the loop around the belt. Adjust length to width of belt and stitch ends together. (b)

CLOSURE

Position the two belt ends together, the seam lines meet. Apply either hooks or eyes to each side of the belt. Close the belt. ©

BurdaStyle

Cabezas Belt