

# 6/2010 Jersey Dress

By: burda style magazine

<http://www.burdastyle.com/projects/62010-jersey-dress>

---

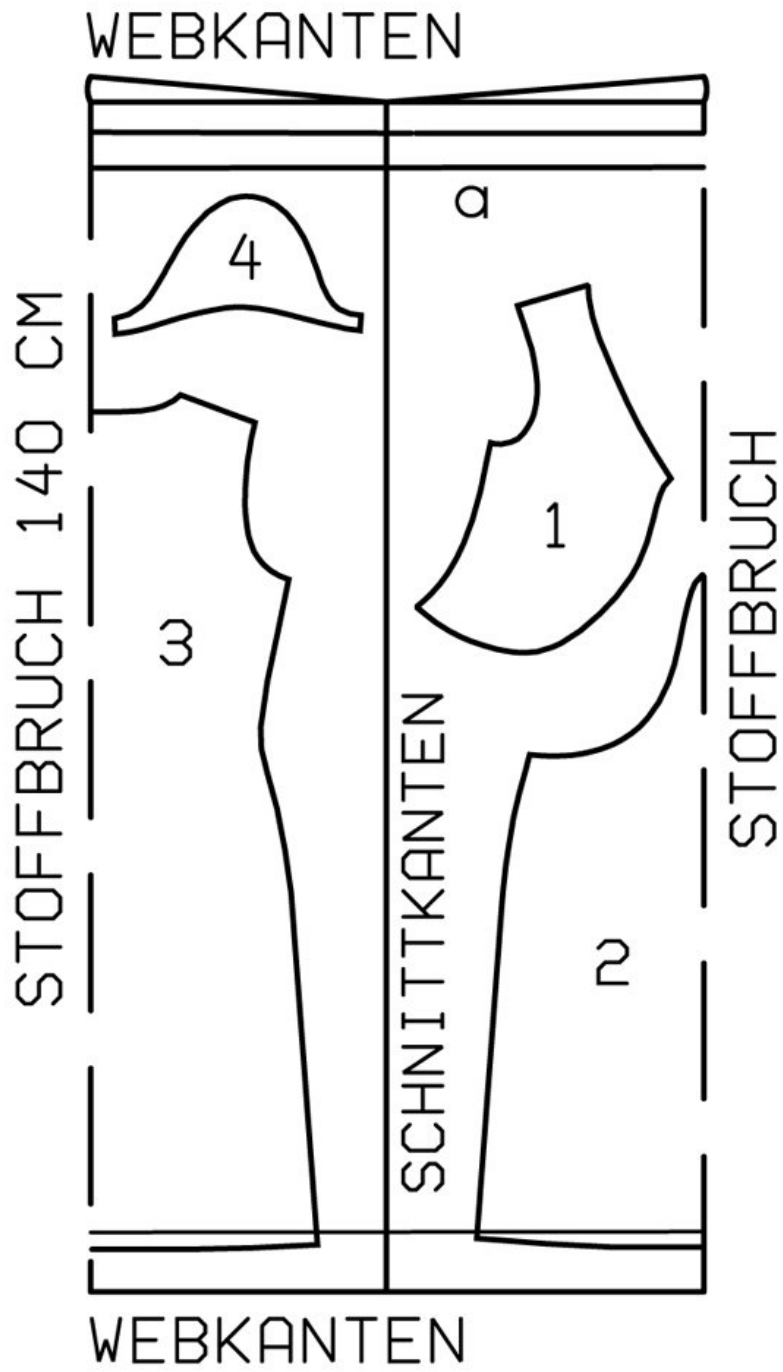
Jersey Body-Con Dress burda style magazine patterns FAQ

## Materials

Fine jersey with one border print

---

## Step 1 — Preparation



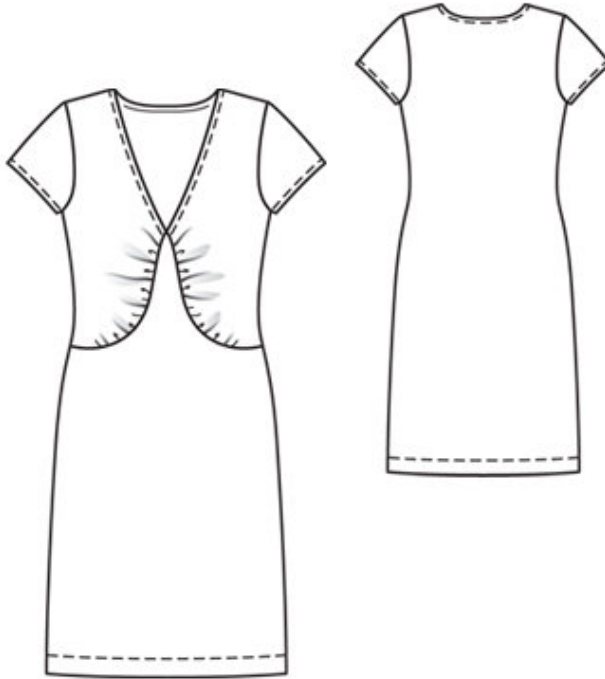
109 36-44

Trace the pattern pieces from the pattern sheet.  
 Seam and hem allowances:

Seams and edges 1.5 cm (5/8 in), hem 4 cm (1 5/8 ins), sleeve hems 1.5 cm (5/8 in).

---

## Step 2 — Cutting Out



1 upper front 2x

2 lower front, on a fold 1x

3 back, on a fold 1x

4 sleeve 2x

a) facing strip for neck edge, 73 — 75 — 76 — 78 — 80 cm (28 3/4 — 29 3/4 — 30 — 30 3/4 — 31 1/2 ins) long, 4 cm (1 5/8 ins) wide (incl. allowance).

Vilene Bias Tape: Iron onto shoulder seam edges of fronts and onto neck edges. Also iron Vilene Bias Tape onto section seam edges of lower front.

---

## Step 3 — Shoulder seams

Stitch shoulder seams. Trim seam allowances to 7 mm (1/4 in), neaten together and press onto back.

---

## Step 4 — Neck edge

Fold facing strip for neck edge lengthwise, right side facing out, and press. Pin doubled facing strip to neck edge so that fold edge of strip lies on garment piece, 1 cm (3/8 in) past seam line. Stitch along neck edge. Trim seam allowances. Turn facing strip to inside. Topstitch 7 mm (1/4 in) from neck edge.

---

## **Step 5 — Upper and Lower Fronts**

Fold allowance at top point of lower front down and press. Gather lower edges of upper front pieces. Stitch upper fronts to lower front — neck edges meet at centre front. Press seam allowances onto lower front.

---

## **Step 6 — Stitch side seams and sleeve seams.**

Stitch side seams and sleeve seams.

---

## **Step 7 — Sleeve Caps**

Set in sleeves, easing sleeve caps.

---

**BurdaStyle**

6/2010 Jersey Dress