

# 01/2011 Long sleeved top

By: burda style magazine

<http://www.burdastyle.com/projects/012011-long-sleeved-top>

---



Long sleeved top burda style magazine patterns FAQ

## Materials

Stretch jersey

---

## Step 1 — Preparation

Größen, Tailles, Sizes							2		3		4	
1	N		L		K		Oberweite Tour de poitrine Bust		Tailleweite Tour des taille Waist		Hüftweite Tour des hanches Hip	
	5'6" 168 cm		5'9" 176 cm		5'3" 160 cm		ins	cm	ins	cm	ins	cm
	US	Eur.	US	Eur.	US	Eur.						
	6	32	6	64	6	16	30	76	23	58	32 ½	82
	8	34	8	68	8	17	31 ½	80	24 ½	62	34	86
	10	36	10	72	10	18	33	84	26	66	35 ½	90
	12	38	12	76	12	19	34 ¾	88	27 ¾	70	37	94
	14	40	14	80	14	20	36 ¾	92	29 ¾	74	38 ¾	98
	16	42	16	84	16	21	37 ¾	96	30 ¾	78	40 ¾	102
	18	44	18	88	18	22	39 ½	100	32 ½	82	41 ¾	106
	20	46	20	92	20	23	41	104	34	86	43 ½	110
	22	48	22	96	22	24	43 ½	110	36 ¾	92	45 ¾	116
	24	50	24	100	24	25	45 ¾	116	38 ¾	98	48	122
	26	52	26	104	26	26	48	122	41	104	50 ½	128
	28	54	28	108	28	27	50 ½	128	43 ½	110	52 ¾	134
	30	56	30	112	30	28	52 ¾	134	45 ¾	116	55 ¾	140
	32	58	32	116	32	29	55 ¾	140	48	122	57 ½	146
	34	60	34	120	34	30	57 ½	146	50 ½	128	60	152

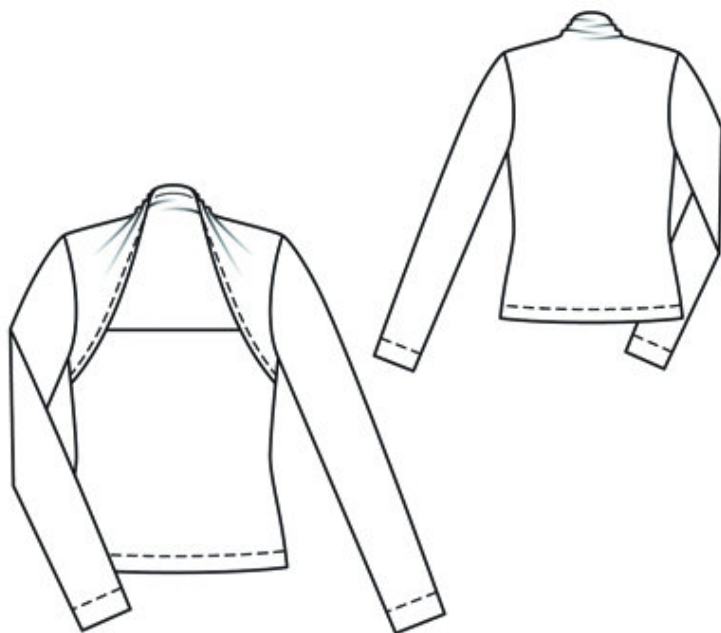
Trace the pattern pieces from the pattern sheet.

Seam and hem allowances:

Seams and edges 1.5 cm (5/8 in), hem 4 cm (15/8 ins), sleeve hems 5 cm (2 ins) (flare sleeve hem allowances.)

---

## Step 2 — Cutting out



21front, on a fold 1x

22back with front yoke, on a fold 1x

23sleeve 2x

---

### Step 3 — Self facing

Fold self-facing on front to inside on fold line and press. Baste to side edges. Lay front right sides together with back. Fold back piece down on marked shoulder lines. Stitch to front, from each side seam edge (seam number 1) to marking. Press seam allowances up then press allowance on neck edge to inside. Work from right side of garment to stitch allowance in place, 1 cm (3/8 in) from edge, using the twin machine needle.

---

### Step 4 — Hem allowance

Stitch side seams and sleeve seams. Lay hem allowances to inside. Stitch from right side with the twin needle 3 cm (1 1/4 ins) from lower edge of garment and 4 cm (1 5/8 ins) from lower edges of sleeves.

---

### Step 5 — Sleeves

Set in sleeves.

---

**BurdaStyle**

01/2011 Long sleeved top