

05/2010 Empire Waisted Dress

By: burda style magazine

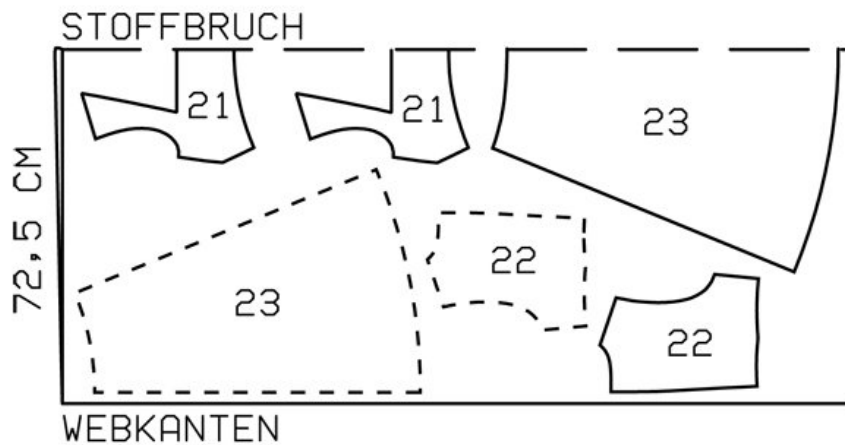
<http://www.burdastyle.com/projects/052010-empire-waisted-dress>

Empire Waisted Dress burda style magazine patterns FAQ

Materials

batiste

Step 1 — Preparation



106 34-42

Trace the pattern pieces from the pattern sheet. Note different lines for upper front and back of skirt panel.
Seam and hem allowances: Seams and edges 1.5 cm (5/8 in)

Step 2 — Neck edge, armholes, and shoulder -seams



Pin inside front and inside back pieces right sides together with respective outer pieces. Stitch along neck and armhole edges, -beginning and ending 2 cm (3/4 in) below each shoulder seam line. Trim seam allowances. Clip curves close to stitching. Turn front (not backs) right side out. Slip front shoulder edges between the as yet unturned back shoulder edges right fabric sides of outer -pieces and of inner pieces lie facing. Stitch shoulder seams on outer and inner pieces. Pull pieces lying inside — shoulder tunnels— up and out a bit. Press seam allowances of shoulder -seams open. This will be easier if you slip the handle of a wooden spoon under the seams. Then stitch remaining open edges of neck and armhole edges closed. Pull front down out of shoulder edges of back pieces and the inside backs will turn themselves to the inside. Press neck and armhole edges.

Step 3 — Side Seams

At armholes, lay inside pieces up again. Stitch side seams on outer and inner pieces as continuous seams. Lay inner -pieces down again. Baste lower edges together.

Step 4 — Skirt panels

Stitch side seams on skirt panels. Stitch skirt to bodice. Press seam allowances up.

Step 5 — Zip

Sew invisible zip to back opening edges. Stitch centre back seam from lower edge to zip. Turn in top ends of zip tape and sew in place.

Step 6 — Lining

Stitch centre back seam of skirt lining, leaving opening for zip slightly longer than on outer fabric and leaving an opening, about 2 cm (3/4 in) long, at bottom to insert elastic. Stitch side seams.

Step 7 — Lining and zip

Stitch lining right sides together with lower edge of skirt. Lay lining down and press. Stitch as marked to form elastic casing. Place lining inside skirt with wrong sides facing and sew to seam allowances of skirt joining seam, stitching as far as possible at zip. Sew lining to zip tapes.

Step 8 — Hem

Pull elastic into hem casing. Sew ends of elastic together for a finished circumference of 92 — 96 — 100 — 104 — 108 cm (36 1/4 — 37 3/4 — 39 1/2 — 41 — 42 1/2 ins). needle.

BurdaStyle

05/2010 Empire Waisted Dress