

# 06/2010 Three-quarter sleeve dress

By: burda style magazine

<http://www.burdastyle.com/projects/062010-three-quarter-sleeve-dress>

---

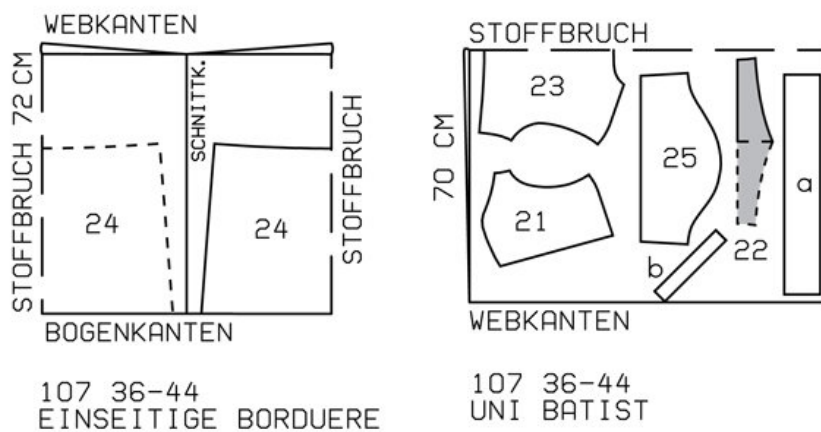
Three-quarter sleeve dress burda style magazine patterns FAQ

## Materials

eyelet/broderie anglaise with one scalloped edge

---

## Step 1 — Preparation



Trace the pattern pieces from the pattern sheet.

Seam and hem allowances:

Seams and edges 1.5 cm (5/8 in), sleeve hems 1.5 cm (5/8 in).

---

## Step 2 — Cutting out



Plain fabric:

21 front 2x

22 front waistband, on a fold 2x

23 back, on a fold 1x

25 sleeve 2x

a) 2 tie bands, 60 cm (23 3/4 ins) long, 10 cm (4 ins) wide, finished width 5 cm (2 ins),

b) bias strip for back neck edge, 22 — 23 — 23 — 24 — 24 cm (83/4 — 91/8 — 91/8 — 91/2 — 91/2 ins) long, 4 cm (15/8 ins) wide (incl. allowance).

Broderie anglaise:

24 skirt panel, on a fold 2x

Place the paper pattern piece with the lower edge on the scalloped edge of the fabric.

Interfacing: See pattern layout. Interface outer front waistband piece.

### Step 3 — Bust Darts

Stitch bust darts and press toward centre.

### Step 4 — Insert lace trim

Press allowance on neck edge of front pieces and on lower edge of sleeves to wrong side of fabric. Pin 2 cm (3/4 in) wide lace trim to front pieces, between lines marked for trim. Now first stitch lengthwise edges of trim in place a straight stitch setting. Cut fabric which lies beneath trim along the centre, between the seams, and press away from trim. Work from right side of fabric to stitch along edges of trim with closely spaced

zigzag stitching. Trim edges of fabric on inside, close to zigzag stitching. Stitch trim onto sleeves as marked, one 2 cm (3/4 in) wide trim and one 1.2 cm (1/2 in) wide trim.

---

## **Step 5 — Shoulder Seams**

Stitch shoulder seams — allowance of back extends at neck edge. Press shoulder seam allowances onto back

---

## **Step 6 — Bias Strip**

Fold bias strip lengthwise and press. Pin doubled bias strip to back neck edge so that fold edge of strip lies on garment piece, 1 cm (3/8 in) past seam line. Stitch along back neck edge. Trim seam allowances. Lay bias strip up and turn ends in. Turn bias strip to inside. Topstitch 5mm (3/16 in) from neck edge.

---

## **Step 7 — Waistband**

Baste fronts right sides together with upper edge of outer front waistband piece, neck edges of front pieces meet at centre front. Lay front waistband pieces right sides together. Stitch along upper edge of waistband. Trim seam allowances. Lay waistband pieces wrong sides together and lay fronts up. Baste side and lower edges of waistband together.

---

## **Step 8 — Sleeves**

Stitch sleeves to edges of armholes. Trim seam allowances, neaten together, and press onto sleeves.

---

## **Step 9 — Tie bands**

Fold tie bands lengthwise, right side facing in. Stitch along long edge and across one end of each. Trim seam allowances. Turn tie bands right side out and press. Baste tie bands right sides together with side seam edges of front waistband piece.

---

## **Step 10 — Dress bodice**

Stitch right side seam on dress bodice and sleeve seam as continuous seam.

---

## **Step 11 — Skirt**

Stitch right side seam on skirt. Gather upper edge of skirt to match edge of dress bodice. Stitch skirt to dress bodice. Press seam allowances up.

---

## **Step 12 — Invisible Zip**

Sew invisible zip to left opening edges. Leave top ends of zip tapes unattached. Teeth of zip begin at slit mark. Stitch left side seam from lower edge to zip. Stitch left sleeve seam and side seam to zip as continuous seam. Sew ends of seam allowances in place by hand.

---

06/2010 Three-quarter sleeve dress