

5/2011 Tunic Top

By: burda style magazine

<http://www.burdastyle.com/projects/52011-tunic-top>



Tunic Top burda style magazine patterns FAQ

Materials

Satin

Step 1 — Preparation

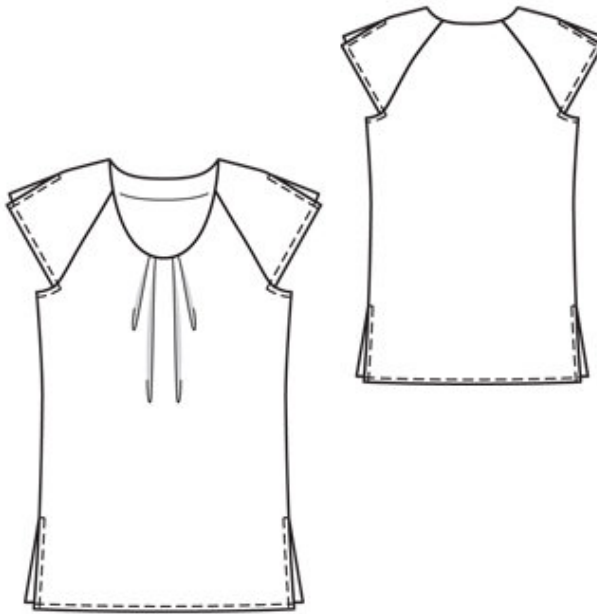
Trace the pattern pieces from the pattern sheet.

The pleat arrows on piece 1 are mark-ed for size 36. For the other sizes, remark the pleat arrows accordingly.

Seam and hem allowances:

Seams and edges 1.5 cm (5/8 in), slit edges 2 cm (3/4 in), hem and sleeve hems 2 cm (3/4 in).

Step 2 — Cutting Out



1 front, on a fold 1x

2 back, on a fold 1x

3 sleeve front 2x

4 sleeve back 2x

5 front neck facing, on a fold 1x

6 back neck facing, on a fold 1x

a) 2 bias strips for armholes, 13 cm (5 1/4 ins) long, 4 cm (1 5/8 ins) wide -(incl. allowances).

Interfacing: Iron to facing pieces.

Step 3 — At front neck edge, lay pleats in direction of arrows and baste

At front neck edge, lay pleats in direction of arrows and baste.

Step 4 — Stitch side seams, leaving slits open

Stitch side seams, leaving slits open.

Step 5 — Stitch top sleeve seams to slit mark

Stitch top sleeve seams to slit mark. Press sleeve hem allowances to inside, turn in, and stitch 1 cm (3/8 in) from lower edge. Turn in allowances at slits and stitch in place.

Step 6 — Stitch sleeves to front and back

Stitch sleeves to front and back (seam numbers 3 and 4). Trim allowances of sleeve joining seams to 7 mm (1/4 in) wide, neaten together, and press onto front and back.

Step 7 — Armholes

Fold bias strips for armhole edges in half lengthwise and press, right side facing out. Pin folded bias strips to armhole edges, below sleeves, so that fold edge of each strip lies on garment piece, 1 cm (3/8 in) past seam line, and ends of strip lie over lower edge of sleeve. Stitch along armhole edges. Trim seam allowances. Turn bias strips to inside. Topstitch 7 mm (1/4 in) from each armhole edge, below sleeve, at ends of this stitching, stitching at right angles, to lower edge of sleeve.

Step 8 — Neck edge:

Stitch shoulder seams of neck facing. Stitch neck facing right sides together with neck edge. Trim seam allowances. Lay facing up and stitch to seam allowances, close to seam. Turn facing to inside and press neck edge. Sew inside edge of facing to seams.

Step 9 — Hem

Press hem allowance and allowances at edges of slits to inside, turn in, and stitch 1 cm (3/8 in) from hem and slit edges.

BurdaStyle

5/2011 Tunic Top