

# Eva

By: burdastyle

<http://www.burdastyle.com/projects/eva>

---



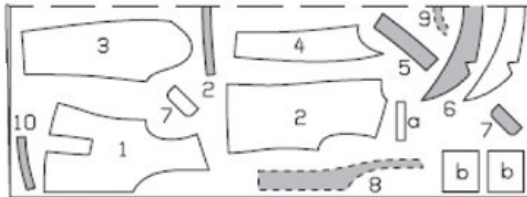
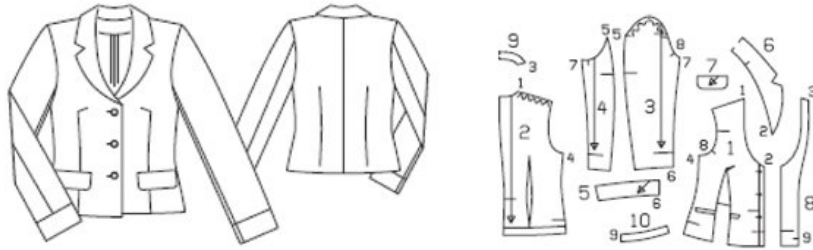
A versatile jacket for the ones that are looking into looking SHARP this fall. In our houndstooth version we shortened the whole thing, which is a great trick to make yourself appear taller. The two little pockets as well as the cuffs can be cut on bias. That creates an interesting look in geometric patterns and stripes.

## Materials

houndstooth, three buttons, some interfacing, some horsehair to make the collar fit well

---

## Step 1



- 1 Front piece 2x
- 2 Back piece 2x
- Back hem piping at the fabric fold line 1x
- 3 Upper sleeve 2x
- 4 Lower sleeve 2x
- 5 Sleeve placket 2x
- 6 Collar at the fabric fold line 2x
- 7 Flap 4x
- 8 Front facing 2x
- 9 Back facing at fabric fold line 2x
- 10 Front hem piping 2x.

Fabric: Light jacket fabrics, with or without spandex content like Seersucker, plaid, lateral elastic  
 56 inches (140 cm) width  
 Size 6: 76 inches (190 cm), size 8: 78 inches (195 cm)  
 Size 10: 80 inches (200 cm), size 12: 82 inches (205 cm)  
 Size 14: 84 inches (210 cm) in length

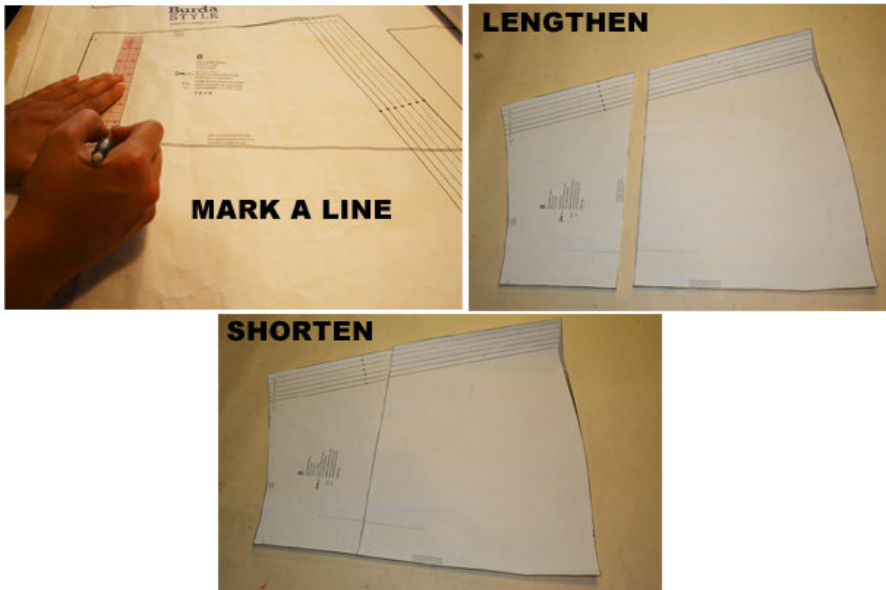
Also: Fusible bias tape, 3 buttons, shoulder pads

## Step 2



The patterns can be printed out at the copy shop. If you decide to print them at home, follow the instructions: Paper cut for ANSI A (German DIN A4) prints: The patterns are printed out on 28 sheets with a thin frame. Wait, until all sheets are printed out. Arrange the sheets so that they fit together (see extra page with the overview of the prints). Cut off the single sheets on the upper and right edge along the thin frame lines. Begin with the left lower sheet and then glue the parts in the frame lines together precisely.

### Step 3



#### ADJUST PATTERN SIZES

Select your size according to the Burda-dimension table: Dresses, blouses, jackets and coats according to the bust size, trousers and skirts according to the hip width. Change the patterns according to size (inches or cm) if necessary, to fit your measurements if they deviate from the Burda-dimension table. (a)

Cut out the pattern according to your size..

Refer to our "Adjust patterns for mixed sizes" technique

The button holes in part 1 are marked according to size 6. For further sizes mark the top bottom hole in the same space length to the neckline like size 6. The position of the lowest button hole will be the same for all sizes. Distribute the other button hole in between these 2 equally. The pocket lines in part 1 are only for size 6 completely marked on the pattern. For the other sizes (8 – 14) please add the allowance. Extend the flap line to the front; add cut lines and piping lines. Length of the flap line for Size 12: 5 inches (12.5 cm), size 14: 5 inches (13 cm), Size 16: 5 ½ inches (13.5 cm), size 18: 5 ½ inches (14 cm).

#### LENGTHENING OR SHORTENING THE PATTERN PIECES

Our pattern is calculated for a height of 5’6” (168 cm). If you are taller or shorter, you can adjust the pattern pieces along the lines marked “lengthen or shorten here”. This way the proper fit is maintained. Always adjust all pattern pieces along the same line to the same degree (b).

How to lengthen and shorten pattern pieces:

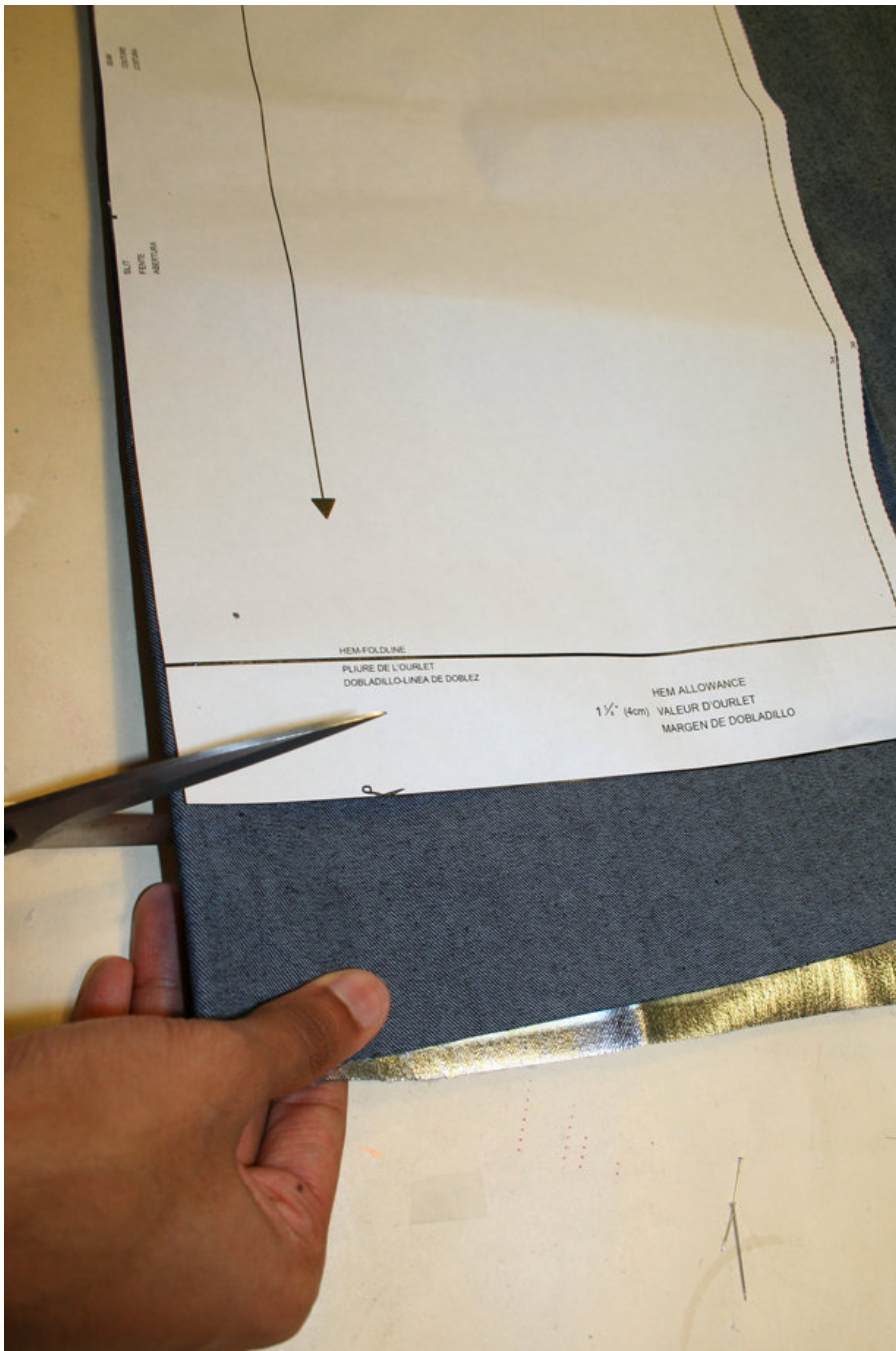
Cut the pattern pieces along the marked lines

To lengthen, slide the two halves of the pattern piece as far apart as necessary.

To shorten, overlap the two halves of the pattern piece as far as necessary. Blend the side edges ©.

---

## Step 4



## CUTTING OUT

**FOLD** ( ) means: Cut on the fold, the fold being the center of the pattern piece, but never a cut edge or seam. The piece should be cut double, with the fold line forming the center line. Pattern pieces that are outlined with a broken line in the cutting diagrams are to be placed face down on the fabric. The cutting diagrams on the pattern sheet show how the pattern pieces should be placed on the fabric (a).

The cutting diagrams show the placement of the pattern on the fabric.

For a single layer of fabric, the pattern pieces are pinned to the right side. For double layers of fabric, the right sides are facing and the pattern pieces are pinned to the wrong side. The pattern pieces that are shown extending over the fold of the fabric in the cutting diagram should be cut last from a single layer of fabric (b).

Cut pattern pieces 1 to 10 from a double layer of fabric.

a) 2 piping straps for

Size 6: 6 inches (15 cm), size 8: 6 inches (15.5 cm), Size 10: 7 inches (16 cm), size 12: 7 inches (16.5 cm),  
Size 14: 8 inches (17 cm) in length, 1 inch (3 cm) width (including allowance)

b) 4 pocket pouches for

Size 6: 6 inches (15 cm), size 8: 6 inches (15.5 cm), Size 10: 7 inches (16 cm), size 12: 7 inches (16.5 cm),  
Size 14: 8 inches (17 cm) in length (including allowance)

---

## Step 5

SEAM AND HEMLINE ALLOWANCES are included on an average:

5/8" (1.5 cm) for all edges and stitches. Using BURDA copying paper, transfer the lines and signs of the pattern onto the wrong side of the fabric. Instructions can be found in the packaging.

Sewing

While sewing, the right sides of the fabric are facing.

Transfer all lines of the pattern onto the right side of the fabric using basting stitches.

Interfacing

Interfacing is marked gray on the cutting diagram. Press the interfacing onto the underside of the collar. For the outer edges cut the interfacing pieces approximately 1/2 inch (17 mm) smaller than the paper pattern pieces. Cut the interfacing pieces for the sleeve plackets at the upper edge 1/2 inch (17 mm) smaller than the paper pattern piece. Additionally cut 1 1/2 inch (4 cm) wide interfacing straps that will be pressed onto the pocket mark lines.

---

## Step 6

The bust dart

At the front pieces, the darts in the center between the marked lines have to be cut in up to 1 inch (2 cm) before the pointy end. Pin the upper cross edges of the darts on top of each other, the right sides facing, stitch from the corner to the pointy end. Notch the allowances at the corner. Pin the allowances from the edge downwards and stitch. Press the allowances of the long seams towards to center; press the allowances of the short seams downward. Stitch the dart allowances using a zigzag stitch, 4 mm wide.

Stitch the darts at the back piece, press towards the center. Stitch center seam. Press the allowances apart. Stitch along the center seam using a 4 mm wide zigzag stitch. Stitch the side and shoulder seams. Press allowances apart.

Position a flap piece with interfacing and one without on top of each other left sides facing. Stitch the side and the lower edges on top of each other; 1/2 inch wide (2 mm smaller than allowances). Trim allowances. Stitch the allowances 2 mm next to the edges; using a zigzag stitch.

---

## Step 7

Flap pockets:

Stitch the Flaps and the piping straps onto the front pieces along the appendage line. Cut in the fabric between the seams, cut bias wise at the seam ends. Do not cut in the pocket pieces. Press the flaps onto the opening slit of the pocket. Position the piping straps inside all around the cutting edge and pin on the right outer side on the seam groove. Stitch the pocket pouches onto the allowances of the piping edge seams and

flap edge seams. Fold the little triangles at the cut ends inwards, stitch from seam end to seam end on pocket pouch and piping. Trim both pocket pouches to the same size and position on top of each other, stitch.

---

## Step 8

Baste the collar pieces on top of each other, the left sides facing. Stitch approximately  $\hat{A}$ ½ inch (17 mm) next to the outer collar edges. Trim allowances. Stitch 2 mm along the outer edges using a zigzag stitch. Baste collar edges combined onto the neckline, the allowances of the front edges are overlapping.

Stitch shoulder seams onto the facing. Stitch facing onto the neckline, the right sides facing, thereby the collar will be enclosed. At the neckline fold the facing upwards and stitch narrowly along the seam onto the allowances. Stitch the side seams along the hem facing. Pin the hem facing first, then the front facings under the jacket edges, the left sides facing. Stitch the front and bottom jacket edges approximately  $\hat{A}$ ½ inch (17 mm) wide, trim allowances, stitch edges using a zigzag stitch. Stitch the front facings onto the hem facing.

Stitch back sleeve seams. Stitch sleeve plackets from the inner side to the lower sleeve edges, the right side facing the other left. Fold plackets outward. Trim the allowances of the upper edge of the plackets. Stitch the upper placket edges using a zigzag stitch. Stitch front sleeve seams. Stitch the lower edges of the allowances by hand.

Apply the sleeves; while bunching the rounding of the sleeve. Insert the shoulder pads.

Apply the button holes onto the right front piece

---

**BurdaStyle**

Eva